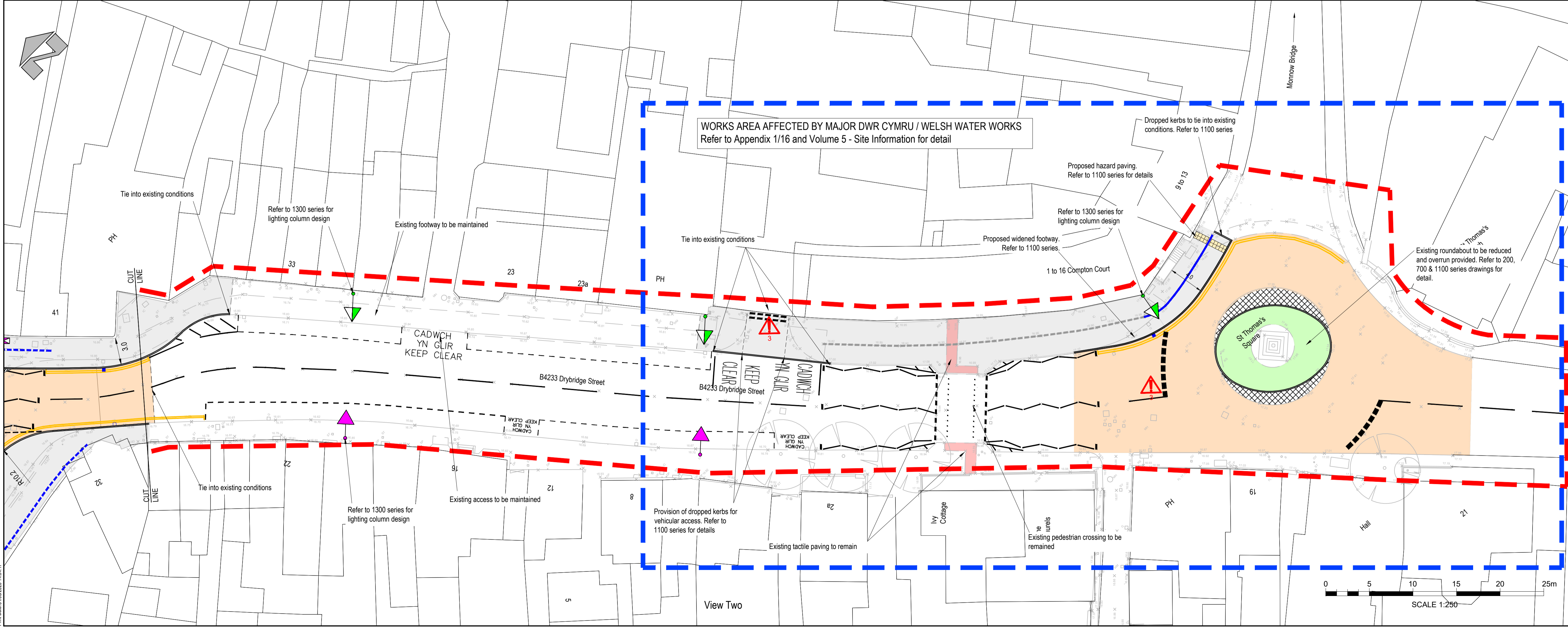


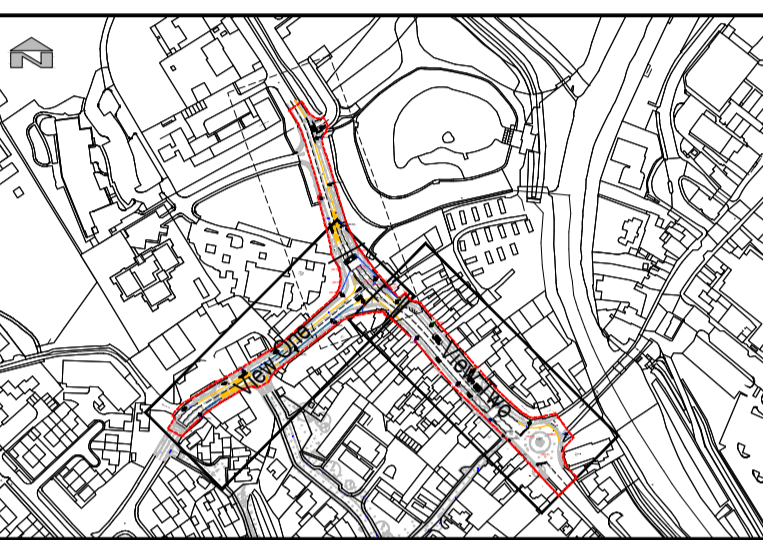
View One



View Two

- KEY**
- Site Boundary
 - Proposed gully. Refer to 500 series drawings.
 - Proposed drainage channel. Refer to 500 series drawings.
 - Existing drainage slot channel.
 - Proposed plane and inlay existing carriageway. Refer to 700 series drawings.
 - Proposed full carriageway construction. Refer to 700 series drawings.
 - Proposed footway. Refer to 1100 series drawings.
 - Removal of on street parking and application of double yellow lines

- Notes**
1. All dimensions are in millimetres unless otherwise stated.
 2. For cross sections locations, cross sections, typical sections, long sections and setting out information refer to 100 series drawings.
 3. For site clearance refer to 200 series drawings.
 4. For drainage refer to 500 series drawings.
 5. For earthworks refer to 600 series drawings.
 6. For pavements refer to 700 series drawings.
 7. For footway and paving details refer to 1100 series drawings.
 8. For traffic signs and road markings refer to 1200 series drawings.
 9. For street lighting and electrical works refer to 1300 & 1400 series drawings.
 10. For setting out details refer to the design model in Volume 5 - Site Information in the Specification.



SAFETY, HEALTH AND ENVIRONMENTAL INFORMATION

IN ADDITION TO THE HAZARDOUS RISKS NORMALLY ASSOCIATED WITH THE TYPES OF WORK DETAILED ON THIS DRAWING, NOTE THE FOLLOWING

- ▲ 1. Works in busy carriageway.
- ▲ 2. Generally high footfall of pedestrians including schoolchildren.
- ▲ 3. 11kv underground cable.
- ▲ 4. Location of culverts, symbol denotes start and end.

IT IS ASSUMED THAT ALL WORKS WILL BE CARRIED OUT BY A COMPETENT CONTRACTOR WORKING, WHERE APPROPRIATE, TO AN APPROVED METHOD STATEMENT.

© Hawfrant y Goron a hawliau cronfa ddata 2019 Arolwg Ordrons 100023415
© Crown copyright and database rights 2019 Ordnance Survey 100023415

C01	SL	LM	SM	First Issue	31/08/2023
Rev	Drawn	Checked	App'd	Description	Date
Purpose of Issue					
D2 - Issued For Tender					
Classification					
Confidential					
Client					
Monmouthshire County Council					
Project					
Williams Field Lane Active Travel Link					
Drawing					
General Arrangement Sheet 1 of 2					
Scale @ A1	Drawn	Checked	Approved		
1:250	SL	LM	SM		
Project No.				Date	
CS/101496				23-SEPT-2022	
Drawing Identifier				BS1192 Compliant	
Project - Originator - Zone - Level - File Type - Role - Number				revision	
WFAT-WSP-01-02-DR-C-0101				C01	

wsp

Quest House, St Mellons Business Park, Fortran Road,
St Mellons, Cardiff, CF3 0EY, UK
wsp.com