



## Overmonnow Specialist Resource Base

Overmonnow SRB is part of Overmonnow Primary School. The SRB is known as 'Herons Class'. There are 3 smaller class groups within the SRB. Overmonnow SRB also has a satellite class at Deri View Primary School in Abergavenny. The staff team are very well established and skilled in supporting pupils who have complex additional learning needs including Autistic Spectrum Disorder (ASD), Severe Learning Difficulties (SLD) and Profound and Multiple Learning Difficulties (PMLD). The SRB provides an environment appropriate to the needs of the pupils who require a different approach to their learning and the use of specialist approaches. The pupils in the SNRB are placed by the Local Authority. The SRB is located on a green, leafy site surrounded by trees. It has a designated, secure play area.



The school was last inspected in November 2018. The outcome of the inspection was that the performance of the school was 'good' across all aspects inspected. The inspection report indicated that:

- *The provision for pupils with additional learning needs, both in mainstream classes and in the special needs resource base, is strong.*
- *Most pupils in the special needs resource base make good progress, often from very low starting points.*
- *In the special needs resource base, pupils have appropriate independent learning skills. Pupils with additional speech and language needs use pictures successfully to communicate so that adults can respond and ensure their wellbeing.*
- *Staff in the special needs resource base use areas such as the sensory light room effectively to support the learning and wellbeing of pupils with specific needs.*
- *Generally, there is a good degree of challenge for pupils of all abilities, including individualised learning for pupils in the special needs resource base.*
- *There are beneficial partnerships with the local and wider community.*

## What we offer

- Personal care suite for pupils with intimate care needs

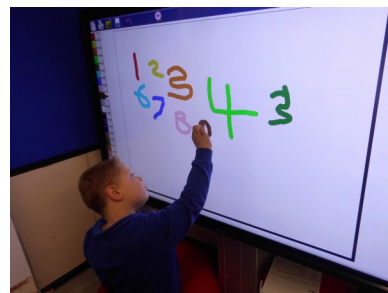


# What we offer

- Regular access to a specialist teacher and specialist teaching assistants
- Provision of a progressive curriculum, with small step teaching, where pupils acquire a breath of skills essential for their development
- Learning delivered through meaningful contexts and adapted to meet individual pupils' needs and interests
- Flexible access to individual, small group and whole class teaching as appropriate, including integration into mainstream classes
- A structured teaching approach, based upon principles of TEACCH, to provide a calm, orderly and predictable learning environment and a high level of routine to increase familiarity



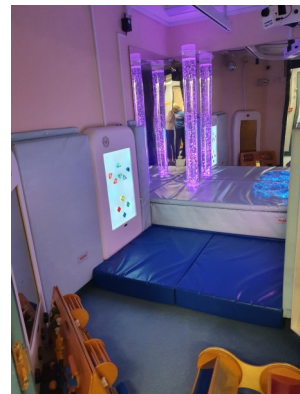
- A total communication approach including use of objects, photos or symbols of reference, signing and ICT



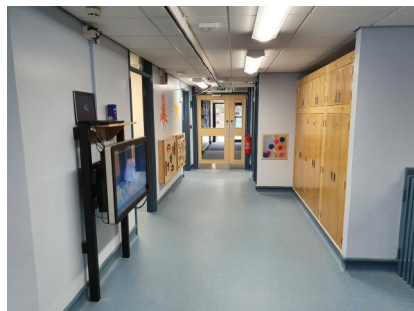
- Following guidance from the Speech and Language Therapy Service, access to low / high tech Augmentative and Alternative Communication (AAC) systems as appropriate, such as use of Picture Exchange Communication System (PECS) or 'Proloquo2go'
- Multi-agency working – regular liaison and meetings with professionals in health and social care.
- Staff trained in health and safety aspects such as Team Teach, Epilepsy and manual handling

# What we offer

- Language and communication targets integrated into daily planning
- Sessions to develop natural and spontaneous communication through the use of visually based and highly motivating activities
- Attention Autism
- Access to 'Tacpac' sessions; a sensory communication resource using touch and music to help communication and social skills
- An emphasis upon stress and anxiety management for pupils
- Access to Rebound Therapy and Flexi Bounce Therapy by trained staff, to provide therapeutic exercise, as appropriate
- Pupils' individual sensory profiles planned for, to make adaptations to the sensory environment where possible and provide opportunities for a 'sensory diet', for example, through use of our sensory spaces



- Weekly visits from a music therapist
- Weekly swimming sessions at Monmouth Leisure Centre and weekly horse riding sessions through 'Riding for the Disabled' in Hereford
- Links with the local community
- Access to a safe and secure environment at unstructured times
- Hoist system for pupils with mobility needs





# Meeting the Needs

'Meeting the Needs' is a registered charity and was formed in 1999 to benefit the pupils in Overmonnow Specialist Resource Base. Having charitable status allows us to access areas of funding only available to groups that are recognised by the Charities Commission. Over the years we have received tremendous support from many groups, some nationally and others within our local community.

Charity No. 1074754

## Contact

Overmonnow Special Needs Resource Base

Overmonnow Primary School

Rockfield Road

Monmouth

Monmouthshire

NP25 5BA

Tel. 01600 713458

[overmonnowprimary@monmouthshire.gov.uk](mailto:overmonnowprimary@monmouthshire.gov.uk)