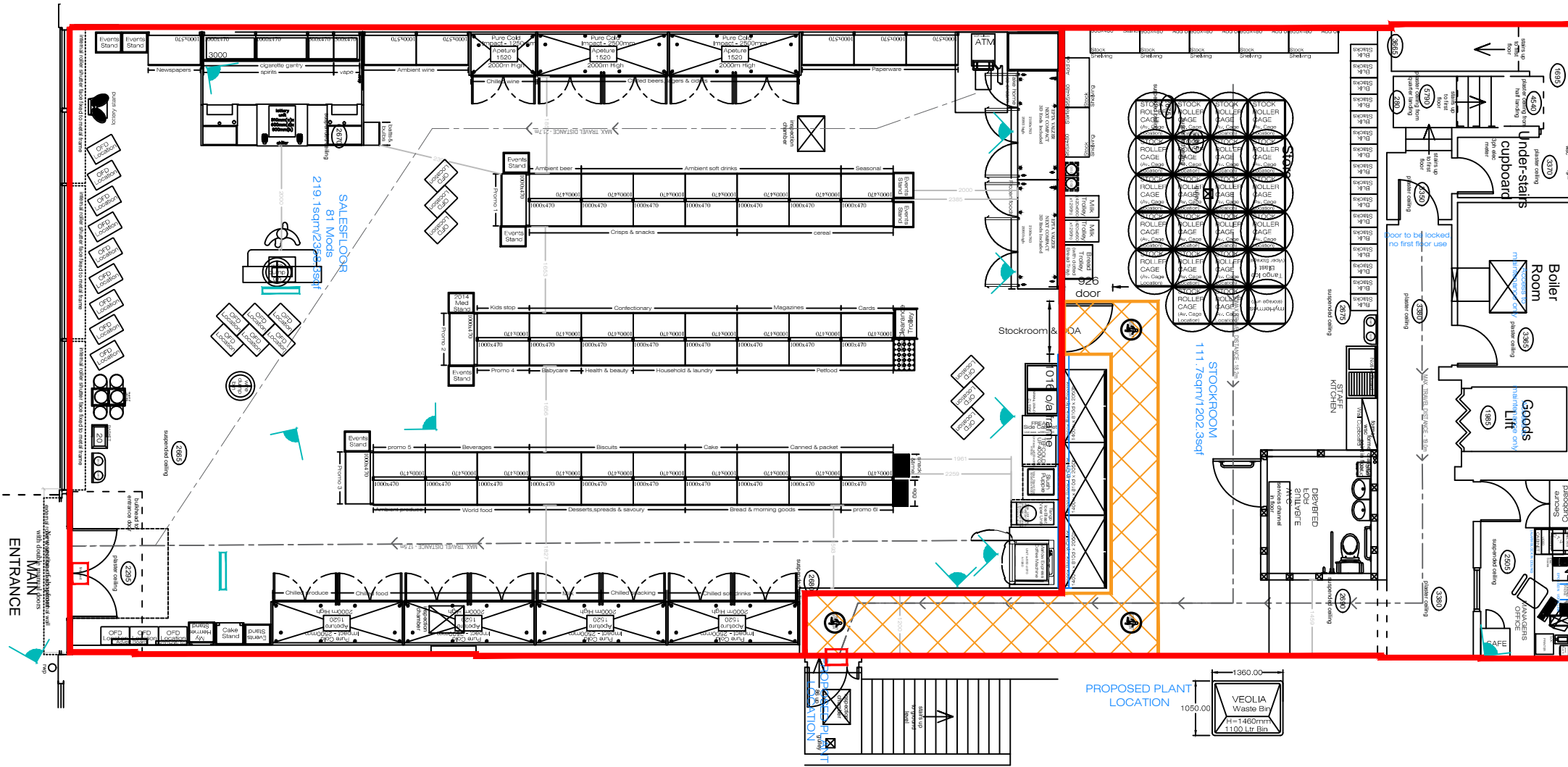
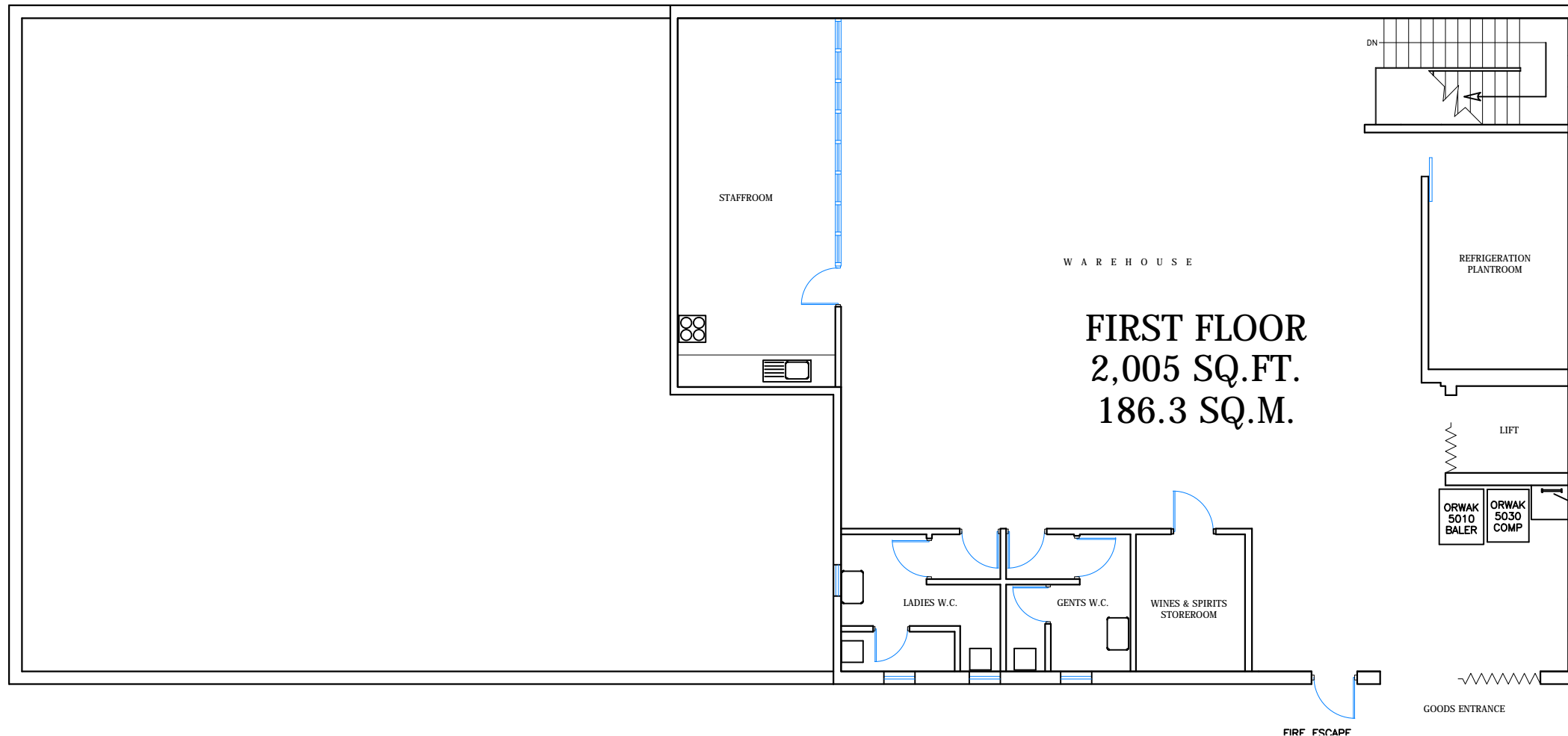
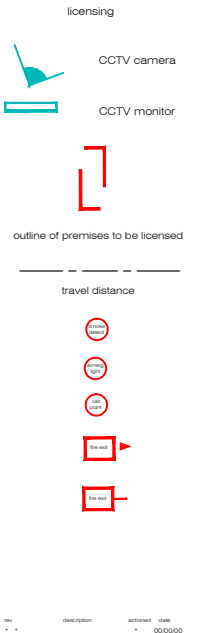


Existing Ground Floor Plan



building regulations
 PLEASE NOTE THE PROPOSED WORKS WILL BE CARRIED OUT IN COMPLIANCE WITH THE NOTES BELOW:
 EMERGENCY LIGHTING WILL COMPLY WITH BS5266 PART 1
 EMERGENCY EXIT SIGNS WILL COMPLY WITH BS5499 PART 1
 MAIN ENTRANCE DOOR COMPLIES WITH PARAGRAPHS 2:24
 FIRE ALARM COMPLIES WITH WITH BS5839 PART 1
 ALL EXIT DOORS PROVIDE A SIMPLE FASTENING. THIS IS OPERATED FROM THE ESCAPE SIDE AND IT WILL INCLUDE A FAILSAFE ON ACTIVATION OF THE FIRE ALARM
 SERVICE COUNTER HAS GIVEN CONSIDERATION TO WHEELCHAIR USERS AND IT WILL CONTAIN A SECTION NO HIGHER THAN 760MM AND 1500MM WIDE
 ANY NEW LIGHTING, COOLING AND VENTILATION WILL BE IN ACCORDANCE WITH THE NON DOMESTIC HEATING, COOLING AND VENTILATION GUIDE
 THE FIRE EXITS DOOR WILL LEAD TO A ULTIMATE PLACE OF SAFETY
 ALL VENTILATION WILL COMPLY WITH CIBSE GUIDE B:20055
 THE STAFF W/C WILL BE BUILT SO THE INTERNAL MEASUREMENTS ARE NO LESS THAN 2200 x 1500



category colours:
 ● impulse & promotions
 ● top up shipping
 ● food for now
 ● food for later
 ● off licence
 linear comparison:
 stock room size
 store profile:
 grocery eat later
 store fascia colour:
 (corporate/white/conservative)
 old grocery grading:
 old off-licence grading:
 large
 sales area: 219.1 m² / 236.4 sq ft
 stock area: 111.7 m² / 1202.3 sq ft
 post office: * m² / * sq ft
 project type:
 new store
 store address:
 1 bulwark road
 bulwark
 chepstow
 monmouthshire
 np16 5jn
 store code: 5161
 drawn by: [signature]
 date: [blank]
 scale: 1:50