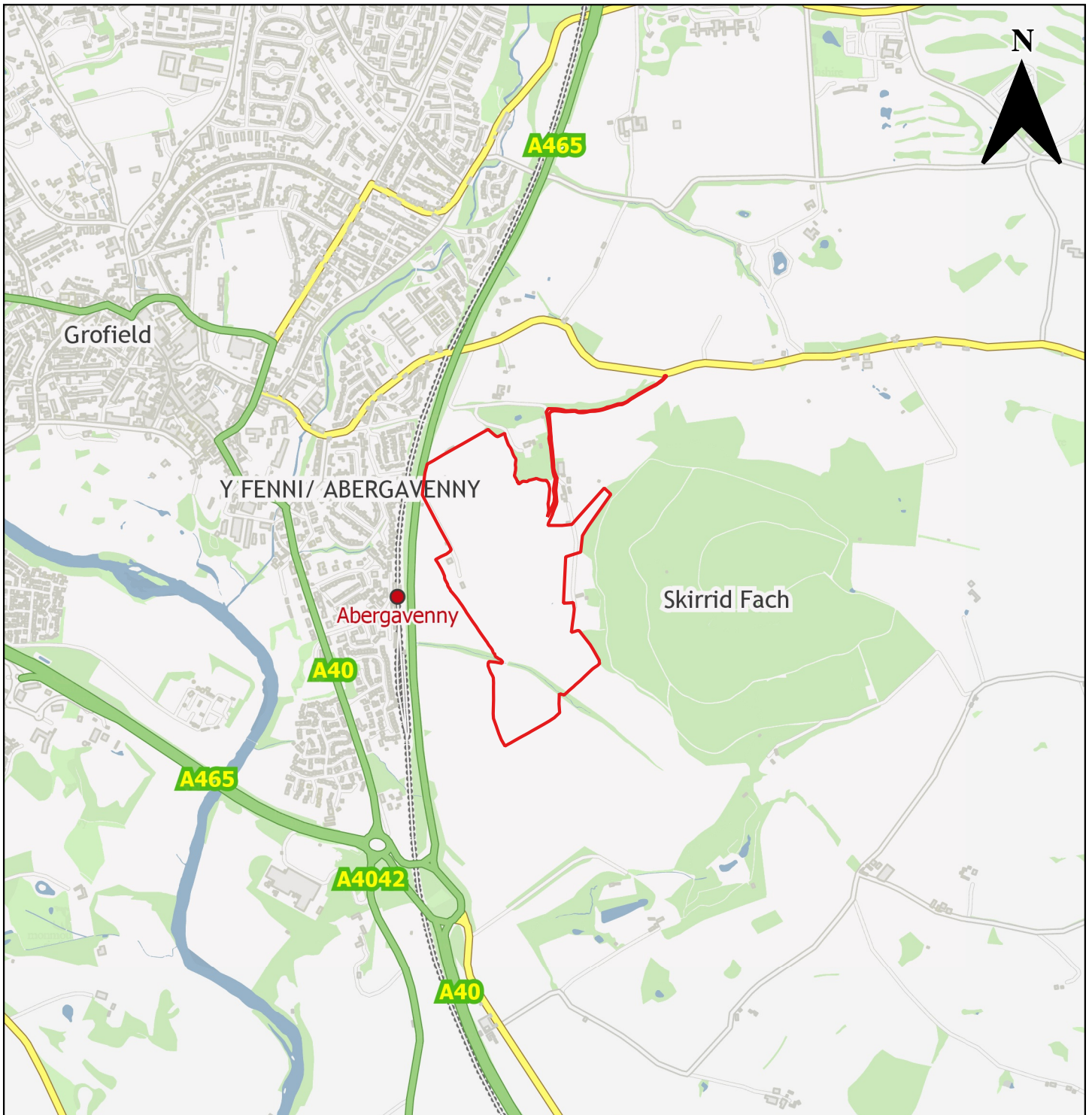



3. Index of Candidate Sites for Development/Redevelopment

LLANOVER WARD

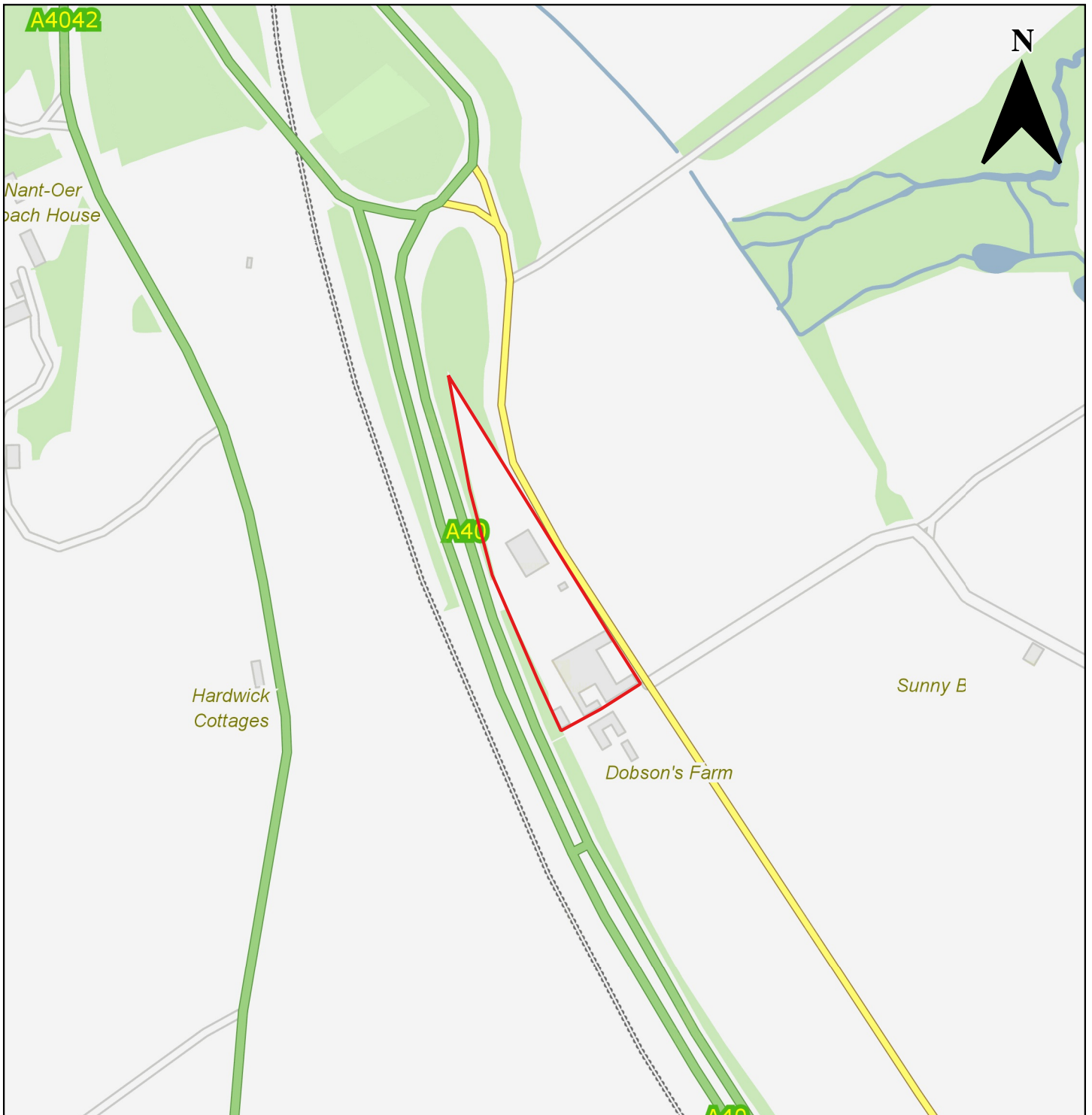
Electoral Ward	Candidate Site Reference No.	Site Name	Settlement	Current Use	Proposed Use	Site Proposer
Llanover	CS0213	Land east of A465	Abergavenny & Llanfoist	Agriculture	Mixed Use: Residential (C3), Employment (B1), Retail (A1), Leisure, Education and Community Use (D1 and D2)	Monmouthshire Housing Association (Geraint John Planning)
Llanover	CS0262	Dobsons Farm	Abergavenny & Llanfoist	Agriculture	Employment (B1/B8)	The Coldbrook Estate (RPS)
Llanover	CS0207	Land west of Llandewi Rhydderch	Llandewi Rhydderch	Agriculture	Residential	Messrs D & G Probert (Powells)
Llanover	CS0224	Cwm Pentref, New Community	Near Raglan	Agriculture	New Settlement	Llanarth Estates, Melin Homes, Tirion Homes, Candleston Homes and Sero Homes (LRM)
Llanover	CS0139	Land at Former Petrol Station	Llanover	Agriculture	Employment (B1) (including farmshop A1)	Llanover Estate (RPS)
Llanover	CS0140	Land south of Rhyd-y-Meirch	Llanover	Vacant grassland	Residential	Llanover Estate (RPS)




Candidate Site Number	CS0213
Site Name	Land east of A465
Site Promoter	Monmouthshire Housing Association
Settlement	Abergavenny
Ward	Llanover
Proposed Use	Mixed Use: Residential (C3), Employment (B1), Retail (A1), Leisure, Education and Community Use (D1, D2)
Site Size in hectares	24.75 ha

	Monmouthshire County Council, County Hall, Usk, The Rhadyr, Monmouthshire, NP15 1GA	
	(c) Ordnance Survey 10023415 2021	Not to Scale

[Return to index](#)




Candidate Site Number	CS0262
Site Name	Dobsons Farm
Site Promoter	The Coldbrook Estate
Settlement	Abergavenny
Ward	Llanover
Proposed Use	Employment (B1/B8)
Site Size in hectares	0.95 ha

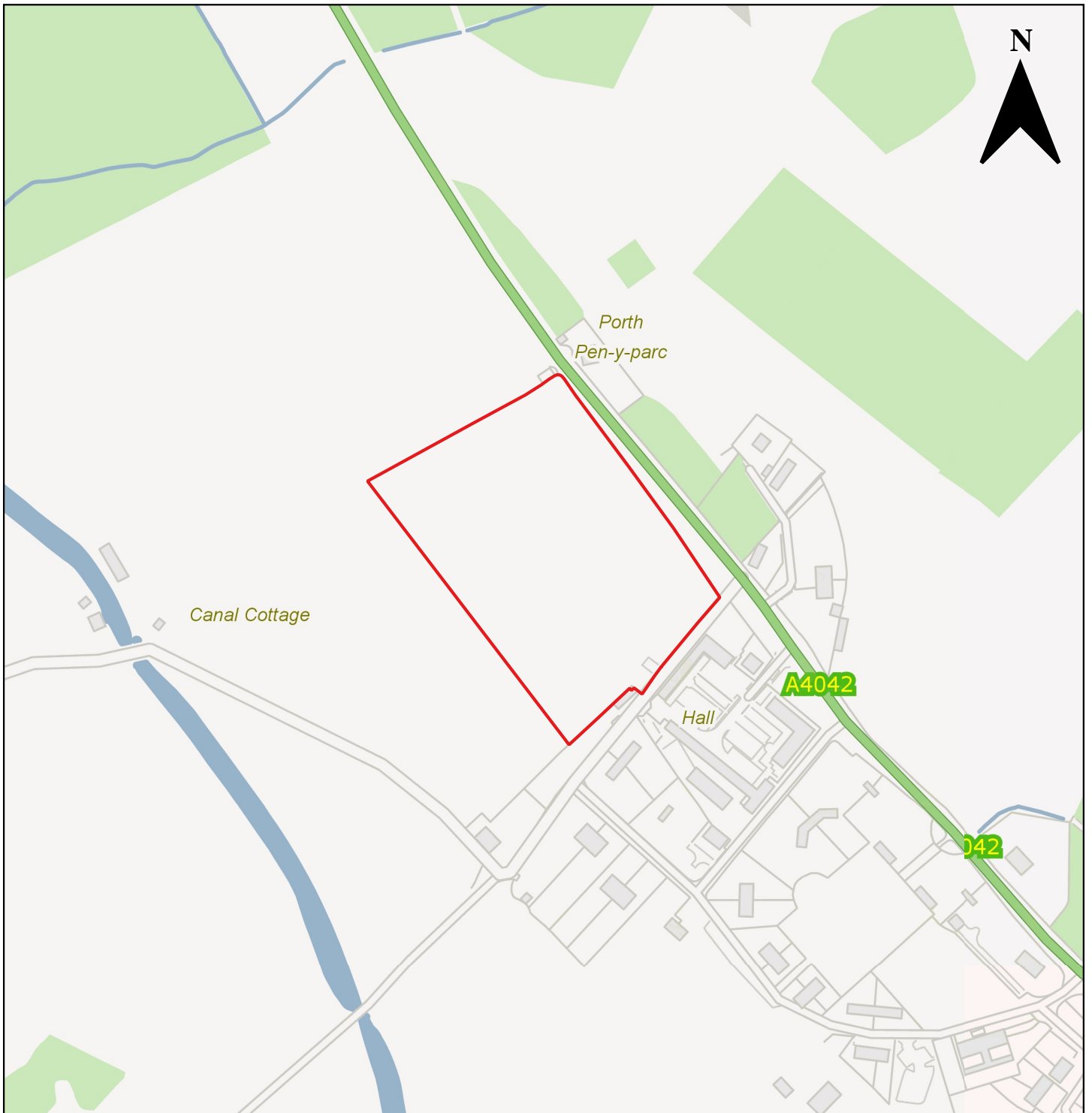
	Monmouthshire County Council, County Hall, Usk, The Rhadyr, Monmouthshire, NP15 1GA	
	(c) Ordnance Survey 10023415 2021	Not to Scale




Candidate Site Number	CS0207
Site Name	Land west of Llanddewi Rhydderch
Site Promoter	Messrs D&G Probert
Settlement	Llanddewi Rhydderch
Ward	Llanover
Proposed Use	Residential
Site Size in hectares	1.07 ha

	Monmouthshire County Council, County Hall, Usk, The Rhadyr, Monmouthshire, NP15 1GA	
	(c) Ordnance Survey 10023415 2021	Not to Scale

[Return to index](#)




Candidate Site Number	CS0139
Site Name	Land at former Petrol Station
Site Promoter	Llanover Estate
Settlement	Llanover
Ward	Llanover
Proposed Use	Employment (B1) (Including farm shop (A1))
Site Size in hectares	2.17 ha

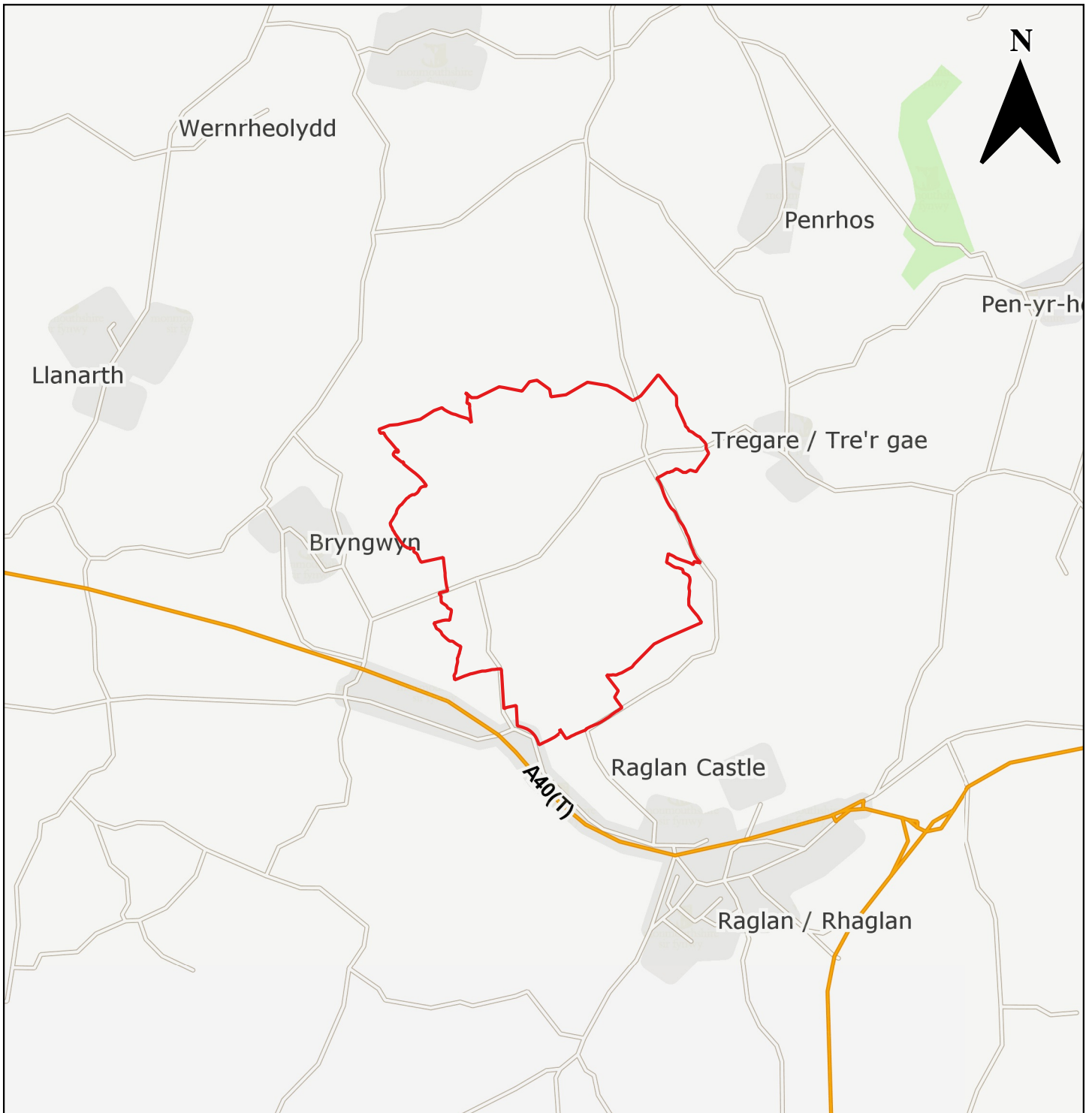
	Monmouthshire County Council, County Hall, Usk, The Rhadyr, Monmouthshire, NP15 1GA	
	(c) Ordnance Survey 10023415 2021	Not to Scale




Candidate Site Number	CS0140
Site Name	Land south of Rhyd-y-Meirch
Site Promoter	Llanover Estate
Settlement	Llanover
Ward	Llanover
Proposed Use	Residential
Site Size in hectares	1.24 ha

	Monmouthshire County Council, County Hall, Usk, The Rhadyr, Monmouthshire, NP15 1GA	
	(c) Ordnance Survey 10023415 2021	Not to Scale

[Return to index](#)



Candidate Site Number	CS0224
Site Name	Cwm Pentref New Community
Site Promoter	Llanarth Estates, Melin Homes, Tirion Homes, Candleston Homes and Sero Homes
Settlement	Raglan
Ward	Raglan, Llanover and Mitchel Troy
Proposed Use	New Settlement
Site Size in hectares	300.8 ha

	Monmouthshire County Council, County Hall, Usk, The Rhadyr, Monmouthshire, NP15 1GA	
	(c) Ordnance Survey 10023415 2021	Not to Scale