

# What is the Replacement Local Development Plan (RLDP)?

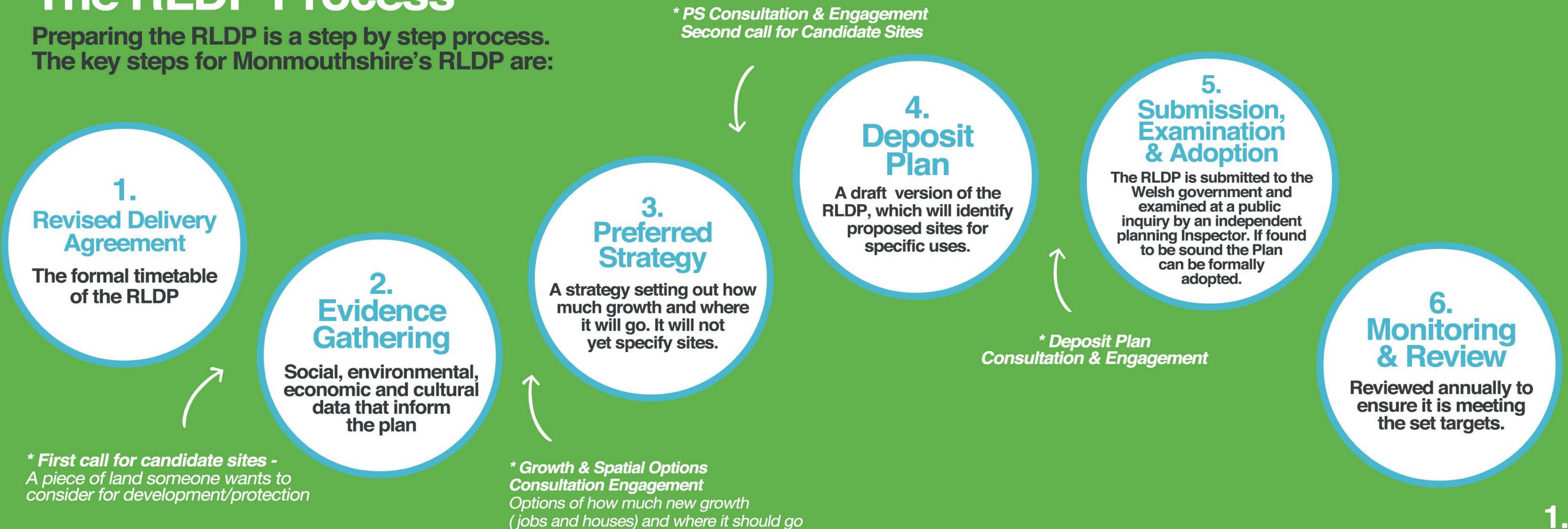
Monmouthshire County Council is preparing a Replacement Local Development Plan (RLDP) for the period from 2018 to 2033. The RLDP will allocate land for development, designate areas for protection and contain policies to provide the basis for decisions on planning applications. It will cover the whole of the County except for the part within the Brecon Beacons National Park.

Once adopted it will support and enable development that contributes to the vision and makes Monmouthshire a more attractive place to live, work and visit for current and future generations, while resisting inappropriate development. It will be a key tool to deliver the Council's core purpose of helping to build sustainable and resilient communities that support the well-being of current and future generations.



## The RLDP Process

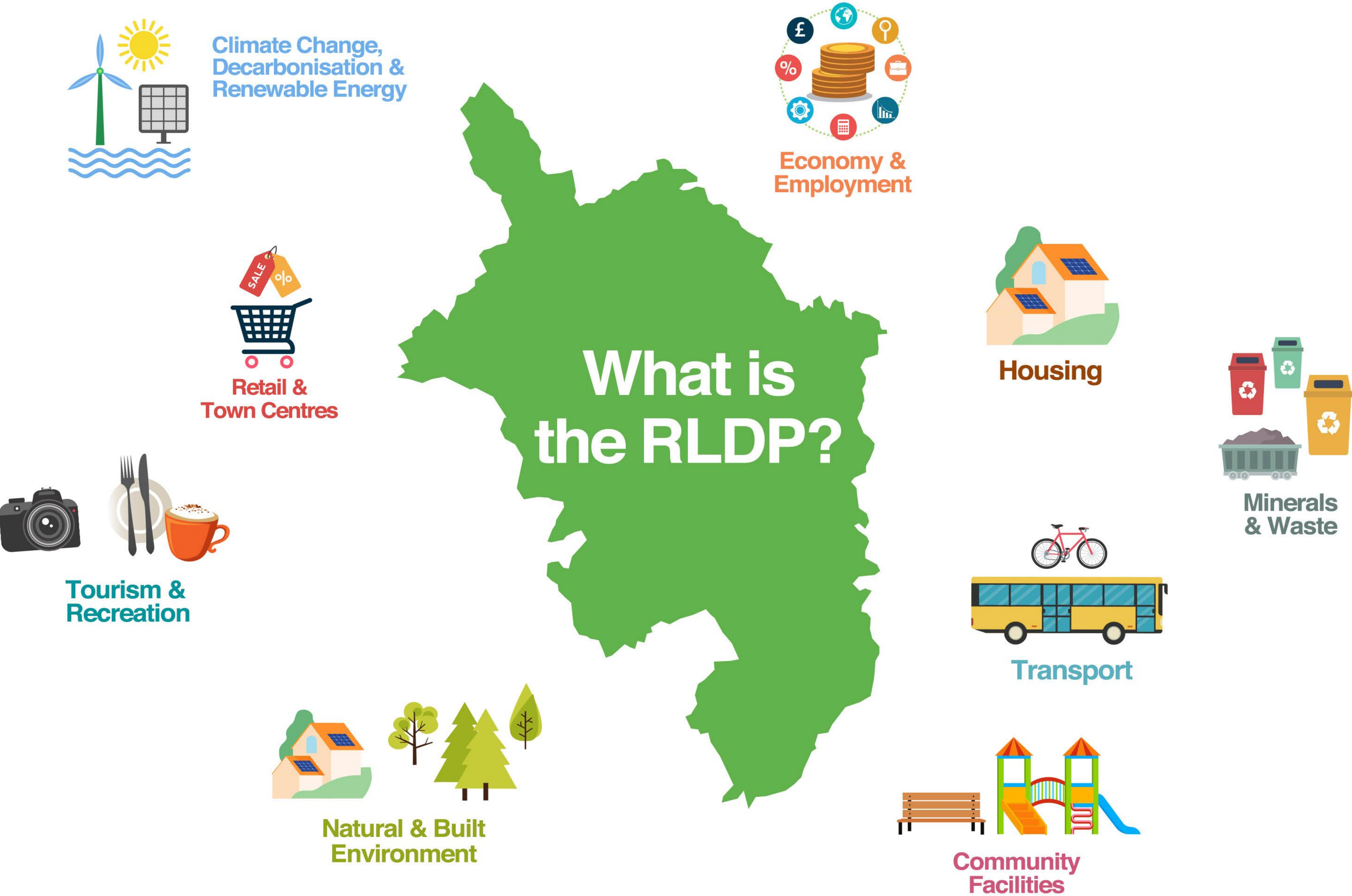
Preparing the RLDP is a step by step process. The key steps for Monmouthshire's RLDP are:





The environmental, equalities, health and well-being impacts of the Plan will be considered in an Integrated Sustainability Appraisal. This is a working document and will be updated as the RLDP progresses.

The RLDP will consider the following topics:





# Our Key Issues, Challenges and Opportunities

## The Issues

The Issues, Vision and Objectives Paper identifies the key issues, challenges and opportunities facing the County (economic, environmental, social and cultural). 38 issues have been identified. These were informed by a range of evidence, in particular the public engagement underpinning Monmouthshire's Public Service Board Well-being Plan.

*These issues, challenges and opportunities have been re-assessed and endorsed by the Council in October 2020 that they still remain relevant in light of the COVID-19 pandemic.*





## What do we want Monmouthshire to look like by 2033?

### The Vision

The proposed Monmouthshire RLDP Vision is that by 2033, Monmouthshire will be a place where:

1. People are living in sustainable, resilient communities that support the well-being of current and future generations and are more inclusive, cohesive, prosperous, vibrant and balanced demographically. Both urban and rural communities are well-connected with better access to local services and facilities, open space and employment opportunities.
2. Communities and businesses are part of an economically thriving and well-connected County.
3. The best of the County's built heritage, countryside, landscape and environmental assets have been protected and enhanced to retain its distinctive character.
4. People enjoy healthier, more sustainable lifestyles with improved access to public transport and active travel opportunities and have a minimised impact on the global environment.

The spatial element of the vision will be determined following the preparation of the Preferred Strategy.



# What goals do we need to set to achieve that vision?

## The Objectives

17 objectives have been written to set out how the Issues will be addressed and the Vision delivered. These have been reviewed and amended following public consultation and following the Council's declaration of a climate emergency on 16<sup>th</sup> May 2019.

### 1. Economic Growth / Employment



To support a thriving, well-connected, diverse economy, which provides a range of good quality employment opportunities to enable and encourage indigenous business growth and attract inward investment and competitive innovative businesses in appropriate growth sectors, including through the provision of start-ups and grow on spaces.

### 2. Retail Centres



To sustain and enhance the County towns of Abergavenny, Chepstow, Monmouth, Caldicot and Usk as vibrant and attractive retail centres serving their own populations and those of their surrounding hinterlands, along with increasing the potential customer base through future growth whilst recognising that the role of these centres is evolving.

### 3. Green Infrastructure, Biodiversity and Landscape



To protect, enhance and manage Monmouthshire's natural environment and ecosystems. This includes, the Wye Valley Area of Outstanding Natural Beauty, the County's other high quality and distinctive landscapes, protected sites, protected species and other biodiversity interests, along with the connectivity between them by creating new linkages for them to adapt while at the same time maximising benefits for the economy, tourism, health and well-being.

### 4. Flood Risk



To ensure that new development takes account of the risk of flooding, both existing and in the future, including the need to avoid inappropriate development in areas that are at risk from flooding or that may increase the risk of flooding elsewhere and the need to design development to appropriately manage surface water run-off.



## 5. Minerals & Waste



To meet the County's regional and local obligations to manage and dispose of its waste and to safeguard and exploit its mineral resource in a sustainable fashion.

## 6. Land



To promote the efficient use of land, including the need to maximise opportunities for development on previously developed land, whilst recognising that brownfield opportunities are limited in Monmouthshire.

## 7. Natural Resources



To promote the efficient use of natural resources including providing increased opportunities for water efficiency, energy efficiency, renewable energy, recycling and waste reduction.

## 8. Health & Well-being



To improve access for all ages to recreation, sport, leisure activities, open space and the countryside and to enable healthier lifestyles.

## 9. Demography



To increase opportunities for the younger population to both live and work within Monmouthshire to assist in ensuring a balanced demography.

## 10. Housing



To provide a level of housing that is sufficient to provide a wide ranging choice of homes both for existing and future residents, while ensuring that local needs for appropriate, affordable and accessible housing are met as far as possible, particularly in towns but also in rural areas, so long as such housing can assist in building sustainable balanced communities.

## 11. Place-making



To promote good quality sustainable design and layouts that enhance the character and identity of Monmouthshire's settlements and countryside; create attractive, safe and accessible places to live, work and visit; and promote people's prosperity, health, happiness and well-being.



## 12. Communities



To build sustainable resilient communities where people have good access to employment, shops, housing, public transport, active travel, healthcare, community and cultural facilities.

## 13. Rural Communities



To sustain existing rural communities as far as possible by providing development opportunities of an appropriate scale and location in rural areas in order to assist in building sustainable rural communities and strengthening the rural economy.

## 14. Infrastructure



To ensure that appropriate physical and digital infrastructure (including community and recreational facilities, sewerage, water, transport, schools, health care and broadband etc.) is in place or can be provided to accommodate new development.

## 15. Accessibility



To seek to reduce the need to travel by promoting a mix of land use allocations and improved internet connectivity, and where travel is required, to provide opportunities for active travel and integrated sustainable transport.

## 16. Culture, Heritage & Welsh Language



To protect and enhance the built environment, culture and heritage of Monmouthshire for the future while maximising benefits for the economy, tourism and social well-being, including supporting and safeguarding the Welsh Language.

## 17. Climate Change



To strive to limit the increase in global temperatures to 1.5°C, supporting carbon reduction through a variety of measures including the use of renewable energy, the design and location of new development, encouraging balanced job and population growth to reduce out-commuting, the provision of broadband connectivity to reduce the need to travel, the provision of ultra-low emission vehicle charging infrastructure to reduce emissions and improve air quality, and the provision of quality Green Infrastructure.



The Issues, Vision and Objectives Paper lists these objectives under the most relevant Well-being goals from the Well-being of Future Generations Act 2015, and matches them against the RLDP issues, the themes from Planning Policy Wales edition 11, and against the PSB Monmouthshire Well-being Plan (see Table 4.1).

The Vision and Objectives will be used to assess proposed options about how much growth (jobs and houses) Monmouthshire should accommodate by 2033, and broadly where that growth could be located. These are the Growth and Spatial Options.

Following consultation, the preferred growth and spatial options that best achieve the vision and objectives will be selected as the Preferred Strategy. There will be further consultation and community engagement on the Preferred Strategy and at the Deposit Plan (proposed site allocations stage).

The RLDP will include an Infrastructure Plan, setting out what facilities are needed to support proposed developments. It will sit alongside a Local Transport Plan and an Economic Strategy. The Infrastructure and Transport plans will be produced at the Deposit plan stage, when sites have started to be identified. Together, these Plans will seek to deliver on the Council's economic ambition and its core purpose to build sustainable and resilient communities that support the well-being of current and future generations.