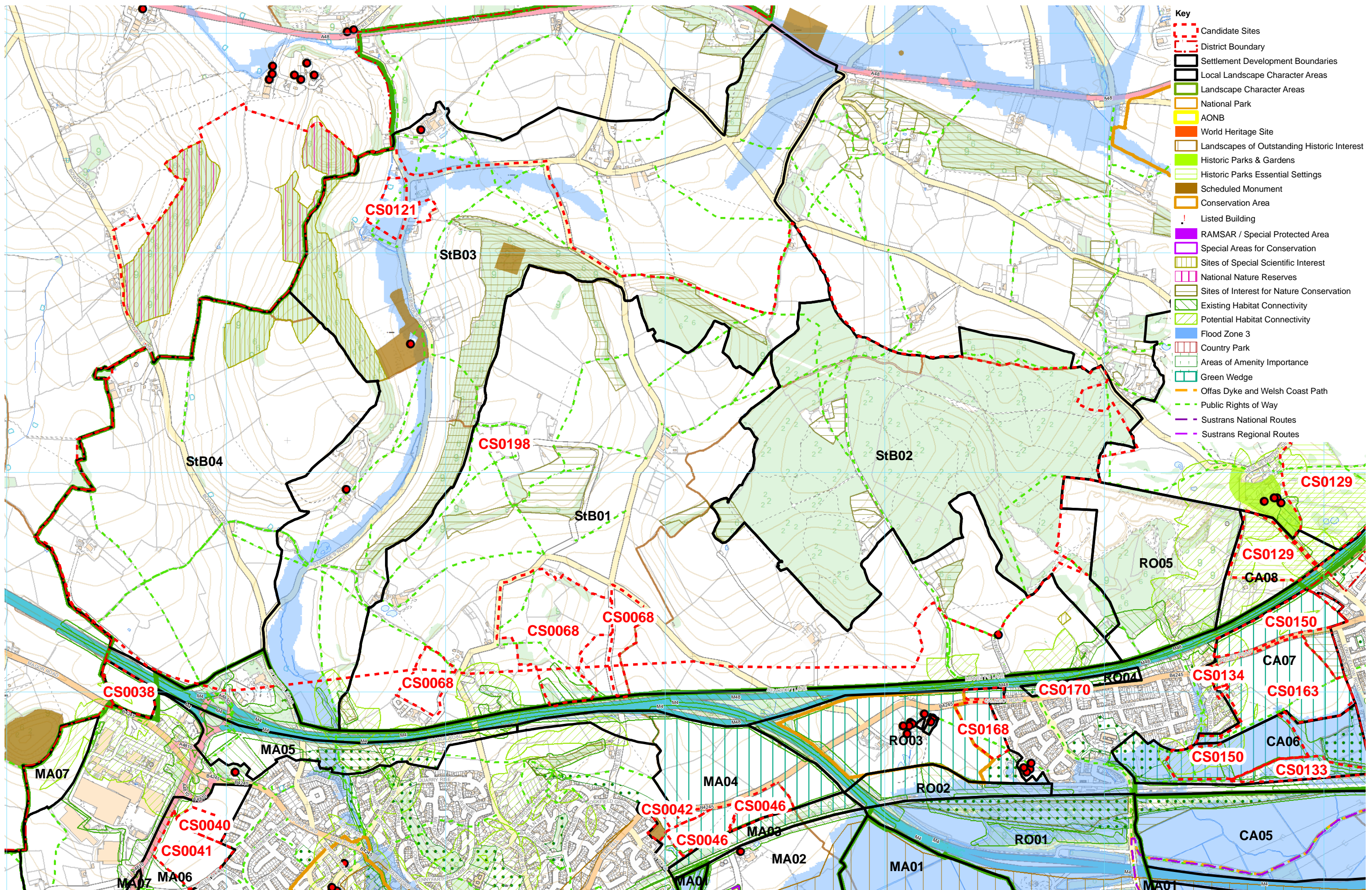


St Brides candidate sites

Site reference	Sensitivity
CS0068	High/medium
CS0198	High/medium
CS0121	High/medium

The candidate sites within this section are within the relevant settlement LLCAs. Other candidate sites in the area/vicinity not included in this section are included within adjacent settlement assessments.



- Key**
- Candidate Sites
 - District Boundary
 - Settlement Development Boundaries
 - Local Landscape Character Areas
 - Landscape Character Areas
 - National Park
 - AONB
 - World Heritage Site
 - Landscapes of Outstanding Historic Interest
 - Historic Parks & Gardens
 - Historic Parks Essential Settings
 - Scheduled Monument
 - Conservation Area
 - Listed Building
 - RAMSAR / Special Protected Area
 - Special Areas for Conservation
 - Sites of Special Scientific Interest
 - National Nature Reserves
 - Sites of Interest for Nature Conservation
 - Existing Habitat Connectivity
 - Potential Habitat Connectivity
 - Flood Zone 3
 - Country Park
 - Areas of Amenity Importance
 - Green Wedge
 - Offas Dyke and Welsh Coast Path
 - Public Rights of Way
 - Sustrans National Routes
 - Sustrans Regional Routes



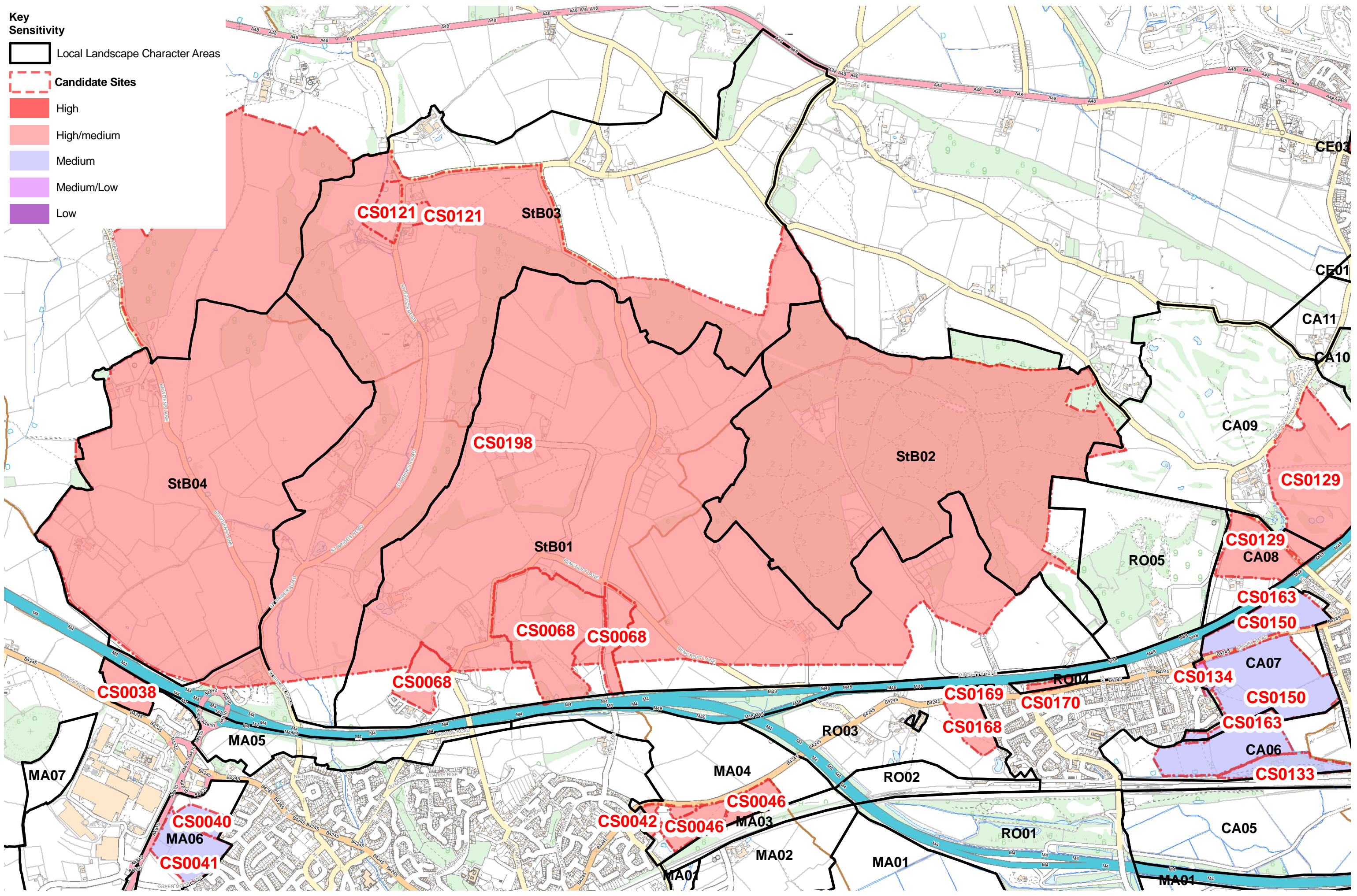
© Hawlfraint y Goron a hawliau cronfa ddata 2019 Arolwg Ordnans 100023415
 © Crown copyright and database rights 2019 Ordnance Survey 100023415
 www.whiteconsultants.co.uk

Project: Monmouthshire Landscape Sensitivity Study
 Client: Monmouthshire County Council
 Date: February 2020
 Status: Revision1

Settlement: St Brides Site Constraints

Key Sensitivity

- Local Landscape Character Areas
- Candidate Sites
- High
- High/medium
- Medium
- Medium/Low
- Low



0 0.25 0.5 1 Kilometres



© Hawlfraint y Goron a hawliau cronfa ddata 2019 Arolwg Ordnans 100023415
 © Crown copyright and database rights 2019 Ordnance Survey 100023415
 www.whiteconsultants.co.uk

Project: Monmouthshire Landscape Sensitivity Study
 Client: Monmouthshire County Council
 Date: February 2020
 Status: Revision 1

St Brides
Landscape Sensitivity of Candidate Sites

SUMMARY

Key characteristics

Minor rounded ridge gently sloping to the south and north with steeper slopes to the east and west. Mainly irregular medium and small sized fields with mix of outgrown and low cut hedgerows. Trees in small woodland copses and gardens with some in hedgerows. Limited scattered rural settlement of farmsteads and dwellings with small cluster around Knollbury, an informal but permanent static/touring caravan site associated with farm buildings to the south west and a small commercial premises. The area is rural with a clear definition of the M4 and M48 defining the current edge of suburban settlement. Views to the Severn Estuary in places. The woodland copses provide the local skyline. Parts of the area are enclosed by high hedges and trees but other areas are very open, especially to the east. The area's tranquillity is disturbed by the M4 and M48 and views of settlement to the south.

Landscape sensitivity high/medium* *A standard methodology relating to housing development has been applied to all assessments. The suitability for other development such as employment has not been assessed at this stage.

The susceptibility of the site lies in its predominantly open pasture slopes rising up from the motorways to the east in particular and from St Bride's Brook valley to the west, forming a rural backcloth to the more developed lower land to the south, the role of the motorways as a strong dividing line with suburban settlement to the south in contrast to the essentially rural character and open countryside of this site, the small irregular field pattern with associated woodland copses, trees and hedges. The value of the area lies in the listed windmill, the woodland and calcareous areas grassland SINCs, the scenic qualities of the area enclosed by woodland and wide views in parts over the Severn estuary. LANDMAP value is high for historic landscapes, cultural landscapes and geological landscapes.

Does the site or its attributes contribute to the Wellbeing and Future Generations Act Goals?

- a prosperous Wales
- a resilient Wales
- a healthy Wales
- a more equal Wales
- a Wales of cohesive communities
- a Wales of vibrant culture and thriving Welsh language

LLCA CONTEXT

IICA number STB01

IICA sensitivity High/medium

Relationship of site with IICA Three sites on the southern edge of StB01 on the lower slopes adjacent to the M4 motorway.

LANDMAP CONTEXT

Geological landscapes

Number MNMTHGL090

Value High

Landscape habitats

Number MNMTHLH054

Value Moderate

Visual and sensory

Number MNMTHVS098

Value Moderate

Historical landscapes

Number MNMTHHL010

Value High

Cultural landscapes

Number MNMTHCL007

Value High

Landscape Character Area

Number STB01 **also includes**

DESIGNATIONS

National Park AONB

Landscape designations comments

-

Landscape of Hist. interest **Historic Parks and Gardens**

Hist.Parks and Gardens essential setting

SAM **Conservation Area** **Listed Building** **World Heritage Site**

Historic / archaeology designations comments -

SAC **NNR** **SINC** **SSSI** **RAMSAR**

Biodiversity designations comments -

Other

Country Park **National Trail** **National / Regional Cycle Route**

SUMMARY

Key characteristics

Fields lie in flat bottomed valley of St Brides Brook with very well defined steep sides away from the site to the east and west.

The field to west is in the main valley floor, partly in floodplain, and is slightly crowned and arable enclosed by low-cut hedges and St Brides Brook to the west with some riparian vegetation. Detached houses lie to the north and east and one isolated house lies to the south west.

The paddock to the east is small and irregular and fringed with low cut hedges with detached houses, a plant nursery and a barn on three sides with an open arable field to the east.

The dwellings are generally 20c and incremental and linear in character with the exception of a small cluster to the south.

The setting of the valley is scenic with the valley floor seen against the wooded valley sides.

The valley is very tranquil and well enclosed.

A PROW crosses the eastern field and runs to the south.

Historic interest lies in the listed buildings to the north and south.

Landscape sensitivity high/medium

The susceptibility of the sites lie in their location in a highly rural valley located a long way from the main settlements, the tranquil and distinctive character of the valley to which the eastern field contributes with attractive views across it, the presence of the floodplain and St Brides Brook and associated riparian corridor. The value of the sites lie in the scenic quality of well-defined vistas up and down the valley framed by woodland and valley sides and the PROW crossing the eastern field. LANDMAP value is high for historic landscape and cultural landscape. Development on the eastern field would be highly inappropriate in this rural location. Some carefully designed low-density vernacular style or passivhaus /zero carbon in operation development with large gardens/plots in the eastern part may be appropriate.

Does the site or its attributes contribute to the Wellbeing and Future Generations Act Goals?

- a prosperous Wales a resilient Wales a healthy Wales a more equal Wales
 a Wales of cohesive communities a Wales of vibrant culture and thriving Welsh language

LLCA CONTEXT

LLCA number STB03

LLCA sensitivity High

Relationship of site with LLCA Two separate fields in valley floor of StB03.

LANDMAP CONTEXT

Geological landscapes

Number MNMTHGL081

Value Moderate

Landscape habitats

Number MNMTHLH049

Value Low

Visual and sensory

Number MNMTHVS098

Value High

Historical landscapes

Number MNMTHHL010

Value High

Cultural landscapes

Number MNMTHCL007

Value High

Landscape Character Area

Number STB03 **also includes**

DESIGNATIONS

National Park AONB

Landscape designations comments

-

Landscape of Hist. interest **Historic Parks and Gardens**

Hist.Parks and Gardens essential setting

SAM **Conservation Area** **Listed Building** **World Heritage Site**

Historic / archaeology designations comments -

SAC **NNR** **SINC** **SSSI** **RAMSAR**

Biodiversity designations comments -

Other

Country Park **National Trail** **National / Regional Cycle Route**

SUMMARY

Key characteristics

The definitive key characteristics are described in the respective LLCAs. In summary:
 Smoothly undulating landscape sloping predominantly southwards with pronounced slopes towards the south and west, and the flat bottomed valley of St Brides Brook with very well defined steep sides.
 Mix of regular and irregular medium sized pastoral and arable fields with mainly low cut hedgerows with outgrown hedgerows around Knollbury.
 Slade Wood and Thickett Wood form a large mixed woodland and conifer plantation to the east forming a strong skyline and backcloth when viewed from lower land.
 Other broadleaf woodland, generally in narrower belts, forms a distinctive enclosure on the steep slopes of the St Brides Brook valley and a backcloth and skyline to the broader landscape to the east and west. There are a few trees in hedgerows around Knollbury.
 Limited scattered rural settlement of farmsteads and dwellings with more modern small rural clusters north of St Brides Netherwent's original historic core and a small cluster around Knollbury.
 There is well-defined enclosure of the St Brides Brook valley sides and the dry valley to the west and the combination of landform with woodland in places exhibit particular scenic quality.
 Outside the enclosed woodland to the east, the rest of the area is predominantly open slopes overlooking the levels towards the Prince of Wales bridge and the Severn Estuary.
 The area is rural with a clear definition of the M4 and M48 defining the current edge of suburban settlement, and views from the motorways to it.
 The area's tranquillity is disturbed by the M4 and M48 and views of settlement to the south but increases to the north especially in St Brides Brook valley.
 Public access is in Slade Wood and in the PROWs which criss-cross the rest of the area.
 There are a series of key features and places (especially the listed buildings) which contribute to the area's special character. St Brigid's Church and the Old Windmill are landmarks.
 Historic interest includes St Brigid church listed building, St Bride's Netherwent Deserted Medieval Village SM, The Larches Camp prehistoric hillfort SM, Pen-y-lan listed farmhouse, Salisbury listed farmhouse and the Old Windmill which is also listed.
 Biodiversity interest includes Penhow Woodlands SSSI, Grange Wood and the Larches SINC, Upper Severn Acres SINC, Common y Coed calcareous grassland SINC and woodland west of Common y Coed SINC.

Landscape sensitivity high/medium* *A standard methodology relating to housing development has been applied to all assessments. The suitability for other development such as employment has not been assessed at this stage.

The sensitivity of StB02 and StB03 is high and is high/medium for StB01 and StB04, and their summaries are the definitive judgements on sensitivity.
 In summary, the susceptibility lies in the open rural character of the area highly visible and acting as a rural backcloth from the south, the role of the motorways as a strong dividing line with suburban settlement to the south, St Bride's Brook valley enclosed by the distinctive steep valley sides which are wooded in part, and the dry valley to the west, the riparian corridor of St Bride's Brook with its associated floodplain, the strong mixed woodland character of Slade Wood and Thicketts Wood and the role of all the woodlands as skylines visible to the north and south, the area's historic settlement and features and the public access in Slade Wood and PROWs. The value of the area lies in the listed buildings including St Brigid Church, farmsteads and windmill and the two scheduled monuments, its biodiversity interest including SSSI and SINC woodlands, and its scenic quality of well-defined vistas up and down the valleys framed by woodland and valley sides, the tranquil character to the north, and the occasional landmarks of rural buildings. LANDMAP value is high for historic landscape and cultural landscape and for a proportion of the area, for landscape habitats and geological landscapes.

Does the site or its attributes contribute to the Wellbeing and Future Generations Act Goals?

- a prosperous Wales
- a resilient Wales
- a healthy Wales
- a more equal Wales
- a Wales of cohesive communities
- a Wales of vibrant culture and thriving Welsh language

LLCA CONTEXT

LLCA number STB01 STB03 STB2 STB04

IICA sensitivity	High/medium	High	High	High/medium
Relationship of site with IICA	Very large site proposed as a new settlement incorporating the majority of StB01, StB02, StB03, StB04. Also extending into Newport City Council area towards Penhow.			

LANDMAP CONTEXT

Geological landscapes

Number	MNMTHGL090	MNMTHGL082	MNMTHGL081	MNMTHGL02
Value	High	Moderate	Moderate	High

Landscape habitats

Number	MNMTHLH054	MNMTHLH050	MNMTHLH049	NWPRTLH026
Value	Moderate	High	Low	Low

Visual and sensory

Number	MNMTHVS098	MNMTHVS030
Value	Moderate	Moderate

Historical landscapes

Number	MNMTHHL010	MNMTHHL010	MNMTHHL003
Value	High	High	Moderate

Cultural landscapes

Number	MNMTHCL007	MNMTHCL026	MNMTHCL005
Value	High	High	High

Landscape Character Area

Number	STB01	also includes	STB03	STB2	STB04
---------------	-------	----------------------	-------	------	-------

DESIGNATIONS

National Park AONB

Landscape designations comments

-

Landscape of Hist. interest Historic Parks and Gardens

Hist.Parks and Gardens essential setting

SAM Yes **Conservation Area** **Listed Building** Yes **World Heritage Site**

Historic / archaeology designations comments St Brigid church listed building, St Bride's Netherwent Deserted Medieval Village SM, The Larches Camp prehistoric hillfort SM, Pen-y-lan listed farmhouse, Salisbury listed farmhouse, Old Windmill listed building.

SAC **NNR** Yes **SINC** Yes **SSSI** Yes **RAMSAR**

Biodiversity designations comments Penhow Woodlands SSSI, Grange Wood and the Larches SINC, Upper Severn Acres SINC, Common y Coed calcareous grassland SINC, woodland west of Common y Coed SINC

Other

Country Park **National Trail** **National / Regional Cycle Route**