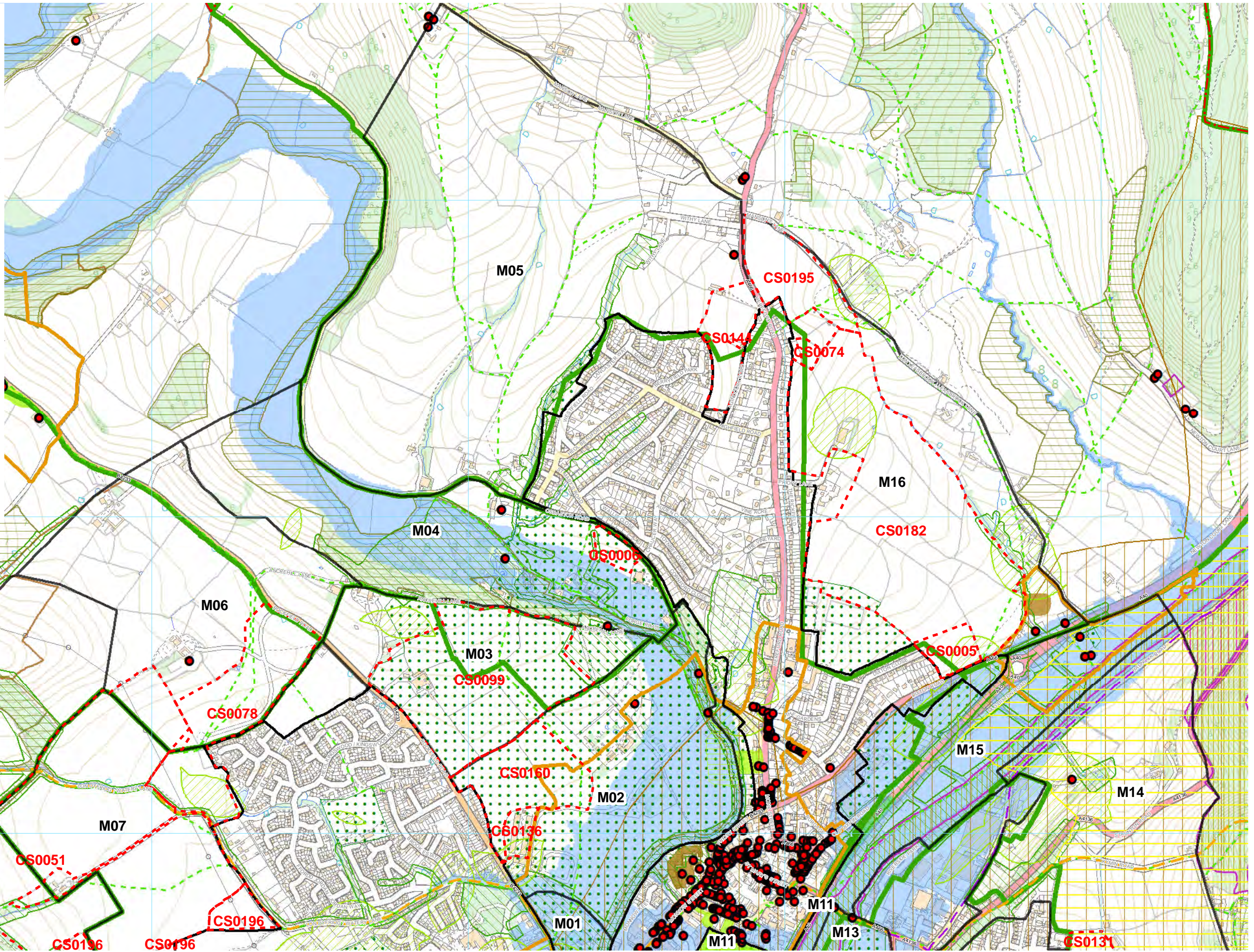


Monmouth candidate sites

| Site reference | Sensitivity |
|----------------|-------------|
| CS0005 | High/medium |
| CS0006 | High/medium |
| CS0012 | Medium |
| CS0051 | High/medium |
| CS0074 | High/medium |
| CS0078 | High/medium |
| CS0090 | Medium |
| CS0099 | High/medium |
| CS0131 | High |
| CS0136 | High/medium |
| CS0144 | High/medium |
| CS0151 | High/medium |
| CS0160 | High/medium |
| CS0162 | High/medium |
| CS0182 | High/medium |
| CS0195 | High/medium |
| CS0196 | Medium |

The candidate sites within this section are within the relevant settlement LLCAs. Other candidate sites in the area/vicinity not included in this section are included within adjacent settlement assessments.

- Key**
- Candidate Sites
 - District Boundary
 - Settlement Development Boundaries
 - Local Landscape Character Areas
 - Landscape Character Areas
 - National Park
 - AONB
 - World Heritage Site
 - Landscapes of Outstanding Historic Interest
 - Historic Parks & Gardens
 - Historic Parks Essential Settings
 - Scheduled Monument
 - Conservation Area
 - Listed Building
 - RAMSAR / Special Protected Area
 - Special Areas for Conservation
 - Sites of Special Scientific Interest
 - National Nature Reserves
 - Sites of Interest for Nature Conservation
 - Existing Habitat Connectivity
 - Potential Habitat Connectivity
 - Flood Zone 3
 - Country Park
 - Areas of Amenity Importance
 - Green Wedge
 - Offas Dyke and Welsh Coast Path
 - Public Rights of Way
 - Sustrans National Routes
 - Sustrans Regional Routes



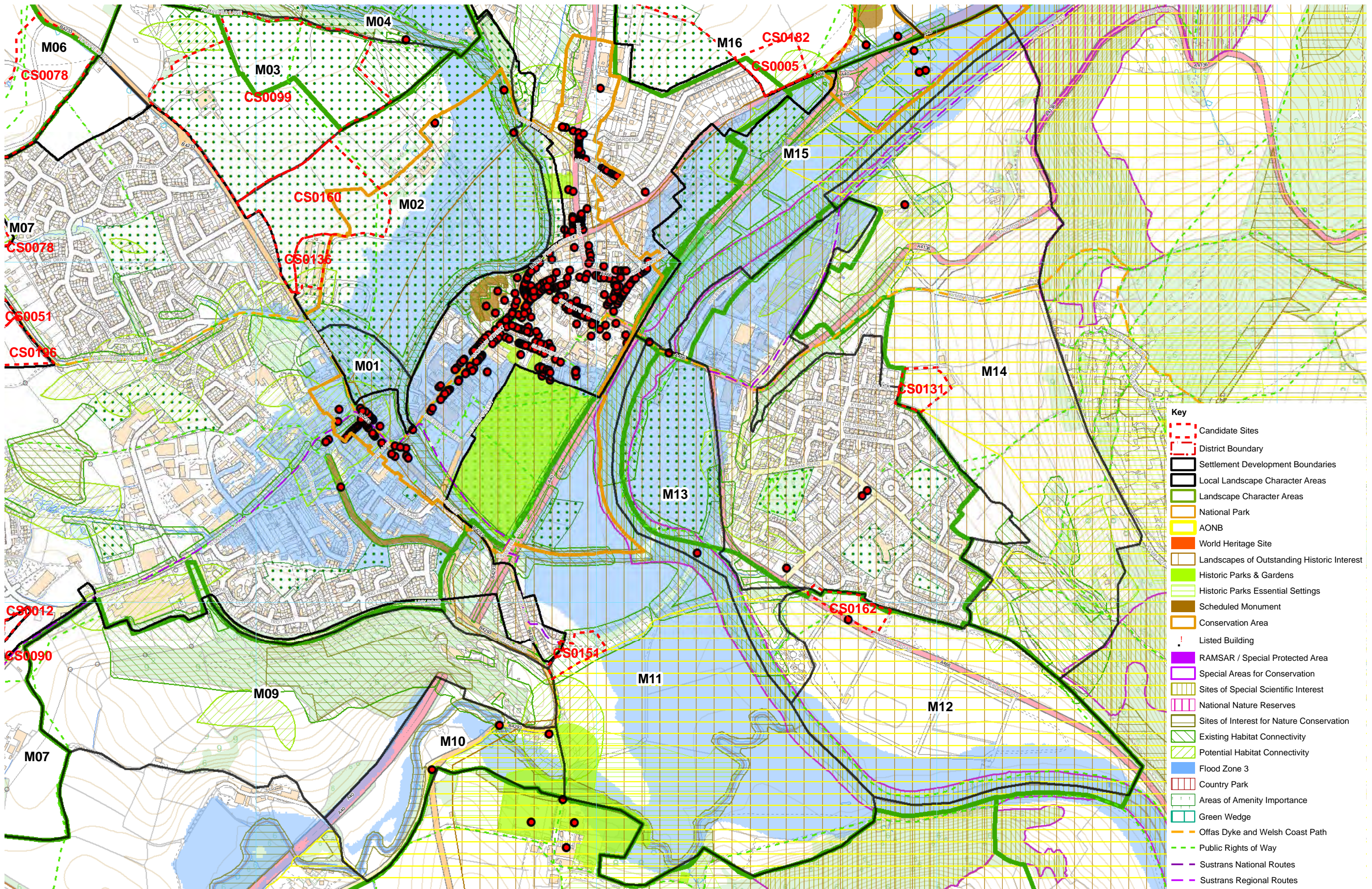
0 0.125 0.25 0.5 Kilometres



© Hawlfraint y Goron a hawliau cronfa ddata 2019 Arolwg Ordnans 100023415
 © Crown copyright and database rights 2019 Ordnance Survey 100023415
 www.whiteconsultants.co.uk

Project: Monmouthshire Landscape Sensitivity Study
 Client: Monmouthshire County Council
 Date: November 2019
 Status: Final

Settlement: Monmouth North
Site Constraints



- Key**
- Candidate Sites
 - District Boundary
 - Settlement Development Boundaries
 - Local Landscape Character Areas
 - Landscape Character Areas
 - National Park
 - AONB
 - World Heritage Site
 - Landscapes of Outstanding Historic Interest
 - Historic Parks & Gardens
 - Historic Parks Essential Settings
 - Scheduled Monument
 - Conservation Area
 - ! Listed Building
 - RAMSAR / Special Protected Area
 - Special Areas for Conservation
 - Sites of Special Scientific Interest
 - National Nature Reserves
 - Sites of Interest for Nature Conservation
 - Existing Habitat Connectivity
 - Potential Habitat Connectivity
 - Flood Zone 3
 - Country Park
 - Areas of Amenity Importance
 - Green Wedge
 - Offas Dyke and Welsh Coast Path
 - Public Rights of Way
 - Sustrans National Routes
 - Sustrans Regional Routes

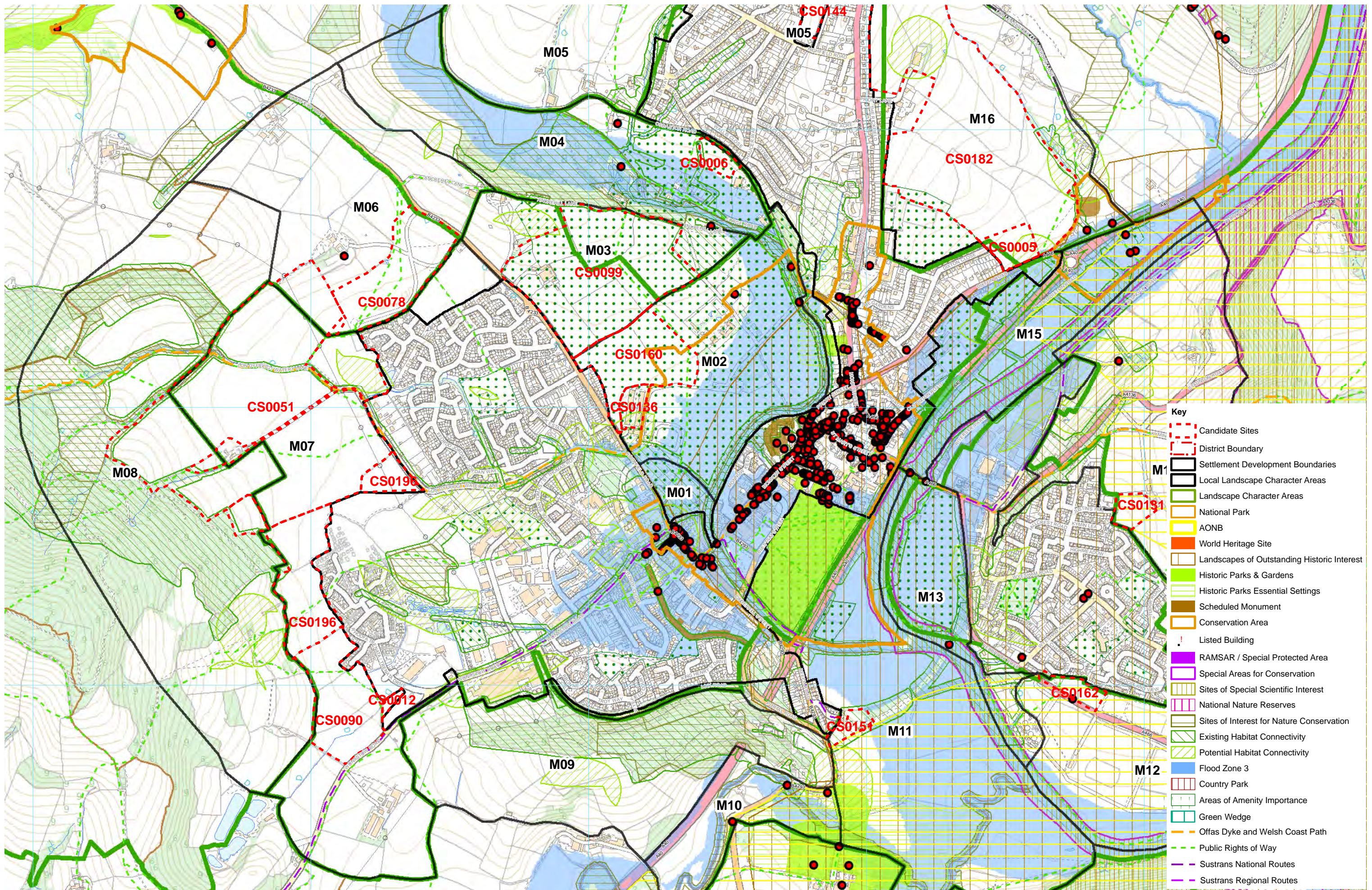
0 0.125 0.25 0.5 Kilometres



© Hawlfraint y Goron a hawliau cronfa ddata 2019 Arolwg Ordnans 100023415
 © Crown copyright and database rights 2019 Ordnance Survey 100023415
 www.whiteconsultants.co.uk

Project: Monmouthshire Landscape Sensitivity Study
 Client: Monmouthshire County Council
 Date: November 2019
 Status: Final

Settlement: Monmouth West Site Constraints



- Key**
- Candidate Sites
 - District Boundary
 - Settlement Development Boundaries
 - Local Landscape Character Areas
 - Landscape Character Areas
 - National Park
 - AONB
 - World Heritage Site
 - Landscapes of Outstanding Historic Interest
 - Historic Parks & Gardens
 - Historic Parks Essential Settings
 - Scheduled Monument
 - Conservation Area
 - ! Listed Building
 - RAMSAR / Special Protected Area
 - Special Areas for Conservation
 - Sites of Special Scientific Interest
 - National Nature Reserves
 - Sites of Interest for Nature Conservation
 - Existing Habitat Connectivity
 - Potential Habitat Connectivity
 - Flood Zone 3
 - Country Park
 - Areas of Amenity Importance
 - Green Wedge
 - Offas Dyke and Welsh Coast Path
 - Public Rights of Way
 - Sustrans National Routes
 - Sustrans Regional Routes

0 0.25 0.5 1 Kilometres



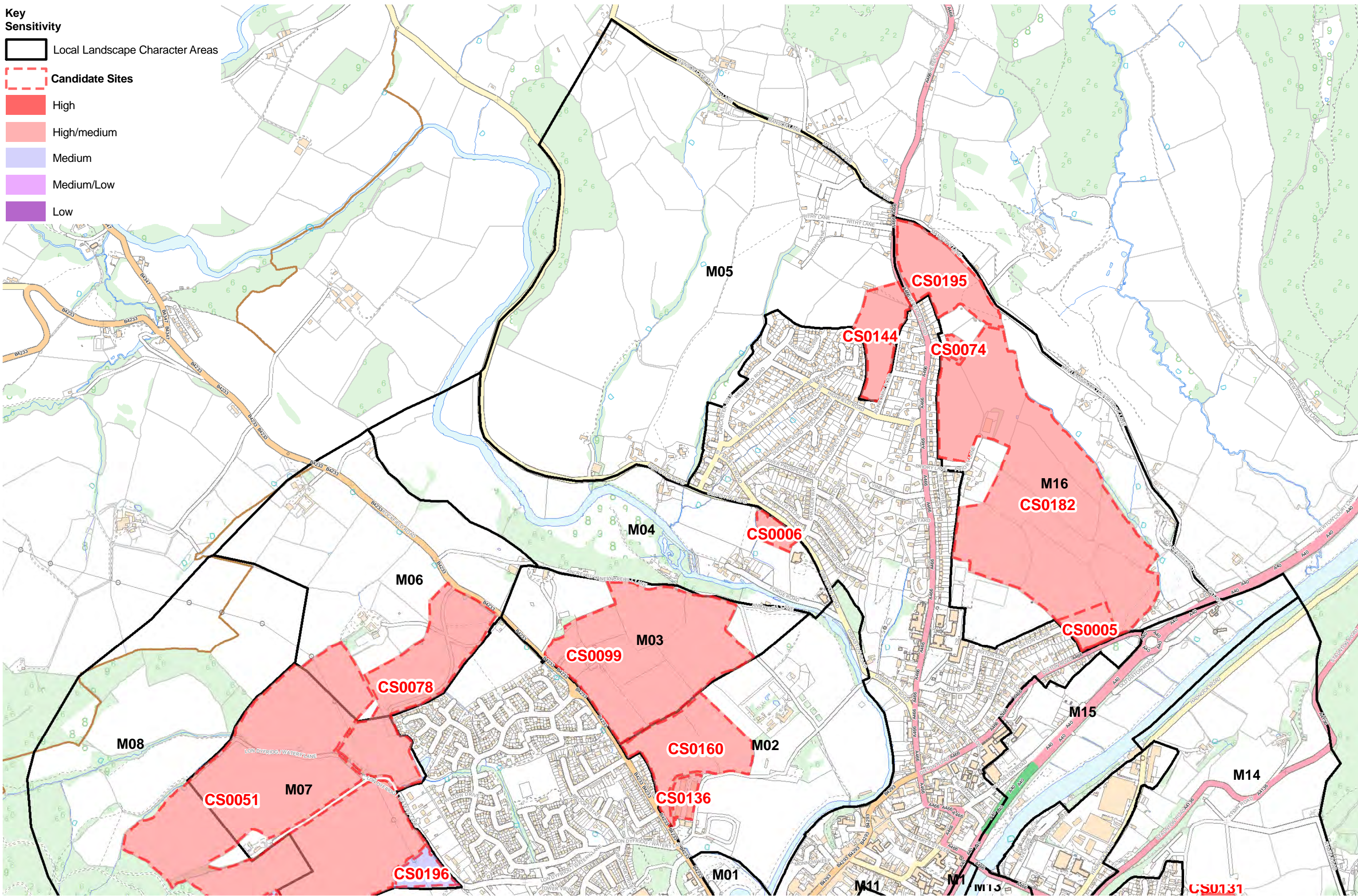
© Hawlfraint y Goron a hawliau cronfa ddata 2019 Arolwg Ordnans 100023415
 © Crown copyright and database rights 2019 Ordnance Survey 100023415
 www.whiteconsultants.co.uk

Project: Monmouthshire Landscape Sensitivity Study
 Client: Monmouthshire County Council
 Date: November 2019
 Status: Final

Settlement: Monmouth East Site Constraints

Key Sensitivity

- Local Landscape Character Areas
- Candidate Sites
- High
- High/medium
- Medium
- Medium/Low
- Low



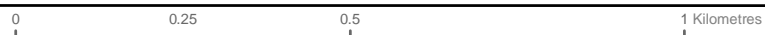
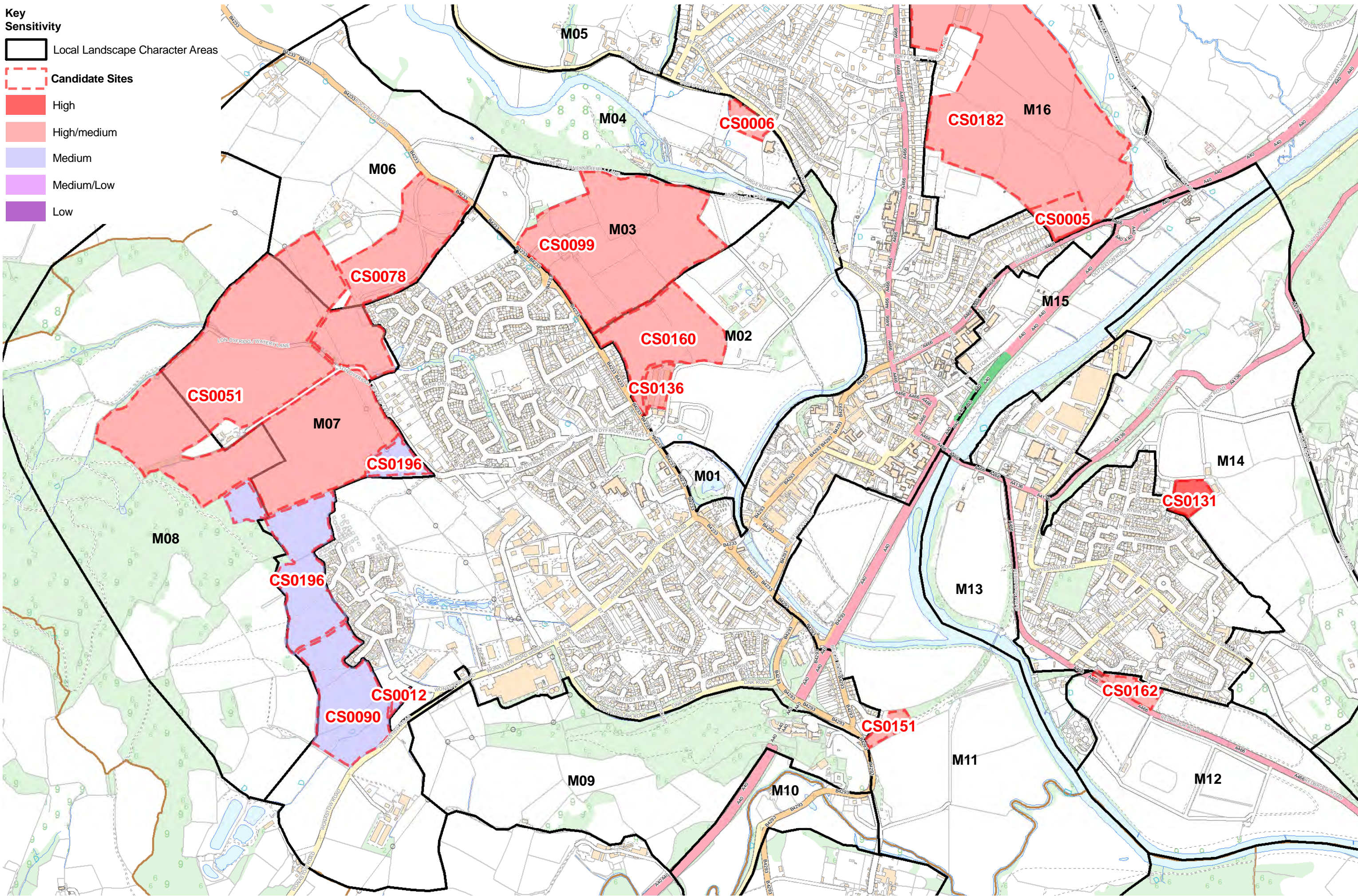
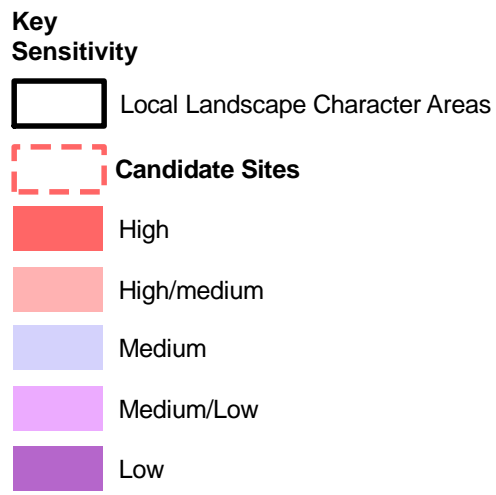
0 0.25 0.5 1 Kilometres



© Hawlfraint y Goron a hawliau cronfa ddata 2019 Arolwg Ordnans 100023415
 © Crown copyright and database rights 2019 Ordnance Survey 100023415
 www.whiteconsultants.co.uk

Project: Monmouthshire Landscape Sensitivity Study
 Client: Monmouthshire County Council
 Date: November 2019
 Status: Final

Monmouth North Landscape Sensitivity of Candidate Sites



SUMMARY

Key characteristics

Lower slopes of long sloping hill/valley sides on the east side of Monmouth.
Part of irregular large pastoral field with low-cut hedgerows and fences and no trees bounded by dwellings and their gardens to the west.
The area is visible on the eastern approaches to the town and from the Wye Valley AONB to the south.
The A40[T] and adjacent road decrease the tranquillity of the area.
To the east is Dixon Conservation Area with a SM and listed buildings and the Lower Wye Valley Area of Outstanding Historic Interest lies adjacent.

Landscape sensitivity high/medium* *A standard methodology relating to housing development has been applied to all assessments. The suitability for other development such as employment has not been assessed at this stage.

The susceptibility of the site lies in its character as an open rural hill/valley side on the east side of the settlement visible from the Wye Valley AONB and the A40[T], its lack of boundary to the north to help integrate development, and its role separating Monmouth from the historic settlement at Dixon north of the A466. The value of the area lies in the nearby Dixon Conservation Area with a SM and listed buildings, and the Lower Wye Valley Area of Outstanding Historic Interest. LANDMAP value is outstanding for historic landscape and cultural landscapes and high for visual and sensory. Whilst this is the least widely visible part of the eastern edges of the settlement at the bottom of the valley slopes, it is still apparent to a large number of receptors and the reduction in separation between Monmouth and Dixon is also a limiting landscape factor.

Does the site or its attributes contribute to the Wellbeing and Future Generations Act Goals?

- a prosperous Wales
- a resilient Wales
- a healthy Wales
- a more equal Wales
- a Wales of cohesive communities
- a Wales of vibrant culture and thriving Welsh language

LLCA CONTEXT

LLCA number M16
LLCA sensitivity High/medium
Relationship of site with LLCA Southern edge of M16

LANDMAP CONTEXT

Geological landscapes

| | | |
|---------------|------------|------------|
| Number | MNMTHGL024 | MNMTHGL025 |
| Value | Moderate | Moderate |

Landscape habitats

| | |
|---------------|------------|
| Number | MNMTHLH080 |
| Value | Low |

Visual and sensory

| | |
|---------------|------------|
| Number | MNMTHVS032 |
| Value | High |

Historical landscapes

| | |
|---------------|-------------|
| Number | MNMTHHL048 |
| Value | Outstanding |

Cultural landscapes

Number MNMTHCL026

Value Outstanding

Landscape Character Area

Number M16 **also includes**

DESIGNATIONS

National Park AONB

Landscape designations comments

-

Landscape of Hist. interest **Historic Parks and Gardens**

Hist.Parks and Gardens essential setting

SAM **Conservation Area** **Listed Building** **World Heritage Site**

Historic / archaeology designations comments Conservation Area, listed buildings and SM [castle mound] at Dixton; Lower Wye Valley Area of Outstanding Historic Interest to the south

SAC **NNR** **SINC** **SSSI** **RAMSAR**

Biodiversity designations comments -

Other

Country Park **National Trail** **National / Regional Cycle Route**

SUMMARY

Key characteristics

Steep valley side above floodplain.

Sloping part of pasture with mix of trimmed and outgrown hedges with trees to the east and west and open to the floodplain to the south.

The site is part of a green valley corridor focused on the sinuous River Monnow along which there is some rural settlement and a historic weir.

The area around appears to be well used locally the dog walking.

The suburban character settlement edge is prominent to the north and a school lies to the east.

Landscape sensitivity high/medium* *A standard methodology relating to housing development has been applied to all assessments. The suitability for other development such as employment has not been assessed at this stage.

The susceptibility of the site lies in its steep slopes, its role as part of a coherent rural valley corridor bounded by Osbaston Road to the north with rural settlement and school use only, an enclosed pastoral character with hedges contributing to habitat connectivity, open edge to the south/floodplain with public footpaths to the south and west. Its value lies in its location within the Area of Amenity Importance. Its LANDMAP value is outstanding for historic landscape, cultural landscape, and high for visual & sensory and landscape habitats. As such the site is considered sensitive to housing development.

Does the site or its attributes contribute to the Wellbeing and Future Generations Act Goals?

- a prosperous Wales a resilient Wales a healthy Wales a more equal Wales
 a Wales of cohesive communities a Wales of vibrant culture and thriving Welsh language

LLCA CONTEXT

LLCA number M04

LLCA sensitivity High/medium

Relationship of site with LLCA Part of the steep valley sides on the northern edge of M04.

LANDMAP CONTEXT

Geological landscapes

| | | |
|---------------|------------|------------|
| Number | MNMTHGL007 | MNMTHGL025 |
| Value | Moderate | Moderate |

Landscape habitats

| | | |
|---------------|------------|------------|
| Number | MNMTHLH096 | MNMTHLH080 |
| Value | High | Low |

Visual and sensory

| | |
|---------------|------------|
| Number | MNMTHVS022 |
| Value | High |

Historical landscapes

| | |
|---------------|-------------|
| Number | MNMTHHL048 |
| Value | Outstanding |

Cultural landscapes

| | |
|---------------|------------|
| Number | MNMTHCL026 |
|---------------|------------|

Value Outstanding

Landscape Character Area

Number M04 **also includes**

DESIGNATIONS

National Park AONB

Landscape designations comments

Area of Amenity Importance

Landscape of Hist. interest **Historic Parks and Gardens**

Hist.Parks and Gardens essential setting

SAM **Conservation Area** **Listed Building** **World Heritage Site**

Historic / archaeology designations comments

SAC **NNR** **SINC** **SSSI** **RAMSAR**

Biodiversity designations comments

Other

Country Park **National Trail** **National / Regional Cycle Route**

SUMMARY

Key characteristics

Very gently sloping small linear but irregular apparently unimproved pasture bounded by low hedges and new/permitted development on three sides and an outgrown hedge to the west.
National cycle route runs to the south along a lane with adjacent houses.

Landscape sensitivity medium

The susceptibility of the field lies in its distinctive character and shape and unimproved grassland character along with its hedges. Its value lies in its visibility to the national cycle route to the south. LANDMAP value is outstanding for historic landscape and high for visual and sensory and cultural landscapes. The site has some potential for housing if developed for housing around it although there may be more merit in it forming part of an open space network within a wider housing development. If land to the west is not developed then the existing hedge should be retained on the western boundary.

Does the site or its attributes contribute to the Wellbeing and Future Generations Act Goals?

- a prosperous Wales a resilient Wales a healthy Wales a more equal Wales
 a Wales of cohesive communities a Wales of vibrant culture and thriving Welsh language

LLCA CONTEXT

LLCA number M07
LLCA sensitivity Medium
Relationship of site with LLCA Lies to the southern part of M07.

LANDMAP CONTEXT

Geological landscapes
Number MNMTHGL023
Value Moderate

Landscape habitats
Number MNMTHLH130
Value Moderate

Visual and sensory
Number MNMTHVS049
Value High

Historical landscapes
Number MNMTHHL048
Value Outstanding

Cultural landscapes
Number MNMTHCL029
Value High

Landscape Character Area
Number M07 **also includes**

DESIGNATIONS

National Park

AONB

Landscape designations comments

-

Landscape of Hist. interest

Historic Parks and Gardens

Hist.Parks and Gardens essential setting

SAM

Conservation Area

Listed Building

World Heritage Site

**Historic / archaeology
designations comments**

-

SAC

NNR

SINC

SSSI

RAMSAR

**Biodiversity designations
comments**

-

Other

Country Park

National Trail

National / Regional Cycle Route

SUMMARY

Key characteristics

Very gently sloping land rising on the western margins with a steeply rising hill to the west. Medium-large arable fields and pastures/meadows bounded by a mix of low cut and outgrown hedges with mature oak trees. There are a few farm complexes and rural dwellings isolated from the settlement edge. The settlement edge itself is a mix of linear and indented edges. Offa's Dyke footpath crosses the area along with a number of other footpaths.

Landscape sensitivity high/medium

The susceptibility of the area lies in its role as the lower slopes of the rural backcloth to Monmouth to the east, its openness, its use for recreation in terms of Offa's Dyke with associated views and other footpaths linking the settlement to the countryside, its fine oak trees and hedges, its habitat connectivity to the woodland and its productive arable land use. Its value lies in Offa's Dyke footpath and PROWs and the scenic quality of views to and from the adjacent hills including Kings Wood. LANDMAP value is outstanding for historic landscape and high for visual and sensory and cultural landscape. This site is the most sensitive part of the western edges of the settlement with its open fields especially to the north, intervisibility with Offa's Dyke including views from Water Lane, and the well defined slopes to the west complementing Kings Wood.

Does the site or its attributes contribute to the Wellbeing and Future Generations Act Goals?

- a prosperous Wales
- a resilient Wales
- a healthy Wales
- a more equal Wales
- a Wales of cohesive communities
- a Wales of vibrant culture and thriving Welsh language

LLCA CONTEXT

| | | | |
|---------------------------------------|--|-------------|-------------|
| ILCA number | M07 | M06 | M06 |
| ILCA sensitivity | Medium | High/medium | High/medium |
| Relationship of site with ILCA | Area covering the northern part of M07 and the eastern part of M08 | | |

LANDMAP CONTEXT

Geological landscapes

| | | |
|---------------|------------|------------|
| Number | MNMTHGL023 | MNMTHGL016 |
| Value | Moderate | High |

Landscape habitats

| | |
|---------------|------------|
| Number | MNMTHLH118 |
| Value | Low |

Visual and sensory

| | | |
|---------------|------------|------------|
| Number | MNMTHVS049 | MNMTHVS030 |
| Value | High | High |

Historical landscapes

| | | |
|---------------|-------------|------------|
| Number | MNMTHHL048 | MNMTHHL071 |
| Value | Outstanding | High |

Cultural landscapes

Number MNMTHCL029

Value Outstanding

Landscape Character Area

Number M07 **also includes** M06 M06

DESIGNATIONS

National Park AONB

Landscape designations comments

-

Landscape of Hist. interest **Historic Parks and Gardens**

Hist. Parks and Gardens essential setting

SAM **Conservation Area** **Listed Building** **World Heritage Site**

Historic / archaeology designations comments -

SAC **NNR** **SINC** **Yes** **SSSI** **RAMSAR**

Biodiversity designations comments -

Other

Country Park **National Trail** **Yes** **National / Regional Cycle Route**

SUMMARY

Key characteristics

Part of long sloping hill/valley sides on the east side of Monmouth running down to the Wye valley floor. Irregular small pasture with low-cut and outgrown hedgerows and limited trees separated from built edge by large pub garden. Pub adjacent within 20c ribbon development of houses on the western boundary ridge top form a prominent skyline visible on the eastern approaches to the town and from the Wyse Valley AONB to the south. Views across to the site and pub from PROWs on minor ridge to the west.

Landscape sensitivity high/medium

The susceptibility of the site lies in its character as part of a long open rural hill/valley side on the east side of the settlement visible from the Wye Valley AONB, its character extending out in a cluster from the adjacent linear settlement form, its separation from the settlement edge by a large pub garden, and its visibility from PROWs to the east and also from the north. The value of the area lies in PROWs adjacent to the area. LANDMAP value is outstanding for historic landscape and cultural landscapes and high for visual and sensory. The site is sensitive as development here would potentially be out of character with both the openness of the hillside and the adjacent settlement edge linear character.

Does the site or its attributes contribute to the Wellbeing and Future Generations Act Goals?

- a prosperous Wales
- a resilient Wales
- a healthy Wales
- a more equal Wales
- a Wales of cohesive communities
- a Wales of vibrant culture and thriving Welsh language

LLCA CONTEXT

IICA number M16
IICA sensitivity High/medium
Relationship of site with IICA small part of the western edge of M16

LANDMAP CONTEXT

Geological landscapes
Number MNMTHGL025
Value Moderate

Landscape habitats
Number MNMTHLH081
Value Moderate

Visual and sensory
Number MNMTHVS032
Value High

Historical landscapes
Number MNMTHHL048
Value Outstanding

Cultural landscapes
Number MNMTHCL026

Value Outstanding

Landscape Character Area

Number M16 **also includes**

DESIGNATIONS

National Park AONB

Landscape designations comments

-

Landscape of Hist. interest **Historic Parks and Gardens**

Hist.Parks and Gardens essential setting

SAM **Conservation Area** **Listed Building** **World Heritage Site**

Historic / archaeology designations comments -

SAC **NNR** **SINC** **SSSI** **RAMSAR**

Biodiversity designations comments -

Other

Country Park **National Trail** **National / Regional Cycle Route**

SUMMARY

Key characteristics

Southern and eastern slopes of distinctive lowland hill at Croft y Bwla.
 Medium to large irregular rationalised arable and pasture fields with mix of low cut, outgrown and degraded hedges. Remnant field trees and a few along hedgerows.
 Whilst generally open the area is enclosed in part by rising land to the north towards Croft y Bwla.
 Croft y Bwla and the recent settlement edge to the south overlooks the area.
 The western edge of the site lies adjacent to Offa's Dyke .

Landscape sensitivity high/medium

The susceptibility of the area is its openness and character as open countryside extending north of the settlement, its location on the slopes of a distinctive low hill with a listed farmhouse on the brow, the lack of any existing hedgerows or trees to integrate the northern edge of the site, the remaining field trees, the overlooking of the area by Offa's Dyke, and the PROWs through the area. The value of the area lies in the listed building at Croft-y-Bwla to the north, Offa's Dyke to the west and the PROWs crossing the area. LANDMAP value is outstanding for historic landscape and high for visual and sensory and cultural landscape. The current and permitted development edge remains at a lower level screened by hedges and away from Offa's Dyke as it leaves the settlement edge. This site would significantly extend development form up slopes and to the north west which is undesirable. The only potential opportunity for well designed housing development would be the south west field at a low level , directly west of existing housing, provided substantial tree screening and landscape buffers between it and the National Trail and to the north are put in place to minimise effects and act as a long term edge to the settlement. However if access was required from from Rockfield Road this would be highly undesirable in landscape and visual terms and in the future this would also tend to facilitate development of this area.

Does the site or its attributes contribute to the Wellbeing and Future Generations Act Goals?

- a prosperous Wales
 a resilient Wales
 a healthy Wales
 a more equal Wales
 a Wales of cohesive communities
 a Wales of vibrant culture and thriving Welsh language

LLCA CONTEXT

| | | |
|---------------------------------------|--|-------------|
| ILCA number | M06 | M07 |
| ILCA sensitivity | Medium | High/medium |
| Relationship of site with ILCA | Southern edge of M06 and north-eastern part of M07 | |

LANDMAP CONTEXT

Geological landscapes

| | | |
|---------------|------------|------------|
| Number | MNMTHGL016 | MNMTHGL023 |
| Value | High | Moderate |

Landscape habitats

| | |
|---------------|------------|
| Number | MNMTHLH118 |
| Value | Low |

Visual and sensory

| | | |
|---------------|------------|------------|
| Number | MNMTHVS030 | MNMTHVS049 |
| Value | High | High |

Historical landscapes

Number MNMTHHL048 MNMTHHL024
Value Outstanding Moderate

Cultural landscapes

Number MNMTHCL029
Value High

Landscape Character Area

Number M06 **also includes** M07

DESIGNATIONS

National Park AONB

Landscape designations comments

-

Landscape of Hist. interest **Historic Parks and Gardens**

Hist.Parks and Gardens essential setting

SAM **Conservation Area** **Listed Building** **World Heritage Site**

Historic / archaeology designations comments listed building at Croft-y-Bwla to the north

SAC **NNR** **SINC** **SSSI** **RAMSAR**

Biodiversity designations comments -

Other

Country Park **National Trail** Yes **National / Regional Cycle Route**

SUMMARY

Key characteristics

Very gently sloping land rising on the western margins with a steeply rising hill beyond to the west. Four small-medium pasture and arable fields respectively bounded by mainly low cut and hedges with a few mature oak trees. There are a few farm complexes and rural dwellings beyond isolated from the settlement edge. The settlement edge itself is indented new housing development with commercial uses apparent. A public footpath crosses the area linking the settlement with wider landscape. National cycle route runs along the lane to the south.

Landscape sensitivity medium

The susceptibility of the area lies in its role as the lower slopes of the rural backcloth to Monmouth to the east, its openness, its use for recreation in terms of the footpath linking the settlement to the countryside, its few fine oak trees and hedges and its productive arable land use. Its value lies in the PROW, and the scenic quality of views to and from the adjacent hills including Kings Wood. LANDMAP value is outstanding for historic landscape and high for visual and sensory and cultural landscapes. The site has some potential for housing but if developed should include tree planting in retained hedges on its southern and western boundaries to mitigate the effects of development and integrate into the wider landscape. The rear of properties should not meet these hedge boundaries and properties should face the lane and national cycle route to the south.

Does the site or its attributes contribute to the Wellbeing and Future Generations Act Goals?

- a prosperous Wales
- a resilient Wales
- a healthy Wales
- a more equal Wales
- a Wales of cohesive communities
- a Wales of vibrant culture and thriving Welsh language

LLCA CONTEXT

IICA number M07
IICA sensitivity Medium
Relationship of site with IICA Lies to the southern part of M07.

LANDMAP CONTEXT

Geological landscapes

| | | |
|---------------|------------|------------|
| Number | MNMTHGL016 | MNMTHGL023 |
| Value | High | Moderate |

Landscape habitats

| | | |
|---------------|------------|------------|
| Number | MNMTHLH130 | MNMTHLH118 |
| Value | Moderate | Low |

Visual and sensory

| | |
|---------------|------------|
| Number | MNMTHVS049 |
| Value | High |

Historical landscapes

| | |
|---------------|-------------|
| Number | MNMTHHL048 |
| Value | Outstanding |

Cultural landscapes

Number MNMTHCL029

Value High

Landscape Character Area

Number M07 **also includes**

DESIGNATIONS

National Park AONB

Landscape designations comments

-

Landscape of Hist. interest **Historic Parks and Gardens**

Hist.Parks and Gardens essential setting

SAM **Conservation Area** **Listed Building** **World Heritage Site**

Historic / archaeology designations comments -

SAC **NNR** **SINC** **SSSI** **RAMSAR**

Biodiversity designations comments -

Other

Country Park **National Trail** **National / Regional Cycle Route**

SUMMARY

Key characteristics

River Monnow lower valley sides and minor ridge rising to the north west.
Medium to large scale pasture with wire and low hedge boundaries with farm complex.
Tree cover is limited with some field trees and clumps, around buildings and along some field boundaries.
The area forms part of a strong green corridor along the River Monnow penetrating into town.
The north eastern edge forms the local skyline and is also visible as a skyline at the top of a steep wooded slope from the other side of the Monnow valley.
The area is overlooked at a distance by buildings and spaces in the town centre and filtered views to the town and the church are possible from footpaths crossing the area.
The settlement to the west of the area forms a linear edge of limited merit.

Landscape sensitivity high/medium

The susceptibility of the site lies in its open rural character, its role as part of the River Monnow green corridor running into the town core, forming a positive approach from the north and use for walking along a PROW. Parts of the area are visible from the town core as forming part of the rural setting. The local skyline to the north east is particularly susceptible as it is visible from both sides. The rising hillsides to the north are also very susceptible to development due to their prominence. The value of the area lies in the listed building to the north, the PROW crossing the area, and the Area of amenity importance covering the area. LANDMAP value is outstanding for historic landscape and high for visual and sensory, landscape habitats, geological landscape and cultural landscape.

The area is sensitive as it forms part of the River Monnow green corridor running into the town core, forming a positive approach from the north and is used for walking along PROWs. Parts of the area are visible from the town core as forming part of the rural setting and the area to the west provides a pleasant rural approach to the settlement from the north. The local skyline to the north east is particularly sensitive as it is visible from both sides.

Does the site or its attributes contribute to the Wellbeing and Future Generations Act Goals?

- a prosperous Wales
- a resilient Wales
- a healthy Wales
- a more equal Wales
- a Wales of cohesive communities
- a Wales of vibrant culture and thriving Welsh language

LLCA CONTEXT

LLCA number M03
LLCA sensitivity High/medium

Relationship of site with LLCA

LANDMAP CONTEXT

Geological landscapes

| | | |
|---------------|------------|------------|
| Number | MNMTHGL016 | MNMTHGL023 |
| Value | High | Moderate |

Landscape habitats

| | |
|---------------|------------|
| Number | MNMTHLH096 |
| Value | High |

Visual and sensory

| | | |
|---------------|------------|------------|
| Number | MNMTHVS049 | MNMTHVS022 |
| Value | High | High |

Historical landscapes

Number MNMTHHL048

Value Outstanding

Cultural landscapes

Number MNMTHCL029

Value High

Landscape Character Area

Number M03 **also includes**

DESIGNATIONS

National Park AONB

Landscape designations comments

In Area of amenity importance

Landscape of Hist. interest **Historic Parks and Gardens**

Hist.Parks and Gardens essential setting

SAM **Conservation Area** **Listed Building** **World Heritage Site**

Historic / archaeology designations comments listed Salts Lodge to the north east

SAC **NNR** **SINC** **SSSI** **RAMSAR**

Biodiversity designations comments River Monnow and woodland SINC adjacent to the north east

Other

Country Park **National Trail** **National / Regional Cycle Route**

SUMMARY

Key characteristics

Sloping hill/valley side running down from The Kymin.
Medium scale arable/grass field with low cut hedges extending out from settlement edge.
Recently constructed dark green clad rural barns lie at eastern corner.
The overall area is framed by woodlands on the upper slopes and forms a prominent and important part of the hill backcloth to the town and the Wye.
The area is in the Wye Valley AONB and the Lower Wye Valley Area of Outstanding Historic Interest.
Offa's Dyke Path runs through the area to the north and overlooks the site.

Landscape sensitivity high

The susceptibility of the site lies in its character as part of an open, largely unspoilt, prominent slope forming the eastern backcloth to the settlement and the River Wye, complementing the wooded upper slopes. The value lies in its location substantially within the AONB, in the Lower Wye Valley Area of Outstanding Historic Interest and Offa's Dyke Path running to the north and overlooking it. LANDMAP value is outstanding for visual and sensory and cultural landscapes and high for historic landscapes. Any development here would significantly extend housing up the slopes and could potentially appear out of character with the current settlement edge and its relationship with the AONB.

Does the site or its attributes contribute to the Wellbeing and Future Generations Act Goals?

- a prosperous Wales
- a resilient Wales
- a healthy Wales
- a more equal Wales
- a Wales of cohesive communities
- a Wales of vibrant culture and thriving Welsh language

LLCA CONTEXT

IICA number M14
IICA sensitivity High
Relationship of site with IICA Field on lower slopes of M14 adjacent to settlement.

LANDMAP CONTEXT

Geological landscapes

| | | |
|---------------|------------|------------|
| Number | MNMTHGL029 | MNMTHGL028 |
| Value | Moderate | Moderate |

Landscape habitats

| | | |
|---------------|------------|------------|
| Number | MNMTHLH092 | MNMTHLH134 |
| Value | Moderate | Low |

Visual and sensory

| | | |
|---------------|-------------|------------|
| Number | MNMTHVS084 | MNMTHVS071 |
| Value | Outstanding | Low |

Historical landscapes

| | |
|---------------|------------|
| Number | MNMTHHL018 |
| Value | High |

Cultural landscapes

| | | |
|---------------|------------|------------|
| Number | MNMTHCL027 | MNMTHCL026 |
|---------------|------------|------------|

SUMMARY

Key characteristics

Part of the River Monnow valley floor outside floodplain.

Former poultry sheds with trees to the west and outgrown hedgerows to the north and east and Co-op store to the south.

Expansion of the settlement to the west of the area forms a linear edge of limited merit, but well defined by Rockfield Road.

Almost all land west of Rockfield Road contributes to a major green corridor into the corner of the town to the south east.

Landscape sensitivity high/medium* *A standard methodology relating to housing development has been applied to all assessments. The suitability for other development such as employment has not been assessed at this stage.

The susceptibility of the site lies in its role as part of the River Monnow green corridor penetrating close to the town core, forming part of the settlement's setting to the north. The existing buildings are out of character with the surrounding fields and rural green space but substituting these with housing would reinforce the adverse effect on the character of the green corridor east of Rockfield Road. The value of the area lies in its location adjacent to the Town Conservation Area. LANDMAP value is outstanding for cultural landscape and high for visual and sensory.

Does the site or its attributes contribute to the Wellbeing and Future Generations Act Goals?

- a prosperous Wales a resilient Wales a healthy Wales a more equal Wales
 a Wales of cohesive communities a Wales of vibrant culture and thriving Welsh language

LLCA CONTEXT

LLCA number M02

LLCA sensitivity High/medium

Relationship of site with LLCA Part of valley floor adjacent to settlement edge to west in M02

LANDMAP CONTEXT

Geological landscapes

Number MNMTHGL023

Value Moderate

Landscape habitats

Number MNMTHLH080 MNMTHLH096

Value Low Low

Visual and sensory

Number MNMTHVS049 MNMTHVS070

Value High High

Historical landscapes

Number MNMTHHL024

Value Moderate

Cultural landscapes

Number MNMTHCL026 MNMTHCL029

Value Outstanding Outstanding

Landscape Character Area

Number M02 **also includes**

DESIGNATIONS

National Park AONB

Landscape designations comments

In Area of amenity importance

Landscape of Hist. interest **Historic Parks and Gardens**

Hist.Parks and Gardens essential setting

SAM **Conservation Area** **Listed Building** **World Heritage Site**

Historic / archaeology designations comments Adjacent to Conservation Area

SAC **NNR** **SINC** **SSSI** **RAMSAR**

Biodiversity designations comments -

Other

Country Park **National Trail** **National / Regional Cycle Route**

SUMMARY

Key characteristics

Prominent sloping hill/valley side of tributary watercourse running to the River Monnow to the west, with steep slope to the south.

Irregular medium-sized pasture field with generally low cut hedges to the north and surrounded by settlement on three sides to the south with a distinctive level change between housing to the east and west.

A couple of trees along hedgerows to the north west.

Farm buildings and the semi-rural settlement of Manson lie to the north

The area acts as the green open setting of the settlement to the north.

There is a listed building at The Maze to the north.

Landscape sensitivity high/medium

The susceptibility of the area lies in its character as a prominent open rural hillside of positive character which indents and breaks up the settlement form on its northern edge, is visible as skyline from the A466 to the north, its steep east west slopes, and the contribution the field makes to separation between housing in Monmouth and the semi-rural settlement at Manson. The lack of field boundary to the north would mean development would be exposed to the north at least in the short term. The value of the area lies in the landscape setting of the listed 'The Maze' just to the north. LANDMAP value is high for visual and sensory and cultural landscape. Overall, development of the site is not desirable in landscape and visual terms.

Does the site or its attributes contribute to the Wellbeing and Future Generations Act Goals?

- a prosperous Wales
- a resilient Wales
- a healthy Wales
- a more equal Wales
- a Wales of cohesive communities
- a Wales of vibrant culture and thriving Welsh language

LLCA CONTEXT

ILCA number M05

ILCA sensitivity High/medium

Relationship of site with ILCA Field on eastern edge of M05 adjacent to settlement.

LANDMAP CONTEXT

Geological landscapes

Number MNMTHGL025

Value Moderate

Landscape habitats

Number MNMTHLH081 MNMTHLH080

Value Moderate Low

Visual and sensory

Number MNMTHVS032 MNMTHVS070

Value High High

Historical landscapes

Number MNMTHHL048 MNMTHHL024

Value Moderate Outstanding

Cultural landscapes

Number MNMTHCL029

Value High

Landscape Character Area

Number M05 **also includes**

DESIGNATIONS

National Park AONB

Landscape designations comments

-

Landscape of Hist. interest Historic Parks and Gardens

Hist.Parks and Gardens essential setting

SAM Conservation Area Listed Building World Heritage Site

Historic / archaeology designations comments Listed building at The Maze to the north.

SAC NNR SINC SSSI RAMSAR

Biodiversity designations comments -

Other

Country Park National Trail National / Regional Cycle Route

SUMMARY

Key characteristics

Slightly raised dismantled railway corridor crossing the valley floor of the Rivers Wye, and Monnow. Dismantled railway embankment within site is rough ground with some small structures and trees mainly to the south and east. The viaduct and railway bridge to the east form strong distinctive features and focal points. Recent estate housing separated from main settlement by the A40[T] impinges on the dismantled railway embankment adjacent to the site to the east. The tranquillity of the area is reduced by the presence of the A40[T] which overlooks the area from the north west. The southern edge of the site abuts the Wye Valley AONB and the site is within the Landscape of Outstanding Historic Interest.

Landscape sensitivity high/medium

The susceptibility of the site lies in its slightly raised character protruding into the distinctive flat valley floor of the Rivers Wye, Monnow, and Trothy reducing the separation between Monmouth and Wyesham, and detracting from the treed character of the dismantled railway which breaks up the valley floodplain. Also there is likely to be visibility from the AONB slopes and from public rights of way including the Wye Valley Walk to the east. The value of the site lies in its designations including Wye Valley AONB to the south and the Landscape of Outstanding Historic Interest. LANDMAP value is outstanding for cultural landscape and high for visual & sensory and geological landscape.

Does the site or its attributes contribute to the Wellbeing and Future Generations Act Goals?

- a prosperous Wales
- a resilient Wales
- a healthy Wales
- a more equal Wales
- a Wales of cohesive communities
- a Wales of vibrant culture and thriving Welsh language

LLCA CONTEXT

IICA number M11

IICA sensitivity High

Relationship of site with IICA

LANDMAP CONTEXT

Geological landscapes

Number MNMTHGL022

Value High

Landscape habitats

Number MNMTHLH080 MNMTHLH093

Value Low High

Visual and sensory

Number MNMTHVS090

Value High

Historical landscapes

Number MNMTHHL024

Value Moderate

Cultural landscapes

Number MNMTHCL026

Value Outstanding

Landscape Character Area

Number M11 **also includes**

DESIGNATIONS

National Park AONB

Landscape designations comments

Wye Valley AONB to the south of dismantled railway

Landscape of Hist. interest Yes **Historic Parks and Gardens**

Hist.Parks and Gardens essential setting

SAM **Conservation Area** **Listed Building** **World Heritage Site**

Historic / archaeology designations comments Lower Wye Valley Landscape of Outstanding Historic Interest; Railway Bridge listed to the north east

SAC **NNR** **SINC** **SSSI** **RAMSAR**

Biodiversity designations comments -

Other

Country Park **National Trail** **National / Regional Cycle Route**

SUMMARY

Key characteristics

River Monnow valley floor.
 Medium to large scale pasture and grass areas with wire and low hedge boundaries.
 Tree cover is limited with some hedgerow trees trees.
 The site forms part of a strong green corridor along the River Monnow penetrating into town.
 The area is overlooked by buildings and spaces in the town centre and filtered views to the town and the church are possible from footpaths crossing/adjacent to the area.
 The expansion of the settlement to the west of the area forms a linear edge of limited merit, but well defined by Rockfield Road with associated linear development.
 An area to the south of the site is within the Conservation Area.

Landscape sensitivity high/medium

The susceptibility of the site lies in its role as part of the River Monnow green corridor penetrating close to the town core, forming part of the settlement's setting to the north and is used for walking and informal recreation in parts. The value of the area lies in its location within or close to the Town Conservation Area, the Area of amenity importance covering the area and the PROWs running through the area. LANDMAP value is outstanding for historic landscape and cultural landscape and high for visual and sensory and landscape habitats. Housing here would erode the green corridor and potentially adversely affect the landscape setting of the town to the north.

Does the site or its attributes contribute to the Wellbeing and Future Generations Act Goals?

- a prosperous Wales
 a resilient Wales
 a healthy Wales
 a more equal Wales
 a Wales of cohesive communities
 a Wales of vibrant culture and thriving Welsh language

LLCA CONTEXT

IICA number M02
IICA sensitivity High/medium
Relationship of site with IICA North western edge of M02.

LANDMAP CONTEXT

Geological landscapes

| | | |
|---------------|------------|------------|
| Number | MNMTHGL023 | MNMTHGL007 |
| Value | Moderate | Moderate |

Landscape habitats

| | |
|---------------|------------|
| Number | MNMTHLH096 |
| Value | High |

Visual and sensory

| | | |
|---------------|------------|------------|
| Number | MNMTHVS049 | MNMTHVS070 |
| Value | High | High |

Historical landscapes

| | |
|---------------|-------------|
| Number | MNMTHHL048 |
| Value | Outstanding |

Cultural landscapes

| | | |
|---------------|-------------|-------------|
| Number | MNMTHCL029 | MNMTHCL026 |
| Value | Outstanding | Outstanding |

Landscape Character Area

| | | |
|---------------|-----|----------------------|
| Number | M02 | also includes |
|---------------|-----|----------------------|

DESIGNATIONS

| | |
|----------------------|-------------|
| National Park | AONB |
|----------------------|-------------|

Landscape designations comments
in Area of amenity importance

| | |
|------------------------------------|-----------------------------------|
| Landscape of Hist. interest | Historic Parks and Gardens |
|------------------------------------|-----------------------------------|

Hist.Parks and Gardens essential setting

| | | | | |
|------------|--------------------------|------------|------------------------|----------------------------|
| SAM | Conservation Area | Yes | Listed Building | World Heritage Site |
|------------|--------------------------|------------|------------------------|----------------------------|

| | |
|---|---|
| Historic / archaeology designations comments | - |
|---|---|

| | | | | |
|------------|------------|-------------|-------------|---------------|
| SAC | NNR | SINC | SSSI | RAMSAR |
|------------|------------|-------------|-------------|---------------|

| | |
|---|---|
| Biodiversity designations comments | - |
|---|---|

Other

| | | |
|---------------------|-----------------------|--|
| Country Park | National Trail | National / Regional Cycle Route |
|---------------------|-----------------------|--|

SUMMARY

Key characteristics

Lower valley sides of the Wye valley.
Medium rectilinear grass field and rough land bounded by fences and low-cut gappy hedgerows to the south.
The site is open in itself but enclosed and overlooked by the wooded valley sides.
The A466 runs adjacent reducing the area's tranquillity.
Housing estates at Wyesham border the site to the north forming a prominent and detractive edge, and skyline in part.
The area is within the Wye Valley AONB and the Lower Wye Valley Area of Outstanding Historic Interest.

Landscape sensitivity high/medium

The susceptibility of the site is that it forms part of a strong open green corridor along the Wye valley as a key approach to the settlement and the adjacent housing, whilst detractive, is located away from the A466 is partly mitigated by garden vegetation. The site is highly visible from adjacent valley sides and from the A466 road approach to the settlement. The value of the site lies in its location in the Wye Valley AONB and within the Lower Wye Valley Area of Outstanding Historic Interest. LANDMAP value is outstanding for historic landscapes and cultural landscapes and high for visual and sensory and landscape habitats. There is potential that development on the site would act as a precedent for housing extending south east into open land along the A466 reducing the green setting to the river corridor.

Does the site or its attributes contribute to the Wellbeing and Future Generations Act Goals?

- a prosperous Wales
- a resilient Wales
- a healthy Wales
- a more equal Wales
- a Wales of cohesive communities
- a Wales of vibrant culture and thriving Welsh language

LLCA CONTEXT

LLCA number M12
LLCA sensitivity High/medium
Relationship of site with LLCA Rough ground and pasture field on the north western edge of M12.

LANDMAP CONTEXT

Geological landscapes

Number MNMTHGL028
Value Moderate

Landscape habitats

| | | |
|---------------|------------|------------|
| Number | MNMTHLH093 | MNMTHLH134 |
| Value | High | Low |

Visual and sensory

| | | |
|---------------|------------|------------|
| Number | MNMTHVS090 | MNMTHVS071 |
| Value | High | Low |

Historical landscapes

| | | |
|---------------|------------|------------|
| Number | MNMTHHL018 | MNMTHHL024 |
| Value | High | Moderate |

Cultural landscapes

Number MNMTHCL026

Value Outstanding

Landscape Character Area

Number M12 **also includes**

DESIGNATIONS

National Park AONB Yes

Landscape designations comments

In Wye Valley AONB

Landscape of Hist. interest Yes **Historic Parks and Gardens**

Hist. Parks and Gardens essential setting

SAM **Conservation Area** **Listed Building** **World Heritage Site**

Historic / archaeology designations comments In Lower Wye Valley Landscape of Outstanding Historic Interest

SAC **NNR** **SINC** **SSSI** **RAMSAR**

Biodiversity designations comments -

Other

Country Park **National Trail** **National / Regional Cycle Route**

SUMMARY

Key characteristics

Long sloping hill/valley sides on the east side of Monmouth running down to the Wye valley floor with minor watercourse as eastern boundary.

Irregular medium sized fields with mixed farming and low-cut hedgerows and tree cover limited to the stream course and around dwellings and their gardens.

The settlement within the area is focused on the rural cluster of Priory farmhouse on the hillside.

20c ribbon development of houses on the western boundary ridge top form a prominent skyline.

The area is highly visible on the eastern approaches to the town and from the Wye Valley AONB to the south.

The A40[T] which decreases the tranquillity of the area to the south but the area increases in tranquillity to the north and east.

Directly adjacent to the south east is Dixton in a Conservation Area with a SM and listed buildings and is in the Lower Wye Valley Area of Outstanding Historic Interest.

Landscape sensitivity high/medium

The susceptibility of the area lies in its character as a long open rural hill/valley side on the east side of the settlement visible from the Wye Valley AONB and the A40[T] with only rural settlement at the locally prominent farm complex at Priory Farm, its role separating Monmouth from the historic settlement at Dixton and the habitat connectivity along the stream corridor to the south. The existing development on the skyline to the east illustrates the potential for wide visibility of any new development on the slopes in the area from the south and east, including the Wye Valley AONB. This is highly undesirable. The value of the area lies in adjacent Dixton Conservation Area with a SM and listed buildings, the Lower Wye Valley Area of Outstanding Historic Interest, PROWs within and adjacent to the area to the east and the Area of amenity importance to the east. LANDMAP value is outstanding for historic landscape and cultural landscapes and high for visual and sensory. The above factors mean that the site is sensitive to housing development.

Does the site or its attributes contribute to the Wellbeing and Future Generations Act Goals?

- a prosperous Wales
- a resilient Wales
- a healthy Wales
- a more equal Wales
- a Wales of cohesive communities
- a Wales of vibrant culture and thriving Welsh language

LLCA CONTEXT

LLCA number M16

LLCA sensitivity High/medium

Relationship of site with LLCA Majority of western part of M16 falling to the south east

LANDMAP CONTEXT

Geological landscapes

Number MNMTHGL025

Value Moderate

Landscape habitats

Number MNMTHLH124

Value Moderate

Visual and sensory

Number MNMTHVS032

Value High

Historical landscapes

Number MNMTHHL048

Value Outstanding

Cultural landscapes

Number MNMTHCL026

Value Outstanding

Landscape Character Area

Number M16 **also includes**

DESIGNATIONS

National Park AONB

Landscape designations comments

Area of amenity importance - playing fields to the south west

Landscape of Hist. interest **Historic Parks and Gardens**

Hist.Parks and Gardens essential setting

SAM **Conservation Area** **Listed Building** **World Heritage Site**

Historic / archaeology designations comments Conservation Area, listed buildings and SM [castle mound] at Dixton; Lower Wye Valley Area of Outstanding Historic Interest to the south

SAC **NNR** **SINC** **SSSI** **RAMSAR**

Biodiversity designations comments -

Other

Country Park **National Trail** **National / Regional Cycle Route**

SUMMARY

Key characteristics

Northern part of valley sides on the east side of Monmouth forming a crowned area above the A466 running down to a tributary of the Wye valley, Mally Brook, to the east.

Irregular large pasture field with mainly low-cut hedgerows and tree cover limited to the lower part of the site to the south east and one or two trees along the A466 frontage.

20c ribbon development of houses on the edge of Monmouth and rural settlement lies to the north-west (Manson) and east, and a golf course also lies beyond in the valley to the east.

The area is highly visible on the northern approaches to the town along the A466, forming the skyline.

PROWs cross the site from east to west.

The Maze listed building lies to the west.

Landscape sensitivity high/medium

The susceptibility of the area lies in its character as an unspoilt rural pastoral skyline on the north east side of the settlement visible from the A466 and PROWs within the area, and its role separating Monmouth from Manson to the north. The value of the area lies in PROWs within and adjacent to the area. LANDMAP value is outstanding for cultural landscapes and high for visual and sensory. Development on this site would significantly extend the settlement rolling over into rural landscape to the north and so is unlikely to be appropriate.

Does the site or its attributes contribute to the Wellbeing and Future Generations Act Goals?

- a prosperous Wales
- a resilient Wales
- a healthy Wales
- a more equal Wales
- a Wales of cohesive communities
- a Wales of vibrant culture and thriving Welsh language

LLCA CONTEXT

ILCA number M16

ILCA sensitivity High/medium

Relationship of site with ILCA Northern part of M16 falling to the east

LANDMAP CONTEXT

Geological landscapes

Number MNMTHGL025

Value Moderate

Landscape habitats

Number MNMTHLH081

Value Moderate

Visual and sensory

Number MNMTHVS032

Value High

Historical landscapes

Number MNMTHHL048

Value Outstanding

Cultural landscapes

| | | |
|---------------|------------|-------------|
| Number | MNMTHCL029 | MNMTHCL026 |
| Value | High | Outstanding |

Landscape Character Area

| | | |
|---------------|-----|----------------------|
| Number | M16 | also includes |
|---------------|-----|----------------------|

DESIGNATIONS

| | |
|----------------------|-------------|
| National Park | AONB |
|----------------------|-------------|

Landscape designations comments

-

| | |
|------------------------------------|-----------------------------------|
| Landscape of Hist. interest | Historic Parks and Gardens |
|------------------------------------|-----------------------------------|

Hist.Parks and Gardens essential setting

| | | | |
|------------|--------------------------|------------------------|----------------------------|
| SAM | Conservation Area | Listed Building | World Heritage Site |
|------------|--------------------------|------------------------|----------------------------|

| | |
|---|--------------------------------------|
| Historic / archaeology designations comments | The Maze listed building to the west |
|---|--------------------------------------|

| | | | | |
|------------|------------|-------------|-------------|---------------|
| SAC | NNR | SINC | SSSI | RAMSAR |
|------------|------------|-------------|-------------|---------------|

| | |
|---|---|
| Biodiversity designations comments | - |
|---|---|

Other

| | | |
|---------------------|-----------------------|--|
| Country Park | National Trail | National / Regional Cycle Route |
|---------------------|-----------------------|--|

SUMMARY

Key characteristics

Very gently sloping land to the east rising on the western margins with a steeply rising hill beyond. Irregular arable fields bounded by a mix of low cut and outgrown hedges with mature oak trees to the north. The settlement edge itself is a mix of linear detached dwellings in large gardens on the edge of settlement in Watery Lane to the east and indented new development further west. Offa's Dyke national trail runs along Watery Lane.

Landscape sensitivity medium

The susceptibility of the site lies in its role as the lower slopes of the rural backcloth to Monmouth to the east, especially to the north west, its openness to the north, its use for recreation in terms of Offa's Dyke with associated views to the east and visibility from other footpaths linking the settlement to the countryside, its fine oak trees and hedges, its location adjacent to the woodland and its productive arable land use. Its value lies in Offa's Dyke footpath and PROWs, and the scenic quality of views to and from the adjacent hills including Kings Wood. LANDMAP value is outstanding for historic landscape and high for visual and sensory and cultural landscape. The least sensitive part of the area lies in the fields directly west of the recent development, extending no further west than the boundary with M08. There may be an opportunity in the triangular field adjacent to the southern extent of Watery Lane bounded by a strong hedgerow to the north. The most sensitive part of the area lies in the rising field to the north west, with its associated trees and hedgerows as this impinges most clearly on the perception of the woodland backcloth.

Does the site or its attributes contribute to the Wellbeing and Future Generations Act Goals?

- a prosperous Wales
- a resilient Wales
- a healthy Wales
- a more equal Wales
- a Wales of cohesive communities
- a Wales of vibrant culture and thriving Welsh language

LLCA CONTEXT

| | | |
|---------------------------------------|---|------|
| IICA number | M07 | M08 |
| IICA sensitivity | Medium | High |
| Relationship of site with IICA | Irregular shaped site in the middle of the M07 running from the hillside to the west to the edge of the settlement to the east. | |

LANDMAP CONTEXT

Geological landscapes

| | |
|---------------|------------|
| Number | MNMTHGL023 |
| Value | Moderate |

Landscape habitats

| | | |
|---------------|------------|------------|
| Number | MNMTHLH118 | MNMTHLH130 |
| Value | Low | Moderate |

Visual and sensory

| | | |
|---------------|------------|------------|
| Number | MNMTHVS049 | MNMTHVS030 |
| Value | High | High |

Historical landscapes

| | |
|---------------|-------------|
| Number | MNMTHHL048 |
| Value | Outstanding |

Cultural landscapes

Number MNMTHCL029

Value High

Landscape Character Area

Number M07 **also includes** M08

DESIGNATIONS

National Park AONB

Landscape designations comments

-

Landscape of Hist. interest **Historic Parks and Gardens**

Hist.Parks and Gardens essential setting

SAM **Conservation Area** **Listed Building** **World Heritage Site**

Historic / archaeology designations comments -

SAC **NNR** **SINC** **SSSI** **RAMSAR**

Biodiversity designations comments -

Other

Country Park **National Trail** **National / Regional Cycle Route**