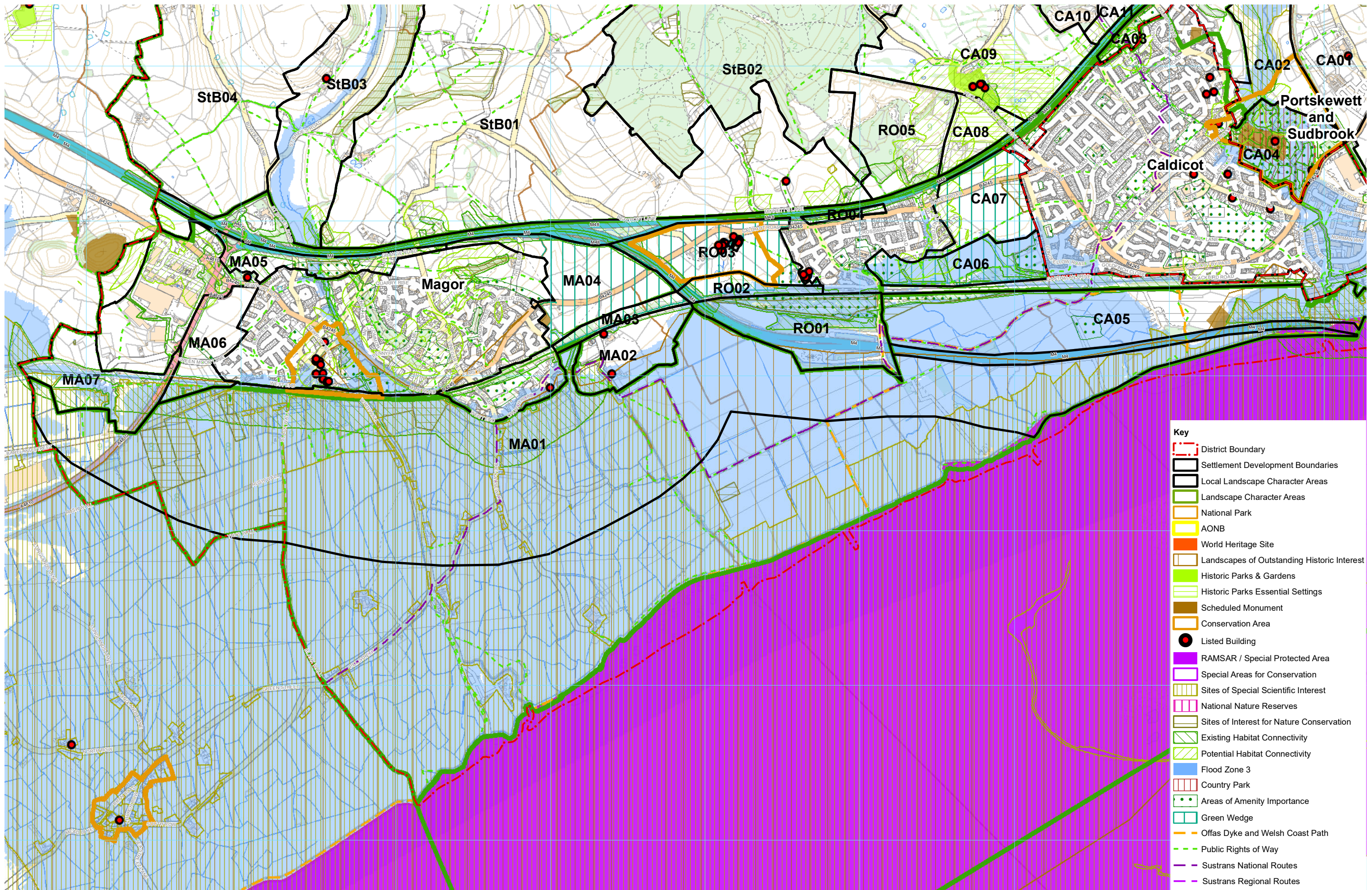
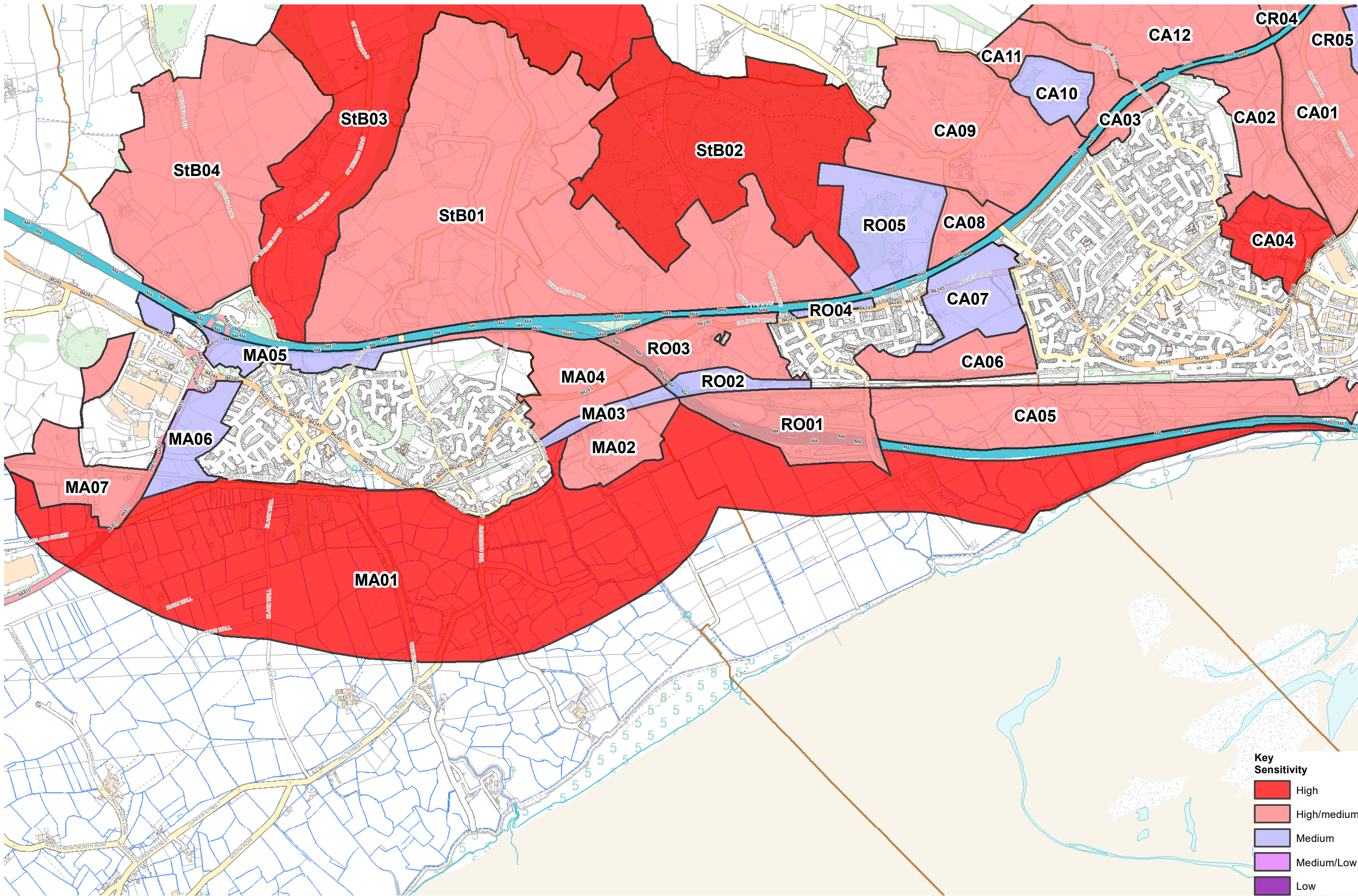


Magor LLCAs



- Key**
- District Boundary
 - Settlement Development Boundaries
 - Local Landscape Character Areas
 - Landscape Character Areas
 - National Park
 - AONB
 - World Heritage Site
 - Landscapes of Outstanding Historic Interest
 - Historic Parks & Gardens
 - Historic Parks Essential Settings
 - Scheduled Monument
 - Conservation Area
 - Listed Building
 - RAMSAR / Special Protected Area
 - Special Areas for Conservation
 - Sites of Special Scientific Interest
 - National Nature Reserves
 - Sites of Interest for Nature Conservation
 - Existing Habitat Connectivity
 - Potential Habitat Connectivity
 - Flood Zone 3
 - Country Park
 - Areas of Amenity Importance
 - Green Wedge
 - Offas Dyke and Welsh Coast Path
 - Public Rights of Way
 - Sustrans National Routes
 - Sustrans Regional Routes



0 0.25 0.5 1 Kilometres



© Hawlfraint y Goron a hawliau cronfa ddata 2019 Arolwg Ordnans 100023415
 © Crown copyright and database rights 2019 Ordnance Survey 100023415
 www.whiteconsultants.co.uk

Project: Monmouthshire Landscape Sensitivity Study
 Client: Monmouthshire County Council
 Date: November 2019
 Status: Final

SUMMARY**Key characteristics**

Part of the Gwent Levels in primarily pastoral use with some arable.

Small to medium scale irregular fields to west and around Whitewall Common and Undy Common and large rectilinear fields to the east.

Trees lie on reens, along lanes and around settlement but are less to the east.

Small linear rural settlements such as Whitewall Common and Undy Common are the main settlement within the area with sparse scattered rural farmsteads elsewhere.

The tranquillity of the area increases with distance from the M4 and railway but is also affected by the pylons/power lines.

The area forms part of the levels landscape which continues to the east and west and has a defined relationship with larger settlements which occur on rising land and with the Severn Estuary to the south. Gwent Levels and Magor Marsh SSSIs covers the majority of the area, excluding settlement and an area to the east around Caldicot Moor.

All the area lies in the Gwent Level Area of Outstanding Historic Interest and in an SLA.

Landscape and visual sensitivity to housing High

The susceptibility of the area lies in its distinctive open, flat and wet lowland character forming part of the Gwent Levels, with a distinct rectilinear pattern of reens and field boundaries with associated wetland trees such as pollarded willows and wet grazing, its habitat connectivity, location in floodplain, discontinuous linear settlement and occasional farmsteads on slightly higher ground, with footpaths and a regional cycle route. The value of the area lies in its designation as Gwent Levels SSSI and Landscape of Outstanding Historic Interest, tranquillity, PROWs and a national cycle route. LANDMAP value is high for visual and sensory, and mostly outstanding for historic landscape, landscape habitats, and cultural landscape.

Does the area or its attributes contribute to the Wellbeing and Future Generations Act Goals ?

- a prosperous Wales a resilient Wales a more equal Wales a globally responsible Wales
 a Wales of cohesive communities a Wales of vibrant culture and thriving Welsh Language a healthier Wales

VALUE

Landmap Context	Aspect area value	Aspect area value
Geological Landscapes	Moderate	Landscape Habitats Outstanding
Historical Landscapes	5% moderate, 95% outstanding	Cultural Landscapes Outstanding
Visual and Sensory	High	

Designations

Landscape designations comments -

National Park AONB

Historic/archaeology designations comments all in Gwent Levels Landscape of Outstanding Historic Interest; relic seawall SMs

Historic Parks and Gardens Hist. Parks and Gardens Setting Listed Building

Landscape of Hist. Interest Yes Scheduled Monument Yes Conservation Area Yes WHS

Biodiversity designations comments Gwent Levels and Magor Marsh SSSIs covers the majority of the area, excluding settlement and an area to the east around Caldicot Moor; SINC's at Barecroft Common, Bridewell Common field, Blackwall Lane field,

SAC NNR SINC Yes SSSI Yes RAMSAR Yes

Recreation Factors

Country Park National Trail National/Regional Cycle Route Yes

LANDSCAPE CHARACTER AND SUSCEPTIBILITY

Landscape Character Area

LCA Name Caldicot Levels LCA Number 2 also part of

Characteristics

Landform levels

Landcover primarily pasture with some arable

Pattern

Settlement pattern small linear rural settlements such as Whitewall Common and Undy Common and sparse scattered rural farmsteads

Woodland cover trees lie on reens, including pollards, along lanes and around settlement but are less to the east

Boundaries small to medium scale irregular fields to west and around Whitewall and Undy Common and large rectilinear fields to the east

 Presence of water reens

Diversity simple Scale large

Sense of enclosure open generally but trees enclose in places

Function of AreaPastoral Arable Horticulture Recreation other

Comments primarily pasture with some arable

Functional relationship and connectivity

...with wider landscape significant ...with settlement some

...with adjacent assessed area? some Corridor? Existing Habitat Connectivity Habitat Connectivity Opportunity

the area appears to be managed as part of a number of wider land holdings and has PROWs linking into the settlements to the north; with continuous habitat connectivity south of railway

Are adjacent assessed areas mutually reliant... ...visually? ...functionally

Comments -

PERCEPTUAL SUSCEPTIBILITY**Skyline**

Prominence/importance not applicable Complexity simple

Comments -

Key viewsTo settlement settlement visible on higher ground to the northFrom settlement views from settlement over lower area towards the Severn Estuary

Landmarks -

Detractors pylons/power lines that cross the area, railway electrification infrastructure

IntervisibilitySite observation medium ...to key features ...from key places

Comments the area is intervisible with hills to the north and with the M4, mainline railway and settlements

Tranquillity

Noise sources roads other

Views of development some Presence of people occasional

Summary medium

Comments the tranquillity of the area increases with distance from the M4 and railway but is also affected by the pylons/power lines

Settlement edge

Pre C20th edge C20-21st edge Nature of edge neutral Form of edge moderately indented

Comments the settlement at Undy is mixed and low lying although with some local detractors

Visual relationship and connectivity

...with settlement some ...with wider landscape significant ...with adjacent assessed area some

Setting

Comments the area forms part of the Levels landscape which continues to the east and west and has a defined relationship with larger settlements which occur on rising land and with the Severn Estuary to the south

Receptors

roads/rail/cycleways

rural residents

urban residents

long distance/public footpaths

Sensitivity

medium

medium

high/medium

high

Comments the main receptors are users of the M4, local residents both within the area such as at Whitewall Common and along the edge of Undy and users of PROWs.

OTHER

Other factors -

Potential Improvements (if no development)

improve and replant hedgerows, manage mature trees especially pollards, maintain reens

Mitigation (if development) -

SUMMARY**Key characteristics**

Gentle slopes on the edge of the levels of mainly pastoral with some arable farmland.

Small-medium scale irregular fields with a mix of outgrown and low cut hedges.

Tree cover around settlement and a few field boundaries, but generally open.

Scattered rural dwellings and farmsteads.

The area visually relates to the levels landscape which continues to the east and west.

The area is overlooked by the M4, mainline railway and settlement and has reduced tranquillity due to their proximity.

The southern edge is in the Gwent Level Area of Outstanding Historic Interest and there are listed buildings at Great House Farm and Moorgate Cottage.

The Gwent Levels SSSI covers the south west corner.

Landscape and visual sensitivity to housing High/Medium

The susceptibility of the area lies in the continuity of open rural landscape with the levels to the south, separated from the settlement to the west, its general openness and transition between the higher ground and the Levels, with a distinctive character features such as reens, with footpaths and a cycle route. Its value lies in its designation for historic and cultural interest including two SMs, the Gwent Level Area of Outstanding Historic Interest with listed buildings at Great House Farm and Moorgate Cottage, and the national cycle route. LANDMAP value is outstanding for landscape habitats and mostly for cultural landscape and mostly high for visual and sensory and historic landscape.

Does the area or its attributes contribute to the Wellbeing and Future Generations Act Goals ?

- a prosperous Wales a resilient Wales a more equal Wales a globally responsible Wales
 a Wales of cohesive communities a Wales of vibrant culture and thriving Welsh Language a healthier Wales

VALUE

Landmap Context	Aspect area value	Aspect area value
Geological Landscapes	75% low, 25% moderate	Landscape Habitats Outstanding
Historical Landscapes	High	Cultural Landscapes 80% outstanding, 20% low
Visual and Sensory	85% high, 15% low	

Designations

Landscape designations comments -

National Park AONB

Historic/archaeology designations comments southern edge in Gwent Level Area of Outstanding Historic Interest; listed buildings at Great House Farm and Moorgate Cottage

Historic Parks and Gardens	Hist. Parks and Gardens Setting	Listed Building	Yes
Landscape of Hist. Interest	Yes	Scheduled Monument	Conservation Area
Biodiversity designations comments	Gwent Levels SSSI covers south west corner		
SAC	NNR	SINC	SSSI Yes RAMSAR

Recreation Factors

Country Park National Trail National/Regional Cycle Route Yes

LANDSCAPE CHARACTER AND SUSCEPTIBILITY**Landscape Character Area**

LCA Name Severnside LCA Number 3 also part of 0 0

Characteristics

Landform gentle slopes on the edge of the levels

Landcover pastoral with some arable

Pattern

Settlement pattern scattered rural dwellings and farmsteads
 Woodland cover tree cover around settlement and a few field boundaries
 Boundaries small-medium scale irregular fields with a mix of outgrown and low cut hedges, a few larger trees

Presence of water one drain/reen, flood zone in south

Diversity simple Scale small-medium

Sense of enclosure moderately open

Function of Area

Pastoral Arable Horticulture Recreation other

Comments pastoral with some arable

Functional relationship and connectivity

...with wider landscape some ...with settlement some

...with adjacent assessed area? some Corridor?

Existing Habitat Connectivity Habitat Connectivity Opportunity

the area appears to be managed as part of a wider land holding and has a PROW linking into the settlement and also a regional cycle route; the south west part of the area is within a habitat connectivity corridor

Are adjacent assessed areas mutually reliant... ... visually? ...functionally

Comments -

PERCEPTUAL SUSCEPTIBILITY

Skyline

Prominence/importance apparent Complexity simple

Comments locally the area forms the skyline when viewed from lower land to the west

Key views

To settlement main settlement is visible to the west

From settlement the area is visible from the settlement edge

Landmarks -

Detractors three wireless masts, railway electrification

Intervisibility

Site observation medium ...to key features ...from key places

Comments the area is intervisible with hills to the north and the levels and with the M4, mainline railway and settlements

Tranquillity

Noise sources roads other

Views of development one side 180 Presence of people infrequent

Summary medium

Comments the area is essentially rural but its tranquillity is reduced by the M4, railway and views of pylons and the settlement

Settlement edge

Pre C20th edge C20-21st edge Nature of edge Form of edge

Comments n/a as does not abut area

Visual relationship and connectivity

...with settlement some ...with wider landscape some ...with adjacent assessed area some

Setting

Comments the area visually relates to the levels landscape which continues to the east and west

Receptors

roads/rail/cycleways

rural residents

urban residents

long distance/public footpaths

Sensitivity

medium

medium

high/medium

high

Comments the main receptors are users of the M4, local residents both within the area and along the edge of Undy and users of the PROW.

OTHER

Other factors -

Potential Improvements (if no development)

improve and replant hedgerows, manage mature trees especially pollards, maintain reens; a disturbed site adjacent to the railway should be reinstated as a hedged grass field with smooth contours in character with the surrounding Levels landscape

Mitigation (if development) -

SUMMARY

Key characteristics

Flat area of aggregate hardstanding, scrub, regenerating birch, willow and rough grass.
Apparently disused sidings used for trail biking.
Creates screen to and from M4 and mainline railway.
Continuity of green corridor along railway.
Part of Green Wedge.

Landscape and visual sensitivity to housing Medium

The susceptibility of the area lies in it being part of a green corridor, visually linking into the levels and separating Undy from Rogiet as part of the Green Wedge, and forming a green belt along the railway with informal recreational use. LANDMAP value is outstanding for landscape habitats and high for historic landscape.

Does the area or its attributes contribute to the Wellbeing and Future Generations Act Goals ?

- a prosperous Wales a resilient Wales a more equal Wales a globally responsible Wales
 a Wales of cohesive communities a Wales of vibrant culture and thriving Welsh Language a healthier Wales

VALUE

Landmap Context	Aspect area value	Aspect area value
Geological Landscapes	75% low, 25% moderate	Landscape Habitats Outstanding
Historical Landscapes	100% high	Cultural Landscapes Low
Visual and Sensory	Moderate	

Designations

Landscape designations comments	Within Green Wedge.		
National Park	AONB		
Historic/archaeology designations comments	-		
Historic Parks and Gardens	Hist. Parks and Gardens Setting	Listed Building	
Landscape of Hist. Interest	Scheduled Monument	Conservation Area	WHS
Biodiversity designations comments	-		
SAC	NNR	SINC	SSSI RAMSAR

Recreation Factors

Country Park National Trail National/Regional Cycle Route

LANDSCAPE CHARACTER AND SUSCEPTIBILITY

Landscape Character Area

LCA Name Severnside LCA Number 3 also part of 0 0

Characteristics

Landform flat
Landcover aggregate, scrub, birch/willow regeneration and grass

Pattern

Settlement pattern nonenone
Woodland cover scrub willow and birch regeneration
Boundaries outgrown hedge to north
 Presence of water -
Diversity simple Scale small
Sense of enclosure generally enclosed

Function of Area

Pastoral Arable Horticulture Recreation other

Comments disused sidings informally used for trail biking

Functional relationship and connectivity

...with wider landscape none ...with settlement none

...with adjacent assessed area? none Corridor?

Existing Habitat Connectivity Habitat Connectivity Opportunity

the area appears disused with little functional connection with adjacent uses and no formal public access; there is a habitat connectivity corridor along the railway; there seems to be some informal use for trail biking

Are adjacent assessed areas mutually reliant... ... visually? ...functionally

Comments -

PERCEPTUAL SUSCEPTIBILITY

Skyline

Prominence/importance not applicable Complexity

Comments -

Key views

To settlement -

From settlement -

Landmarks -

Detractors adjacent M4 and railway electrification infrastructure

Intervisibility

Site observation medium ...to key features ...from key places

Comments intervisible with railway, M4, M48 and with gently rising land to north

Tranquillity

Noise sources roads other

Views of development some Presence of people frequent

Summary medium/low

Comments the character and location of the site by the M4 and mainline railway reduces tranquillity and also its apparent use for trail biking

Settlement edge

Pre C20th edge C20-21st edge Nature of edge neutral Form of edge moderately indented

Comments the settlement edge is indented by earthwork features and appears incremental

Visual relationship and connectivity

...with settlement limited ...with wider landscape some ...with adjacent assessed area some

Setting

Comments the area forms part of a green corridor of open land between Undy and Rogiet and linking the levels with higher land to the north

Receptors

roads/rail/cycleways

rural residents

urban residents

Sensitivity

medium

medium

high/medium

Comments receptors include users of the adjacent M4 and railway and nearby residents

OTHER

Other factors -

Potential Improvements (if no development) manage developing tree belt

Mitigation (if development) -

SUMMARY

Key characteristics

Gently undulating landform rising from relatively flat land in south east to north west where a new estate forms the skyline.

Medium to large scale improved pasture fields rationalised to the east with a mix of outgrown and low cut hedges.

Limited field and hedge trees meaning the area is generally open in character.

Key views are from the east on the M4 which also reduces the tranquillity of the area.

The new settlement edge of Undy appears to be a standard estate and is clearly visible from the east.

The area forms an important green gap function between Undy and settlements to the east and is designated as Green Wedge.

Allotments provide recreation and the potential for local food production.

There is SM moated site to the south west of the area.

Landscape and visual sensitivity to housing High/Medium

The susceptibility of the area lies in its role as a green wedge of open countryside between Undy and Rogiet, its openness generally, allotments, and visibility from the M4 in winter and the M4 embankment trees and their habitat connectivity. The value of the area lies in the Medieval moated site SM near Courtfield and standing stone near motorway, the PROW and community use of allotments. LANDMAP value is mostly high for historic landscape and partly high for geological landscape.

Does the area or its attributes contribute to the Wellbeing and Future Generations Act Goals ?

- a prosperous Wales a resilient Wales a more equal Wales a globally responsible Wales
 a Wales of cohesive communities a Wales of vibrant culture and thriving Welsh Language a healthier Wales

VALUE

Landmap Context	Aspect area value	Aspect area value
Geological Landscapes	45% high, 35% low, 20% moderate	Landscape Habitats Moderate
Historical Landscapes	70% high, 5% moderate, 25% low	Cultural Landscapes Low
Visual and Sensory	Moderate	
Designations		
Landscape designations comments	Green Wedge across majority of area	
National Park	AONB	
Historic/archaeology designations comments	Medieval moated site- SM, near Courtfield and standing stone near motorway	
Historic Parks and Gardens	Hist. Parks and Gardens Setting	Listed Building
Landscape of Hist. Interest	Scheduled Monument Yes	Conservation Area WHS
Biodiversity designations comments	-	
SAC	NNR	SINC
	SSSI	RAMSAR

Recreation Factors

Country Park National Trail National/Regional Cycle Route

LANDSCAPE CHARACTER AND SUSCEPTIBILITY

Landscape Character Area

LCA Name Severnside LCA Number 3 also part of

Characteristics

Landform gently undulating landform rising from relatively flat land in south east to north west

Landcover pasture, allotments

Pattern

Settlement pattern scattered rural settlement of farmsteads and dwellings

Woodland cover strong tree belt west of Rockfield Farm but otherwise scattered mature trees such as oaks in hedgerows and in fields

Boundaries medium to large scale fields rationalised to the east with low cut hedges; area is in two parts separated by B4245; area to west under development for housing with no evident boundary screen

Presence of water -

Diversity simple Scale medium

Sense of enclosure open

Function of Area

Pastoral Arable Horticulture Recreation other

Comments pasture

Functional relationship and connectivity

...with wider landscape some ...with settlement some

...with adjacent assessed area? some Corridor?

Existing Habitat Connectivity Habitat Connectivity Opportunity

the area may be managed as part of a larger land holding along with areas to the north and includes allotments and habitat corridor along M4

Are adjacent assessed areas mutually reliant... ...visually? ...functionally

Comments -

PERCEPTUAL SUSCEPTIBILITY

Skyline

Prominence/importance prominent Complexity simple

Comments western edge and new estate forms skyline when viewed from the east including from the M4

Key views

To settlement area forms main rural setting for settlement from M4

From settlement -

Landmarks -

Detractors M4

Intervisibility

Site observation high ...to key features ...from key places

Comments though relatively low in the landscape to the east the area rises to the west and has strong intervisibility with the M4; the new housing to the west now forms the edge of Undy

Tranquillity

Noise sources roads

Views of development one side 180 Presence of people frequent

Summary medium/low

Comments the area is generally dominated by the M4 in terms of noise and movement

Settlement edge

Pre C20th edge C20-21st edge Nature of edge neutral Form of edge smooth/linear

Comments the estate edge of Undy respects the moated site SM and is indented to the south but to the north is more open to view and poorly integrated into the landscape, with the new estate forming the skyline on higher ground.

Visual relationship and connectivity

...with settlement some ...with wider landscape some ...with adjacent assessed area some

Setting

Comments the area provides a setting for the expanded settlement of Undy and forms a new developed edge of Undy to views from the east along the M4

Receptors**Sensitivity**

rural residents

high

urban residents

high

roads/rail/cycleways

high/medium

long distance/public footpaths

high

Comments the area is overlooked by many travellers along the M4 and B4245, as well as by adjacent residents and users of the footpath.

OTHER

Other factors area contributes to the green gap between Undy and Rogiet, allotments contribute to local food production

Potential Improvements (if no development) more trees in hedgerows, management of green corridor to the south for habitat connectivity

Mitigation (if development) screening tree belt to new housing development to north west

SUMMARY

Key characteristics

Strip of land between the M4 and Magor and Undy.

Undulating landform falling from relatively flat hill top to east to a valley bottom with stream and rising again gently to the west.

Medium/small scale improved pasture fields and small-scale horse pasture mixer boundaries including outgrown hedges, low cut hedges and fences.

The area is generally enclosed by hedges and trees with some views in from the M4 and adjacent settlement. Settlement comprises of a few settlement edge dwellings but is bounded by the settlement to the south and interrupted by commercial development to the west and various roads.

Key views are from the M4 to the area.

Western part forms part of the wider setting of Wilcrick Hill.

The tranquillity of the area is low due to the adjacent M4 and settlement.

SINC in stream valley and pasture.

Area of amenity importance adjacent to the settlement.

Landscape and visual sensitivity to housing Medium

The susceptibility of the area lies in its role as a narrow green buffer/wedge between Magor and the M4 which provides a positive outlook from the road and the settlement, the stream corridor with associated riparian vegetation and unimproved pasture, the small scale pattern of tree and hedge cover which help screen surrounding development, the western part forming part of the wider setting of Wilcrick Hill and the related habitat connectivity the area provides to the north and south as well as east and west. The value of the area lies in the SINC in the stream valley and the area of amenity importance adjacent to the settlement. LANDMAP value is mostly high for historic landscape and, in part, for geological landscape.

There is potential for development in the area north of the allotments but avoiding effects on the skyline when viewed from the north, maintaining some green corridor along the western boundary with the A4810 and allowing pedestrian/cycle links between housing to the east and the brewery to the west.

Does the area or its attributes contribute to the Wellbeing and Future Generations Act Goals ?

- a prosperous Wales a resilient Wales a more equal Wales a globally responsible Wales
 a Wales of cohesive communities a Wales of vibrant culture and thriving Welsh Language a healthier Wales

VALUE

Landmap Context	Aspect area value	Aspect area value
Geological Landscapes	45% high, 35% low, 20% moderate	Landscape Habitats Moderate
Historical Landscapes	90% high, 10% moderate	Cultural Landscapes Low
Visual and Sensory	Moderate	
Designations		
Landscape designations comments	Green Wedge and Area of amenity importance- eastern part	
National Park	AONB	
Historic/archaeology designations comments	listed building to south west	
Historic Parks and Gardens	Hist. Parks and Gardens Setting	Listed Building
Landscape of Hist. Interest	Scheduled Monument	Conservation Area WHS
Biodiversity designations comments	SINC in stream valley and pasture	
SAC	NNR	SINC SSSI RAMSAR

Recreation Factors

Country Park National Trail National/Regional Cycle Route

LANDSCAPE CHARACTER AND SUSCEPTIBILITY

Landscape Character Area

LCA Name Severnside LCA Number 3 also part of

Characteristics

Landform undulating landform falling from relatively flat hill top to east to a valley bottom with stream and rising again gently to the west

Landcover pasture

Pattern

Settlement pattern cluster of small holdings/rural dwellings in strip between settlement and M4, interrupted by commercial development at the M4/A4810 junction

Woodland cover small groups of trees in places

Boundaries medium/small scale semi-regular improved pasture fields and small scale horse pasture with mix of boundaries including outgrown hedges, low cut hedges and fences.

 Presence of water stream running north south (Mill Reen)

Diversity simple Scale medium/small

Sense of enclosure moderately enclosed

Function of AreaPastoral Arable Horticulture Recreation other

Comments pasture, mainly for horses

Functional relationship and connectivity

...with wider landscape limited ...with settlement some

...with adjacent assessed area? some Corridor? Existing Habitat Connectivity Habitat Connectivity Opportunity

the area appears to be managed as a series of landholdings, has habitat connectivity around the stream corridor and along the motorway, and there are footpaths running through and across it linking into the settlement

Are adjacent assessed areas mutually reliant... ...visually? ...functionally

Comments -

PERCEPTUAL SUSCEPTIBILITY**Skyline**

Prominence/importance apparent Complexity complex

Comments skyline of hedgerow and trees to east visible from valley floor to west alongside housing to the south

Key viewsTo settlement glimpsed views of settlement from M4From settlement views from existing settlement edge

Landmarks -

Detractors M4 adjacent

IntervisibilitySite observation medium ...to key features ...from key places

Comments the area to the west has a range of medium to low intervisibility with the area overlooked by adjacent housing and the M4 in places

Tranquillity

Noise sources roads

Views of development one side 180 Presence of people frequent

Summary low

Comments the M4 on one side significantly reduces tranquillity with its noise and movement while the

settlement on the other side is visible and the area is broken up by other roads and development

Settlement edge

Pre C20th edge C20-21st edge Nature of edge neutral Form of edge smooth/linear

Comments the settlement edge is of limited merit but softened in parts with vegetation

Visual relationship and connectivity

...with settlement significant ...with wider landscape limited ...with adjacent assessed area some

Setting

Comments the area is overlooked by the northern edge of the settlement and separates it from the M4

Receptors

urban residents

rural residents

long distance/public footpaths

roads/rail/cycleways

Sensitivity

high/medium

high/medium

High

Medium

Comments the main receptors are the adjacent residents with users of footpaths and the M4

OTHER

Other factors forms a green buffer function between the settlement and the M4

Potential Improvements (if no development)

retain and reinforce hedgerows with trees to increase screening and enclosure of the area to optimise habitat connectivity and screen development and the M4; retain and manage unimproved pasture.

Mitigation (if development)

If area to the west is developed ensure that there is a substantial tree planting belt to the west and north west to act as a screen and full stop to development and minimise any impact on the setting of Wilcrick Hill. Also restrict building height to minimise effects on the wider landscape in views from the west.

SUMMARY

Key characteristics

Rounded hillside falling to the levels with predominantly pastoral land use.

Mix of semi-regular and strip fields with mainly outgrown hedges.

Forming a minor skyline when viewed from the north and south.

The area provides a positive green edge to the eastern side of the settlement and links visually into the levels to the south.

The area lies between the brewery and settlement with a road with commercial traffic running adjacent all of which reduce its tranquillity.

South of the railway line the area is adjacent to an SSSI, with historic landscape designations.

Area of amenity importance covers a strip of allotments.

Landscape and visual sensitivity to housing Medium

The susceptibility of the area lies in it providing a green buffer between the settlement and brewery with the sloping and slightly domed landform containing the settlement and forming a minor skyline when viewed from the north and south, its hedgerows and allotments and habitat connectivity along the road and linking to the Levels. Its value lies in its Area of Amenity Importance on allotments, proximity to the Gwent Levels SSSI and Landscape of Outstanding Historic Interest. LANDMAP value is high for visual and sensory and historic landscape and in part for geological landscape.

Does the area or its attributes contribute to the Wellbeing and Future Generations Act Goals ?

- a prosperous Wales a resilient Wales a more equal Wales a globally responsible Wales
 a Wales of cohesive communities a Wales of vibrant culture and thriving Welsh Language a healthier Wales

VALUE

Landmap Context	Aspect area value	Aspect area value
Geological Landscapes	40% high, 20% low, 40% moderate	Landscape Habitats 85% moderate, 15% outstanding
Historical Landscapes	95% high, 5% low	Cultural Landscapes 85% low, 15% outstanding
Visual and Sensory	High	

Designations

Landscape designations comments	Area of Amenity Importance on allotments		
National Park	AONB		
Historic/archaeology designations comments	-		
Historic Parks and Gardens	Hist. Parks and Gardens Setting	Listed Building	
Landscape of Hist. Interest	Yes	Scheduled Monument	Conservation Area
			WHS
Biodiversity designations comments	-		
SAC	NNR	SINC	SSSI Yes
			RAMSAR

Recreation Factors

Country Park	National Trail	National/Regional Cycle Route
--------------	----------------	-------------------------------

LANDSCAPE CHARACTER AND SUSCEPTIBILITY

Landscape Character Area

LCA Name	Severnside	LCA Number	3	also part of	0	0
----------	------------	------------	---	--------------	---	---

Characteristics

Landform rounded hillside falling to the levels

Landcover pasture with some arable

Pattern

Settlement pattern none

Woodland cover trees along roads, railway and in a few hedgerows

Boundaries mix of irregular and strip fields with mainly outgrown hedges

Presence of water small pond by railway

Diversity simple Scale small to medium

Sense of enclosure semi enclosed with mature vegetation and adjacent settlement

Function of Area

Pastoral Arable Horticulture Recreation other

Comments pasture with some arable, allotments

Functional relationship and connectivity

...with wider landscape some ...with settlement limited

...with adjacent assessed area? some Corridor?

Existing Habitat Connectivity Habitat Connectivity Opportunity

the area appears to be managed as part of a wider landholding but has no public access apart from access to allotments; there is habitat connectivity along the road and linking to the Levels.

Are adjacent assessed areas mutually reliant... ... visually? ...functionally

Comments -

PERCEPTUAL SUSCEPTIBILITY

Skyline

Prominence/importance apparent Complexity simple

Comments the area forms the skyline in local views from the north and south

Key views

To settlement -

From settlement the settlement edge and high points in the settlement perceive the rounded profile green corridor between housing and the brewery

Landmarks -

Detractors electrification infrastructure for railway, pylons to western edge

Intervisibility

Site observation medium ...to key features ...from key places

Comments intervisible with the levels and with other hills in the settlement

Tranquillity

Noise sources roads other

Views of development many 270 Presence of people infrequent

Summary medium

Comments the area lies between the brewery and settlement with a road with commercial traffic running adjacent, and the railway, all of which reduce its tranquillity

Settlement edge

Pre C20th edge C20-21st edge Nature of edge neutral Form of edge smooth/linear

Comments the linear settlement edge is screened by the landform and vegetation of the area

Visual relationship and connectivity

...with settlement some ...with wider landscape some ...with adjacent assessed area some

Setting

Comments the area provides a positive green edge to the eastern side of the settlement

Receptors

urban residents

Sensitivity

high/medium

roads/rail/cycleways

high/medium

Comments the area is overlooked by settlement residents and adjacent road users

OTHER

Other factors -

Potential Improvements (if no development) strengthen vegetation and conserve and enhance hedgerows

Mitigation (if development) new development should be constrained to north of allotments, hedgerows maintained and strengthened and new boundary screens planted

SUMMARY

Key characteristics

A gently rounded hillside falling to the levels of mainly pastoral with some arable land use.

Mix of small to medium irregular fields with mainly outgrown hedges.

Trees lie along roads, the railway and in a few hedgerows.

Discontinuous rural linear settlement at Llandevenny.

The area is separated from the settlement but forms part of the rising backcloth just north of the levels and acts as setting to Wilcrick Hill and as a buffer between it and the brewery.

South of the railway line there is the Gwent Levels SSSI and Gwent Levels Landscape of Outstanding Historic Interest.

Wilcrick Hill camp directly adjacent to the west is a SM.

Landscape and visual sensitivity to housing High/Medium

The susceptibility of the area lies in it being part of the rising rural backcloth of open countryside just north of the Levels, acting as a setting to Wilcrick Hill and as a buffer between it and the brewery, having only a discontinuous rural linear settlement at Llandevenny, forming part of the floodplain and being part of a long zone of habitat connectivity along the railway. Its value lies in its designations south of the railway line as part of the Gwent Levels SSSI and Gwent Levels Landscape of Outstanding Historic Interest, its setting to Wilcrick Hill SM and landmark from many directions and along the M4. LANDMAP value is outstanding in part for cultural landscape and high for visual and sensory and historic landscape.

Does the area or its attributes contribute to the Wellbeing and Future Generations Act Goals ?

- a prosperous Wales a resilient Wales a more equal Wales a globally responsible Wales
 a Wales of cohesive communities a Wales of vibrant culture and thriving Welsh Language a healthier Wales

VALUE

Landmap Context	Aspect area value	Aspect area value
Geological Landscapes	60% low, 40% moderate	Landscape Habitats 65% moderate, 35% outstanding
Historical Landscapes	70% high, 30% moderate	Cultural Landscapes 60% outstanding, 40% low
Visual and Sensory	High	

Designations

Landscape designations comments -

National Park AONB

Historic/archaeology designations comments Gwent Levels Landscape of Outstanding Historic Interest south of the railway line; Wilcrick Hill camp directly adjacent to the west is a SM

Historic Parks and Gardens	Hist. Parks and Gardens Setting	Listed Building
Landscape of Hist. Interest Yes	Scheduled Monument Yes	Conservation Area WHS
Biodiversity designations comments	Gwent Levels SSSI south of the railway line	
SAC NNR SINC	SSSI Yes	RAMSAR

Recreation Factors

Country Park National Trail National/Regional Cycle Route

LANDSCAPE CHARACTER AND SUSCEPTIBILITY

Landscape Character Area

LCA Name Severnside LCA Number 3 also part of 0 0

Characteristics

Landform gently rounded hillside falling to the levels

Landcover pasture with some arable

Pattern

Settlement pattern clustered settlement at Llandevenny
 Woodland cover trees along roads, railway and in a few hedgerows, and wetland trees and pollards in lower areas to the west
 Boundaries mix of small to medium irregular fields with mainly outgrown hedges
 Presence of water reens to the south and west, flood zone south of railway
 Diversity simple Scale medium
 Sense of enclosure open

Function of Area

Pastoral Arable Horticulture Recreation other

Comments pasture with some arable

Functional relationship and connectivity

...with wider landscape some ...with settlement limited

...with adjacent assessed area? some Corridor?

Existing Habitat Connectivity Habitat Connectivity Opportunity

the area appears to be managed as part of a wider land holding but has no direct public access from the main settlement, other than public footpaths around Llandevenny; it has a wide zone of habitat connectivity south of the railway

Are adjacent assessed areas mutually reliant... ...visually? ...functionally

Comments -

PERCEPTUAL SUSCEPTIBILITY**Skyline**

Prominence/importance not applicable Complexity

Comments -

Key views

To settlement

From settlement

Landmarks -

Detractors power lines, electrification infrastructure for railway

Intervisibility

Site observation medium ...to key features ...from key places

Comments intervisible with the levels

Tranquillity

Noise sources roads other

Views of development one side 180 Presence of people infrequent

Summary medium

Comments the area lies adjacent to the brewery with power lines and a road with commercial traffic running adjacent, and the railway, all of which reduce its tranquillity

Settlement edge

Pre C20th edge C20-21st edge Nature of edge Form of edge

Comments n/a as the settlement does not border the area

Visual relationship and connectivity

...with settlement limited ...with wider landscape some ...with adjacent assessed area some

Setting

Comments the area is separated from the settlement but forms part of the rising backcloth just north of the levels and acts as setting to Wilcrick Hill and as a buffer between it and the brewery

Receptors	Sensitivity
rural residents	high
roads/rail/cycleways	high
long distance/public footpaths	high

Comments receptors include users of the mainline railway, residents in or near Llandeenny and users of PROWs

OTHER

Other factors -

Potential Improvements (if no development) improve and replant hedgerows, manage mature trees especially pollards, maintain reens

Mitigation (if development) any small pockets of development should be limited to high ground south of the brewery and well screened with tree planting