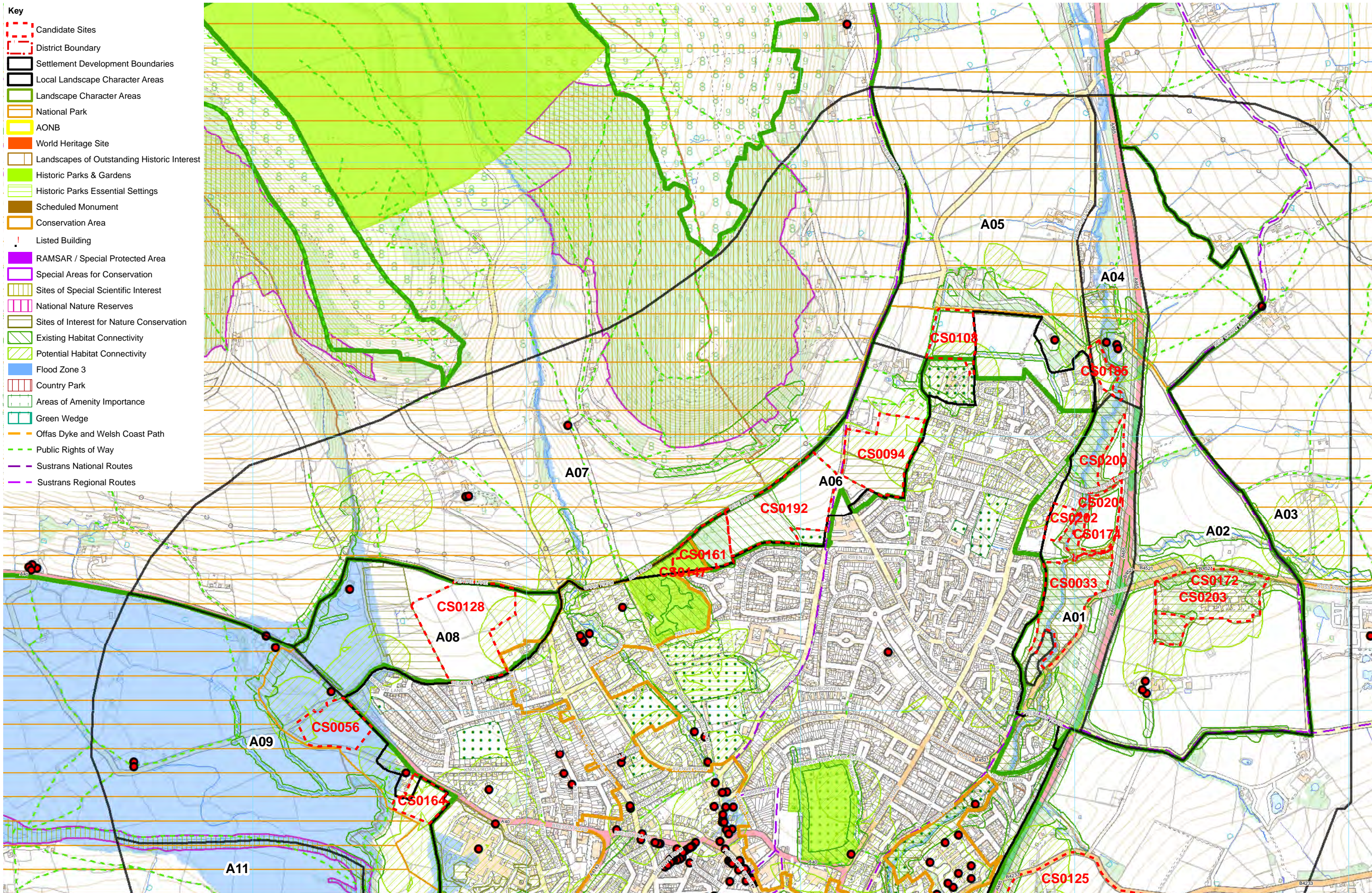


## Abergavenny candidate sites

Site reference	Sensitivity
<b>Abergavenny</b>	
CS0033	High/medium
CS0056	High/medium
CS0093	Medium
CS0094	High/medium
CS0108	High/medium
CS0125	High/medium
CS0128	High/medium
CS0145	High/medium
CS0147	High/medium
CS0161	High/medium
CS0164	High/medium
CS0172	Medium
CS0174	High/medium
CS0185	High/medium
CS0192	High/medium
CS0200	High/medium
CS0201	High/medium
CS0202	Medium
CS0203	Medium
<b>Llanfoist</b>	
CS0043	High/medium
CS0089	High
CS0130	High/medium
CS0186	Medium
CS0199	Medium

The candidate sites within this section are within the relevant settlement LLCAs. Other candidate sites in the area/vicinity not included in this section are included within adjacent settlement assessments.

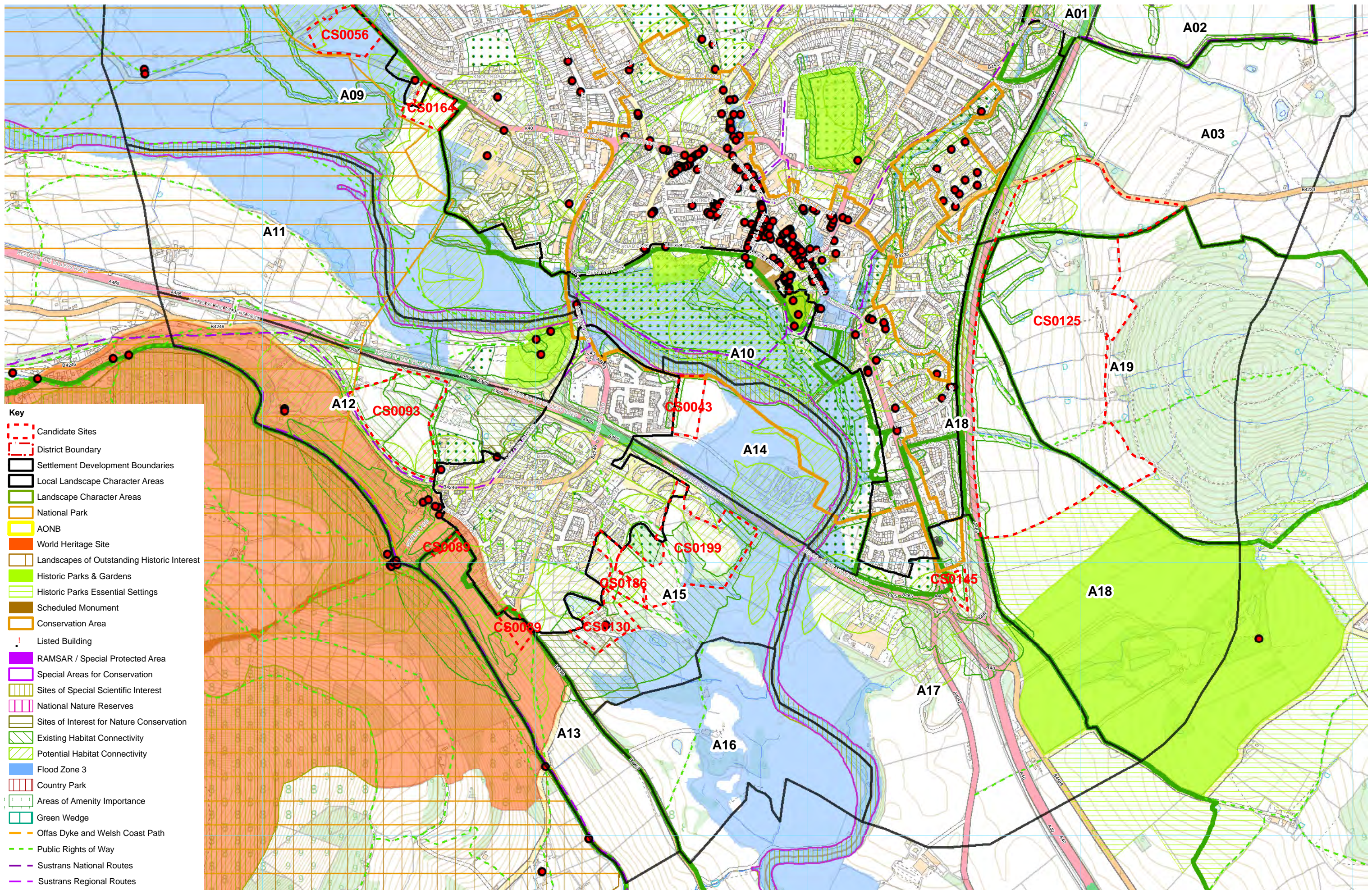
- Key**
- Candidate Sites
  - District Boundary
  - Settlement Development Boundaries
  - Local Landscape Character Areas
  - Landscape Character Areas
  - National Park
  - AONB
  - World Heritage Site
  - Landscapes of Outstanding Historic Interest
  - Historic Parks & Gardens
  - Historic Parks Essential Settings
  - Scheduled Monument
  - Conservation Area
  - ! Listed Building
  - RAMSAR / Special Protected Area
  - Special Areas for Conservation
  - Sites of Special Scientific Interest
  - National Nature Reserves
  - Sites of Interest for Nature Conservation
  - Existing Habitat Connectivity
  - Potential Habitat Connectivity
  - Flood Zone 3
  - Country Park
  - Areas of Amenity Importance
  - Green Wedge
  - Offas Dyke and Welsh Coast Path
  - Public Rights of Way
  - Sustrans National Routes
  - Sustrans Regional Routes



© Hawlfraint y Goron a hawliau cronfa ddata 2019 Arolwg Ordnans 100023415  
 © Crown copyright and database rights 2019 Ordnance Survey 100023415  
 www.whiteconsultants.co.uk

Project: Monmouthshire Landscape Sensitivity Study  
 Client: Monmouthshire County Council  
 Date: November 2019  
 Status: Final

**Settlement: Abergavenny North**  
**Site Constraints**



- Key**
- Candidate Sites
  - District Boundary
  - Settlement Development Boundaries
  - Local Landscape Character Areas
  - Landscape Character Areas
  - National Park
  - AONB
  - World Heritage Site
  - Landscapes of Outstanding Historic Interest
  - Historic Parks & Gardens
  - Historic Parks Essential Settings
  - Scheduled Monument
  - Conservation Area
  - Listed Building
  - RAMSAR / Special Protected Area
  - Special Areas for Conservation
  - Sites of Special Scientific Interest
  - National Nature Reserves
  - Sites of Interest for Nature Conservation
  - Existing Habitat Connectivity
  - Potential Habitat Connectivity
  - Flood Zone 3
  - Country Park
  - Areas of Amenity Importance
  - Green Wedge
  - Offas Dyke and Welsh Coast Path
  - Public Rights of Way
  - Sustrans National Routes
  - Sustrans Regional Routes

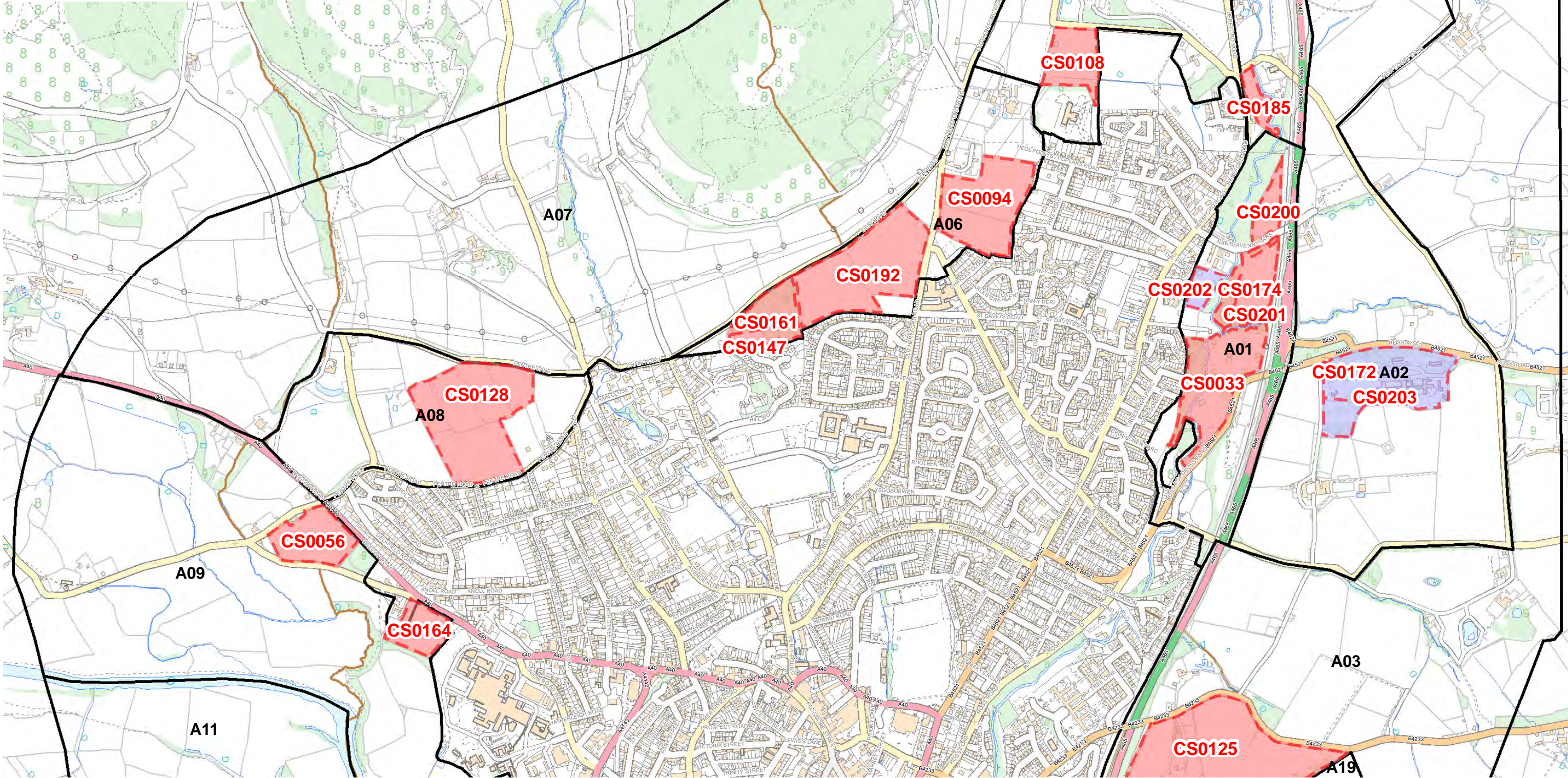
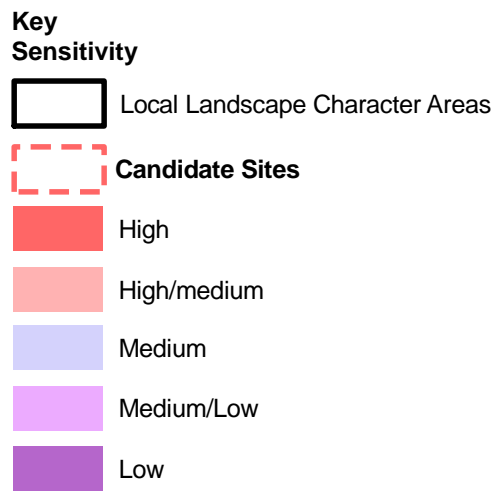
0 0.125 0.25 0.5 Kilometres

© Hawlfraint y Goron a hawliau cronfa ddata 2019 Arolwg Ordnans 100023415  
 © Crown copyright and database rights 2019 Ordnance Survey 100023415  
 www.whiteconsultants.co.uk

Project: Monmouthshire Landscape Sensitivity Study  
 Client: Monmouthshire County Council  
 Date: November 2019  
 Status: Final

**Settlement: Abergavenny South**  
**Site Constraints**



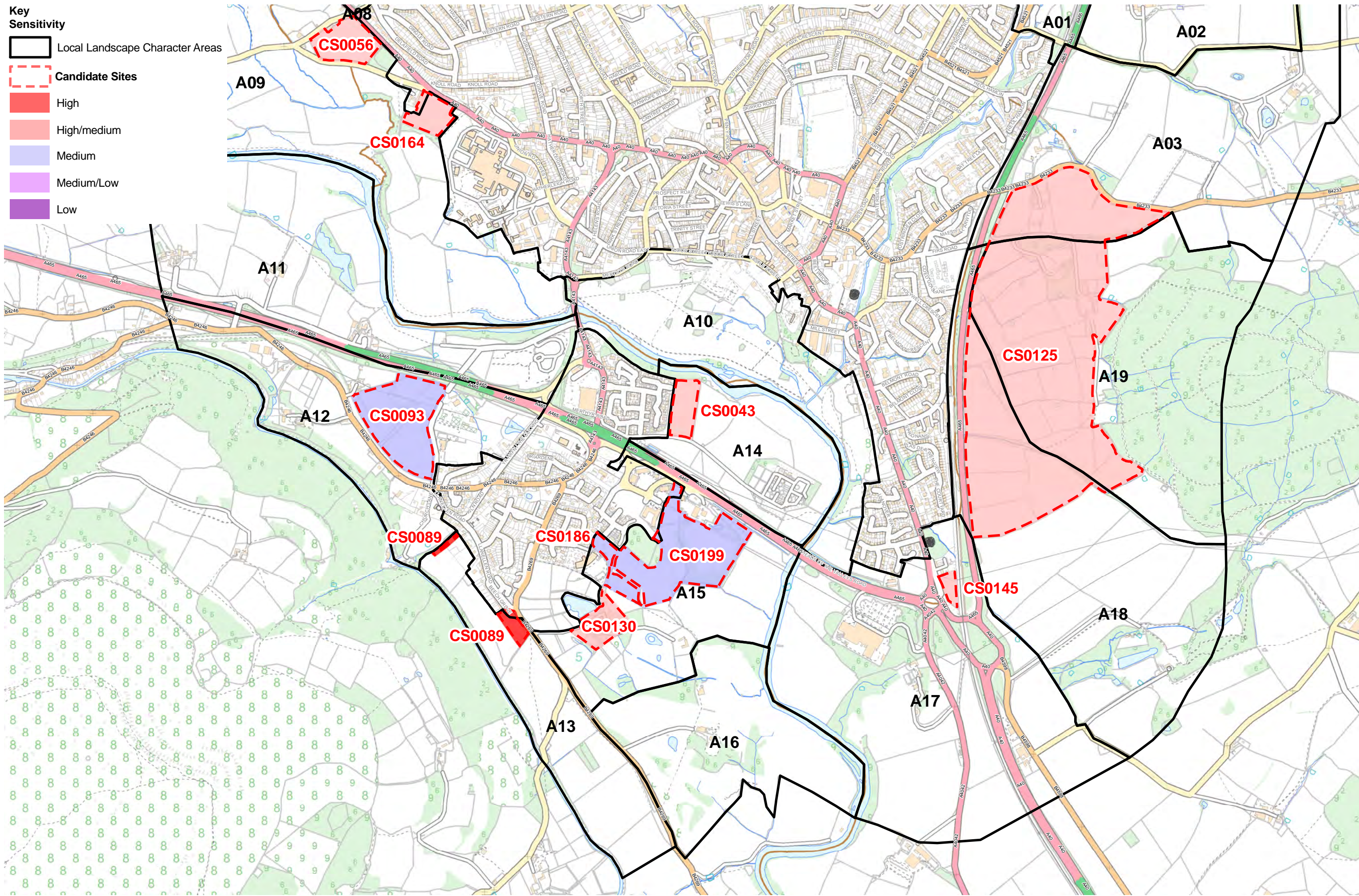
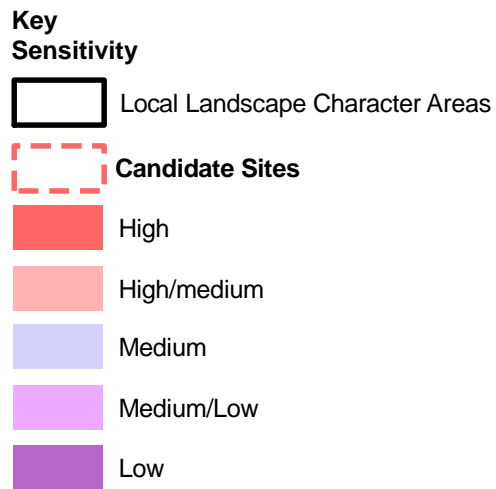


© Hawlfraint y Goron a hawliau cronfa ddata 2019 Arolwg Ordnans 100023415  
 © Crown copyright and database rights 2019 Ordnance Survey 100023415  
 www.whiteconsultants.co.uk

Project: Monmouthshire Landscape Sensitivity Study  
 Client: Monmouthshire County Council  
 Date: November 2019  
 Status: Final

# Abergavenny North

## Landscape Sensitivity of Candidate Sites



**SUMMARY**

**Key characteristics**

Steep sided, enclosed valley with convex tops to the east and small watercourse and flat valley bottom.  
Bounded by settlement to the west and by Cardiff to Manchester railway line to the east.  
Strong riparian tree cover and deciduous woodland and scrub regeneration on the valley sides.  
Rough Grassland to the east and scrub and bracken to the west on valley sides and bottom.  
Overlooked by housing to the west with glimpse views from B4521.  
Eastern upper grassland visible to railway and A465 with some trees bounding the transport corridor.  
SINC covering entire site and linking in habitats connectivity to the north and south along the River Gavenny.

**Landscape sensitivity** high/medium

The susceptibility of the site lies in its small scale mosaic of deciduous woodland and small-scale pasture and grassland in a steep sided valley with an attractive watercourse, its role as a strong green buffer, corridor and setting for the indented eastern fringes of the settlement with habitat connectivity along the River Gavenny, and its visibility to the railway and A465 corridor to the east. The value of the site is in Cwm Mill SSSI on northern edge and the SINC that covers it. LANDMAP value includes outstanding for cultural landscape. Development of the site would transform the character of the valley from semi-rural to urban and adversely affect the habitat connectivity along the valley. It would also act as a precedent for development of the sites to the north, in effect creating a linear hard edge to the settlement.

Does the site or its attributes contribute to the Wellbeing and Future Generations Act Goals?

- a prosperous Wales     a resilient Wales     a healthy Wales     a more equal Wales  
 a Wales of cohesive communities     a Wales of vibrant culture and thriving Welsh language

**LLCA CONTEXT**

**ILCA number** A01

**ILCA sensitivity** High/medium

**Relationship of site with ILCA** Middle of LLCA spanning the open valley width

**LANDMAP CONTEXT**

**Geological landscapes**

<b>Number</b>	MNMTHGL043	MNMTHGL042	MNMTHGL070
<b>Value</b>	Low	High	Low

**Landscape habitats**

<b>Number</b>	MNMTHLH098	MNMTHLH077
<b>Value</b>	Moderate	Low

**Visual and sensory**

<b>Number</b>	MNMTHVS051
<b>Value</b>	Moderate

**Historical landscapes**

<b>Number</b>	MNMTHHL031
<b>Value</b>	Moderate

**Cultural landscapes**

**Number** MNMTHCL032

**Value** Outstanding

Landscape Character Area

**Number** A01 **also includes**

## DESIGNATIONS

**National Park** AONB

Landscape designations comments

-

**Landscape of Hist. interest** **Historic Parks and Gardens**

**Hist.Parks and Gardens essential setting**

**SAM** **Conservation Area** **Listed Building** **World Heritage Site**

**Historic / archaeology designations comments** -

**SAC** **NNR** **SINC** Yes **SSSI** Yes **RAMSAR**

**Biodiversity designations comments** Cwm Mill SSSI on northern edge, SINC along valley floor- pasture and riparian corridor.

## Other

**Country Park** **National Trail** **National / Regional Cycle Route**

**SUMMARY**

**Key characteristics**

Lower valley slopes rising from valley floor  
Medium scale irregular pastoral field in good condition with generally low-cut hedges.  
Area is overlooked from the surrounding hills and valley floor.  
Small rural clusters of dwellings adjacent, some along the A40[T].  
Settlement edge provides a minor detractor, those screened and filtered to an extent by A40 vegetation.  
Directly adjacent to National Park and/or in flood plain.  
Listed building at Pentre House adjacent.

**Landscape sensitivity** high/medium

The susceptibility of the area lies the openness of the rising field above, and intervisible with the open valley floor in the National Park, the relationship with Pentre House and other essentially rural dwellings south of the A40 which forms a barrier and buffer to the housing form, and the overlooking of the area from steep valley sides within the National Park. The area is also shown as being within floodzone 3, despite its slope. The value of the area lies in its location within or adjacent to the Brecon Beacons National Park, and the listed building at Pentre House. The LANDMAP value is outstanding for cultural landscapes, and high for visual and sensory and historic landscapes.

Does the site or its attributes contribute to the Wellbeing and Future Generations Act Goals?

- a prosperous Wales     a resilient Wales     a healthy Wales     a more equal Wales  
 a Wales of cohesive communities     a Wales of vibrant culture and thriving Welsh language

**LLCA CONTEXT**

**IICA number** A09  
**IICA sensitivity** High/medium  
**Relationship of site with IICA** On lower slopes rising from valley floor

**LANDMAP CONTEXT**

**Geological landscapes**

<b>Number</b>	MNMTHGL015	MNMTHGL040
<b>Value</b>	Moderate	Moderate

**Landscape habitats**

<b>Number</b>	MNMTHLH121
<b>Value</b>	Moderate

**Visual and sensory**

<b>Number</b>	MNMTHVS046
<b>Value</b>	High

**Historical landscapes**

<b>Number</b>	MNMTHHL061
<b>Value</b>	High

**Cultural landscapes**

<b>Number</b>	MNMTHCL040
---------------	------------



**Value** Outstanding

Landscape Character Area

**Number** A09 **also includes**

## DESIGNATIONS

**National Park** AONB

Landscape designations comments

National Park lies adjacent to the south

**Landscape of Hist. interest** **Historic Parks and Gardens**

**Hist.Parks and Gardens essential setting**

**SAM** **Conservation Area** **Listed Building** **World Heritage Site**

**Historic / archaeology designations comments** Listed building at Pentre House to the north west

**SAC** **NNR** **SINC** **SSSI** **RAMSAR**

**Biodiversity designations comments** -

## Other

**Country Park** **National Trail** **National / Regional Cycle Route**

**SUMMARY**

**Key characteristics**

Forms part of the lower slopes of the Blorenge falling from the Monmouthshire and Brecon Canal towards the A465[T] with a treed mound located centrally

Irregular fields of pasture bounded by a mix of boundaries, mainly outgrown hedges with trees.

Strong tree cover along dismantled railway adjacent [now footpath/cycleway] and along field boundaries to the south.

Cluster of rural farm buildings and dwellings in western corner.

Abuts plant nursery to the east and is overlooked at close range by the A465[T].

The A465[T] and power lines are detractors and reduce tranquillity.

The area lies on the edge of the National Park to the west and the Blaenavon World Heritage Site to the south.

**Landscape sensitivity** medium

The susceptibility of the site lies in the limited connection between the site and Llanfoist causing a significant extension to the west, its well treed boundaries to fields and the small scale irregular pastures, the rural dwelling cluster to the west, the mound, which though not listed may be a susceptible feature. The value of the area lies in the National Park and the World Heritage site designations to the south and west, the listed building on the edge of Llanfoist, and the national cycleway adjacent. The LANDMAP value is high for visual and sensory, historic landscapes and cultural landscapes.

Does the site or its attributes contribute to the Wellbeing and Future Generations Act Goals?

a prosperous Wales     a resilient Wales     a healthy Wales     a more equal Wales

a Wales of cohesive communities     a Wales of vibrant culture and thriving Welsh language

**LLCA CONTEXT**

**ILCA number** A12

**ILCA sensitivity** High/medium

**Relationship of site with ILCA** Forms part of Area A012 which does not lie within the National Park and World Heritage Site on the lower slopes to the River Usk.

**LANDMAP CONTEXT**

**Geological landscapes**

**Number** MNMTHGL044

**Value** Moderate

**Landscape habitats**

**Number** MNMTHLH123    MNMTHLH122

**Value** Moderate    Low

**Visual and sensory**

**Number** MNMTHVS046

**Value** High

**Historical landscapes**

**Number** MNMTHHL061

**Value** High

**Cultural landscapes**

**Number** MNMTHCL047

**Value** High

Landscape Character Area

**Number** A12 **also includes**

## DESIGNATIONS

**National Park** Yes **AONB**

Landscape designations comments

National Park brushes the western corner of the site.

**Landscape of Hist. interest** **Historic Parks and Gardens**

**Hist. Parks and Gardens essential setting**

**SAM** **Conservation Area** **Listed Building** **World Heritage Site**

**Historic / archaeology designations comments** World Heritage Site lies across the B road to the south west and a listed building lies on the south eastern corner.

**SAC** **NNR** **SINC** **SSSI** **RAMSAR**

**Biodiversity designations comments** -

## Other

**Country Park** **National Trail** **National / Regional Cycle Route**

**SUMMARY**

**Key characteristics**

Part of a steeply sloping hillside rising up from Abergavenny to the Sugar Loaf complex of hills.  
Pastures with low-cut and outgrown hedgerows bounded by a lane to the west and housing to the south and east.  
An electricity sub-station lies to the north with associated pylons.  
The settlement edge is relatively new and slightly prominent to the south.  
The site forms part of the hillside setting to the town to the north west and is visible from the National Park to the east such as from Ysgryd Fawr and from the west.  
The area is close to the National Park to the west.

**Landscape sensitivity** high/medium

The susceptibility of the site lies in its high visibility on the steep hillsides which act as a strong backcloth to the north west of the town, its open character to the north east. The detractors of the substation and powerlines do not disrupt this green backcloth significantly. The value of the area lies in the adjacent National Park, to which it contributes a buffer and setting, the SINC and the National cycle route adjacent. The LANDMAP value is outstanding for cultural landscapes and high for historic landscapes.

Does the site or its attributes contribute to the Wellbeing and Future Generations Act Goals?

- a prosperous Wales
- a resilient Wales
- a healthy Wales
- a more equal Wales
- a Wales of cohesive communities
- a Wales of vibrant culture and thriving Welsh language

**LLCA CONTEXT**

**LLCA number** A06  
**LLCA sensitivity** High/medium  
**Relationship of site with LLCA** Three fields on the slopes.

**LANDMAP CONTEXT**

**Geological landscapes**

<b>Number</b>	MNMTHGL015	MNMTHGL070
<b>Value</b>	Moderate	Low

**Landscape habitats**

<b>Number</b>	MNMTHLH077	MNMTHLH098
<b>Value</b>	Low	Moderate

**Visual and sensory**

<b>Number</b>	MNMTHVS051
<b>Value</b>	Moderate

**Historical landscapes**

<b>Number</b>	MNMTHHL033
<b>Value</b>	High

**Cultural landscapes**

<b>Number</b>	MNMTHCL033
<b>Value</b>	Outstanding



**SUMMARY**

**Key characteristics**

Sloping valley side rising towards Deri and the foothills of the Black Mountains.  
Bounded by new settlement to the east, school grounds to the south, Ty Gwyn Hall grounds to the north and open countryside in the west.  
Medium sized regular pastoral fields with trees associated with some outgrown and degraded hedgerows.  
Ty Gwyn Hall has significant associated mature coniferous as well as deciduous trees in its grounds to the north.  
Pylon and power lines on the southern edge.  
Llantilio Pertholey primary school provides a soft treed edge to the settlement to the south west.  
Views are possible across the area to and from the Ysgyrd Fawr and Black Mountains.  
National Park lies directly to the north.

**Landscape sensitivity** high/medium

The susceptibility of the area lies in its character as open distinctly sloping countryside of rural character between the Black Mountains and Ysgyrd Fawr, an important outlying hill. It therefore contributes to the setting of, and is overlooked by these hills within the Brecon Beacons National Park. At a more detailed level the setting of Ty Gwyn Hall is a consideration. Housing on the site would be at the same level and above the house and would adversely affect the perception of it as a historic house in countryside. Also susceptible would be the habitat connectivity of the hedge boundaries. The value of the area lies in its location adjacent to the Brecon Beacons National Park. LANDMAP value is outstanding for cultural landscapes and high for historic landscapes. Development on the site would be significantly more apparent than housing on the lower lying land to the east due to the steep slopes.

Does the site or its attributes contribute to the Wellbeing and Future Generations Act Goals?

- a prosperous Wales
- a resilient Wales
- a healthy Wales
- a more equal Wales
- a Wales of cohesive communities
- a Wales of vibrant culture and thriving Welsh language

**LLCA CONTEXT**

**LLCA number** A05  
**LLCA sensitivity** High/medium  
**Relationship of site with LLCA** On slopes on southern edge of the area adjacent to housing site under construction

**LANDMAP CONTEXT**

**Geological landscapes**

**Number** MNMTHGL015  
**Value** Moderate

**Landscape habitats**

<b>Number</b>	MNMTHLH098	MNMTHLH077
<b>Value</b>	Moderate	Low

**Visual and sensory**

<b>Number</b>	MNMTHVS051	MNMTHVS072
<b>Value</b>	Moderate	Moderate

**Historical landscapes**

<b>Number</b>	MNMTHHL033	MNMTHHL031
---------------	------------	------------

**Value** High Moderate

Cultural landscapes

**Number** MNMTHCL029

**Value** High

Landscape Character Area

**Number** A05 **also includes**

## DESIGNATIONS

**National Park** AONB

Landscape designations comments

National Park adjacent to the north

**Landscape of Hist. interest** **Historic Parks and Gardens**

**Hist.Parks and Gardens essential setting**

**SAM** **Conservation Area** **Listed Building** **World Heritage Site**

**Historic / archaeology designations comments** -

**SAC** **NNR** **SINC** **SSSI** **RAMSAR**

**Biodiversity designations comments** -

## Other

**Country Park** **National Trail** **National / Regional Cycle Route**

**SUMMARY**

**Key characteristics**

Lower slopes of distinct irregular conical hill of Ysgyrd Fach.  
 Pastoral, irregular fields with low cut hedgerows and farmsteads on slopes.  
 Bounded by the mixed woodland top of the hill to the east and by the A465 Hereford Road to the west, which separates the area from Abergavenny but reduces tranquillity.  
 The hill and site forms the unspoilt open countryside backcloth to Abergavenny including key views from Castle Meadows.  
 Views across to the Sugar Loaf and Bloreng from PROWs crossing the site.  
 Coldbrook House Historic Park and Garden essential setting lies adjacent to the south.

**Landscape sensitivity** high/medium\* \*A standard methodology relating to housing development has been applied to all assessments. The suitability for other development such as employment has not been assessed at this stage.

The susceptibility of the area lies in its location and character as unspoilt lower pastoral slopes complementing the landmark wooded hill of Ysgyrd Fach, its clear separation from the town by the railway and A465, and openness of low cut hedgerows and isolated farmsteads and its role as the lower part of the backcloth to the town with views from the west. Its value lies in its location adjacent to the essential setting to Coldbrook House Historic Park and Garden to the south as well as access on PROWs. LANDMAP value is outstanding for cultural landscape, and high for visual & sensory and geological landscape.

Does the site or its attributes contribute to the Wellbeing and Future Generations Act Goals?

- a prosperous Wales   
  a resilient Wales   
  a healthy Wales   
  a more equal Wales  
 a Wales of cohesive communities   
  a Wales of vibrant culture and thriving Welsh language

**LLCA CONTEXT**

<b>ILCA number</b>	A19	A18	A03
<b>ILCA sensitivity</b>	High	High/medium	High/medium
<b>Relationship of site with ILCA</b>	Lies in mainly in the western half of A19, and also the northern part of A18 and southern part of A03		

**LANDMAP CONTEXT**

**Geological landscapes**

**Number** MNMTHGL070  
**Value** Low

**Landscape habitats**

<b>Number</b>	MNMTHLH098	MNMTHLH003
<b>Value</b>	Moderate	Moderate

**Visual and sensory**

<b>Number</b>	MNMTHVS013	MNMTHVS015
<b>Value</b>	High	High

**Historical landscapes**

**Number** MNMTHHL049  
**Value** Outstanding

**Cultural landscapes**



**Number** MNMTHCL029

**Value** High

Landscape Character Area

**Number** A19 **also includes** A18 A03

## DESIGNATIONS

**National Park** AONB

Landscape designations comments

-

**Landscape of Hist. interest** **Historic Parks and Gardens**

**Hist.Parks and Gardens essential setting**

**SAM** **Conservation Area** **Listed Building** **World Heritage Site**

**Historic / archaeology designations comments** Coldbrook House Historic Park and Garden lies to the south, and the essential setting abuts the site

**SAC** **NNR** **SINC** **SSSI** **RAMSAR**

**Biodiversity designations comments** -

## Other

**Country Park** **National Trail** **National / Regional Cycle Route**

**SUMMARY**

**Key characteristics**

Part of a sloping hillside ultimately running up to the Sugar Loaf.  
A pastoral/grassland landscape of fields with low-cut hedgerows with few associated trees.  
Tree cover is associated with a large garden to the east.  
The adjacent settlement edge at a lower level is moderately well established with some integrating vegetation.  
The area is directly adjacent to the National Park and forms part of the hillside setting to the town to the north west and is visible from the National Park to the north and from the south and from the west.

**Landscape sensitivity** high/medium

The susceptibility of the area lies in its continuity of open landscape of pastoral slopes leading up to Sugar Loaf, with Ilwydu Court to which it contributes a landscape setting and separates from the settlement edge, and the area's openness. Its value lies in being adjacent to and overlooked by the National Park and acting as a buffer between it and the settlement, the Conservation Area the south east and the grassland SINC to the west. LANDMAP value is high for visual and sensory, historic landscape and cultural landscape. Development here would significantly extend the settlement into an open landscape adversely affecting the National Park's setting.

Does the site or its attributes contribute to the Wellbeing and Future Generations Act Goals?

- a prosperous Wales     a resilient Wales     a healthy Wales     a more equal Wales  
 a Wales of cohesive communities     a Wales of vibrant culture and thriving Welsh language

**LLCA CONTEXT**

**LLCA number** A08  
**LLCA sensitivity** High/medium  
**Relationship of site with LLCA** Lies centrally within pastoral area

**LANDMAP CONTEXT**

Geological landscapes

<b>Number</b>	MNMTHGL015	MNMTHGL002
<b>Value</b>	Moderate	Moderate

Landscape habitats

<b>Number</b>	MNMTHLH098	MNMTHLH077
<b>Value</b>	Moderate	Low

Visual and sensory

<b>Number</b>	MNMTHVS046
<b>Value</b>	High

Historical landscapes

<b>Number</b>	MNMTHHL033
<b>Value</b>	High

Cultural landscapes

<b>Number</b>	MNMTHCL033
<b>Value</b>	High



**SUMMARY**

**Key characteristics**

Land set above adjacent road junction.  
 Pasture/grass field bounded by trees and vegetation on two sides and existing housing to the north.  
 Railway and major road junction lie adjacent to the east and west respectively.  
 Edge exposed to view from the A40[T], A465[T] and railway with associated junction which are noise sources and detractors along with the power line which runs through the site.  
 The area provides a semi-rural introduction to Abergavenny.  
 Conservation Area to the north

**Landscape sensitivity** high/medium\* \*A standard methodology relating to housing development has been applied to all assessments. The suitability for other development such as employment has not been assessed at this stage.

The susceptibility of the area lies in its raised location directly on a major road junction, its contribution to existing habitat connectivity associated with the transport corridors, and its visibility from the A40[T], A465[T] and railway at a gateway to Abergavenny. Its value lies in LANDMAP which is high for visual & sensory and outstanding for cultural landscape. Development on the site would clearly extend the settlement form to the south and adversely affect the southern gateway to it.

Does the site or its attributes contribute to the Wellbeing and Future Generations Act Goals?

- a prosperous Wales   
  a resilient Wales   
  a healthy Wales   
  a more equal Wales  
 a Wales of cohesive communities   
  a Wales of vibrant culture and thriving Welsh language

**LLCA CONTEXT**

**LLCA number** A17

**LLCA sensitivity** High/medium

**Relationship of site with LLCA** Small field in northern part of the area bounded by major road junction and railway

**LANDMAP CONTEXT**

**Geological landscapes**

**Number** MNMTHGL041

**Value** Moderate

**Landscape habitats**

**Number** MNMTHLH077    MNMTHLH098

**Value** Low    Moderate

**Visual and sensory**

**Number** MNMTHVS046    MNMTHVS048    MNMTHVS072

**Value** High    Low    Moderate

**Historical landscapes**

**Number** MNMTHHL031

**Value** Moderate

**Cultural landscapes**

**Number** MNMTHCL032    MNMTHCL054

**Value** Outstanding    Outstanding



**SUMMARY**

**Key characteristics**

Part of a steeply sloping hillside rising up from Abergavenny to the Sugar Loaf complex of hills. Paddock overgrown with tree/scrub cover. The settlement edge at a lower level is relatively new and slightly prominent to the south. The area forms part of the hillside setting to the town to the north west and is visible from the National Park to the east such as from Ysgyrd Fawr and from the west. Part of former The Hill centre's grounds which are now developed for low density housing to the west. Lies within Conservation Area. The site is close to the National Park to the north west with Deri Road as the boundary.

**Landscape sensitivity** high/medium

The susceptibility of the area lies in its potential visibility and effect on tree and scrub cover on the steep hillsides which act as a strong backcloth to the north west of the town, and which enclose the built form on the lower slopes and offers habitat connectivity. The value of the area lies in its location in the Conservation Area and historic park and garden area focused around the former Hill centre and position close to the nearby National Park, to which it contributes a buffer and setting. The LANDMAP value is outstanding for cultural landscapes and high for historic landscapes for the majority of the area. The lower wooded slopes may be able to accommodate a small amount of low density housing at the lowest level but the vast majority of the tree and scrub cover should be retained as a buffer between the town and the National Park and to mitigate views to the south.

Does the site or its attributes contribute to the Wellbeing and Future Generations Act Goals?

- a prosperous Wales
- a resilient Wales
- a healthy Wales
- a more equal Wales
- a Wales of cohesive communities
- a Wales of vibrant culture and thriving Welsh language

**LLCA CONTEXT**

**LLCA number** A06  
**LLCA sensitivity** High/medium  
**Relationship of site with LLCA** Woodland/scrub/rough grassland in south western corner

**LANDMAP CONTEXT**

**Geological landscapes**

**Number** MNMTHGL015  
**Value** Moderate

**Landscape habitats**

<b>Number</b>	MNMTHLH077	MNMTHLH098
<b>Value</b>	Low	Moderate

**Visual and sensory**

<b>Number</b>	MNMTHVS072	MNMTHVS051
<b>Value</b>	Moderate	Moderate

**Historical landscapes**

<b>Number</b>	MNMTHHL031	MNMTHHL033
<b>Value</b>	Moderate	High

**Cultural landscapes**

**Number** MNMTHCL032 MNMTHCL033

**Value** Outstanding Outstanding

**Landscape Character Area**

**Number** A06 **also includes**

**DESIGNATIONS**

**National Park** AONB

Landscape designations comments  
adjacent to National Park

**Landscape of Hist. interest** **Historic Parks and Gardens** Yes

**Hist.Parks and Gardens essential setting**

**SAM** **Conservation Area** Yes **Listed Building** **World Heritage Site**

**Historic / archaeology designations comments** in Conservation Area and historic park and garden formerly The Hill

**SAC** **NNR** **SINC** **SSSI** **RAMSAR**

**Biodiversity designations comments** -

**Other**

**Country Park** **National Trail** **National / Regional Cycle Route**

**SUMMARY**

**Key characteristics**

Part of a steeply sloping hillside rising up from Abergavenny to the Sugar Loaf complex of hills. Paddock overgrown with tree/scrub cover. The settlement edge at a lower level is relatively new and slightly prominent to the south. The area forms part of the hillside setting to the town to the north west and is visible from the National Park to the east such as from Ysgyrd Fawr and from the west. Part lies in former The Hill centre historic park and garden which are now partly developed for low density housing to the west. Lies within Conservation Area. The site is adjacent to the National Park to the north west with Deri Road as the boundary.

**Landscape sensitivity** high/medium

The susceptibility of the area lies in its potential visibility and effect on tree and scrub cover on the steep hillsides which act as a strong backcloth to the north west of the town, and which enclose the built form on the lower slopes and offers habitat connectivity. The value of the area lies in its location partly in the Conservation Area and historic Park and garden area focused around the former Hill centre and position adjacent to the nearby National Park, to which it contributes a buffer and setting. The LANDMAP value is outstanding for cultural landscapes and high for historic landscapes for the majority of the area. The lower wooded slopes may be able to accommodate a small amount of low density housing at the lowest level to the south west but the vast majority of the tree and scrub cover should be retained as a buffer between the town and the National Park and to mitigate views to the south and north east.

Does the site or its attributes contribute to the Wellbeing and Future Generations Act Goals?

- a prosperous Wales   
  a resilient Wales   
  a healthy Wales   
  a more equal Wales  
 a Wales of cohesive communities   
  a Wales of vibrant culture and thriving Welsh language

**LLCA CONTEXT**

**IICA number**      A06  
**IICA sensitivity**    High/medium  
**Relationship of site with IICA**    Part of the upper sloping hillside.

**LANDMAP CONTEXT**

<b>Geological landscapes</b>		
<b>Number</b>	MNMTHGL015	MNMTHGL070
<b>Value</b>	Moderate	Low
<b>Landscape habitats</b>		
<b>Number</b>	MNMTHLH077	MNMTHLH098
<b>Value</b>	Low	Moderate
<b>Visual and sensory</b>		
<b>Number</b>	MNMTHVS051	MNMTHVS072
<b>Value</b>	Moderate	Moderate
<b>Historical landscapes</b>		
<b>Number</b>	MNMTHHL033	MNMTHHL031





**SUMMARY**

**Key characteristics**

Lower valley slopes rising to drumlin on southern edge.  
Medium scale semi-regular pastoral field with tree belt on southern edge with low hedge to A40[T] to the north.  
Riparian tree cover to the west reduces longer views but site visible to users of A40[T] which also reduces the tranquillity of the site.  
Traditional farm complex cluster, converted to housing, to west at Red Barn including a listed building.  
Intervisibility with valley sides to south at a distance.  
Settlement edge provides a minor detractor including hospital chimney.  
Southern edge adjacent to National Park.

**Landscape sensitivity** high/medium

The susceptibility of the site lies in its essentially rural character, the distinctive drumlin to the south, its role as separation between the traditional rural farm complex at Redbarn with its listed building and the built up part of Abergavenny ie the hospital. A public footpath runs adjacent with sensitive receptors. There appears to be hope value for development which is intended to be realised with the planting of a tree belt to the south but this cannot disguise the link with the drumlin as it emphasises its lower slope as it crosses it. The value of the site lies in the National Park and listed building adjacent and intervisibility with the designated valley sides.

Does the site or its attributes contribute to the Wellbeing and Future Generations Act Goals?

- a prosperous Wales
- a resilient Wales
- a healthy Wales
- a more equal Wales
- a Wales of cohesive communities
- a Wales of vibrant culture and thriving Welsh language

**LLCA CONTEXT**

**LLCA number** A09  
**LLCA sensitivity** High/medium  
**Relationship of site with LLCA** on the edge of Area A09 adjacent to settlement with the site outside the National Park and floodplain.

**LANDMAP CONTEXT**

**Geological landscapes**

**Number** MNMTHGL015  
**Value** Moderate

**Landscape habitats**

**Number** MNMTHLH121 MNMTHLH077  
**Value** Moderate Low

**Visual and sensory**

**Number** MNMTHVS046  
**Value** High

**Historical landscapes**

**Number** MNMTHHL061  
**Value** High

**Cultural landscapes**

<b>Number</b>	MNMTHCL032	MNMTHCL040
<b>Value</b>	High	Outstanding

Landscape Character Area

<b>Number</b>	A09	<b>also includes</b>
---------------	-----	----------------------

## DESIGNATIONS

<b>National Park</b>	<b>AONB</b>
----------------------	-------------

Landscape designations comments

southern edge is adjacent to National Park

<b>Landscape of Hist. interest</b>	<b>Historic Parks and Gardens</b>
------------------------------------	-----------------------------------

**Hist. Parks and Gardens essential setting**

<b>SAM</b>	<b>Conservation Area</b>	<b>Listed Building</b>	<b>World Heritage Site</b>
------------	--------------------------	------------------------	----------------------------

<b>Historic / archaeology designations comments</b>	listed building at Redbarn farmhouse to west
---	--

<b>SAC</b>	<b>NNR</b>	<b>SINC</b>	<b>SSSI</b>	<b>RAMSAR</b>
------------	------------	-------------	-------------	---------------

<b>Biodiversity designations comments</b>	-
---	---

## Other

<b>Country Park</b>	<b>National Trail</b>	<b>National / Regional Cycle Route</b>
---------------------	-----------------------	--

**SUMMARY**

**Key characteristics**

The main northern part of Maindiff Court Hospital which appears as a series of scattered buildings within a very strong wooded parkland setting dominated by mature conifers with some deciduous trees.

It lies within a gently sloping valley side on the lower slopes of the Ysgryd Fawr and Ysgryd Fach.

Its surroundings are primarily agricultural and fairly open with arable rectilinear fields with a low cut hedges and fences and few trees.

Other settlement comprises of scattered rural farmhouses and dwellings.

Views are possible across the area towards the Ysgryd Fawr.

The Brecon Beacons National Park lies to the north east.

**Landscape sensitivity** medium\*

\*A standard methodology relating to housing development has been applied to all assessments. The suitability for other development such as employment has not been assessed at this stage.

The susceptibility of the hospital grounds lies in its separation from Abergavenny by the A465 and railway line, its location within open countryside of rural character rising towards the Ysgryd Fawr and Ysgryd Fach, for which it acts as part of the setting. The strong parkland coniferous and deciduous tree cover effectively screens the majority of buildings from the rest of the area and need retention. This effectively screens or filters the majority of buildings from the rest of the area and would need retention. The value lies in part of the area being located close to the National Park and forming part of its setting and the SINC which covers the site. The LANDMAP value is outstanding for historic landscapes and cultural landscapes and high for geological landscapes for part of the area. The hospital might be an opportunity for very low density development but sensitive design and retention of the vast majority of trees and parkland character would be essential to maintain the overall character of the area.

Does the site or its attributes contribute to the Wellbeing and Future Generations Act Goals?

- a prosperous Wales
- a resilient Wales
- a healthy Wales
- a more equal Wales
- a Wales of cohesive communities
- a Wales of vibrant culture and thriving Welsh language

**LLCA CONTEXT**

**LLCA number** A02

**LLCA sensitivity** High/medium

**Relationship of site with LLCA** Maindiff Court Hospital and grounds form an area of distinct character from the rest of the rural land uses around it in Area A02.

**LANDMAP CONTEXT**

Geological landscapes

**Number** MNMTHGL042

**Value** High

Landscape habitats

**Number** MNMTHLH098

**Value** Moderate

Visual and sensory

**Number** MNMTHVS051

**Value** Moderate

Historical landscapes

**Number** MNMTHHL049

**Value** Outstanding

Cultural landscapes

**Number** MNMTHCL032

**Value** Outstanding

Landscape Character Area

**Number** A02 **also includes**

**DESIGNATIONS**

**National Park** AONB

Landscape designations comments  
close to National Park to the north east

**Landscape of Hist. interest** **Historic Parks and Gardens**

**Hist.Parks and Gardens essential setting**

**SAM** **Conservation Area** **Listed Building** **World Heritage Site**

**Historic / archaeology designations comments** Listed buildings at Maindiff Farm to the south west

**SAC** **NNR** **SINC** **Yes** **SSSI** **RAMSAR**

**Biodiversity designations comments** Maindiff Court Hospital SINC grasslands and parkland

**Other**

**Country Park** **National Trail** **National / Regional Cycle Route**

**SUMMARY**

**Key characteristics**

Convex top and sides of steep sided, enclosed valley.

Small-scale pasture/grassland, woodland and riparian tree cover.

Habitat connectivity on all boundaries.

Bounded by River Gavenny to the west and strong riparian tree cover and Cardiff to Manchester railway line and A465 to the east.

Visible to railway and road with some trees bounding the transport corridor.

SINC in valley corridor adjacent.

**Landscape sensitivity** high/medium\* \*A standard methodology relating to housing development has been applied to all assessments. The suitability for other development such as employment has not been assessed at this stage.

The susceptibility of the site lies in its small scale and rural character, its woodland and trees and significant separation from the settlement by the intervening steep sided wooded valley with an attractive watercourse. It is also highly visible from the railway and development on the site would be noticeable from the A465 changing perception of the character of the landscape on the eastern edge of Abergavenny as it relates to the National Park. The value of the site lies in Cwm Mill SSSI on southern edge, and the SINC adjacent. LANDMAP value includes high for cultural landscapes.

Does the site or its attributes contribute to the Wellbeing and Future Generations Act Goals?

- a prosperous Wales     a resilient Wales     a healthy Wales     a more equal Wales  
 a Wales of cohesive communities     a Wales of vibrant culture and thriving Welsh language

**LLCA CONTEXT**

**LLCA number** A01

**LLCA sensitivity** High/medium

**Relationship of site with LLCA** Upper valley side pasture and woodland west of the River Gavenny.

**LANDMAP CONTEXT**

**Geological landscapes**

**Number** MNMTHGL042

**Value** High

**Landscape habitats**

**Number** MNMTHLH098

**Value** Moderate

**Visual and sensory**

**Number** MNMTHVS051

**Value** Moderate

**Historical landscapes**

**Number** MNMTHHL031

**Value** Moderate

**Cultural landscapes**

**Number** MNMTHCL029

**Value** High

Landscape Character Area

Number A01 also includes

DESIGNATIONS

National Park AONB

Landscape designations comments

-

Landscape of Hist. interest Historic Parks and Gardens

Hist.Parks and Gardens essential setting

SAM Conservation Area Listed Building World Heritage Site

Historic / archaeology designations comments -

SAC NNR SINC Yes SSSI Yes RAMSAR

Biodiversity designations comments Cwm Mill SSSI on southern edge, SINC along valley floor and sides- pasture and riparian corridor.

Other

Country Park National Trail National / Regional Cycle Route

**SUMMARY**

**Key characteristics**

Small, enclosed valley side of the River Gavenny and floodplain.  
Bounded by new development on rising land to the west and by Cardiff to Manchester railway line to the east.  
Small-scale pasture/meadow with strong riparian tree cover and woodland on two sides and trimmed hedges on other sides .  
Small rural settlement of Llantilio Pertholey with its listed buildings including church with a stone tower in the valley bottom to the north east.  
Area to the north is within the National Park.

**Landscape sensitivity** high/medium

The susceptibility of the site lies in its character as an attractive small-scale pasture in a small valley with an attractive watercourse, all contributing to habitat connectivity, and acting as a setting for the Church and other traditional buildings in Llantilio Pertholey, maintaining a separating buffer with the expanded settlement to the south west. The value of the area lies in the listed buildings in Llantilio Pertholey adjacent and proximity to the National Park. The LANDMAP value is high for historic landscape and cultural landscape.

Does the site or its attributes contribute to the Wellbeing and Future Generations Act Goals?

- a prosperous Wales
- a resilient Wales
- a healthy Wales
- a more equal Wales
- a Wales of cohesive communities
- a Wales of vibrant culture and thriving Welsh language

**LLCA CONTEXT**

**LLCA number** A04  
**LLCA sensitivity** High/medium  
**Relationship of site with LLCA** Field on south eastern edge

**LANDMAP CONTEXT**

**Geological landscapes**  
**Number** MNMTHGL015  
**Value** Moderate

**Landscape habitats**  
**Number** MNMTHLH098  
**Value** Moderate

**Visual and sensory**  
**Number** MNMTHVS051  
**Value** Moderate

**Historical landscapes**  
**Number** MNMTHHL033  
**Value** High

**Cultural landscapes**  
**Number** MNMTHCL029  
**Value** High





**SUMMARY**

**Key characteristics**

Part of a steeply sloping hillside rising up from Abergavenny to the Sugar Loaf complex of hills.  
Pastures with low-cut hedgerows bounded by a lane to the west and housing to the south and school to the east.  
The settlement edge is relatively new and slightly prominent to the east.  
The site forms part of the hillside setting to the town to the north west and is visible from the National Park to the east such as from Ysgyrd Fawr and from the west.  
The area is adjacent to the National Park to the west.

**Landscape sensitivity** high/medium

The susceptibility of the area lies in its high visibility on the steep hillsides which act as a strong backcloth to the north west of the town, its open unspoilt character. The value of the area lies in the adjacent National Park, to which it contributes a buffer and setting, the PROWs and National cycle route adjacent. The LANDMAP value is outstanding for cultural landscapes and high for historic landscapes.

Does the site or its attributes contribute to the Wellbeing and Future Generations Act Goals?

- a prosperous Wales
- a resilient Wales
- a healthy Wales
- a more equal Wales
- a Wales of cohesive communities
- a Wales of vibrant culture and thriving Welsh language

**LLCA CONTEXT**

**ILCA number** A06  
**ILCA sensitivity** High/medium  
**Relationship of site with ILCA** Part of the upper sloping hillside.

**LANDMAP CONTEXT**

**Geological landscapes**

<b>Number</b>	MNMTHGL015	MNMTHGL070
<b>Value</b>	Moderate	Low

**Landscape habitats**

<b>Number</b>	MNMTHLH098
<b>Value</b>	Moderate

**Visual and sensory**

<b>Number</b>	MNMTHVS051
<b>Value</b>	Moderate

**Historical landscapes**

<b>Number</b>	MNMTHHL033
<b>Value</b>	High

**Cultural landscapes**

<b>Number</b>	MNMTHCL033
<b>Value</b>	Outstanding

**Landscape Character Area**



**SUMMARY**

**Key characteristics**

Convex top to steep sided, enclosed valley comprising small-scale pasture/grassland.  
Bounded by strong riparian tree cover and deciduous woodland on the valley sides to the west and Cardiff to Manchester railway line and A465 to the east.  
Habitat connectivity on all boundaries.  
Visible to railway and road with some trees bounding the transport corridor.  
SINC in valley corridor adjacent.

**Landscape sensitivity** high/medium\* \*A standard methodology relating to housing development has been applied to all assessments. The suitability for other development such as employment has not been assessed at this stage.

The susceptibility of the site lies in its small scale and rural character and significant separation from the settlement by the intervening steep sided wooded valley with an attractive watercourse. It is also highly visible from the railway and development on the site would be noticeable from the A465 changing perception of the character of the landscape on the eastern edge of Abergavenny as it relates to the National Park. The value of the site lies in the SINC adjacent. LANDMAP value includes high for cultural landscapes.

Does the site or its attributes contribute to the Wellbeing and Future Generations Act Goals?

- a prosperous Wales
- a resilient Wales
- a healthy Wales
- a more equal Wales
- a Wales of cohesive communities
- a Wales of vibrant culture and thriving Welsh language

**LLCA CONTEXT**

**IICA number** A01  
**IICA sensitivity** High/medium  
**Relationship of site with IICA** Upper valley side pasture west of the River Gavenny.

**LANDMAP CONTEXT**

**Geological landscapes**  
**Number** MNMTHGL043  
**Value** Low

**Landscape habitats**  
**Number** MNMTHLH098  
**Value** Moderate

**Visual and sensory**  
**Number** MNMTHVS051  
**Value** Moderate

**Historical landscapes**  
**Number** MNMTHHL031  
**Value** Moderate

**Cultural landscapes**  
**Number** MNMTHCL029  
**Value** High



**SUMMARY**

**Key characteristics**

Convex top to steep sided, enclosed valley comprising small-scale pasture/grassland.  
Bounded by strong riparian tree cover and deciduous woodland on the valley sides to the west and Cardiff to Manchester railway line and A465 to the east.  
Habitat connectivity on all boundaries.  
Visible to railway and road with some trees bounding the transport corridor.  
SINC in valley corridor adjacent.

**Landscape sensitivity** high/medium

The susceptibility of the site lies in its small scale and rural character and significant separation from the settlement by the intervening steep sided wooded valley with an attractive watercourse. It is also highly visible from the railway and developmen on the site would be noticeable from the A465 changing perception of the character of the landscape on the eastern edge of Abergavenny as it relates to the National Park. The value of the site lies in the Cwm Mill SSSI on southern edge, and the SINC adjacent. LANDMAP value includes high for cultural landscapes.

Does the site or its attributes contribute to the Wellbeing and Future Generations Act Goals?

- a prosperous Wales
- a resilient Wales
- a healthy Wales
- a more equal Wales
- a Wales of cohesive communities
- a Wales of vibrant culture and thriving Welsh language

**LLCA CONTEXT**

**IICA number** A01  
**IICA sensitivity** High/medium  
**Relationship of site with IICA** Upper valley side pasture west of the River Gavenny.

**LANDMAP CONTEXT**

**Geological landscapes**

<b>Number</b>	MNMTHGL042	MNMTHGL043
<b>Value</b>	High	Low

**Landscape habitats**

<b>Number</b>	MNMTHLH098
<b>Value</b>	Moderate

**Visual and sensory**

<b>Number</b>	MNMTHVS051
<b>Value</b>	Moderate

**Historical landscapes**

<b>Number</b>	MNMTHHL031
<b>Value</b>	Moderate

**Cultural landscapes**

<b>Number</b>	MNMTHCL029
<b>Value</b>	High



**SUMMARY**

**Key characteristics**

Moderately steep sided, enclosed valley comprising small-scale pasture/grassland and part of the grounds of Mardy Park.

Bounded by strong riparian tree cover and deciduous woodland on the valley sides to the east and the settlement edge to the west.

Habitat connectivity along the river corridor.

SINC in valley corridor adjacent.

**Landscape sensitivity** medium\*

\*A standard methodology relating to housing development has been applied to all assessments. The suitability for other development such as employment has not been assessed at this stage.

The susceptibility of the site lies in its small scale and semi-rural character, its role as part of the attractive grounds of Mardy View, its location in a steep sided wooded valley with an attractive watercourse and habitat connectivity. The value of the site lies in the SINC adjacent. LANDMAP value includes outstanding for cultural landscapes. Housing would adversely impact on the function and attractiveness of Mardy Park grounds and may be apparent to the east. If implemented it should sensitively address Mardy Park housing to complement and respect the grounds and avoid adversely affecting the trees in the valley corridor.

Does the site or its attributes contribute to the Wellbeing and Future Generations Act Goals?

- a prosperous Wales
- a resilient Wales
- a healthy Wales
- a more equal Wales
- a Wales of cohesive communities
- a Wales of vibrant culture and thriving Welsh language

**LLCA CONTEXT**

**LLCA number** A01

**LLCA sensitivity** High/medium

**Relationship of site with LLCA** Valley side pasture by the settlement edge east of the River Gavenny.

**LANDMAP CONTEXT**

**Geological landscapes**

<b>Number</b>	MNMTHGL070	MNMTHGL043
<b>Value</b>	Low	Low

**Landscape habitats**

<b>Number</b>	MNMTHLH077
<b>Value</b>	Low

**Visual and sensory**

<b>Number</b>	MNMTHVS051
<b>Value</b>	Moderate

**Historical landscapes**

<b>Number</b>	MNMTHHL031
<b>Value</b>	Moderate

**Cultural landscapes**

<b>Number</b>	MNMTHCL032
<b>Value</b>	Outstanding





**SUMMARY**

**Key characteristics**

Maindiff Court Hospital appears as a series of scattered buildings within a very strong wooded parkland setting dominated by mature conifers with some deciduous trees.

It lies within a gently sloping valley side on the lower slopes of the Ysgryd Fawr and Ysgryd Fach.

Its surroundings are primarily agricultural and fairly open with arable rectilinear fields with a low cut hedges and fences and few trees.

Other settlement comprises of scattered rural farmhouses and dwellings.

Views are possible across the area towards the Ysgryd Fawr.

The Brecon Beacons National Park lies to the north east.

**Landscape sensitivity** medium\* \*A standard methodology relating to housing development has been applied to all assessments. The suitability for other development such as employment has not been assessed at this stage.

The susceptibility of the hospital grounds lies in its separation from Abergavenny by the A465 and railway line, its location within open countryside of rural character rising towards the Ysgryd Fawr and Ysgryd Fach, for which it acts as part of the setting. The strong parkland coniferous and deciduous tree cover effectively screens the majority of buildings from the rest of the area and need retention. This effectively screens or filters the majority of buildings from the rest of the area and would need retention. The value lies in part of the area being located close to the National Park and forming part of its setting and the SINC which covers the site. The LANDMAP value is outstanding for historic landscapes and cultural landscapes and high for geological landscapes for part of the area. The hospital might be an opportunity for very low density development but sensitive design and retention of the vast majority of trees and parkland character would be essential to maintain the overall character of the area.

Does the site or its attributes contribute to the Wellbeing and Future Generations Act Goals?

- a prosperous Wales
- a resilient Wales
- a healthy Wales
- a more equal Wales
- a Wales of cohesive communities
- a Wales of vibrant culture and thriving Welsh language

**LLCA CONTEXT**

**LLCA number** A02

**LLCA sensitivity** High/medium

**Relationship of site with LLCA** Maindiff Court Hospital and grounds form an area of distinct character from the rest of the rural land uses around it in Area A02.

**LANDMAP CONTEXT**

**Geological landscapes**

**Number** MNMTHGL042

**Value** High

**Landscape habitats**

**Number** MNMTHLH098

**Value** Moderate

**Visual and sensory**

**Number** MNMTHVS051

**Value** Moderate

**Historical landscapes**

**Number** MNMTHHL049

**Value** Outstanding

Cultural landscapes

**Number** MNMTHCL032

**Value** Outstanding

Landscape Character Area

**Number** A02 **also includes**

**DESIGNATIONS**

**National Park** AONB

Landscape designations comments  
close to National Park to the north east

**Landscape of Hist. interest** **Historic Parks and Gardens**

**Hist.Parks and Gardens essential setting**

**SAM** **Conservation Area** **Listed Building** **World Heritage Site**

**Historic / archaeology designations comments** Listed buildings at Maindiff Farm to the south west

**SAC** **NNR** **SINC** **Yes** **SSSI** **RAMSAR**

**Biodiversity designations comments** Maindiff Court Hospital SINC grasslands and parkland

**Other**

**Country Park** **National Trail** **National / Regional Cycle Route**

**SUMMARY**

**Key characteristics**

Lower valley slopes of River Usk valley falling from north to south with a scrape at low point.  
Regular field of pasture bounded by mix of boundaries from outgrown hedges to fences.  
Strong riparian tree cover and poplars, and wetland vegetation including willows around scrape.  
Bounded by new housing development at higher level to the west with unmanaged steep slopes.  
Area is not publicly accessible but the northern edge is viewed from Castle Meadows in conjunction with the river with views to the Bloreng, Ysgryd Fach and towards Sugar Loaf.  
The A465[T] and power lines nearby are detractors and reduce tranquillity.

**Landscape sensitivity** high/medium

The susceptibility of the area lies in being part of the rural pastoral character along the Usk river corridor, its scrape, its northern edge visibility from Castle Meadows and the older edge of Abergavenny including the castle on the other side of the river, as well as from the A465(T) on the approaches to the settlement, and its mature riparian vegetation, trees and hedgerows. Its value lies in part adjacent to the Conservation Area, nature conservation interest with adjacent River Usk SAC and SSSI, and its contribution to the setting of the town and Conservation Area. LANDMAP value is outstanding for cultural landscape, and high for visual & sensory and historic landscape. The adjacent housing on a former brownfield site is locally prominent to the north and south and development here would continue this effect but closer to sensitive receptors in Abergavenny and impinging on rural landscape and falling to the valley floor.

Does the site or its attributes contribute to the Wellbeing and Future Generations Act Goals?

- a prosperous Wales
- a resilient Wales
- a healthy Wales
- a more equal Wales
- a Wales of cohesive communities
- a Wales of vibrant culture and thriving Welsh language

**LLCA CONTEXT**

**ILCA number** A14

**ILCA sensitivity** High/medium

**Relationship of site with ILCA** Western edge of the area on mainly rising ground outside the floodplain

**LANDMAP CONTEXT**

**Geological landscapes**

**Number** MNMTHGL044

**Value** Moderate

**Landscape habitats**

**Number** MNMTHLH121

**Value** Moderate

**Visual and sensory**

**Number** MNMTHVS046 MNMTHVS099

**Value** High Low

**Historical landscapes**

**Number** MNMTHHL061

**Value** High

**Cultural landscapes**

**Number** MNMTHCL040

**Value** Outstanding

Landscape Character Area

**Number** A14 **also includes**

## DESIGNATIONS

**National Park** AONB

Landscape designations comments

-

**Landscape of Hist. interest** **Historic Parks and Gardens**

**Hist.Parks and Gardens essential setting**

**SAM** **Conservation Area** **Listed Building** **World Heritage Site**

**Historic / archaeology designations comments** Conservation Area beside river to the north

**SAC** **NNR** **SINC** **SSSI** **RAMSAR**

**Biodiversity designations comments** adjacent River Usk is a SAC and SSSI

## Other

**Country Park** **National Trail** **National / Regional Cycle Route**

**SUMMARY**

**Key characteristics**

Two sites on simple steep slopes rising up towards the Blorenges running south of the settlement.  
 Pastures with trees on field boundaries and road to the north.  
 Overlooked by the Monmouthshire and Brecon Canal.  
 Lying within the Blaenavon World Heritage Site, and near the National Park and Landscape of Outstanding Historic Interest.

**Landscape sensitivity** high

The site is divided into two separate locations. The susceptibility of the southern site lies in it forming part of distinctive prominent steep pastoral slopes leading up to the Blorenges hillside, forming an open site extending south of providing part of the setting to the settlement of Llanfoist, and overlooked by the Monmouthshire and Brecon Canal. The susceptibility of the northern site is that it extends the settlement up the slopes at right angles to, and out of character with, the settlement edge, adversely impinging on hedgerows and breaking up the continuum of the slopes. The value of both sites lies in being within the Blaenavon World Heritage Site, being overlooked by people within the National Park walking along the canal, and, the southern site lying adjacent to a PROW. LANDMAP value is high for visual & sensory, historic landscape, cultural landscape and geological landscape. Though a site has been permitted for housing lower land to the north west this is distinctly separate from the southern site which is set up above the road and forms part of the continuum of slopes rising up to the Blorenges. Housing here would extend an unsightly edge to the settlement.

Does the site or its attributes contribute to the Wellbeing and Future Generations Act Goals?

- a prosperous Wales   
  a resilient Wales   
  a healthy Wales   
  a more equal Wales  
 a Wales of cohesive communities   
  a Wales of vibrant culture and thriving Welsh language

**LLCA CONTEXT**

**LLCA number** A13

**LLCA sensitivity** High

**Relationship of site with LLCA** Two sites- southern one on lower slope on the edge of the settlement, one to north running up the slope

**LANDMAP CONTEXT**

**Geological landscapes**

<b>Number</b>	MNMTHGL045	MNMTHGL044
<b>Value</b>	High	Moderate

**Landscape habitats**

<b>Number</b>	MNMTHLH067	MNMTHLH122
<b>Value</b>	Moderate	Low

**Visual and sensory**

<b>Number</b>	MNMTHVS042	MNMTHVS099	MNMTHVS045
<b>Value</b>	High	Low	High

**Historical landscapes**

<b>Number</b>	MNMTHHL061
<b>Value</b>	High

**Cultural landscapes**

**Number** MNMTHCL047

**Value** High

**Landscape Character Area**

**Number** A13 **also includes**

**DESIGNATIONS**

**National Park** AONB

Landscape designations comments  
near National Park

**Landscape of Hist. interest** **Historic Parks and Gardens**

**Hist.Parks and Gardens essential setting**

**SAM** **Conservation Area** **Listed Building** **World Heritage Site** Yes

**Historic / archaeology designations comments** World Heritage Site

**SAC** **NNR** **SINC** **SSSI** **RAMSAR**

**Biodiversity designations comments** -

**Other**

**Country Park** **National Trail** **National / Regional Cycle Route**

**SUMMARY**

**Key characteristics**

Small scale area within undulating lower valley landforms with distinct slopes and ponds to the north west and south east.

Irregular fields and paddocks with outgrown hedges and trees and remnant orchard around rural Grove Farm complex. Part of the River Usk corridor enclosed by the hill slopes of the Blorengre to the south.

Grove Farm house is listed.

**Landscape sensitivity** high/medium\* \*A standard methodology relating to housing development has been applied to all assessments. The suitability for other development such as employment has not been assessed at this stage.

The susceptibility of the site lies in the rural character of the farm complex, the remnant orchard and substantial tree cover, the small scale of the paddocks on the wider contribution of the buildings to the valley character. The value of the area lies in the scenic qualities of the listed Grove Farm and the SINC south of Grove Farm. The LANDMAP value is high for visual and sensory, historic landscape and cultural landscape.

Does the site or its attributes contribute to the Wellbeing and Future Generations Act Goals?

- a prosperous Wales
- a resilient Wales
- a healthy Wales
- a more equal Wales
- a Wales of cohesive communities
- a Wales of vibrant culture and thriving Welsh language

**LLCA CONTEXT**

**LLCA number** A15

**LLCA sensitivity** Medium

**Relationship of site with LLCA** in low lying area just above floodplain

**LANDMAP CONTEXT**

**Geological landscapes**

**Number** MNMTHGL044

**Value** Moderate

**Landscape habitats**

**Number** MNMTHLH121

**Value** Moderate

**Visual and sensory**

**Number** MNMTHVS045

**Value** High

**Historical landscapes**

**Number** MNMTHHL061

**Value** High

**Cultural landscapes**

**Number** MNMTHCL047

**Value** High

**Landscape Character Area**

**Number** A15 **also includes**





**SUMMARY**

**Key characteristics**

Small scale undulating lower valley landforms with distinct slopes.  
 Pastoral landscape of an irregular field with outgrown hedges to the south and regenerating woodland and scrub to the north.  
 Main focus to the south is listed Grove Farm, with new settlement edge around the northern part.  
 Scrub and trees to the north help to integrate and mitigate the current settlement edge.  
 Southern field is separated from the scrub area to the north by a narrow neck of land with a mature field tree within it.  
 Southern edge to the southern site cuts across an open field.

**Landscape sensitivity** medium\* \*A standard methodology relating to housing development has been applied to all assessments. The suitability for other development such as employment has not been assessed at this stage.

The susceptibility of the sites lies in the current role as woodland and scrub helping to integrate the current settlement edge, the clear extension of the southern field into the landscape without any existing screening between this at a higher level and the listed building/farm complex to the south at a lower level, and the likely removal of positive tree cover in implementing any development. The value of the area lies in the scenic value of the small scale landforms enclosed by trees and hedges and listed Grove Farm to the south. The LANDMAP value is high for visual and sensory, historic landscape, cultural landscape and outstanding at the edge (River Usk) for landscape habitats. This area should only be developed if part of the field to the north is developed to make a more logical site and avoid removal of large trees, and if the area between the proposed development and the Grove Farm complex is planted up as a buffer and open space, optimising habitat connectivity.

Does the site or its attributes contribute to the Wellbeing and Future Generations Act Goals?

- a prosperous Wales   
  a resilient Wales   
  a healthy Wales   
  a more equal Wales  
 a Wales of cohesive communities   
  a Wales of vibrant culture and thriving Welsh language

**LLCA CONTEXT**

**LLCA number** A15  
**LLCA sensitivity** Medium  
**Relationship of site with LLCA** Two-part area- area of scrub partly enclosed by the settlement and half a field running from the settlement to the south east

**LANDMAP CONTEXT**

**Geological landscapes**

<b>Number</b>	MNMTHGL044	
<b>Value</b>	Moderate	

**Landscape habitats**

<b>Number</b>	MNMTHLH121	
<b>Value</b>	Moderate	

**Visual and sensory**

<b>Number</b>	MNMTHVS045	MNMTHVS099
<b>Value</b>	High	Low

**Historical landscapes**

<b>Number</b>	MNMTHHL061	
<b>Value</b>	High	

**Cultural landscapes**

**Number** MNMTHCL047

**Value** High

**Landscape Character Area**

**Number** A15 **also includes**

**DESIGNATIONS**

**National Park** AONB

Landscape designations comments

-

**Landscape of Hist. interest** **Historic Parks and Gardens**

**Hist.Parks and Gardens essential setting**

**SAM** **Conservation Area** **Listed Building** **World Heritage Site**

**Historic / archaeology designations comments** Grove Farm listed building to the south

**SAC** **NNR** **SINC** **SSSI** **RAMSAR**

**Biodiversity designations comments** -

**Other**

**Country Park** **National Trail** **National / Regional Cycle Route**

**SUMMARY**

**Key characteristics**

Small scale undulating lower valley landforms with distinct slopes (including a former tip) and waterbodies, with low lying floodplain along a watercourse separating higher areas

Pastoral/rough grass irregular fields poorly drained in parts, with outgrown hedges and trees in some hedgerows.

Part of the River Usk corridor enclosed by the hill slopes of the Bloreng to the south.

Northern part, especially the former tip, is prominent and exposed to view from the A465[T] which is a noise source and a detractor along with the power lines, waste recycling centre and current settlement edge with rough slopes and very limited mitigation adjacent.

**Landscape sensitivity** medium

The susceptibility of the area lies in the floodplain, the area's role as a setting to the River Usk and a buffer to the National Park forming a strong green corridor between Abergavenny and Llanfoist and the A465[T], the locally prominent steep sided landform of the tip, the waterbodies and strong hedgerows and pastures with associated biodiversity. The value of the area lies in the scenic value of the small scale landforms and waterbodies to the south and west enclosed by trees and hedges. The LANDMAP value is high for visual and sensory, historic landscape, cultural landscape and outstanding at the edge (River Usk) for landscape habitats. Development on the tip area would significantly and prominently extend the settlement of Llanfoist to the east. The eastern slopes on the small scale landforms should also be avoided. The only location which may be sufficiently discreet would be part of the field directly south west of the adjacent pond/area of amenity importance and extending no further east than it. This would allow integration by rising landform to the east, protection of the watercourse and minor valley further east still and allow full connection between the pond and the valley landscape to the east.

Does the site or its attributes contribute to the Wellbeing and Future Generations Act Goals?

- a prosperous Wales
- a resilient Wales
- a healthy Wales
- a more equal Wales
- a Wales of cohesive communities
- a Wales of vibrant culture and thriving Welsh language

**LLCA CONTEXT**

**LLCA number** A15

**LLCA sensitivity** Medium

**Relationship of site with LLCA** Comprises of raised landforms on the valley floor including tip separated by a low-lying tributary valley

**LANDMAP CONTEXT**

**Geological landscapes**

**Number** MNMTHGL040 MNMTHGL044

**Value** Moderate Moderate

**Landscape habitats**

**Number** MNMTHLH121

**Value** Moderate

**Visual and sensory**

**Number** MNMTHVS045

**Value** High

**Historical landscapes**

**Number** MNMTHHL061

**Value** High

Cultural landscapes

**Number** MNMTHCL047

**Value** High

Landscape Character Area

**Number** A15 **also includes**

## DESIGNATIONS

**National Park** AONB

Landscape designations comments

Area of amenity importance- low lying pond to the west

**Landscape of Hist. interest** **Historic Parks and Gardens**

**Hist.Parks and Gardens essential setting**

**SAM** **Conservation Area** **Listed Building** **World Heritage Site**

**Historic / archaeology designations comments** -

**SAC** **NNR** **SINC** **SSSI** **RAMSAR**

**Biodiversity designations comments** -

## Other

**Country Park** **National Trail** **National / Regional Cycle Route**