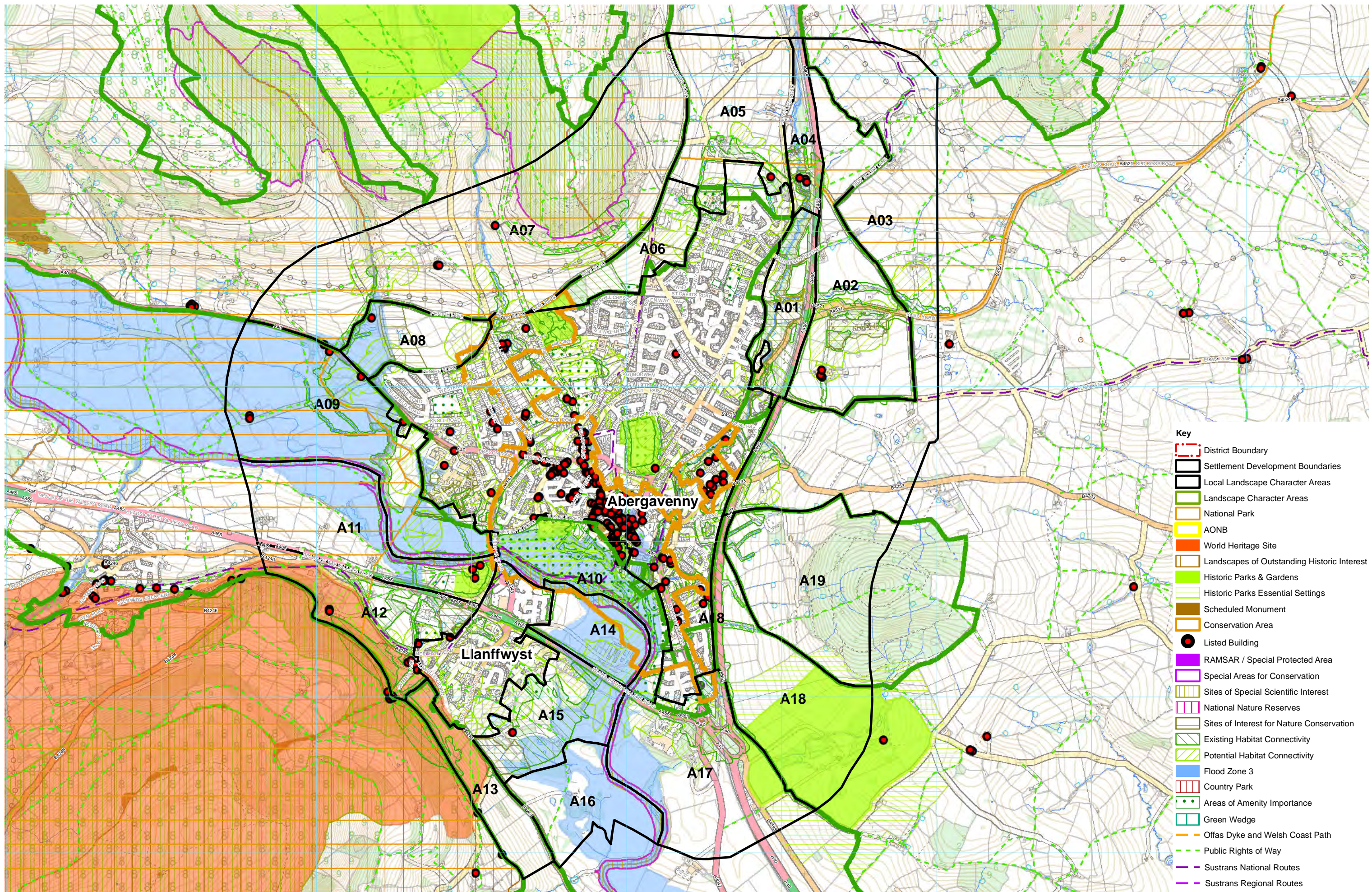


Abergavenny LLCAs



- Key**
- District Boundary
 - Settlement Development Boundaries
 - Local Landscape Character Areas
 - Landscape Character Areas
 - National Park
 - AONB
 - World Heritage Site
 - Landscapes of Outstanding Historic Interest
 - Historic Parks & Gardens
 - Historic Parks Essential Settings
 - Scheduled Monument
 - Conservation Area
 - Listed Building
 - Ramsar / Special Protected Area
 - Special Areas for Conservation
 - Sites of Special Scientific Interest
 - National Nature Reserves
 - Sites of Interest for Nature Conservation
 - Existing Habitat Connectivity
 - Potential Habitat Connectivity
 - Flood Zone 3
 - Country Park
 - Areas of Amenity Importance
 - Green Wedge
 - Offas Dyke and Welsh Coast Path
 - Public Rights of Way
 - Sustrans National Routes
 - Sustrans Regional Routes

0 0.5 1 2 Kilometres

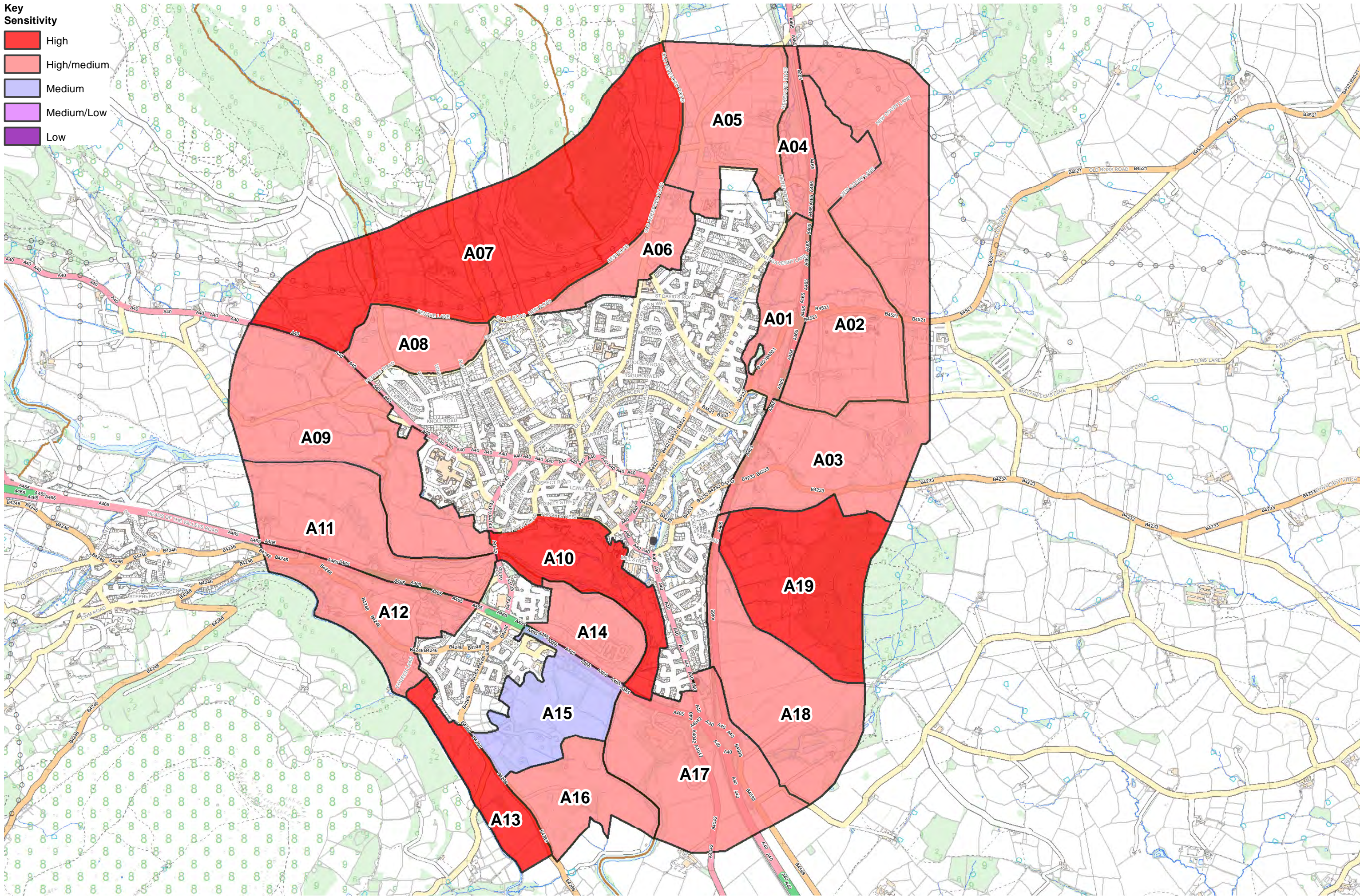


© Hawlfraint y Goron a hawliau cronfa ddata 2019 Arolwg Ordnans 100023415
 © Crown copyright and database rights 2019 Ordnance Survey 100023415
 www.whiteconsultants.co.uk

Project: Monmouthshire Landscape Sensitivity Study
 Client: Monmouthshire County Council
 Date: November 2019
 Status: Final

Settlement: Abergavenny

LLCA Constraints



0 0.25 0.5 1 Kilometres



© Hawlfraint y Goron a hawliau cronfa ddata 2019 Arolwg Ordnans 100023415
 © Crown copyright and database rights 2019 Ordnance Survey 100023415
 www.whiteconsultants.co.uk

Project: Monmouthshire Landscape Sensitivity Study
 Client: Monmouthshire County Council
 Date: November 2019
 Status: Final

Abergavenny
Landscape sensitivity of LLCAs

SUMMARY

Key characteristics

Steep sided, enclosed valley with convex tops to the east and small watercourse and limited flat valley bottom.

Bounded by settlement to the west and by Cardiff to Manchester railway line to the east.

Strong riparian tree cover and deciduous woodland on the valley sides.

Small-scale pastures on valley sides and bottom, some with horse grazing, and rough grass areas to the south.

Some Victorian terraces and isolated settlement in the valley bottom and remnants of previous industrial development.

Timber processing yard on defunct railway sidings to the east on high ground adjacent to the railway and some commercial development to the north.

Overlooked by housing to the west the limited views within the area which feels hidden and relatively tranquil considering its location.

Eastern upper fields visible to railway and road with some trees bounding the transport corridor.

Used for informal recreation in parts.

Cwm Mill SSSI on tributary of Gavenny River and SINC along valley floor- pasture and riparian corridor.

Landscape and visual sensitivity to housing High/Medium

The susceptibility of the area lies in its small scale mosaic of deciduous woodland and small-scale pasture in a steep sided valley with an attractive watercourse. It acts as a strong green buffer, corridor and setting for the indented eastern fringes of the settlement with habitat connectivity. It is also used for recreation by local residents where access is allowed. The value of the area lies in the Cwm Mill SSSI on the tributary of Gavenny River and SINC along valley floor- pasture and riparian corridor. LANDMAP value includes outstanding for cultural landscape and high for geological landscape for parts of the area. The timber yard area may have potential in the long term but it is isolated from the settlement may become a precedent the developing intervening pastures which are also separated from the settlement by the river corridor and visible from the transport corridors to the east.

Does the area or its attributes contribute to the Wellbeing and Future Generations Act Goals ?

- a prosperous Wales a resilient Wales a more equal Wales a globally responsible Wales
 a Wales of cohesive communities a Wales of vibrant culture and thriving Welsh Language a healthier Wales

VALUE

Landmap Context	Aspect area value	Aspect area value
Geological Landscapes	45% high, 55% low	Landscape Habitats 70% moderate, 30% low
Historical Landscapes	5% high, 95% moderate	Cultural Landscapes 70% outstanding, 30% high
Visual and Sensory	Moderate	

Designations

Landscape designations comments -

National Park AONB

Historic/archaeology designations comments -

Historic Parks and Gardens	Hist. Parks and Gardens Setting	Listed Building
Landscape of Hist. Interest	Scheduled Monument	Conservation Area
		WHS

Biodiversity designations comments Cwm Mill SSSI on tributary of Gavenny River. SINC along valley floor- pasture and riparian corridor.

SAC NNR SINC SSSI Yes RAMSAR

Recreation Factors

Country Park National Trail National/Regional Cycle Route

LANDSCAPE CHARACTER AND SUSCEPTIBILITY

Landscape Character Area

LCA Name Penyclawdd Watershed LCA Number 27 also part of

Characteristics

Landform steep small valley of the River Gavenny with convex upper slopes

Landcover pasture and rough pasture and rough land

Pattern

Settlement pattern small terraces relating to previous industrial or railway use and some industrial use

Woodland cover significant riparian woodland and deciduous trees on steep slopes

Boundaries small scale irregular pastures/grassland bounded by outgrown hedges and trees

Presence of water Gavenny River and tributaries

Diversity diverse Scale small

Sense of enclosure enclosed by valley sides and vegetation- intimate in places, with upper slopes to the east more open

Function of Area

Pastoral Arable Horticulture Recreation other

Comments pasture including for horses

Functional relationship and connectivity

...with wider landscape some ...with settlement some

...with adjacent assessed area? some Corridor?

Existing Habitat Connectivity Habitat Connectivity Opportunity

pastures appear to be managed as part of a wider landholding and there is a public footpath across the valley linking the settlement with the wider countryside to the east. The river and associated vegetation and rough grassland provide habitat connectivity.

Are adjacent assessed areas mutually reliant... ...visually? ...functionally

Comments -

PERCEPTUAL SUSCEPTIBILITY

Skyline

Prominence/importance prominent Complexity simple

Comments the valley edge is prominent in short range views from the valley floor, often with mature trees

Key views

To settlement -

From settlement -

Landmarks -

Detractors timber yard by railway, minor commercial sheds to north

Intervisibility

Site observation low ...to key features ...from key places

Comments valley generally enclosed with internal views although valley tops are visible both to the A465 to the east and also to the settlement to the west

Tranquillity

Noise sources roads people

Views of development many 270 Presence of people frequent

Summary medium

Comments the presence of settlement to the south and west along with the timber yard, road and railway reduce tranquillity but in places the vegetation screens development and makes the area feel tranquil in pockets

Settlement edge

Pre C20th edge C20-21st edge Nature of edge positive Form of edge highly indented

Comments the incremental settlement edge allows for established vegetation to generally integrate the small scale built form

Visual relationship and connectivity

...with settlement some ...with wider landscape limited ...with adjacent assessed area some

Setting

Comments the valley links in with valley to the north and upper slopes are visible to the the A465[T] road and railway

Receptors

urban residents

roads/rail/cycleways

long distance/public footpaths

Sensitivity

high/medium

high/medium

high

Comments settlement edge residents enjoy views of the valley, as do users of the minor access road. Users of the railway and A465[T] have glimpse views.

OTHER

Other factors -

Potential Improvements (if no development)

Protect and reinforce river corridor and associated vegetation and linking tree belts and outgrown hedges, maintain rough pasture to contribute to habitat connectivity

Mitigation (if development) -

SUMMARY

Key characteristics

Gently sloping valley side on the lower slopes of the Ysgyrd Fawr and Ysgyrd Fach traversed by minor tributary watercourses.

Bounded by open countryside to the east and by the A465 Hereford road to the west.

Mainly arable, rectilinear fields with a low cut hedges and fences and few trees apart from those associated with the watercourses and new roads and lanes.

Maindiff Court Hospital appears as a series of scattered buildings within a strong wooded parkland setting dominated by mature conifers with some deciduous trees.

Other settlement comprises of scattered rural farmhouses and dwellings, with expanded semi-agricultural buildings around Maindiff Farm.

Views are possible across the area towards the Ysgyrd Fawr.

Part of the area to the north is within the National Park.

Listed buildings at Maindiff Farm and New Court Farm.

Maindiff Hospital grassland and parkland SINC

Landscape and visual sensitivity to housing High/Medium

The susceptibility of the area lies in its strong separation from Abergavenny by the A465 and railway line, its character as open countryside rising towards Ysgyrd Fawr and Ysgyrd Fach, for which it acts as part of the setting. The hospital grounds are of different character from the rest of the area with a strong coniferous tree cover. This effectively screens or filters the majority of buildings from the rest of the area and would need retention. The value lies in part of the area being located in the National Park and the listed buildings at Maindiff Farm and New Court Farm and the grassland and parkland SINC. The LANDMAP value is partly outstanding for cultural landscape and historic landscape and high for geological landscape for part of the area. The hospital might be an opportunity for very low density development but sensitive design and retention of the vast majority of trees and parkland character with associated nature conservation value would be essential to maintain the overall character of the area.

Does the area or its attributes contribute to the Wellbeing and Future Generations Act Goals ?

- a prosperous Wales a resilient Wales a more equal Wales a globally responsible Wales
 a Wales of cohesive communities a Wales of vibrant culture and thriving Welsh Language a healthier Wales

VALUE

Landmap Context	Aspect area value	Aspect area value
Geological Landscapes	80% high, 20% moderate	Landscape Habitats Moderate
Historical Landscapes	50% outstanding, 50% high	Cultural Landscapes 25% outstanding, 75% high
Visual and Sensory	Moderate	

Designations

Landscape designations comments	National Park covers northern part of the area		
National Park	Yes	AONB	
Historic/archaeology designations comments	listed buildings at Maindiff Farm and New Court Farm		
Historic Parks and Gardens	Hist. Parks and Gardens Setting	Listed Building	Yes
Landscape of Hist. Interest	Scheduled Monument	Conservation Area	WHS
Biodiversity designations comments	Maindiff Hospital grassland and parkland SINC		
SAC	NNR	SINC	SSSI RAMSAR

Recreation Factors

Country Park	National Trail	National/Regional Cycle Route	Yes
--------------	----------------	-------------------------------	-----

LANDSCAPE CHARACTER AND SUSCEPTIBILITY

Landscape Character Area

LCA Name Penyclawdd Watershed LCA Number 27 also part of

Characteristics

Landform gently sloping valley side on the lower slopes of the Ysgyryd Fawr and Ysgyryd Fach traversed by minor tributary watercourses.

Landcover arable and hospital

Pattern

Settlement pattern scattered farmsteads and dwellings with hospital set in grounds

Woodland cover strong block of mixed parkland trees associated with hospital but there are also trees associated with watercourses, roads and lanes.

Boundaries regular medium-sized fields with a low cut hedges and fences

 Presence of water tributary of Gavenny River

Diversity diverse Scale medium

Sense of enclosure moderately open

Function of Area

Pastoral Arable Horticulture Recreation other

Comments arable with some pastoral

Functional relationship and connectivity

...with wider landscape some ...with settlement some

...with adjacent assessed area? some Corridor? Existing Habitat Connectivity Habitat Connectivity Opportunity

the area appears to be managed as part of a wider landholding to the south and east, there is habitat connectivity along the watercourse and public footpaths run through the area linking the settlement with the wider countryside to the east

Are adjacent assessed areas mutually reliant... ... visually? ...functionally

Comments -

PERCEPTUAL SUSCEPTIBILITY

Skyline

Prominence/importance local skyline to Complexity simple

Comments -

Key views

To settlement -From settlement forms lower part of rising backcloth to settlement to the east

Landmarks Ysgyryd Fawr to north east

Detractors -

Intervisibility

Site observation medium ...to key features ...from key places

Comments area intervisible with Ysgyryd Fawr and A465 [T]

Tranquillity

Noise sources roads

Views of development some Presence of people frequent

Summary medium

Comments the A465[T] and traffic to the hospital reduce tranquillity

Settlement edge

Pre C20th edge C20-21st edge Nature of edge Form of edge

Comments n/a

Visual relationship and connectivity

...with settlement limited ...with wider landscape some ...with adjacent assessed area some

Setting

Comments the area acts as part of the eastern backcloth to the settlement albeit on lower slopes and is separated from it by the A465 and railway corridors

Receptors

rural residents

roads/rail/cycleways

long distance/public footpaths

viewpoints

Sensitivity

high

high

high/medium

high

Comments the area is overlooked by visitors to Ysgryd Fawr, users of public footpaths and roads including the A465[T] and by rural residents in and adjacent to the area

OTHER

Other factors -

Potential Improvements (if no development)

reinforce the riparian corridor, increase native hedge and tree planting around and to the south of Maindiff hospital, integrating the semi-agricultural buildings into the wider landscape and improving habitat connectivity

Mitigation (if development) -

SUMMARY

Key characteristics

Sloping hill and valley sides on the lower slopes of the Ysgryd Fawr and Ysgryd Fach traversed by minor tributary watercourses.

Bounded by open countryside to the east and by the A465 Hereford road to the west.

Mainly arable, regular fields with some irregular fields with pasture to the north and east.

Trees are associated with large house set in parkland, lanes, watercourses, some field boundaries and a recent golf course.

Settlement comprises of a large house to the south and scattered rural farmhouses and dwellings.

Views are possible across the area towards the Ysgryd Fawr and Ysgryd Fach.

Part of the area to the north is within the National Park.

Landscape and visual sensitivity to housing High/Medium

The susceptibility of the area lies in its open rural character forming the lower slopes of the landmark hills of Ysgryd Fawr and Ysgryd Fach, clear separation of the area from the settlement by the A465 and railway line, the presence of several footpaths and a regional cycle route, and the historic house at Tredilion Park with parkland trees. Its value is in its designation in part within the National Park, listed buildings, PROWs and regional cycle route. LANDMAP value is partly outstanding for historic landscape, and high for cultural landscape and geological landscape.

Does the area or its attributes contribute to the Wellbeing and Future Generations Act Goals ?

- a prosperous Wales a resilient Wales a more equal Wales a globally responsible Wales
 a Wales of cohesive communities a Wales of vibrant culture and thriving Welsh Language a healthier Wales

VALUE

Landmap Context Aspect area value Aspect area value

Geological Landscapes 95% high, 5% low Landscape Habitats Moderate

Historical Landscapes 50% outstanding, 50% high Cultural Landscapes High

Visual and Sensory Moderate

Designations

Landscape designations comments around half of the area to the north is National Park

National Park Yes AONB

Historic/archaeology designations comments listed buildings at Newcourt Farm and Wern Ddu farm (to the east)

Historic Parks and Gardens Hist. Parks and Gardens Setting Listed Building

Landscape of Hist. Interest Scheduled Monument Conservation Area WHS

Biodiversity designations comments -

SAC NNR SINC SSSI RAMSAR

Recreation Factors

Country Park National Trail National/Regional Cycle Route Yes

LANDSCAPE CHARACTER AND SUSCEPTIBILITY

Landscape Character Area

LCA Name Northern Hills LCA Number 26 also part of 0 0

Characteristics

Landform sloping hill and valley sides on the lower slopes of the Ysgryd Fawr and Ysgryd Fach traversed by minor tributary watercourses

Landcover mainly arable with pasture to the north and east

Pattern

Settlement pattern settlement comprises a large house (Tredilion Park) and scattered rural farmhouses

and dwellings

Woodland cover trees are associated with large houses set in parkland, lanes, watercourses, some field boundaries and a recent golf course

Boundaries mainly regular fields with some irregular fields

Presence of water small watercourse

Diversity simple Scale medium

Sense of enclosure moderately open

Function of Area

Pastoral Arable Horticulture Recreation other

Comments pasture and arable

Functional relationship and connectivity

...with wider landscape some ...with settlement limited

...with adjacent assessed area? some Corridor?

Existing Habitat Connectivity Habitat Connectivity Opportunity

the area appears to be managed as part of wider landholdings; existing and potential habitat connectivity in woodlands blocks and along watercourse connecting to A465 and Gavenny corridor; has PROWs and regional cycle route

Are adjacent assessed areas mutually reliant... ... visually? ...functionally

Comments -

PERCEPTUAL SUSCEPTIBILITY

Skyline

Prominence/importance apparent Complexity simple

Comments the south eastern part of the site acts as local skyline in views from A465

Key views

To settlement -

From settlement forms lower part of rising backcloth to settlement to the east

Landmarks Ysgryd Fawr to north east and Ysgyrd Fach to the south east

Detractors wireless mast to the south

Intervisibility

Site observation medium ...to key features ...from key places

Comments area intervisible with Ysgryd Fawr

Tranquillity

Noise sources roads

Views of development some Presence of people infrequent

Summary medium

Comments traffic on the A465 reduces tranquillity

Settlement edge

Pre C20th edge C20-21st edge Nature of edge neutral Form of edge smooth/linear

Comments settlement edge beyond A465[T] and railway and partially screened

Visual relationship and connectivity

...with settlement limited ...with wider landscape some ...with adjacent assessed area some

Setting

Comments the area acts as part of the eastern backcloth to the settlement albeit on lower slopes

LLCA A03 Settlement: Abergavenny

Receptors	Sensitivity
viewpoints	high
rural residents	high
long distance/public footpaths	high
roads/rail/cycleways	medium

Comments the area is overlooked by visitors to Ysgryd Fawr, users of public footpaths and roads including the A465[T] and by rural residents in and adjacent to the area

OTHER

Other factors -

Potential Improvements (if no development) strengthen hedgerows and native vegetation along watercourses

Mitigation (if development) -

SUMMARY

Key characteristics

Small, enclosed valley of the River Gavenny and floodplain.

Bounded by rising open countryside to the west and by Cardiff to Manchester railway line to the east.

Strong riparian tree cover and deciduous woodland on the valley sides.

Small-scale pastures, some ungrazed, on valley sides.

Small rural settlement of Llantilio Pertholey with its listed buildings including church with a stone tower in the valley bottom and new housing development on plant nursery site to the north.

Recent construction activities have also removed hedgerows in places but intrinsic character of the area remains intact.

Area north of the settlement is within the National Park.

Landscape and visual sensitivity to housing High/Medium

The susceptibility of the area lies in its character as an attractive mosaic of deciduous woodland and small-scale pastures in a small valley with an attractive watercourse, all contributing to habitat connectivity. The area acts as a setting for the Church and other traditional buildings in Llantilio Pertholey and maintains a separating buffer with the expanded settlement to the south west. The value of the area lies in the listed buildings in Llantilio Pertholey, the northern two thirds of the area lying within the National Park and the PROWs through the area. The LANDMAP value is high for cultural landscape and historic landscape.

Does the area or its attributes contribute to the Wellbeing and Future Generations Act Goals ?

- a prosperous Wales a resilient Wales a more equal Wales a globally responsible Wales
 a Wales of cohesive communities a Wales of vibrant culture and thriving Welsh Language a healthier Wales

VALUE

Landmap Context	Aspect area value	Aspect area value
Geological Landscapes	50% moderate, 50% low	Landscape Habitats Moderate
Historical Landscapes	High	Cultural Landscapes High
Visual and Sensory	Moderate	
Designations		
Landscape designations comments	most of the area to the north is in National Park	
National Park	Yes	AONB
Historic/archaeology designations comments	listed buildings at Llantilio Pertholey including church of St Teilo	
Historic Parks and Gardens	Hist. Parks and Gardens Setting	Listed Building Yes
Landscape of Hist. Interest	Scheduled Monument	Conservation Area WHS
Biodiversity designations comments	-	
SAC	NNR	SINC
	SSSI	RAMSAR
Recreation Factors		
Country Park	National Trail	National/Regional Cycle Route Yes

LANDSCAPE CHARACTER AND SUSCEPTIBILITY

Landscape Character Area

LCA Name Penyclawdd Watershed LCA Number 27 also part of

Characteristics

Landform small, enclosed valley of the River Gavenny and floodplain.

Landcover pasture

Pattern

Settlement pattern cluster at Llantilio Pertholey

Woodland cover strong riparian tree cover and deciduous woodland on the valley sides

Boundaries small-scale irregular pastures, some ungrazed, on valley sides

Presence of water River Gavenny

Diversity simple Scale small

Sense of enclosure enclosed and intimate

Function of Area

Pastoral Arable Horticulture Recreation other

Comments pasture

Functional relationship and connectivity

...with wider landscape some ...with settlement limited

...with adjacent assessed area? some Corridor?

Existing Habitat Connectivity Habitat Connectivity Opportunity

pastures appear to be managed as part of wider landholdings. The river and associated vegetation form part of a habitat network.

Are adjacent assessed areas mutually reliant... ...visually? ...functionally

Comments -

PERCEPTUAL SUSCEPTIBILITY

Skyline

Prominence/importance apparent Complexity simple

Comments valley edges are skyline when viewed from valley floor

Key views

To settlement key views only to Llantilio Pertholey, St Teilo church

From settlement view from churchyard to valley sides

Landmarks St Teilo church

Detractors one Llantilio Pertholey dwelling and associated land management

Intervisibility

Site observation low ...to key features ...from key places

Comments valley generally enclosed with internal views although valley tops are visible

Tranquillity

Noise sources roads

Views of development some Presence of people infrequent

Summary medium

Comments the presence of the roads and railway reduce tranquillity but the area overall is essentially rural

Settlement edge

Pre C20th edge C20-21st edge Nature of edge negative Form of edge smooth/linear

Comments new development to the south west in elevated location and removing roadside hedge is a locally prominent detractor

Visual relationship and connectivity

...with settlement limited ...with wider landscape some ...with adjacent assessed area some

Setting

Comments the valley links in with valley to the north and south and upper slopes are visible to the the A465[T] road and railway. The area acts as setting to St Teilo church and other listed buildings.

Receptors

rural residents

Sensitivity

high

LLCA A04 Settlement: Abergavenny

roads/rail/cycleways high

long distance/public footpaths high

Comments Llantilio Pertholey residents enjoy views of the valley, as do users of the minor access road. Users of the railway and A465[T] have glimpse views.

OTHER

Other factors -

Potential Improvements (if no development) reinforce river corridor with associated riparian vegetation and meadows, and reinstate hedgerows removed including trees.

Mitigation (if development) -

SUMMARY

Key characteristics

Sloping valley sides rising towards Deri and the foothills of the Black Mountains crossed by minor tributary watercourses.

Bounded by settlement to the south and open countryside in other directions.

A mix of small to medium regular and irregular pastoral fields.

Trees are associated with some outgrowing hedges to the south, on riparian corridors and with settlement including Ty Gwyn Hall.

Ty Gwyn Hall has significant associated mature coniferous as well as deciduous trees in its grounds, to the south in particular, and as an institution, is slightly suburbanised by lighting.

Other settlement comprises of scattered rural farmhouses and dwellings.

The settlement edge is recently expanded north to Ty Gwyn Hall at a lower level with pylons and power lines close to the edge.

Llantilio Pertholey primary school provides a soft treed edge to the settlement to the south west.

Views are possible across the area to and from the Ysgryd Fawr and Black Mountains.

The majority of the area to the north is within the National Park while south of Ty Gwyn Hall it is not.

Landscape and visual sensitivity to housing High/Medium

The susceptibility of the area lies in its character as open distinctly sloping countryside of rural character between the Black Mountains and Ysgryd Fawr, an important outlying hill. It therefore contributes to the setting of, and is overlooked by, these elements within the Brecon Beacons National Park. At a more detailed level the setting of Ty Gwyn Hall and St Teilo House are a consideration. The trees in these properties and the associated lane offer habitat connectivity and help to contain the recently expanded settlement along with vegetation in Llantilio Pertholey school grounds. Rising land to the west of the recently expanded development is susceptible due to its distinct slopes which would make housing more apparent in the wider landscape. The value of the area lies in its location largely within the Brecon Beacons National Park and Teilo House listed building. The LANDMAP value is high for cultural landscape and historic landscape.

Does the area or its attributes contribute to the Wellbeing and Future Generations Act Goals ?

- a prosperous Wales a resilient Wales a more equal Wales a globally responsible Wales
 a Wales of cohesive communities a Wales of vibrant culture and thriving Welsh Language a healthier Wales

VALUE

Landmap Context	Aspect area value	Aspect area value
Geological Landscapes	Moderate	Landscape Habitats Moderate
Historical Landscapes	High	Cultural Landscapes High
Visual and Sensory	Moderate	
Designations		
Landscape designations comments	National Park covers the majority of the northern part of the area	
National Park	Yes	AONB
Historic/archaeology designations comments	listed building at St Teilo House	
Historic Parks and Gardens	Hist. Parks and Gardens Setting	Listed Building Yes
Landscape of Hist. Interest	Scheduled Monument	Conservation Area WHS
Biodiversity designations comments	-	
SAC	NNR	SINC SSSI RAMSAR
Recreation Factors		
Country Park	National Trail	National/Regional Cycle Route Yes

LANDSCAPE CHARACTER AND SUSCEPTIBILITY

Landscape Character Area

LCA Name Penyclawdd Watershed LCA Number 27 also part of

Characteristics

Landform sloping valley sides rising west towards Deri and the foothills of the Black Mountains

Landcover pasture

Pattern

Settlement pattern dispersed rural dwellings and farmsteads with one large house

Woodland cover trees are associated with some hedges to the south, on riparian corridors and with settlement including Ty Gwyn Hall.

Boundaries a mix of small to medium regular and irregular pastoral fields with some outgrown hedges

Presence of water small tributary to the Gavenny River

Diversity simple Scale medium

Sense of enclosure open to the north and more enclosed to the south

Function of Area

Pastoral Arable Horticulture Recreation other

Comments pasture

Functional relationship and connectivity

...with wider landscape some ...with settlement some

...with adjacent assessed area? some Corridor?

Existing Habitat Connectivity Habitat Connectivity Opportunity

the area appears to be managed as part of wider landholdings to the north, there is habitats connectivity provided by woodland associated with Ty Gwyn Hall grounds and the lane to the south east, and there are public rights of way which link into the adjacent settlement

Are adjacent assessed areas mutually reliant... ...visually? ...functionally

Comments -

PERCEPTUAL SUSCEPTIBILITY

Skyline

Prominence/importance apparent Complexity complex

Comments the eastern edge of the area is on the immediate skyline of the adjacent Gavenny valley and the church at Llantilio Pertholey

Key views

To settlement views from Ysgryd Fawr towards settlement are across area

From settlement views from the church at Llantilio Pertholey towards the eastern edge

Landmarks Ty Gwyn Hall is noticeable in views from the east

Detractors -

Intervisibility

Site observation medium ...to key features ...from key places

Comments area intervisible with Ysgryd Fawr and hill slopes of Deri to west

Tranquillity

Noise sources roads

Views of development one side 180 Presence of people infrequent

Summary high/medium

Comments the A465 to the east is audible and views of development to the south and power lines reduce tranquillity

Settlement edge

Pre C20th edge C20-21st edge Nature of edge neutral Form of edge smooth/linear

Comments new development is being constructed at a lower level up to the lane on the southern edge of Ty Gwyn Hall with its associated tree cover and so reaches a logical boundary to the north and also to the west where there is a containing slope and strong hedge boundary. Llantilio Pertholey primary school provides a soft treed edge to the settlement to the south west.

Visual relationship and connectivity

...with settlement some ...with wider landscape some ...with adjacent assessed area some

Setting

Comments the area to the south links visually with the settlement but is generally screened by the vegetation at Ty Gwyn Hall which means the area to the north of this feels part of the wider countryside running north between Ysgyryd Fawr and the Sugar Loaf foothills

Receptors

Sensitivity

rural residents

high

urban residents

high

viewpoints

high

long distance/public footpaths

high

Comments the area is overlooked by visitors to Ysgyryd Fawr and users of paths running through the area as well as by rural residents and residents on the settlement edge to the south. In addition, users of the railway to the east overlook the area.

OTHER

Other factors -

Potential Improvements (if no development)

reinforce hedges with trees to link into the woodland and trees around Ty Gwyn Hall and subsequently to the valley corridor to the east

Mitigation (if development) -

SUMMARY

Key characteristics

Part of a steeply sloping hillside rising up from Abergavenny to the Sugar Loaf complex of hills, reducing in height to the south west.

Predominantly a pastoral landscape of fields with low-cut hedgerows and occasional mature trees.

A sub-station is a detractor with power lines to the west.

The settlement edge is relatively new and slightly prominent to the south.

The area forms part of the hillside setting to the town to the north west and is visible from the National Park to the east such as from Ysgryd Fawr and from the west.

Paddocks to the south west are overgrown with tree/scrub cover and are of a different character to the rest of the area and also lower down the slopes.

Part of area to south west is wooded and forms part of former The Hill centre's grounds which are now developed for low density housing.

The former Hill education centre and grounds to the south west is in the Conservation Area.

The area directly abuts the National Park to the west with Deri Road as the boundary.

The grassland SINC.

Landscape and visual sensitivity to housing High/Medium

The susceptibility of the area lies in its high visibility on the steep hillsides which act as a strong backcloth to the north west of the town, its open character to the north east, and the positive wooded/scrub character to the south west which encloses the built form on the lower slopes and offers habitat connectivity. The detractors of the substation and powerlines do not disrupt this green backcloth significantly. The value of the area lies in the adjacent National Park, to which it contributes a buffer and setting, the Conservation Area around the former Hill centre (a historic park and garden) to the south west, the grassland SINC and the PROWs and National cycle route through the area. The LANDMAP value is high for cultural landscape and historic landscape for the majority of the area. The lower wooded slopes may be able to accommodate a small amount of low density housing at the lowest level but the vast majority of the tree cover should be retained as a buffer between the town and the National Park.

Does the area or its attributes contribute to the Wellbeing and Future Generations Act Goals ?

- a prosperous Wales a resilient Wales a more equal Wales a globally responsible Wales
 a Wales of cohesive communities a Wales of vibrant culture and thriving Welsh Language a healthier Wales

VALUE

Landmap Context	Aspect area value	Aspect area value
Geological Landscapes	Moderate	Landscape Habitats 85% moderate, 15% low
Historical Landscapes	95% high, 5% moderate	Cultural Landscapes 90% high, 20% outstanding
Visual and Sensory	Moderate	

Designations

Landscape designations comments directly adjacent to National Park

National Park Yes AONB

Historic/archaeology designations comments south western part in Conservation Area, former The Hill-historic park and garden

Historic Parks and Gardens	Hist. Parks and Gardens Setting	Listed Building
Landscape of Hist. Interest	Scheduled Monument	Conservation Area Yes WHS

Biodiversity designations comments	grassland SINC
SAC	SSSI
NNR	RAMSAR
SINC	

Recreation Factors

Country Park National Trail National/Regional Cycle Route Yes

LANDSCAPE CHARACTER AND SUSCEPTIBILITY

Landscape Character Area

LCA Name Penyclawdd Watershed LCA Number 27 also part of

Characteristics

Landform steep hillside falling from north west to south east and also falling from north to south

Landcover pasture with hedges except for south western corner which is regenerating tree and scrub cover and some rough grass

Pattern

Settlement pattern scattered rural with substation

Woodland cover regenerating woodland/scrub and a few trees in low-cut hedges

Boundaries generally low-cut hedges, overgrown to the south west

Presence of water -

Diversity simple Scale small to medium scale

Sense of enclosure open with increased enclosure to south west

Function of Area

Pastoral Arable Horticulture Recreation other

Comments pasture, regenerating woodland/scrub and play area

Functional relationship and connectivity

...with wider landscape some ...with settlement some

...with adjacent assessed area? some Corridor?

Existing Habitat Connectivity Habitat Connectivity Opportunity

the area appears to be managed as part of larger landholdings which may extend to the north and west, there is habitat connectivity in the regenerating woodland to the south west and associated with the school to the north east and there are public rights of way crossing it including those up the hill into the National Park

Are adjacent assessed areas mutually reliant... ... visually? ...functionally

Comments -

PERCEPTUAL SUSCEPTIBILITY

Skyline

Prominence/importance apparent Complexity simple

Comments new development in this area may form a skyline from close views from the south east

Key views

To settlement views across settlement from the National Park to the east and west perceive the area as a hillside setting

From settlement -

Landmarks -

Detractors -

Intervisibility

Site observation high ...to key features ...from key places

Comments to and from the National Park{

Tranquillity

Noise sources people roads

Views of development one side 180 Presence of people infrequent

Summary medium

Comments the settlement is clearly visible to the south west and pylons and sub-station reduce tranquillity although the area feels quiet as part of the rural hillside

Settlement edge

Pre C20th edge C20-21st edge Nature of edge negative Form of edge moderately indented

Comments relatively new estates and a school about the area climbing the hill. These are raw in parts particularly to the south and west.

Visual relationship and connectivity

...with settlement some ...with wider landscape significant ...with adjacent assessed area significant

Setting

Comments the area forms part of the rural hillside rising to the north-west of Abergavenny providing part of the settlement setting

Receptors

Sensitivity

rural residents

high

urban residents

high

long distance/public footpaths

high

viewpoints

high

Comments the area is visible from rural residents within the National Park who overlook the area, from adjacent residents, from public footpath which cross the area, and from viewpoints within the national park including Ysgryd Fawr which is at a distance

OTHER

Other factors sub-station is a detractor. Former college to the south west with strong tree cover now developed with low density housing in trees and grassland

Potential Improvements (if no development)

Manage regenerating scrub/woodland to optimise biodiversity and maintain connection with parkland to the south west, reinforce hedgerows with trees to link to wider woodlands up the hill to Deri to the west.

Mitigation (if development) -

SUMMARY

Key characteristics

Part of a steeply sloping hillside ultimately running up to the Sugar Loaf

Predominantly a pastoral landscape of fields with low-cut hedgerows with few associated trees.

Woodland forms a prominent feature on the upper hillside- Sugar Loaf Woodlands and is associated with parkland and riparian locations.

The adjacent settlement edge is well established and integrated.

The area is part of the National Park and forms part of the hillside setting to the town to the north west and is visible from the National Park to the east such as from Ysgryd Fawr, from the south and from the west.

Landscape and visual sensitivity to housing High

The susceptibility of the area lies in its location and high visibility on the steep hillsides to the north west of the town, under the Sugar Loaf, with areas of diverse habitat and large woodlands, with pasture on the lower slopes and intimate lanes and footpaths. Its value is in its designation in the National Park, Sugar Loaf woodlands which have SAC and SSSI status, listed buildings including Llwyndu Court, accessibility with PROWs and adjacent to a regional cycle route, and its role as a tranquil rural buffer containing the settlement at Mardy. LANDMAP value is high for visual & sensory, cultural landscape and historic landscape aspects.

Does the area or its attributes contribute to the Wellbeing and Future Generations Act Goals ?

- a prosperous Wales a resilient Wales a more equal Wales a globally responsible Wales
 a Wales of cohesive communities a Wales of vibrant culture and thriving Welsh Language a healthier Wales

VALUE

Landmap Context	Aspect area value	Aspect area value
Geological Landscapes	75% moderate, 25% high	Landscape Habitats 20% high, 80% moderate
Historical Landscapes	High	Cultural Landscapes High
Visual and Sensory	High	

Designations

Landscape designations comments all within National Park

National Park Yes AONB

Historic/archaeology designations comments listed buildings including Llwyndu Court

Historic Parks and Gardens Hist. Parks and Gardens Setting Listed Building Yes

Landscape of Hist. Interest Scheduled Monument Conservation Area Yes WHS

Biodiversity designations comments Sugar Loaf woodlands- SAC and SSSI

SAC Yes NNR SINC SSSI Yes RAMSAR

Recreation Factors

Country Park National Trail National/Regional Cycle Route Yes

LANDSCAPE CHARACTER AND SUSCEPTIBILITY

Landscape Character Area

LCA Name Sugar Loaf Scarps LCA Number 30 also part of

Characteristics

Landform steeply sloping hillside running up towards the Sugar Loaf

Landcover pasture on lower slopes with woodland and bracken on higher slopes

Pattern

Settlement pattern scattered rural farmsteads and dwelling

Woodland cover Sugar Loaf woodland, around Llwyndu Court and riparian vegetation along small watercourse

Boundaries generally low-cut thorn hedges with few trees

Presence of water small watercourses running off the hill

Diversity diverse Scale small-medium

Sense of enclosure open

Function of Area

Pastoral Arable Horticulture Recreation other

Comments pasture and woodland

Functional relationship and connectivity

...with wider landscape significant ...with settlement some

...with adjacent assessed area? some Corridor?

Existing Habitat Connectivity Habitat Connectivity Opportunity

the area includes landholdings which appear to extend to the north and west and has public footpaths running through it linking the settlement with the Sugar Loaf, and adjacent to a regional cycle route; existing habitat connectivity occurs on lower slopes field boundaries and along watercourse

Are adjacent assessed areas mutually reliant... ...visually? ...functionally

Comments -

PERCEPTUAL SUSCEPTIBILITY

Skyline

Prominence/importance apparent Complexity simple

Comments structures on the area could form the skyline in local views when viewed from lower down the hill

Key views

To settlement views across settlement from the National Park to the south, east and west perceive the area as a hillside setting

From settlement -

Landmarks Sugar Loaf

Detractors pylons and sub station adjacent

Intervisibility

Site observation high ...to key features ...from key places

Comments seen as part of the lower hill slopes leading up to the Sugar Loaf

Tranquillity

Noise sources people roads

Views of development one side 180 Presence of people infrequent

Summary high/medium

Comments the area is intrinsically rural in character increasing in tranquillity away from the settlement edge although roads and the settlement are visible from the area

Settlement edge

Pre C20th edge C20-21st edge Nature of edge positive Form of edge moderately indented

Comments the edge consists of a few large properties with walls and mature vegetation

Visual relationship and connectivity

...with settlement significant ...with wider landscape significant ...with adjacent assessed area significant

Setting

Comments these hillside slopes act as important setting to the settlement

Receptors

rural residents

Sensitivity

high

LLCA A07 Settlement: Abergavenny

urban residents high

long distance/public footpaths high

viewpoints high

Comments the area is visible from rural residents within the national park who overlook the area, from adjacent residents, from public footpath which cross the area, and from viewpoints within the National Park including Ysgyryd Fawr which is at a distance

OTHER

Other factors pylons and powerlines are detractors although are recessive when viewed at a distance

Potential Improvements (if no development) -

Mitigation (if development) -

SUMMARY

Key characteristics

Part of a sloping hillside ultimately running up to the Sugar Loaf.

Predominantly a pastoral landscape of fields with low-cut hedgerows with few associated trees.

Tree cover is associated with parkland to the west and a large garden to the east.

The adjacent settlement edge is moderately well established with some integrating vegetation.

The area is directly adjacent to the National Park and forms part of the hillside setting to the town to the north west and is visible from the National Park to the north and from the south and from the west.

Floodplain lies to the south east and west of the area.

Landscape and visual sensitivity to housing High/Medium

The susceptibility of the area lies in its continuity of open landscape of pastoral slopes leading up to Sugar Loaf, with isolated fine houses to which it contributes a landscape setting, mature parkland trees and gardens to the west, and the area's openness. Its value lies in being adjacent to and overlooked by the National Park and acting as a buffer between it and the settlement, the Conservation Area to the south east, the listed building at The Pentre, and the grassland SINC. LANDMAP value is high for historic landscape and cultural landscape.

Does the area or its attributes contribute to the Wellbeing and Future Generations Act Goals ?

a prosperous Wales a resilient Wales a more equal Wales a globally responsible Wales

a Wales of cohesive communities a Wales of vibrant culture and thriving Welsh Language a healthier Wales

VALUE

Landmap Context Aspect area value Aspect area value

Geological Landscapes Moderate Landscape Habitats Moderate

Historical Landscapes High Cultural Landscapes High

Visual and Sensory Moderate

Designations

Landscape designations comments adjacent to National Park

National Park Yes AONB

Historic/archaeology designations comments Conservation Area to the south east and listed building at The Pentre to the west; overlooked by Llwyndu Court to the north

Historic Parks and Gardens Hist. Parks and Gardens Setting Listed Building Yes

Landscape of Hist. Interest Scheduled Monument Conservation Area Yes WHS

Biodiversity designations comments SINC- remnant orchard and grassland

SAC NNR SINC SSSI RAMSAR

Recreation Factors

Country Park National Trail National/Regional Cycle Route

LANDSCAPE CHARACTER AND SUSCEPTIBILITY

Landscape Character Area

LCA Name Upper usk LCA Number 15 also part of 0 0

Characteristics

Landform gently sloping hillside running up to the steeper hillsides to the north

Landcover semi regular pasture fields with low cut hedges with parkland associated with The Pentre

Pattern

Settlement pattern small cluster of dwellings to the north west

Woodland cover parkland trees and tree belt to the west associated with The Pentre and with Chapel Farm House to the east

Boundaries low-cut thorn hedges

Presence of water stream courses to the east and west, western part in floodplain

Diversity diverse Scale medium

Sense of enclosure generally open

Function of Area

Pastoral Arable Horticulture Recreation other

Comments pasture with a small amount of arable and some large gardens

Functional relationship and connectivity

...with wider landscape some ...with settlement some

...with adjacent assessed area? some Corridor?

Existing Habitat Connectivity Habitat Connectivity Opportunity

the area appears to be managed as part of wider landholdings including the area to the north and is crossed by small lanes linking the settlement with the Sugar Loaf; existing habitat connectivity along watercourse to the west

Are adjacent assessed areas mutually reliant... ...visually? ...functionally

Comments -

PERCEPTUAL SUSCEPTIBILITY

Skyline

Prominence/importance not applicable Complexity

Comments -

Key views

To settlement area is overlooked by lanes running up to the Sugar Loaf and the National Park adjacent. Llwyndu Court overlooks the area which acts as a buffer to the settlement

From settlement The Pentre [listed] overlooks the area

Landmarks -

Detractors -

Intervisibility

Site observation high ...to key features ...from key places

Comments the area forms the lower slopes of the hills around Sugar Loaf and is visible from the south across the valley

Tranquillity

Noise sources roads people

Views of development one side 180 Presence of people infrequent

Summary medium

Comments the settlement is visible to the south and the A465 reduces tranquillity at a distance although the area feels quiet as part of the rural hillside

Settlement edge

Pre C20th edge C20-21st edge Nature of edge neutral Form of edge moderately indented

Comments estate and detached housing with some mature vegetation in gardens

Visual relationship and connectivity

...with settlement some ...with wider landscape some ...with adjacent assessed area significant

Setting

Comments the area forms part of the rural hillside rising to the north-west of Abergavenny providing part of the settlement setting

Receptors

Sensitivity

LLCA A08 Settlement: Abergavenny

urban residents	high/medium
rural residents	high/medium
roads/rail/cycleways	medium

Comments rural residents within and adjacent to the area overlook it, especially The Pentre and Llwyndu Court. Housing to the south also overlooks the area as its rising backcloth. The lanes running up to the Sugar Loaf carry cars with visitors.

OTHER

Other factors The Pentre is a noticeable landmark building when viewed from the south

Potential Improvements (if no development) increase trees in hedgerows and encourage connectivity with the watercourse vegetation and larger gardens

Mitigation (if development) -

SUMMARY

Key characteristics

Valley floor floodplain and lower valley slopes with drumlin bounded by the River Usk and tributary watercourse.

Medium scale irregular pastoral fields in good condition with generally low-cut hedges.

Riparian tree cover reduces longer views but the area is overlooked from the surrounding hills.

Small rural clusters of dwellings, some along the A40[T].

Settlement edge provides a minor detractor including hospital chimney.

Predominantly in National Park and/or in flood plain.

Listed buildings at Llanwenarth Church, Redbarn Farmhouse and Pentre House.

Landscape and visual sensitivity to housing High/Medium

The susceptibility of the area lies in its location in the River Usk floodplain which continues to the east and west, the openness of the rising field to the west above the open floodplain, the relationship between Redbarn Farmhouse and its traditional farm complex and its surrounding landscape setting, separated from the built form of the hospital and the overlooking of the area from steep valley sides within the National Park. The value of the area lies in its location within or adjacent to the Brecon Beacons National Park, listed buildings at Llanwenarth Church, Redbarn Farmhouse and Pentre House and public footpaths including along the River Usk through the area. The LANDMAP value is outstanding for cultural landscape, and outstanding for landscape habitats at the edge (River Usk) and high for visual and sensory and historic landscape.

Does the area or its attributes contribute to the Wellbeing and Future Generations Act Goals ?

a prosperous Wales a resilient Wales a more equal Wales a globally responsible Wales

a Wales of cohesive communities a Wales of vibrant culture and thriving Welsh Language a healthier Wales

VALUE

Landmap Context	Aspect area value	Aspect area value
Geological Landscapes	Moderate	Landscape Habitats Moderate, Usk (Outstanding) at
Historical Landscapes	High	Cultural Landscapes Outstanding
Visual and Sensory	High	

Designations

Landscape designations comments National Park covers all but the north eastern and eastern part of the area

National Park Yes AONB

Historic/archaeology designations comments Llanwenarth Church, Redbarn Farmhouse and Pentre House and a number of dwellings are listed

Historic Parks and Gardens Hist. Parks and Gardens Setting Listed Building Yes

Landscape of Hist. Interest Scheduled Monument Yes Conservation Area Yes WHS

Biodiversity designations comments River Usk is a SAC and SSSI, Neville Hall Hospital grounds comprises a SINC.

SAC Yes NNR SINC SSSI Yes RAMSAR

Recreation Factors

Country Park National Trail National/Regional Cycle Route

LANDSCAPE CHARACTER AND SUSCEPTIBILITY

Landscape Character Area

LCA Name Upper usk LCA Number 15 also part of 0 0

Characteristics

Landform valley floor and lower valley slopes with river and tributary course and an apparently glacial drumlin-like rounded hillock to the east

Landcover predominantly pasture with riparian vegetation

Pattern

Settlement pattern rural farmsteads and dwellings in small clusters and along A48

Woodland cover trees are associated with riparian corridors, dwellings and along roads

Boundaries irregular boundaries of low-cut thorn hedges predominantly with some outgrown hedgerows and mature trees with fences around medium scale fields

Presence of water River Usk and tributary stream courses

Diversity simple Scale medium

Sense of enclosure moderately enclosed

Function of Area

Pastoral Arable Horticulture Recreation other

Comments pasture with a small proportion of arable

Functional relationship and connectivity

...with wider landscape some ...with settlement some

...with adjacent assessed area? some Corridor?

Existing Habitat Connectivity Habitat Connectivity Opportunity

the area is substantially in the floodplain which continues to the east and west, appears to be managed as part of a wider land holding, there is strong habitat connectivity along the watercourse corridors and public footpaths link the settlement with the surrounding countryside including the path by the River Usk and by Redbarn

Are adjacent assessed areas mutually reliant... ...visually? ...functionally

Comments the floodplain continues both east and west

PERCEPTUAL SUSCEPTIBILITY

Skyline

Prominence/importance not applicable Complexity simple

Comments -

Key views

To settlement on main A40 approach to settlement from the west but settlement edge is screened/filtered by roadside vegetation

From settlement -

Landmarks Llanwenarth Church

Detractors Neville Hall Hospital chimney adjacent

Intervisibility

Site observation medium ...to key features ...from key places

Comments overlooked by valley sides in National Park

Tranquillity

Noise sources roads people

Views of development some Presence of people infrequent

Summary medium

Comments the valley is intrinsically tranquil but A40[T] is a noise source and there are views of the adjacent settlement especially the hospital with its chimney and the A465[T] can be heard at a distance.

Settlement edge

Pre C20th edge C20-21st edge Nature of edge negative Form of edge moderately indented

Comments the adjacent estate is linear in character backing onto the A40[T] and the hospital chimney is a detractor

Visual relationship and connectivity

...with settlement some ...with wider landscape some ...with adjacent assessed area some

 Setting

Comments the area lies adjacent to the A40[T] approach to the settlement, provides the rural setting for the River Usk corridor which continues both east and west

Receptors

Sensitivity

rural residents

high

urban residents

high

long distance/public footpaths

high

roads/rail/cycleways

medium

Comments residents within the area itself, users of public footpaths including along the River Usk, adjacent residents and the users of the A40 and lanes

OTHER

Other factors -

Potential Improvements (if no development)

protect and reinforce the riparian corridors and hedgerows linking through to the these to maintain and enhance habitat connectivity along the valley floor

Mitigation (if development) -

SUMMARY

Key characteristics

Valley floor including floodplain adjacent to River Usk.

Small-large scale pastures with some strong tree boundaries, mature tree blocks and riparian vegetation.

Area acts as riverside setting to core of settlement, Conservation Area, SM of castle and listed buildings.

Forms an important and recreation corridor including Castel Meadows with public footpaths including along Usk and some areas are used for informal recreation.

Landscape and visual sensitivity to housing High

The susceptibility of the area lies in its low lying pastoral character, its tree cover, its extensive recreational use including Area of Amenity Importance and footpaths, its role as setting to the historic edge of Abergavenny including the castle and the River Usk, and its role as open undeveloped river corridor and floodplain. Its value lies in its designation as a Conservation Area with listed buildings and SM such as the Castle and Historic Park and Garden, its use for recreation including PROWs and regional cycle route, nature conservation interest with the Usk river corridor SAC and SSSI. LANDMAP value is outstanding for cultural landscape and high for visual & sensory and historic landscape.

Does the area or its attributes contribute to the Wellbeing and Future Generations Act Goals ?

a prosperous Wales a resilient Wales a more equal Wales a globally responsible Wales

a Wales of cohesive communities a Wales of vibrant culture and thriving Welsh Language a healthier Wales

VALUE

Landmap Context	Aspect area value	Aspect area value
Geological Landscapes	Moderate	Landscape Habitats 75% moderate, 25% low, Usk (O
Historical Landscapes	90% high, 10% moderate	Cultural Landscapes Outstanding
Visual and Sensory	High	

Designations

Landscape designations comments Area of Amenity Importance

National Park AONB

Historic/archaeology designations comments in Conservation Area except for south eastern tip and adjacent to SM [Castle] and listed buildings, part is Historic Park and Garden

Historic Parks and Gardens Yes Hist. Parks and Gardens Setting Listed Building Yes

Landscape of Hist. Interest Scheduled Monument Yes Conservation Area Yes WHS

Biodiversity designations comments River Usk adjacent is a SAC and SSSI

SAC Yes NNR SINC SSSI Yes RAMSAR

Recreation Factors

Country Park National Trail National/Regional Cycle Route Yes

LANDSCAPE CHARACTER AND SUSCEPTIBILITY

Landscape Character Area

LCA Name Upper Usk Valley LCA Number 15 also part of 41 0

Characteristics

Landform valley floor including floodplain

Landcover pasture and parkland

Pattern

Settlement pattern none- Abergavenny adjacent

Woodland cover mature trees along river and within pastures

Boundaries irregular small-large size field pattern with mature trees and outgrown hedges with some fenced pasture to the south east

Presence of water River Usk adjacent with tributary watercourses and drains within area

Diversity simple Scale small- medium

Sense of enclosure moderately enclosed

Function of Area

Pastoral Arable Horticulture Recreation other

Comments mostly pasture or grassland used for informal recreation in part

Functional relationship and connectivity

...with wider landscape some ...with settlement significant

...with adjacent assessed area? some Corridor?

Existing Habitat Connectivity Habitat Connectivity Opportunity

area well used in parts as a recreational resource linking into the settlement, including a regional cycle route. The floodplain function extends south and west. Existing habitat connectivity along the river corridor and related to strong tree cover on the edge of the town.

Are adjacent assessed areas mutually reliant... ... visually? ...functionally

Comments part of floodplain

PERCEPTUAL SUSCEPTIBILITY

Skyline

Prominence/importance not applicable Complexity simple

Comments -

Key views

To settlement key views to settlement centre along Usk corridor/Castle Meadows

From settlement key views out from settlement along Usk corridor/Castle Meadows

Landmarks Castle

Detractors -

Intervisibility

Site observation medium ...to key features ...from key places

Comments intervisibility with Castle and some visibility from upper valley sides and from adjacent roads eg A465[T]

Tranquillity

Noise sources roads people

Views of development one side 180 Presence of people frequent

Summary medium/low

Comments the area is frequented by locals walking and partaking in other informal recreation, with noise of traffic from A465, adjacent car park and from road to west. Views of the town are also clear.

Settlement edge

Pre C20th edge C20-21st edge Nature of edge neutral Form of edge moderately indented

Comments mixed edge, some positive with some modern interventions and carparks, generally well integrated with mature vegetation

Visual relationship and connectivity

...with settlement significant ...with wider landscape some ...with adjacent assessed area some

Setting

Comments the area acts as an important setting to the settlement including the castle

Receptors

Sensitivity

LLCA A10 Settlement: Abergavenny

urban residents	high/medium
long distance/public footpaths	high/medium
roads/rail/cycleways	medium

Comments main receptors are users of footpaths and fields for recreation. Users of A465[T] and Llanfoist road also view along the river corridor.

OTHER

Other factors A465[T] is a major detractor to the south

Potential Improvements (if no development) manage pasture for biodiversity

Mitigation (if development) -

SUMMARY

Key characteristics

Valley floor and floodplain of the River Usk with noticeable lower valley slopes, some steep and some rounded.

Semi-regular fields of pasture with some arable and bounded by mix of boundaries from outgrown hedges to fences.

Strong riparian tree cover and woodland on steep slopes.

Settlement of scattered farmsteads on rising ground.

Area has scenic qualities focussed on the river and enclosed by valley sides with views to Bloreng and towards Sugar Loaf.

The A465[T] adjacent and power lines are detractors and reduce tranquillity.

The area lies predominantly in the National Park to the west.

Abergavenny New Cemetery is an historic park and garden to the east, surrounded by trees. with allotments adjacent.

Landscape and visual sensitivity to housing High/Medium

The susceptibility of the area lies in the Usk river corridor, with associated riparian vegetation, the cemetery with associated trees, the open floodplain and the open pastoral valley slopes which are noticeable in views across the valley. The value of the area lies in the National Park status to the west, the historic park and garden cemetery with associated listed buildings, the well used allotments and the PROWs along the Usk and through the area. The LANDMAP value is outstanding for cultural landscape and landscape habitats at the edge (River Usk) and high for visual and sensory and historic landscape.

Does the area or its attributes contribute to the Wellbeing and Future Generations Act Goals ?

- a prosperous Wales a resilient Wales a more equal Wales a globally responsible Wales
 a Wales of cohesive communities a Wales of vibrant culture and thriving Welsh Language a healthier Wales

VALUE

Landmap Context	Aspect area value	Aspect area value
Geological Landscapes	Moderate	Landscape Habitats Moderate, Usk (Outstanding) at
Historical Landscapes	High	Cultural Landscapes Outstanding
Visual and Sensory	High	

Designations

Landscape designations comments -

National Park Yes AONB

Historic/archaeology designations comments Abergavenny New Cemetery is an historic park and garden with associated listed buildings, part of the area by the River Usk bridge is within the Conservation Area

Historic Parks and Gardens Yes Hist. Parks and Gardens Setting Listed Building Yes
 Landscape of Hist. Interest Scheduled Monument Yes Conservation Area Yes WHS

Biodiversity designations comments River Usk adjacent is a SAC and SSSI

SAC Yes NNR SINC SSSI Yes RAMSAR

Recreation Factors

Country Park National Trail National/Regional Cycle Route

LANDSCAPE CHARACTER AND SUSCEPTIBILITY

Landscape Character Area

LCA Name Upper Usk Valley LCA Number 15 also part of

Characteristics

Landform valley floor and lower valley slopes

Landcover pasture, cemetery and allotments

Pattern

Settlement pattern scattered farmsteads

Woodland cover tree belts around cemetery and to the west, and riparian trees

Boundaries semi-regular field boundaries, mixture of fences, outgrown and low cut hedges

 Presence of water River Usk adjacent and overgrown pond

Diversity simple Scale medium

Sense of enclosure moderately enclosed by valley sides above and riparian vegetation, but valley sides within area intervisible to other side of valley

Function of Area

Pastoral Arable Horticulture Recreation other

Comments pasture, cemetery and allotments

Functional relationship and connectivity

...with wider landscape some ...with settlement some

...with adjacent assessed area? limited Corridor? Existing Habitat Connectivity Habitat Connectivity Opportunity

the area appears to be managed as part of wider landholdings to the west, there is a habitat connectivity around the cemetery and a public footpath links the settlement to the east with the countryside to the west

Are adjacent assessed areas mutually reliant... ... visually? ...functionally

Comments -

PERCEPTUAL SUSCEPTIBILITY

Skyline

Prominence/importance apparent Complexity simple

Comments development on valley slopes would appear on local skyline when viewed from valley floor

Key views

To settlement views along valley floor from public footpath and from A465[T]From settlement -

Landmarks -

Detractors A465[T] adjacent and power lines

Intervisibility

Site observation medium ...to key features ...from key places

Comments intervisible with Sugar Loaf and related hills, opposite valley sides and with A465[T]

Tranquillity

Noise sources roads

Views of development one side 180 Presence of people infrequent

Summary medium/low

Comments the A465[T] significantly reduces tranquillity adjacent along with power lines but the area increases in tranquillity to the north west and along the river corridor where visibility is more limited

Settlement edge

Pre C20th edge C20-21st edge Nature of edge negative Form of edge moderately indented

Comments Waitrose supermarket and commercial premises- generally screened from the west by trees within the cemetery

Visual relationship and connectivity

...with settlement some ...with wider landscape some ...with adjacent assessed area some

Setting

Comments part of green corridor setting to Abergavenny along the Usk

Receptors	Sensitivity
rural residents	high
long distance/public footpaths	high
roads/rail/cycleways	medium

Comments overlooked by farmsteads, users of public footpaths and by users of the A465[T]

OTHER

Other factors -

Potential Improvements (if no development) protect and enhance the cemetery grounds with associated trees and vegetation and reinstate hedgerows with trees to connect into the riparian corridor and enhance habitat connectivity

Mitigation (if development) -

SUMMARY

Key characteristics

Lower slopes of the Blorenge falling from the Monmouthshire and Brecon Canal.

Irregular fields of pasture bounded by a mix of boundaries, mainly outgrown hedges.

Strong tree cover along canal, dismantled railway [now footpath/cycleway] and along field boundaries.

Settlement of scattered dwellings with plant nursery and waterways depot to the west.

The area acts as setting to the canal to the south.

The A465[T] adjacent and power lines are detractors and reduce tranquillity.

The area lies predominantly in the National Park to the west and the Blaenavon World Heritage Site to the south.

Landscape and visual sensitivity to housing High/Medium

The susceptibility of the area lies in the canal with associated views and setting, the woodland on the slopes, the woodland cover along the dismantled railway, the well treed boundaries to fields and the small scale irregular pastures, especially to the south, and the rural dwelling cluster to the west. The mound, though not listed may be a susceptible feature. The value of the area lies in the National Park and the World Heritage site designations to the south and west, the canal, the listed buildings on the edge of Llanfoist, the national cycleway and PROWs and the area of amenity importance related to the recreation ground. The LANDMAP value is high for visual and sensory, historic landscape and cultural landscape.

Does the area or its attributes contribute to the Wellbeing and Future Generations Act Goals ?

- a prosperous Wales a resilient Wales a more equal Wales a globally responsible Wales
 a Wales of cohesive communities a Wales of vibrant culture and thriving Welsh Language a healthier Wales

VALUE

Landmap Context	Aspect area value	Aspect area value
Geological Landscapes	Moderate	Landscape Habitats 90% moderate, 5% high, 5% low
Historical Landscapes	High	Cultural Landscapes High
Visual and Sensory	High	

Designations

Landscape designations comments National Park on western part

National Park Yes AONB

Historic/archaeology designations comments Blaenavon World Heritage Site south of B4246 and some listed buildings adjacent including in old Llanfoist and around Llanfoist Boathouse. Monmouth and Brecon Canal on the southern boundary, mound within area

Historic Parks and Gardens Hist. Parks and Gardens Setting Listed Building Yes
 Landscape of Hist. Interest Scheduled Monument Conservation Area WHS Yes

Biodiversity designations comments -

SAC NNR SINC SSSI Yes RAMSAR

Recreation Factors

Country Park National Trail National/Regional Cycle Route Yes

LANDSCAPE CHARACTER AND SUSCEPTIBILITY

Landscape Character Area

LCA Name Upper Usk Valley LCA Number 15 also part of 0 0

Characteristics

Landform sloping valley sides

Landcover pasture, woodland, plant nursery

Pattern

Settlement pattern scattered rural dwellings with a waterways depot to west and plant nursery to the east
 Woodland cover strong tree cover along the canal, dismantled railway/cycleway and in outgrown hedges
 Boundaries irregular outgrown hedges with trees
 Presence of water canal adjacent and garden pond to the east
 Diversity diverse Scale small/medium
 Sense of enclosure enclosed to the south by landform and tree cover but with some views to the north

Function of Area

Pastoral Arable Horticulture Recreation other

Comments pasture, woodland, plant nursery, recreation ground

Functional relationship and connectivity

...with wider landscape some ...with settlement some

...with adjacent assessed area? some Corridor?

Existing Habitat Connectivity Habitat Connectivity Opportunity

acts as a green corridor and setting for the canal to the south, habitat connectivity in tree cover linking into woodland to south

Are adjacent assessed areas mutually reliant... ...visually? ...functionally

Comments -

PERCEPTUAL SUSCEPTIBILITY

Skyline

Prominence/importance not applicable Complexity complex

Comments -

Key views

To settlement -

From settlement views from recreation ground

Landmarks canal to the south

Detractors A465[T] and power lines to the north

Intervisibility

Site observation medium ...to key features ...from key places

Comments the slopes are intervisible with the A465[T] and across the valley but tree cover screens area to the south

Tranquillity

Noise sources roads people

Views of development one side 180 Presence of people frequent

Summary medium/low

Comments the A465[T] significantly reduces tranquillity to the north along with the power lines and the B4246 passes through the area. Tranquillity increases to the south.

Settlement edge

Pre C20th edge C20-21st edge Nature of edge neutral Form of edge moderately indented

Comments indented edge to the east in Llanfoist with some mature vegetation

Visual relationship and connectivity

...with settlement some ...with wider landscape some ...with adjacent assessed area some

Setting

Comments the area forms a continuum of the hillside from the Blorengue down to the River Usk, interrupted by the A465[T], with indented edge of settlement

Receptors	Sensitivity
urban residents	high/medium
rural residents	high/medium
roads/rail/cycleways	medium
long distance/public footpaths	high

Comments the area is overlooked by residents in rural dwellings, from the settlement edge and from the A465[T] and cycleway/footpath along the dismantled railway line

OTHER

Other factors -

Potential Improvements (if no development) maintain tree cover to maintain habitat connectivity with woodland to the south

Mitigation (if development) -

SUMMARY

Key characteristics

Prominent and simple steep slopes rising up towards the Blorengge acting as backcloth to settlement.

Pasture with trees on field boundaries.

Small tree belts break up slope to an extent.

Overlooked and bounded by the Monmouthshire and Brecon Canal.

Lying predominantly within the Blaenavon World Heritage Site, and directly adjacent to National Park and Landscape of Outstanding Historic Interest.

Cycle route along canal.

Landscape and visual sensitivity to housing High

The susceptibility of the area lies in its distinctive prominent steep pastoral slopes leading up to the Blorengge hillside, forming an immediate backcloth to the settlement of Llanfoist and wider views across the valley from Abergavenny and beyond, and links with the wider landscape along the Monmouthshire and Brecon Canal, mature trees boundaries and habitat connectivity with the canal corridor and woodlands of the Blorengge. Its value lies in part being within the Blaenavon World Heritage Site, and directly bounds the National Park and a Landscape of Outstanding Historic Interest with listed structures along the canal, as well as its recreational resource with the canal, cycle route and PROWs. LANDMAP value is high for visual & sensory, historic landscape, cultural landscape and geological landscape.

Does the area or its attributes contribute to the Wellbeing and Future Generations Act Goals ?

a prosperous Wales a resilient Wales a more equal Wales a globally responsible Wales

a Wales of cohesive communities a Wales of vibrant culture and thriving Welsh Language a healthier Wales

VALUE

Landmap Context Aspect area value

Aspect area value

Geological Landscapes High

Landscape Habitats Moderate

Historical Landscapes High

Cultural Landscapes High

Visual and Sensory High

Designations

Landscape designations comments directly adjacent to National Park

National Park AONB

Historic/archaeology designations comments northern half in World Heritage Site and adjacent to a Landscape of Outstanding Historic Interest, listed bridges along the canal

Historic Parks and Gardens Hist. Parks and Gardens Setting Listed Building

Landscape of Hist. Interest Yes Scheduled Monument Conservation Area WHS Yes

Biodiversity designations comments -

SAC NNR SINC Yes SSSI RAMSAR

Recreation Factors

Country Park National Trail National/Regional Cycle Route

LANDSCAPE CHARACTER AND SUSCEPTIBILITY

Landscape Character Area

LCA Name Llanover Lowland LCA Number 16 also part of 0 0

Characteristics

Landform steep, even lower slopes of Blorengge

Landcover pasture

Pattern

Settlement pattern no settlement

Woodland cover tree cover on lanes and very strong tree cover adjacent to canal and on the slopes adjacent to the west

Boundaries regular boundaries with trees and fences

Presence of water canal to the west

Diversity simple Scale medium

Sense of enclosure open

Function of Area

Pastoral Arable Horticulture Recreation other

Comments pasture and large gardens to the north

Functional relationship and connectivity

...with wider landscape some ...with settlement limited

...with adjacent assessed area? some Corridor?

Existing Habitat Connectivity Habitat Connectivity Opportunity

the area appears to be managed as part of a wider landholding, has one footpath which links into the settlement and existing habitat connectivity along the canal corridor with Blorenge woodland

Are adjacent assessed areas mutually reliant... ...visually? ...functionally

Comments -

PERCEPTUAL SUSCEPTIBILITY

Skyline

Prominence/importance not applicable Complexity simple

Comments -

Key views

To settlement -

From settlement area forms part of the backcloth to the settlement

Landmarks canal

Detractors housing on the outskirts of Llanfoist is a minor detractor

Intervisibility

Site observation high ...to key features ...from key places

Comments area visible to the Usk valley and to high ground to the north and east

Tranquillity

Noise sources roads

Views of development some Presence of people frequent

Summary medium

Comments whilst highly rural in character the area is bounded by the B4269

Settlement edge

Pre C20th edge C20-21st edge Nature of edge negative Form of edge smooth/linear

Comments the linear settlement edge is predominantly estate housing

Visual relationship and connectivity

...with settlement some ...with wider landscape some ...with adjacent assessed area some

Setting

Comments the area forms a continuum of the hillside from the Blorenge down to the River Usk, forming a backcloth to the settlement to the north

Receptors

Sensitivity

LLCA A13 Settlement: Abergavenny

urban residents	high/medium
long distance/public footpaths	high/medium
roads/rail/cycleways	medium

Comments the most important receptors are users of the canal and associated footpath. Users of the B4269 and adjacent residents also have clear views into the area.

OTHER

Other factors -

Potential Improvements (if no development) plant trees in hedges to link tree belts with Bloreng woodland

Mitigation (if development) -

SUMMARY

Key characteristics

Valley floor and floodplain of the River Usk with rounded lower valley slopes.

Irregular fields of pasture bounded by mix of boundaries from outgrown hedges to fences with no settlement.

Strong riparian tree cover and poplars around sewage farm.

Area is focussed on the river with views to the Blorenge, Ysgryd Fach and towards Sugar Loaf.

The A465[T] adjacent and power lines are detractors and reduce tranquillity.

The north eastern part is in the Conservation Area and area lies predominantly in floodplain to the east.

Landscape and visual sensitivity to housing High/Medium

The susceptibility of the area lies in being part of the rural pastoral character along the Usk river corridor, its role as floodplain, its visibility from Castle Meadows and the older edge of Abergavenny including the castle on the other side of the river, as well as from the A465(T) on the approaches to the settlement, and its mature riparian vegetation, trees and hedgerows. Its value lies in part being in the Conservation Area, nature conservation interest with adjacent River Usk SAC and SSSI, and its contribution to the setting of the town and Conservation Area. LANDMAP value is outstanding for cultural landscape, and high for visual & sensory and historic landscape.

Does the area or its attributes contribute to the Wellbeing and Future Generations Act Goals ?

- a prosperous Wales a resilient Wales a more equal Wales a globally responsible Wales
 a Wales of cohesive communities a Wales of vibrant culture and thriving Welsh Language a healthier Wales

VALUE

Landmap Context	Aspect area value	Aspect area value
Geological Landscapes	Moderate	Landscape Habitats Moderate, Usk (Outstanding) at
Historical Landscapes	High	Cultural Landscapes Outstanding
Visual and Sensory	High	

Designations

Landscape designations comments -

National Park AONB

Historic/archaeology designations comments part in Conservation Area beside river to the north east

Historic Parks and Gardens Hist. Parks and Gardens Setting Listed Building

Landscape of Hist. Interest Scheduled Monument Conservation Area Yes WHS

Biodiversity designations comments adjacent River Usk is a SAC and SSSI

SAC Yes NNR SINC SSSI Yes RAMSAR

Recreation Factors

Country Park National Trail National/Regional Cycle Route

LANDSCAPE CHARACTER AND SUSCEPTIBILITY

Landscape Character Area

LCA Name Upper Usk Valley LCA Number 15 also part of

Characteristics

Landform valley floor and floodplain with undulating rising ground to the west

Landcover pasture and sewage works

Pattern

Settlement pattern none

Woodland cover riparian trees and poplar trees around sewage works

Boundaries irregular outgrown hedges around medium scale fields

Presence of water River Usk adjacent and scrapes in some fields

Diversity simple Scale medium

Sense of enclosure moderately enclosed by vegetation and surrounding hills

Function of Area

Pastoral Arable Horticulture Recreation other

Comments pasture and sewage works

Functional relationship and connectivity

...with wider landscape limited ...with settlement limited

...with adjacent assessed area? some Corridor?

Existing Habitat Connectivity Habitat Connectivity Opportunity

the area is likely to be managed as part of a wider landholding to the south and existing habitat connectivity along the river corridor

Are adjacent assessed areas mutually reliant... ...visually? ...functionally

Comments -

PERCEPTUAL SUSCEPTIBILITY

Skyline

Prominence/importance apparent Complexity simple

Comments houses adjacent and poplar trees in area to the west lie on skyline when viewed from Castle Meadows

Key views

To settlement views to Castle and centre across area, from Castle Meadows and from A465[T]

From settlement views from Castle and environs towards hills to south across area

Landmarks Castle and town hall to the north

Detractors A465[T] and sewage farm, although the latter is moderately well screened, and pylons

Intervisibility

Site observation medium ...to key features ...from key places

Comments intervisible with castle, Castle Meadows and A465[T]

Tranquillity

Noise sources roads

Views of development many 270 Presence of people infrequent

Summary medium/low

Comments the area to the north by the river is most tranquil although there are views of the town however tranquillity decreases to the south close to the A465[T]

Settlement edge

Pre C20th edge C20-21st edge Nature of edge Form of edge smooth/linear

Comments new development has been implemented to the west and forms part of the skyline when viewed from Castle Meadows along the River Usk to the north

Visual relationship and connectivity

...with settlement significant ...with wider landscape some ...with adjacent assessed area significant

Setting

Comments the area forms part of a green river corridor which acts as the setting to Abergavenny and its castle

Receptors

viewpoints

roads/rail/cycleways

Sensitivity

high

high

LLCA A14

Settlement: Abergavenny

urban residents

high/medium

Comments the area is overlooked by the castle, Castle Meadows, the A465[T] and by residents to the south east and west

OTHER

Other factors -

Potential Improvements (if no development) -

Mitigation (if development) -

SUMMARY

Key characteristics

Small scale undulating lower valley landforms with distinct slopes (including a former tip) and waterbodies, with low lying floodplain by the river to the east, and south.

Pastoral landscape of irregular fields poorly drained in parts, with outgrown hedges and trees in small copses and in some hedgerows.

Pattern of scattered farmsteads with the main focus being listed Grove Farm.

Part of the River Usk corridor enclosed by the hill slopes of the Bloreng to the south.

Exposed to view from the A465[T] which is a noise source and a detractor along with the power lines and current northern settlement edge.

Landscape and visual sensitivity to housing Medium

The susceptibility of the area lies in the floodplain, the area's role as a setting to the River Usk and a buffer to the National Park forming a strong green corridor between Abergavenny and Llanfoist and the A465[T], the locally prominent steep sided landforms such as the tip, the waterbodies and strong hedgerows and pastures with associated biodiversity. The value of the area lies in the scenic value of the small scale landforms and waterbodies enclosed by trees and hedges, listed Grove Farm, the SINC south of Grove Farm and the adjacent River Usk SAC and SSSI. The LANDMAP value is high for visual and sensory, historic landscape, cultural landscape and outstanding at the edge (River Usk) for landscape habitats.

Does the area or its attributes contribute to the Wellbeing and Future Generations Act Goals ?

- a prosperous Wales a resilient Wales a more equal Wales a globally responsible Wales
 a Wales of cohesive communities a Wales of vibrant culture and thriving Welsh Language a healthier Wales

VALUE

Landmap Context	Aspect area value		Aspect area value
Geological Landscapes	Moderate	Landscape Habitats	Moderate, Usk (Outstanding) at
Historical Landscapes	High	Cultural Landscapes	High
Visual and Sensory	High		
Designations			
Landscape designations comments	-		
National Park	AONB		
Historic/archaeology designations comments	World Heritage Site directly adjacent to the south west and listed building at Grove Farm		
Historic Parks and Gardens	Hist. Parks and Gardens Setting	Listed Building	Yes
Landscape of Hist. Interest	Scheduled Monument	Conservation Area	WHS
Biodiversity designations comments	SINC south of Grove Farm and adjacent River Usk is a SAC and SSSI		
SAC Yes	NNR	SINC Yes	SSSI Yes RAMSAR
Recreation Factors			
Country Park	National Trail	National/Regional Cycle Route	

LANDSCAPE CHARACTER AND SUSCEPTIBILITY

Landscape Character Area

LCA Name Upper Usk Valley LCA Number 15 also part of 0 0

Characteristics

Landform small scale undulating lower valley landforms with distinct slopes (including a former tip) and waterbodies, with low lying floodplain by the river to the east, and south

Landcover pasture, rough grassland

Pattern

Settlement pattern scattered farmsteads and waste recycling centre

Woodland cover trees in overgrown hedgerows and surrounding small water bodies
 Boundaries irregular medium-sized fields with generally outgrown hedges
 Presence of water number of small water bodies with the River Usk running adjacent to the east
 Diversity diverse Scale medium/small
 Sense of enclosure moderately enclosed by vegetation and by steep slopes to the south west but more open on tops of landforms

Function of Area

Pastoral Arable Horticulture Recreation other

Comments pasture/meadow

Functional relationship and connectivity

...with wider landscape some ...with settlement some

...with adjacent assessed area? some Corridor?

Existing Habitat Connectivity Habitat Connectivity Opportunity

the area appears to be managed as part of wider landholdings which may include the area to the north [A14], there is existing habitat connectivity through outgrown hedgerows and various water bodies and the area is crossed by public footpaths which link into Llanfoist

Are adjacent assessed areas mutually reliant... ...visually? ...functionally

Comments -

PERCEPTUAL SUSCEPTIBILITY

Skyline

Prominence/importance not applicable Complexity complex

Comments -

Key views

To settlement -

From settlement -

Landmarks -

Detractors A465[T], waste recycling centre and power lines to the north

Intervisibility

Site observation medium ...to key features ...from key places

Comments the area is intervisible with the A465[T]

Tranquillity

Noise sources roads

Views of development one side 180 Presence of people infrequent

Summary medium

Comments the area is essentially rural but is affected by the A465[T] to the north and new development and the waster recycling centre which have an urban fringe character to the north, and it is bounded by the B4269 to the south

Settlement edge

Pre C20th edge C20-21st edge Nature of edge negative Form of edge moderately indented

Comments recent housing, care home and commercial development has been implemented which is located on higher ground and forms the local skyline, with currently limited effective mitigation partly due to development running to the edge of steep slopes.

Visual relationship and connectivity

...with settlement some ...with wider landscape some ...with adjacent assessed area some

Setting

Comments the area forms part of a broadening visual corridor alongside the River Usk and whilst it provides a pleasant setting for the village to the north-west, the new development edge at a high level to the north is raw and intrusive along with the waste recycling centre at the lower level.

Receptors	Sensitivity
rural residents	high
urban residents	high
long distance/public footpaths	high
roads/rail/cycleways	medium

Comments the area is overlooked by users of the canal and towpath, the A465[T] and B4269, by rural dwellings within the area and by adjacent settlement residents

OTHER

Other factors permitted development by the B4269 to the west has not been implemented yet

Potential Improvements (if no development) reinforce connection between waterbodies and associated corridors, linking via hedgerows with trees to Usk and woodland to the south west, manage and plant trees on former tip to form a positive edge to the Usk corridor, improve biodiversity including spe

Mitigation (if development) Restrict any further development to field east of primary school and the field south of, and no further east than the pond. This should be discreet and limit further significant intrusion into the valley landscape and the setting of the River Usk. Retain

SUMMARY

Key characteristics

Monmouthshire Golf Course lying on the lower slopes and valley floor of the River Usk.

Part of the area is floodplain.

Strong tree cover along riparian corridor, in copses and adjoining fairways. The latter is mixed in character. The area forms part of the River Usk valley green corridor in open countryside.

National Park to west, which is intervisible with the area.

Landscape and visual sensitivity to housing High/Medium

The susceptibility of the area lies in its mature tree cover and integration with the green corridor of the Usk, its location in the floodplain, its intervisibility with and continuity with the lower slopes of the Blorenge, and its use for recreation. Its value lies in its proximity to the National Park and Landscape of Outstanding Historic Interest, its nature conservation value on the edge of the River Usk SAC and SSSI, a PROW, and its scenic views in places. LANDMAP value is high for visual & sensory, historic landscape and cultural

Does the area or its attributes contribute to the Wellbeing and Future Generations Act Goals ?

a prosperous Wales a resilient Wales a more equal Wales a globally responsible Wales
 a Wales of cohesive communities a Wales of vibrant culture and thriving Welsh Language a healthier Wales

VALUE

Landmap Context	Aspect area value	Aspect area value
Geological Landscapes	Moderate	Landscape Habitats Moderate, Usk (Outstanding) at
Historical Landscapes	High	Cultural Landscapes High
Visual and Sensory	High	

Designations

Landscape designations comments National Park nearby

National Park AONB

Historic/archaeology designations comments Landscape of Outstanding Historic Interest nearby

Historic Parks and Gardens Hist. Parks and Gardens Setting Listed Building

Landscape of Hist. Interest Scheduled Monument Conservation Area WHS

Biodiversity designations comments adjacent River Usk is a SAC and SSSI

SAC Yes NNR SINC Yes SSSI Yes RAMSAR

Recreation Factors

Country Park National Trail National/Regional Cycle Route

LANDSCAPE CHARACTER AND SUSCEPTIBILITY

Landscape Character Area

LCA Name Upper Usk Valley LCA Number 15 also part of 0 0

Characteristics

Landform undulating lower slopes and valley floor in floodplain of the River Usk

Landcover golf course

Pattern

Settlement pattern none

Woodland cover strong riparian tree cover with deciduous copses and mixed species trees adjacent to fairways

Boundaries n/a

Presence of water River Usk adjacent, pond

Diversity simple Scale medium

Sense of enclosure enclosed by vegetation and steep slopes to the south west

Sense of enclosure

Function of Area

Pastoral Arable Horticulture Recreation other

Comments golf course

Functional relationship and connectivity

...with wider landscape limited ...with settlement limited

...with adjacent assessed area? limited Corridor?

Existing Habitat Connectivity Habitat Connectivity Opportunity

a public footpath crosses the area linking into Llanfoist

Are adjacent assessed areas mutually reliant... ... visually? ...functionally

Comments -

PERCEPTUAL SUSCEPTIBILITY

Skyline

Prominence/importance not applicable Complexity simple

Comments -

Key views

To settlement -

From settlement -

Landmarks -

Detractors -

Intervisibility

Site observation medium ...to key features ...from key places

Comments the area has intervisibility with the steep slopes to the south west and from the north east

Tranquillity

Noise sources roads people

Views of development some Presence of people frequent

Summary medium

Comments the noise of the A465[T] is in the background and the area is frequented by golfers which reduce its tranquillity

Settlement edge

Pre C20th edge C20-21st edge Nature of edge Form of edge

Comments n/a

Visual relationship and connectivity

...with settlement none ...with wider landscape some ...with adjacent assessed area some

Setting

Comments the area forms part of the wider green corridor of the River Usk valley

Receptors

Sensitivity

rural residents

high

long distance/public footpaths

high

roads/rail/cycleways

medium

Comments the main receptors are golfers, a few rural residents have views over the area as do users of the

COMMENTS

B4269 adjacent and the public footpath

OTHER

Other factors -

Potential Improvements (if no development) -

Mitigation (if development) -

SUMMARY

Key characteristics

Valley floor with floodplain adjacent to the River Usk with undulating land rising to the east.

Primarily arable landscape of regular fields with low-cut hedges and trees associated with riparian corridor and scattered farmsteads and dwellings to the south and west.

Major roads and junction, and factory to the north enclosed with strong tree cover and changes in level.

Part of the River Usk corridor enclosed by the hill slopes of the Bloreng to the south.

Exposed to view from the A40[T], A465[T] and railway with associated junction which are noise sources and detractors along with the power lines.

The area provides a rural introduction to Abergavenny and the southern part is overlooked by residents in Llanellen.

Coldbrook House Historic Park and Garden and essential setting to the east, Conservation Area to the north.

Area of amenity importance north of the A465[T].

Landscape and visual sensitivity to housing High/Medium

The susceptibility of the area lies in its undulating, open landscape with mature trees including parkland and avenues, its contribution to the River Usk corridor, existing habitat connectivity especially in the north of the area forming part of the river and road corridors, the floodplain, its visibility from the A40[T], A465[T] and A4043, at a gateway to Abergavenny, the area of amenity importance north of the A465[T] and views from Llanellen. Its value lies in part being a Historic Park and Garden to the east, adjacent River Usk SAC and SSSI, and the scenic quality of the parkland areas to the east and west. LANDMAP value is high for visual & sensory, cultural landscape and historic landscape. The area has high/medium sensitivity as sweeping open countryside forming part of the Usk valley corridor and providing a rural introduction to Abergavenny and overlooked by Llanellen.

Does the area or its attributes contribute to the Wellbeing and Future Generations Act Goals ?

- a prosperous Wales a resilient Wales a more equal Wales a globally responsible Wales
 a Wales of cohesive communities a Wales of vibrant culture and thriving Welsh Language a healthier Wales

VALUE

Landmap Context	Aspect area value	Aspect area value
Geological Landscapes	75% moderate, 10% low, 15% high	Landscape Habitats 75% moderate, 25% low, Usk (O
Historical Landscapes	85% high, 15% moderate	Cultural Landscapes 20% outstanding, 80% high
Visual and Sensory	High	

Designations

Landscape designations comments Area of amenity importance north of the A465[T]

National Park AONB

Historic/archaeology designations comments Coldbrook House Historic Park and Garden and essential setting to the east, Conservation Area to the north.

Historic Parks and Gardens Yes Hist. Parks and Gardens Setting Yes Listed Building

Landscape of Hist. Interest Scheduled Monument Conservation Area Yes WHS

Biodiversity designations comments adjacent River Usk is a SAC and SSSI

SAC Yes NNR SINC SSSI Yes RAMSAR

Recreation Factors

Country Park National Trail National/Regional Cycle Route

LANDSCAPE CHARACTER AND SUSCEPTIBILITY

Landscape Character Area

LCA Name Upper Usk Valley LCA Number 15 also part of 0 0

Characteristics

Landform gently sloping undulating slopes and valley floor with floodplain

Landcover arable and pasture

Pattern

Settlement pattern scattered rural dwellings and food production plant

Woodland cover tree cover associated with riparian corridor of the River Usk, and with dwellings and chicken processing factory and roadsides, and remnant parkland trees

Boundaries regular medium to large fields with discontinuous low-cut hedges with some trees

Presence of water River Usk runs adjacent, watercourse, west edge in floodplain

Diversity diverse Scale medium-large

Sense of enclosure open to the south and enclosed to the north

Function of Area

Pastoral Arable Horticulture Recreation other

Comments primarily arable with some pasture

Functional relationship and connectivity

...with wider landscape some ...with settlement some

...with adjacent assessed area? some Corridor?

Existing Habitat Connectivity Habitat Connectivity Opportunity

the area is managed as part of a series of wider landholdings and has one short public footpath; existing habitat connectivity lies along the road corridors and associated undeveloped land.

Are adjacent assessed areas mutually reliant... ... visually? ...functionally

Comments -

PERCEPTUAL SUSCEPTIBILITY

Skyline

Prominence/importance not applicable Complexity complex

Comments -

Key views

To settlement area forms initial gateway to Abergavenny on A40

From settlement -

Landmarks

-

Detractors A465, road junction with A40, power lines, food production plant, large barns to immediate south

Intervisibility

Site observation medium ...to key features ...from key places

Comments intervisible with hillsides to the south west

Tranquillity

Noise sources roads

Views of development some Presence of people frequent

Summary medium

Comments the area is essentially rural to the south becoming semi-rural on the settlement edge to the north that has major roads passing through it which reduce its tranquillity in addition to the powerlines

Settlement edge

Pre C20th edge C20-21st edge Nature of edge neutral Form of edge highly indented

Comments the northern part of the area provides a semi-rural approach to the settlement on Abergavenny with the significant tree cover helping to integrate it into the landscape

Visual relationship and connectivity

...with settlement limited ...with wider landscape some ...with adjacent assessed area some

 Setting

Comments the area forms part of the River Usk valley corridor and is overlooked by the village of Llanellen to the south

Receptors

rural residents

urban residents

roads/rail/cycleways

Sensitivity

high

high

medium

Comments the main receptors are users of the roads and railway line which cross the area. There are also a few rural residents and residents within the settlements of Llanellen and Abergavenny.

OTHER

Other factors -

Potential Improvements (if no development)

hedgerow improvement and strengthen tree belts to River Usk to the west and into the wider landscape including the barns to south

Mitigation (if development) -

SUMMARY

Key characteristics

Sloping hill and valley sides on the lower slopes of the Ysgyrd Fach.

Bounded by open countryside to the east and by the A465 Hereford Road to the west.

Mainly arable, rectilinear fields with low cut hedgerows and remnant parkland to the east.

Trees are associated with Coldbrook Park, with specimen trees in fields and along some field boundaries.

Settlement comprises of dwellings in Coldbrook Park.

Views are dominated by Ysgyrd Fach with views across to the Bloreng.

The rising landforms forms part of the unspoilt open countryside backcloth to Abergavenny.

Coldbrook House Historic Park and Garden and essential setting.

Landscape and visual sensitivity to housing High/Medium

The susceptibility of the area lies in its gently sloping landform beneath the wooded hill of Ysgyrd Fach, with associated mature tree belts and parkland trees in Coldbrook Park, forming part of the open rural setting to the town east of the railway and A465, and its clear separation from the town by the transport corridors. Its value lies in being part of a Historic Park and Garden, and Historic Park Essential Setting, close to a listed building, its scenic value combining with the landmark wooded hill of Ysgyrd Fach. LANDMAP value is high for visual & sensory, cultural landscape and geological landscape, and partly high for historic landscape.

Does the area or its attributes contribute to the Wellbeing and Future Generations Act Goals ?

- a prosperous Wales a resilient Wales a more equal Wales a globally responsible Wales
 a Wales of cohesive communities a Wales of vibrant culture and thriving Welsh Language a healthier Wales

VALUE

Landmap Context	Aspect area value	Aspect area value
Geological Landscapes	High	Landscape Habitats Moderate
Historical Landscapes	65% high, 35% moderate	Cultural Landscapes High
Visual and Sensory	High	
Designations		
Landscape designations comments	-	
National Park	AONB	
Historic/archaeology designations comments	south west part of site in Coldbrook House Historic Park and Garden, and remainder is Historic Park essential setting, with listed building to immediate east	
Historic Parks and Gardens	Yes	Hist. Parks and Gardens Setting Yes Listed Building
Landscape of Hist. Interest	Scheduled Monument	Conservation Area WHS
Biodiversity designations comments	-	
SAC	NNR	SINC SSSI RAMSAR
Recreation Factors		
Country Park	National Trail	National/Regional Cycle Route

LANDSCAPE CHARACTER AND SUSCEPTIBILITY

Landscape Character Area

LCA Name Northern Hills LCA Number 26 also part of 41 0

Characteristics

Landform lower slopes of Ysgyrd Fach

Landcover arable, pasture, parkland

Pattern

Settlement pattern isolated dwellings in Coldbrook Park

Woodland cover trees and woodland block around Coldbrook Park with parkland trees, and mature field boundaries

Boundaries rectilinear medium-sized fields with low cut hedges

Presence of water pond in Coldbrook Park

Diversity simple Scale medium

Sense of enclosure open

Function of Area

Pastoral Arable Horticulture Recreation other

Comments arable

Functional relationship and connectivity

...with wider landscape some ...with settlement limited

...with adjacent assessed area? some Corridor?

Existing Habitat Connectivity Habitat Connectivity Opportunity

the area appears to be managed as part of a wider landholding, public footpaths run along boundaries and habitat connectivity in hedgerows and watercourse run towards along A465

Are adjacent assessed areas mutually reliant... ...visually? ...functionally

Comments Ysgyryd Fach and this area are complementary

PERCEPTUAL SUSCEPTIBILITY

Skyline

Prominence/importance apparent Complexity simple

Comments area forms part of skyline when viewed A465 corridor

Key views

To settlement -

From settlement area forms part of the eastern backcloth to Abergavenny

Landmarks -

Detractors power lines across the area

Intervisibility

Site observation medium ...to key features ...from key places

Comments area is visible as the lower slopes of the Ysgyryd Fach

Tranquillity

Noise sources roads

Views of development one side 180 Presence of people infrequent

Summary medium

Comments though the area is rural in character the A465 and A40[T] are noise sources nearby and, with the pylons, reduce tranquillity

Settlement edge

Pre C20th edge C20-21st edge Nature of edge neutral Form of edge smooth/linear

Comments the settlement edge is effectively screened by trees along the A465 and railway line

Visual relationship and connectivity

...with settlement some ...with wider landscape some ...with adjacent assessed area significant

 Setting

Comments the area acts as part of the backcloth the east of Abergavenny along with Ysgyryd Fach to the north

LLCA A18

Settlement: Abergavenny

Receptors Sensitivity

rural residents high

urban residents high

long distance/public footpaths high

roads/rail/cycleways medium

Comments the area is highly visible from the adjacent major roads, from parts of Abergavenny and by rural residents

OTHER

Other factors -

Potential Improvements (if no development) maintain and strenghten hedgerows and tree belts

Mitigation (if development) -

SUMMARY

Key characteristics

Distinct irregular conical hill of Ysgyrd Fach.

Bounded by open countryside to the east and by the A465 Hereford Road to the west.

Mixed woodland on upper slopes and hilltop dominated by conifers with some clearings.

Pastoral, irregular fields with low cut hedgerows and farmsteads on lower slopes.

The hill forms the open countryside rural backcloth to Abergavenny including key views from Castle Meadows.

Views across to the Sugar Loaf and Blorenge.

Coldbrook House Historic Park and Garden essential setting lies within southern part.

Landscape and visual sensitivity to housing High

The susceptibility of the area lies in the landmark wooded hill of Ysgyrd Fach complemented by its unspoilt lower pastoral slopes, its clear separation from the town by the railway and A465, and openness of low cut hedgerows and isolated farmsteads and its role as backcloth to the town with views from Castle Meadows and longer views from the west. Its value lies in its role as part of the essential setting to Coldbrook House Historic Park and Garden to the south as well as access on PROWs. LANDMAP value is high for visual & sensory, cultural landscape and geological landscape.

Does the area or its attributes contribute to the Wellbeing and Future Generations Act Goals ?

- a prosperous Wales a resilient Wales a more equal Wales a globally responsible Wales
 a Wales of cohesive communities a Wales of vibrant culture and thriving Welsh Language a healthier Wales

VALUE

Landmap Context	Aspect area value	Aspect area value
Geological Landscapes	High	Landscape Habitats Moderate
Historical Landscapes	Moderate	Cultural Landscapes High
Visual and Sensory	High	
Designations		
Landscape designations comments	-	
National Park	AONB	
Historic/archaeology designations comments	Coldbrook House Historic Park and Garden lies to the south, and the essential setting lies within southern part of A19	
Historic Parks and Gardens	Hist. Parks and Gardens Setting	Yes Listed Building
Landscape of Hist. Interest	Scheduled Monument	Conservation Area WHS
Biodiversity designations comments	-	
SAC	NNR	SINC SSSI RAMSAR
Recreation Factors		
Country Park	National Trail	National/Regional Cycle Route

LANDSCAPE CHARACTER AND SUSCEPTIBILITY

Landscape Character Area

LCA Name Ysgyrd Fach LCA Number 33 also part of

Characteristics

Landform distinct irregular conical hill of Ysgyrd Fach

Landcover mixed woodland on the upper slopes and pasture on the lower slopes

Pattern

Settlement pattern scattered rural farmstead and dwellings

Woodland cover strong mixed woodland dominated by conifers with clearing on upper slopes and hilltop

Boundaries irregular medium scale fields bounded by low-cut hedges

Presence of water series of small ponds and small watercourse

Diversity diverse Scale medium

Sense of enclosure generally open

Function of Area

Pastoral Arable Horticulture Recreation other

Comments woodland and pasture

Functional relationship and connectivity

...with wider landscape some ...with settlement limited

...with adjacent assessed area? some Corridor?

Existing Habitat Connectivity Habitat Connectivity Opportunity

the area is likely to be managed as part of a wider landholding, has public footpaths which potentially link into the settlement and existing habitat connectivity in field boundaries and watercourses linking to A465 corridor

Are adjacent assessed areas mutually reliant... .. visually? ...functionally

Comments this area and adjacent slopes are complementary

PERCEPTUAL SUSCEPTIBILITY

Skyline

Prominence/importance very prominent Complexity simple

Comments simple wooded hill top with open hillsides

Key views

To settlement -

From settlement hill forms backcloth to town including key views from Castle Meadows

Landmarks -

Detractors power lines to the south

Intervisibility

Site observation high ...to key features ...from key places

Comments the hillside is widely visible

Tranquillity

Noise sources roads

Views of development one side 180 Presence of people infrequent

Summary medium

Comments the A465 and A40[T] reduce the tranquillity of the area to an extent although within the woodland tranquillity is likely to be higher

Settlement edge

Pre C20th edge C20-21st edge Nature of edge neutral Form of edge smooth/linear

Comments the settlement edge is effectively screened by trees along the A465 and railway line

Visual relationship and connectivity

...with settlement significant ...with wider landscape significant ...with adjacent assessed area significant

Setting

Comments the area is a prominent hill with adjacent lower slopes acting as a backcloth to the settlement and Castle Meadows

Receptors

rural residents

long distance/public footpaths

roads/rail/cycleways

Sensitivity

high

high

medium

LLCA A19

Settlement: Abergavenny

urban residents

high/medium

Comments the area is highly visible from the adjacent major roads, from parts of Abergavenny and by rural residents

OTHER

Other factors -

Potential Improvements (if no development) strengthen hedgerows connecting with A465 corridor

Mitigation (if development) -