

PROPOSALS FOR CHURCH RD



CALDICOT

Have Your Say

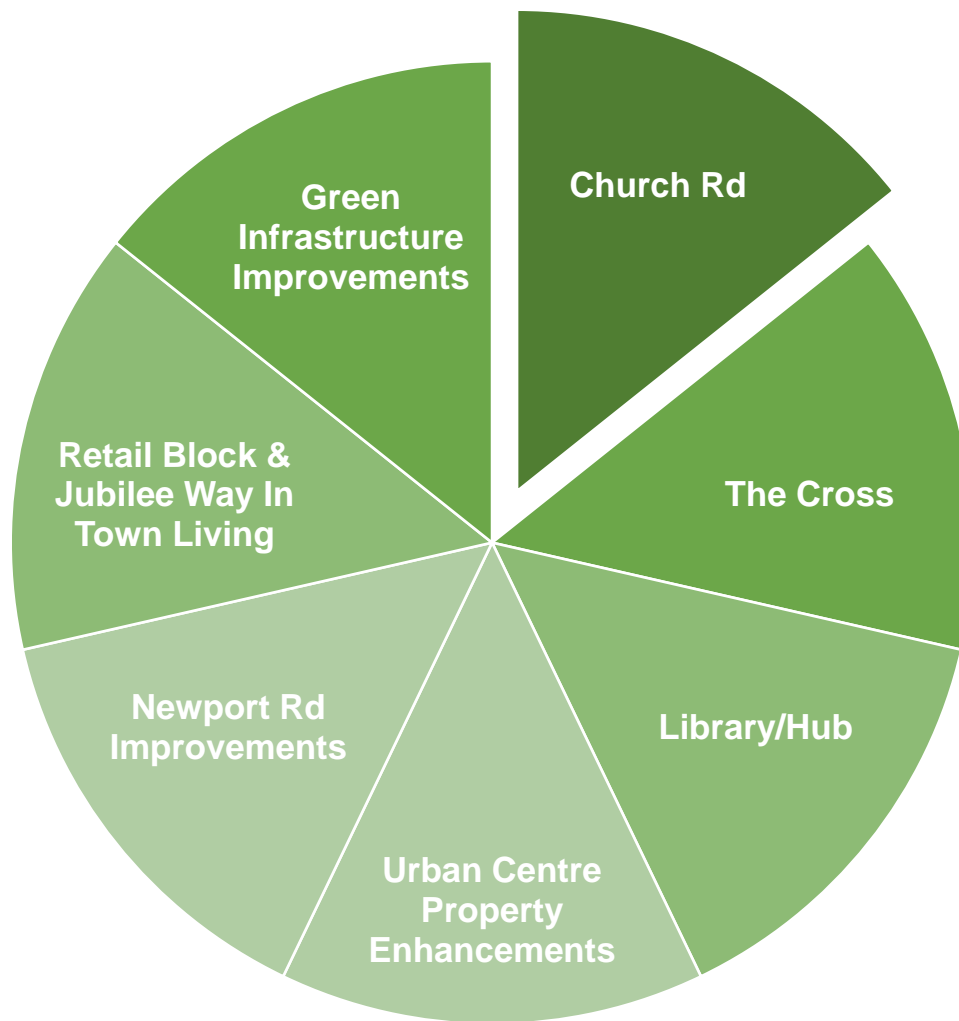


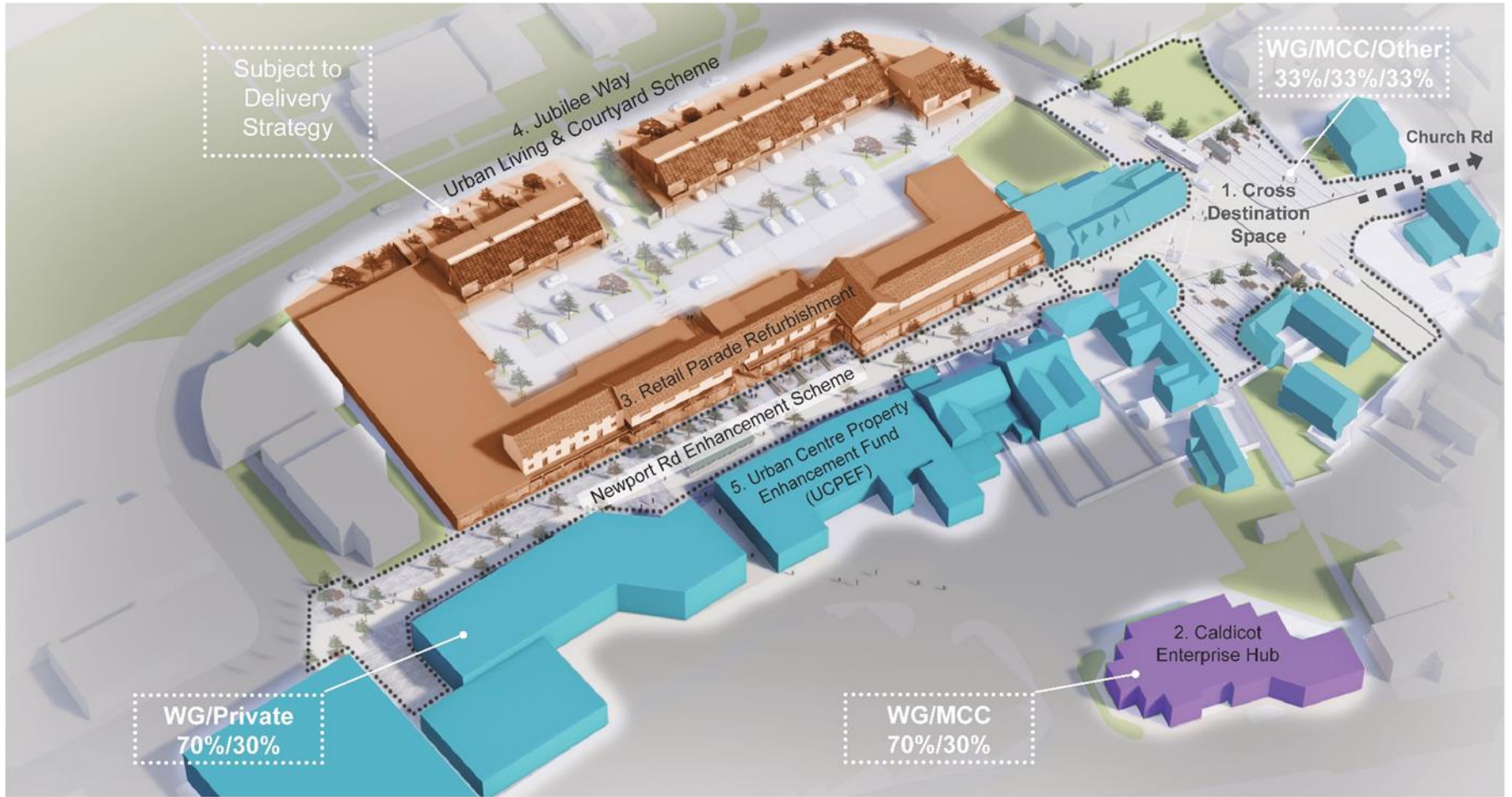
Focus on Caldicot

- ✓ Caldicot chosen as a key strategic place within Cardiff Capital Region
- ✓ Managing growth – removal of bridge tolls and new housing
- ✓ Town centre needs reinvestment
- ✓ Opportunity to repurpose
- ✓ Connecting the parts – place based
- ✓ Focus on well-being



Caldicot Regeneration

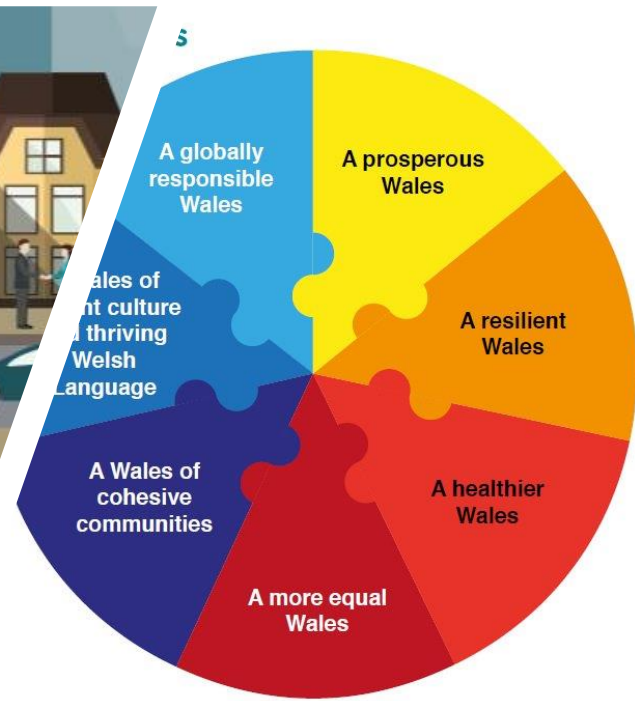




Why Church Rd?

Why Church Road?

- Caldicot chosen as a key strategic place within Cardiff Capital Region
- Managing growth – removal of bridge tolls and new housing
- Town centre needs reinvestment
- Opportunity to repurpose
- Connecting the parts – place based
- Focus on well-being



Key Issues and Opportunities

- History of growing demand for on-street parking during drop off and pick up times
- Increasing traffic speeds and risks
- Managing future housing growth
- Linking the Castle & Country Park with the Town Centre – part of extended experience
- Climate change response – greening, drainage and encouraging active travel
- A road that needs to become a street



Church Road Now

- Congestion during school drop off and pick up times
- Hard environment with no trees or landscape
- Narrow footways
- Cars parking over kerbs
- Lack of opportunities to cross
- Traffic dominant
- Poor announcement into Castle & Country Park

Our Proposal

Our Proposal for Church Rd

Things to Consider

- Access to residents drives and properties
- How residents walk within this area of Caldicot?
- Managing access to Llanthony Close for residents and teachers
- Primary school pupils – getting to school
- Users of Castle, Country Park, Pub, local businesses
- Introducing trees and planting to slow down traffic
- Drainage and existing utilities

Our Proposal for Church Rd

The Vision

- To transform a road into a street
- A space for walkers and cyclists
- Pupils walk to school
- Local residents look out onto less traffic
- Trees and planting lead to greater biodiversity
- Planting helps absorb water from drainage
- Castle & Country Park feel part of experience
- Contributes to the future well-being of Caldicot







Our Proposal for Church Rd

The Detail – the School

- Provide an off-street car park just off the entrance into the Castle and Country Park for primary school parents to use
- Create safe routes to school – wider pavements on school side – pedestrian priority
- Parents should not access Llanthony Close at drop off and pick up time and stop pedestrian access to school from the Close
- Educational activity at school related to climate change and changing our behaviours





Our Proposal for Church Rd

The Detail – the Road

- Create build outs with trees and planting that slows down traffic, improves drainage and adds to biodiversity
- Creation of places to cross
- Wider pavements on school side of road
- Pedestrian priority through the road at junctions
- Places for buses to pick up/drop off passengers
- Use of quality materials as used in the Cross scheme













Our Proposal for Church Rd

The Detail – the Castle and Country Park

- Announce the entrance better with signage
- Inner gateway feature
- Better pedestrian crossing point
- Pedestrian and cycle path link into country park
- Car park for country park users



Caldicot Castle
& Country Park
Castell Cil-y-Coed
A Pharc Gwledig



Benefits for the Community

- Increased levels of walking and cycling
- Increase in activity levels and reduction in health related issues
- Greater interaction on streets and in neighbourhoods
- Reduction in flood risk due to sustainable urban drainage features
- Changes in travel behaviour and modal shift
- Community cohesion and inter-generational engagement on streets and open space
- Greater awareness of climate change
- Increase in visitor dwell and associated benefits
- Enhanced perception of Caldicot as a place and destination

Next Steps

May 2020

- Receive residents' comments
- Open consultation to wider community
- Review comments and refine design

June 2020

- Submit planning application for car park

Aug 2020

- Secure funding

Sept 2020

- Develop design

Dec 2020

- Appoint a contractor

Jan 2021

- Commence works



Have Your Say

Get in Touch

- Complete on-line survey: XXX
- Email: sadiebeer@Monmouthshire.gov.uk

