

# nature isn't neat

## A guide to Monmouth Town's Pollinator projects

Nature Isn't Neat is a pilot project in partnership with Monmouth Town Council, Bees for Development, Transition Monmouth and Monmouthshire Meadows Group, it is funded through the Welsh Government Rural Communities under the LEADER measure of the Rural Development Programme 2014-2020.

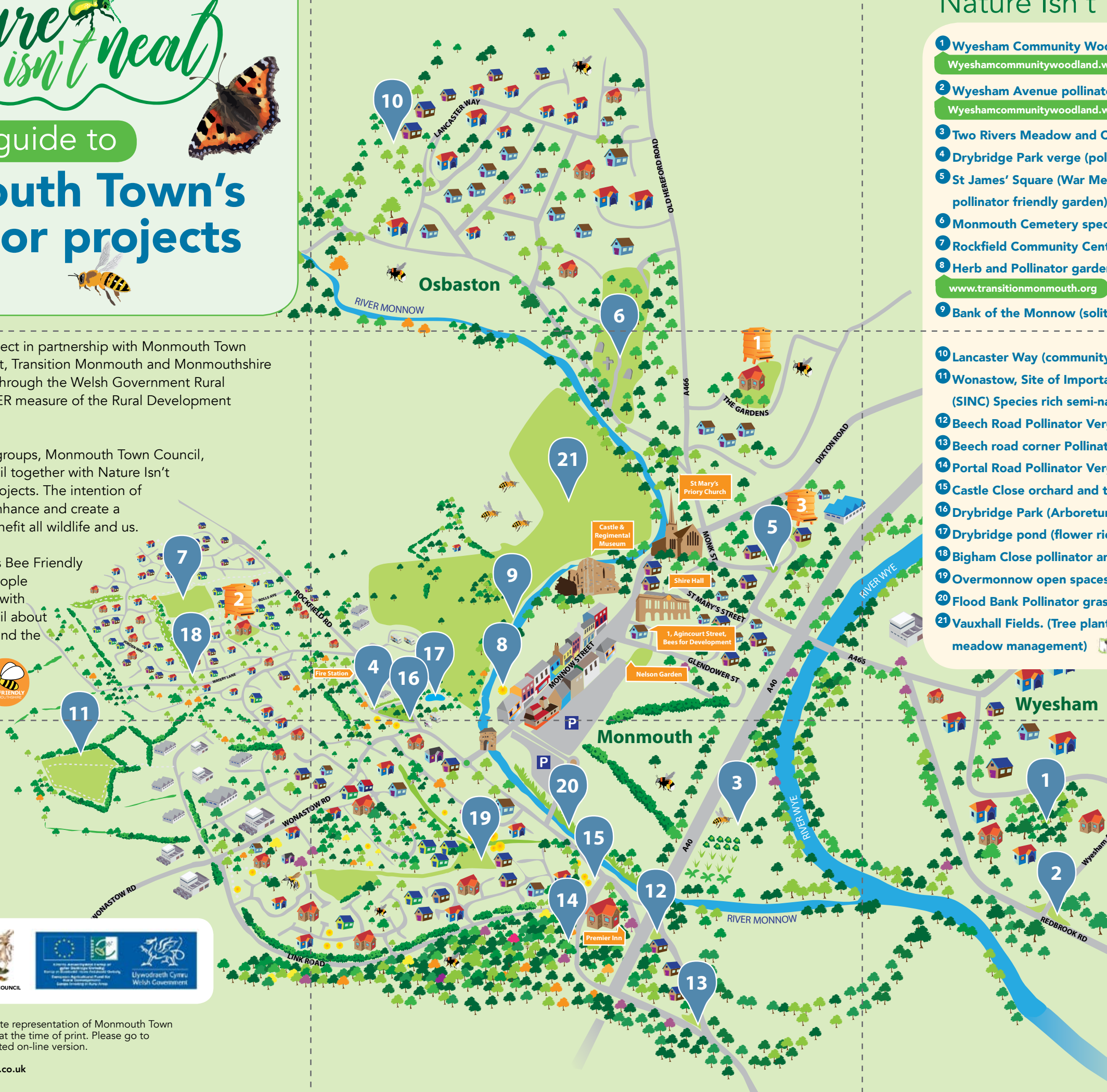
Monmouth Town Community groups, Monmouth Town Council, Monmouthshire County Council together with Nature Isn't Neat have carried out these projects. The intention of all the projects is to protect, enhance and create a sustainable environment to benefit all wildlife and us.

Alongside these groups stands Bee Friendly Monmouthshire, a group of people who started the conversations with Monmouthshire County Council about the importance of pollinators and the need to take action. You see their iconic Bee logo on roundabouts and verges throughout Monmouthshire.



This map is not intended to be an accurate representation of Monmouth Town but as an illustrative guide. It is accurate at the time of print. Please go to [Monmouthshire.gov.uk/nin](http://Monmouthshire.gov.uk/nin) for an updated on-line version.

Designed & illustrated by [artmattersstudio.co.uk](http://artmattersstudio.co.uk)



## Nature Isn't Neat Map Key

- 1 Wyesham Community Woodland  
[Wyeshamcommunitywoodland.wordpress.com/www.transitionmonmouth.org](http://Wyeshamcommunitywoodland.wordpress.com/www.transitionmonmouth.org)
- 2 Wyesham Avenue pollinator patch  
[Wyeshamcommunitywoodland.wordpress.com/www.transitionmonmouth.org](http://Wyeshamcommunitywoodland.wordpress.com/www.transitionmonmouth.org)
- 3 Two Rivers Meadow and Community Orchard
- 4 Drybridge Park verge (pollinators habitat)
- 5 St James' Square (War Memorial garden to be transformed into pollinator friendly garden)  
[www.transitionmonmouth.org](http://www.transitionmonmouth.org)
- 6 Monmouth Cemetery species rich grassland
- 7 Rockfield Community Centre garden
- 8 Herb and Pollinator garden (by the bus station)  
[www.transitionmonmouth.org](http://www.transitionmonmouth.org)
- 9 Bank of the Monnow (solitary bee nesting site)
- 10 Lancaster Way (community orchard)  
[www.transitionmonmouth.org](http://www.transitionmonmouth.org)
- 11 Wonastow, Site of Importance for Nature Conservation (SINC) Species rich semi-natural habitat
- 12 Beech Road Pollinator Verge
- 13 Beech road corner Pollinator Verge
- 14 Portal Road Pollinator Verge
- 15 Castle Close orchard and tree planting
- 16 Drybridge Park (Arboretum and spring flowers)
- 17 Drybridge pond (flower rich habitats)
- 18 Bigham Close pollinator areas
- 19 Overmonnow open spaces
- 20 Flood Bank Pollinator grassland
- 21 Vauxhall Fields. (Tree planting and improved meadow management)

monmouthshire sir fynyw "Grounds and Cleaning" Team

Pollinators

### Wildlife gardens to visit during Open Bee Gardens May 2nd 2020

- 1 11, The Gardens, Monmouth  
(viewing also available by appointment)
- 2 37, Brook Estate, Monmouth
- 3 The Barn, The Burgage, Monmouth

Bees for Development

