

Summary

Key characteristics Valley floor and floodplain adjacent to the River Wye. Medium sized pasture fields with mix of low cut and outgrown hedges and riparian vegetation. The area forms part of the open rural approaches to the settlement from the north/east , including the Wye Valley Walk and A466, and acts as part of the setting of the listed church. The area lies in the Wye Valley AONB and Lower Wye Valley Landscape of Outstanding Historic Interest.

Landscape sensitivity high

The area has high sensitivity as it forms the open Wye valley floor/floodplain approach to the settlement along which the Wye Valley Way runs and which acts as as setting to the listed church of St Michael. It lies within the AONB.

Housing capacity low

The area has low capacity for housing as it is open and acts as setting for the Wye Valley Way, the river and the listed church of St Michaels.

Combined Character Area

CCA Number CCA23

LANDMAP Context

Aspect area value

Geological landscapes 55% outstanding, 45% high

Landscape habitats 100% outstanding

Historical landscapes 100% outstanding

Cultural landscapes 100% outstanding

Visual and sensory 100% outstanding

Visual and sensory sensitivity

Designations

Landscape designations in Wye Valley AONB
comments

National Park AONB YES SLA

Historic/archaeology designations comments in Lower Wye Valley Landscape of Outstanding Historic Interest; church of St Michael to west is listed building

Landscape of Hist. Interest YES Historic Parks and Gardens WHS YES

Hist.Parks and Gardens essential setting

SAM Conservation Area Listed Building

Biodiversity designations comments River Wye adjacent is a pSAC and SSSI

SAC YES NNR SINC SSSI YES RAMSAR

Other

Country Park National Trail National Cycle Route

Floodplain (100yr) YES

Characteristics

Landform valley floor and floodplain adjacent to river

Landcover pasture

Function of Area

Pastoral Arable Horticulture Recreation Other

Comments pasture

Pattern

Settlement pattern none

Woodland cover riparian vegetation

Boundaries medium sized fields with mix of low cut and outgrown hedges

Presence of water Comments River Wye adjacent

Scale medium

Sense of enclosure enclosed by valley sides but moderately open in valley floor

Diversity simple

Skyline

Prominence/ importance not applicable Complexity

Comments -

Key views

To settlement A466 approaches to settlement- glimpses of church

From settlement view from churchyard across area

Landmarks church adjacent

Detractors -

Intervisibility

Site observation medium ...to key features ...from key place

Comments open valley floor intervisible with valley sides and road

Tranquillity

Noise sources roads

Views of development some

Presence of people infrequent

Summary medium

Comments the adjacent road- A466, reduces the tranquillity of an otherwise peaceful riverside rural location

Functional relationship of area...

...with settlement some ...with wider landscape some

...with adjacent assessed area? some Corridor?

Comments area appears to be managed as part of wider land holdings and as a corridor for the Wye with its floodplain with the Wye Valley Walk passing through it into the settlement

Visual relationship of area...

...with settlement some ...with wider landscape some

...with adjacent assessed area? some Setting?

Comments the area forms part of the open rural approaches to the settlement from the north/east and acts as part of the setting of the church

Are adjacent assessed areas mutually reliant...

... visually? ...functionally?

Comments -

Settlement edge

Pre C20 edge C20-21 edge

Nature of edge positive Form of edge moderately indented

Comments the church forms a positive edge to the settlement

Receptors

Receptors	Sensitivity
long distance/public footpaths	high
viewpoints	high
roads/rail/cycleways	medium

Comments the main receptors are users of the Wye Valley Walk, the road and the adjacent churchyard

Other

Other factors -

Potential Improvements -

Summary

Key characteristics Sloping valley sides of the Wye Valley increasing in steepness on upper slopes.
 Mix of regular and irregular medium sized fields with tree or fence boundaries with pasture, vines and nursery.
 Deciduous woodland copses, on some field boundaries and invading some fields to the west.
 The area forms part of the open rural approaches to the settlement from the north and east and acts as part of the setting of the church and the northern edge of the settlement.
 The settlement edge appears predominantly traditional in form with limited incremental growth mitigated to an extent by trees.
 The area lies in the Wye Valley AONB and Lower Wye Valley Landscape of Outstanding Historic Interest.

Landscape sensitivity high/medium

The area has high/medium sensitivity as it forms the relatively exposed valley sides with trees and other rural uses which give complexity and interest with only a very limited and incremental traditional settlement edge adjacent.

Housing capacity medium/low

The area has medium/low capacity for housing as the slopes are generally sensitive and open to view towards the south and east eg A466 and with a clear boundary along Trellech Road. The settlement edge has developed over time with traditional cottages and gaps and this character and pattern should be retained.

Combined Character Area

CCA Number CCA23

LANDMAP Context

	Aspect area value
Geological landscapes	100% outstanding
Landscape habitats	7% high, 93% moderate
Historical landscapes	100% outstanding
Cultural landscapes	100% outstanding
Visual and sensory	100% outstanding

Visual and sensory sensitivity

Designations

Landscape designations comments in Wye Valley AONB

National Park AONB YES SLA

Historic/archaeology designations comments in Lower Wye Valley Landscape of Outstanding Historic Interest; Conservation Area adjacent

Landscape of Hist. Interest YES Historic Parks and Gardens WHS YES

Hist.Parks and Gardens essential setting

SAM Conservation Area YES Listed Building

Biodiversity designations comments -

SAC NNR SINC SSSI RAMSAR

Other

Country Park National Trail National Cycle Route

Floodplain (100yr)

Characteristics

Landform sloping valley sides of the Wye Valley increasing in steepness on upper slopes

Landcover pasture

Function of Area

Pastoral Arable Horticulture Recreation Other

Comments pasture, vines and horticulture

Pattern

Settlement pattern small nursery complex

Woodland cover deciduous woodland copses, on some field boundaries and invading some fields to the west

Boundaries mix of regular and irregular medium sized fields with tree or fence boundaries

Presence of water Comments -

Scale medium

Sense of enclosure moderately enclosed particularly to the west

Diversity simple

Skyline

Prominence/ importance prominent Complexity simple

Comments the slopes form the skyline in parts from lower valley views

Key views

To settlement views to the settlement on A466 approaches and from footpaths

From settlement forms valley side backcloth in views east out of settlement

Landmarks -

Detractors -

Intervisibility

Site observation high ...to key features ...from key place

Comments the Wye valley sides are highly intervisible with the valley floor and other side of the valley although this reduces to the west in the tributary valley

Tranquillity

Noise sources roads

Views of development one side 180 Presence of people infrequent

Summary high/medium

Comments the area is generally tranquil although some traffic noise is audible from A466

Functional relationship of area...

...with settlement some ...with wider landscape some

...with adjacent assessed area? some Corridor?

Comments area appears to be managed as part of wider land holdings and has public footpaths linking into the settlement

Summary

Key characteristics Steep minor valley sides of the Catbrook.
 Poorly defined irregular small-medium fields with outgrown hedges and trees.
 Strong woodland cover, mixed in places, with scrub and bracken invading pasture in places.
 Mix of traditional and more modern rural dwellings scattered throughout the area, one on skyline.
 The area forms part of the wooded rural approaches to the settlement from the north and forms part of the steep valley side backcloth and skyline to views from the valley floor.
 The area is in the Wye Valley AONB and in Lower Wye Valley Landscape of Outstanding Historic Interest.
 Hill Cottage grassland SINC lies in the area.

Landscape sensitivity high/medium

The area has a high/medium sensitivity as it consists of the steep sided valley slopes with strong mixed woodland cover which forms an attractive backcloth and local skyline to the settlement. The woodland is interspersed with pasture, some neglected, with rural dwellings generally well integrated into the landscape.

Housing capacity medium/low

The area has medium/low capacity for housing due to its steeply sloping, wooded and rural character with existing dwellings in Barbadoes Green reaching the capacity of the area to absorb further development without adverse effects.

Combined Character Area

CCA Number CCA25

LANDMAP Context

Aspect area value

Geological landscapes 93% outstanding, 7% moderate

Landscape habitats 100% moderate

Historical landscapes 100% outstanding

Cultural landscapes 100% outstanding

Visual and sensory 100% outstanding

Visual and sensory sensitivity

Designations

Landscape designations in Wye Valley AONB
 comments

National Park AONB YES SLA

Historic/archaeology designations in Lower Wye Valley Landscape of Outstanding Historic Interest
 comments

Landscape of Hist. Interest YES Historic Parks and Gardens WHS YES

Hist. Parks and Gardens essential setting

SAM Conservation Area YES Listed Building

Biodiversity designations Hill Cottage grassland SINC
 comments

SAC NNR SINC YES SSSI YES RAMSAR

Other

Country Park

National Trail

National Cycle Route

Floodplain (100yr)

Characteristics

Landform steep minor valley sides of the Catbrook

Landcover mosaic of woodland and pasture with some bracken

Function of Area

Pastoral Arable Horticulture Recreation Other

Comments pasture

Pattern

Settlement pattern mix of traditional and more modern scattered rural dwellings around Barbadoes Green , one on skyline

Woodland cover strong woodland cover, mixed in places, with scrub invading pasture in places

Boundaries poorly defined irregular small-medium fields with outgrown hedges and trees

Presence of water Comments very small watercourses in places

Scale small- medium

Sense of enclosure enclosed

Diversity simple

Skyline

Prominence/ importance prominent

Complexity simple

Comments the valley sides form the skyline in the narrow valley, mostly with trees

Key views

To settlement -

From settlement the area forms the positive, attractive backcloth to the ribbon development in the valley floor

Landmarks -

Detractors -

Intervisibility

Site observation medium ...to key features ...from key place

Comments though steep slopes the area forms part of a narrow wooded valley with limited wider visibility except to the south over the Wye

Tranquillity

Noise sources people

Views of development one side 180

Presence of people infrequent

Summary high/medium

Comments the area feels tranquil away from the settlement edge with the trees absorbing dwellings to an extent

Functional relationship of area...

...with settlement limited

...with wider landscape some

...with adjacent assessed area? some

Corridor?

Comments area appears to be managed as part of wider land holdings and has one public footpath linking into the settlement

Visual relationship of area...

...with settlement some ...with wider landscape some

...with adjacent assessed area? some Setting?

Comments the area forms part of the wooded rural approaches to the settlement from the north and forms part of the steep valley side backcloth to the valley floor

Are adjacent assessed areas mutually reliant...

... visually? ...functionally?

Comments -

Settlement edge

Pre C20 edge C20-21 edge

Nature of edge negative Form of edge smooth/linear

Comments linear estates in valley floor are integrated to an extent by planting but have had an adverse effect on what was an unspoilt valley bottom

Receptors

Receptors	Sensitivity
-----------	-------------

rural residents	high
-----------------	------

urban residents	high
-----------------	------

roads/rail/cycleways	medium
----------------------	--------

long distance/public footpaths	high
--------------------------------	------

Comments the main receptors are rural residents within the area, adjacent settlement dwellings and users of the valley road and public footpaths

Other

Other factors -

Potential Improvements -

Summary

Key characteristics Steep sided valley sides of the Wye and Angiddy valleys.
 Strong mixed woodland cover and treed boundaries in small pasture fields which are being encroached upon by scrub.
 Limited scattered rural dwellings on hillsides and Angiddy valley.
 The area forms part of the steep wooded rural backcloth to the settlement important in many key views.
 In Wye Valley AONB and Lower Wye Valley Landscape of Outstanding Historic Interest and covered mostly by Conservation Area.

Landscape sensitivity high

The area has high sensitivity as it forms the attractive and intrinsically valuable wooded backcloth to the sensitive settlement of Tintern in the AONB. It also forms the skyline and features in many key views.

Housing capacity medium/low

The area has medium/low capacity for housing as its slopes and skyline are highly visible to the adjacent valley and the woodland and small pastures are attractive and positive elements in the AONB landscape which housing would adversely affect.

Combined Character Area

CCA Number CCA23

LANDMAP Context

	Aspect area value
Geological landscapes	85% outstanding, 15% high
Landscape habitats	25% outstanding, 75% moderate
Historical landscapes	100% outstanding
Cultural landscapes	85% outstanding, 8% high, 7% moderate
Visual and sensory	100% outstanding

Visual and sensory sensitivity

Designations

Landscape designations in Wye Valley AONB
comments

National Park AONB YES SLA

Historic/archaeology designations comments mostly in Conservation Area; fully in Lower Wye Valley Landscape of Outstanding Historic Interest; listed buildings at St Mary's Chapel and Angiddy valley and adjacent in settlement; Abbey Wireworks SAM in Angiddy valley

Landscape of Hist. Interest YES **Historic Parks and Gardens** WHS YES

Hist.Parks and Gardens essential setting

SAM YES **Conservation Area** YES **Listed Building** YES

Biodiversity designations comments -

SAC **NNR** **SINC** **SSSI** YES **RAMSAR**

Other

Country Park **National Trail** **National Cycle Route**

Floodplain (100yr) YES

Characteristics

Landform steep sided valley sides of the Wye and Angiddy valleys

Landcover strong mixed woodland cover and small pasture enclaves with scrub encroachment

Function of Area

Pastoral Arable Horticulture Recreation Other

Comments woodland and pasture

Pattern

Settlement pattern limited scattered rural dwellings on hillsides and Angiddy valley

Woodland cover strong mixed woodland cover and treed boundaries

Boundaries trees in outgrown pasture boundaries in small fields

Presence of water Comments River Angiddy

Scale medium

Sense of enclosure enclosed by trees although valley sides are exposed to view

Diversity diverse

Skyline

Prominence/ importance very prominent Complexity simple

Comments the valley sides form a distinct skyline visible from the valley floor

Key views

To settlement the area forms the backcloth to many key views to the settlement from the river and valley floor

From settlement the area forms the backcloth to many key views from the settlement

Landmarks the ruined but listed St Annes Chapel

Detractors -

Intervisibility

Site observation high ...to key features ...from key place

Comments the Wye valley sides are highly intervisible with the valley floor and other side of the valley

Tranquillity

Noise sources roads

Views of development one side 180 Presence of people infrequent

Summary high/medium

Comments the area is generally tranquil although some traffic noise is audible from A466

Functional relationship of area...

...with settlement some ...with wider landscape some

...with adjacent assessed area? some Corridor?

Comments area appears to be managed as part of wider land holdings and has public footpaths linking into the settlement

Visual relationship of area...

...with settlement significant ...with wider landscape some

...with adjacent assessed area? some Setting?

Comments the area forms part of the steep wooded rural backcloth to the settlement

Are adjacent assessed areas mutually reliant...

... visually? ...functionally?

Comments -

Settlement edge

Pre C20 edge C20-21 edge

Nature of edge neutral Form of edge moderately indented

Comments the settlement pattern is intermittent along the A466 and has varied character, some positive, generally sitting into the base of the hill and not encroaching up the slopes

Receptors

Receptors	Sensitivity
urban residents	high/medium
rural residents	high/medium
long distance/public footpaths	high
roads/rail/cycleways	medium

Comments the main receptors are rural residents within the area, adjacent settlement dwellings and users of the A466 road and public footpaths

Other

Other factors -

Potential Improvements improve Abbey Wireworks interpretation if appropriate

Summary

Key characteristics Upper slopes of Wye Valley and the steep sided Angiddy valley. Strong mixed woodland cover and small pasture enclaves. Settlement concentrated in the Angiddy valley but with small isolated clusters on hillsides. The area forms part of the steep wooded rural backcloth to the Angiddy valley settlement. In Wye Valley AONB and Lower Wye Valley Landscape of Outstanding Historic Interest. Abbey Wireworks SAM and listed building in Angiddy valley.

Landscape sensitivity high

The area has high sensitivity as it forms the attractive and intrinsically valuable upper wooded backcloth to the Wye and to the Angiddy valley in the AONB.

Housing capacity medium/low

The area has medium/low capacity for housing as its wooded slopes are attractive and positive elements in the AONB landscape which housing would adversely affect. The area is also divorced from Tintern and the Angiddy valley settlement has reached capacity in its confined location.

Combined Character Area

CCA Number CCA23 with some CCA25

LANDMAP Context

Aspect area value

Geological landscapes 70% outstanding, 30% moderate

Landscape habitats 15% outstanding, 85% moderate

Historical landscapes 100% outstanding

Cultural landscapes 92% outstanding, 8% moderate

Visual and sensory 100% outstanding

Visual and sensory sensitivity

Designations

Landscape designations in Wye Valley AONB
comments

National Park AONB YES SLA

Historic/archaeology designations comments in Lower Wye Valley Landscape of Outstanding Historic Interest; Abbey Wireworks SAM and listed building in Angiddy valley

Landscape of Hist. Interest YES Historic Parks and Gardens WHS YES

Hist.Parks and Gardens essential setting

SAM YES Conservation Area YES Listed Building YES

Biodiversity designations comments Barbadoes Hill grassland SINC

SAC NNR SINC YES SSSI RAMSAR

Other

Country Park National Trail National Cycle Route

Floodplain (100yr) YES

Characteristics

Landform upper slopes of Wye Valley and the steep sided Angiddy valley

Landcover strong mixed woodland cover and small pasture enclaves

Function of Area

Pastoral Arable Horticulture Recreation Other

Comments woodland and pasture

Pattern

Settlement pattern settlement concentrated in the Angiddy valley but with small isolated clusters on hillsides

Woodland cover strong mixed woodland cover with few enclosures

Boundaries woods enclose small pasture enclosures

Presence of water Comments River Angiddy

Scale medium

Sense of enclosure very enclosed

Diversity simple

Skyline

Prominence/ importance prominent Complexity simple

Comments from some viewpoints up valley sides the area may form the skyline

Key views

To settlement glimpse views may be possible from area to the settlement

From settlement important wooded setting to linear Angiddy settlement

Landmarks -

Detractors -

Intervisibility

Site observation medium ...to key features ...from key place

Comments the upper valley sides are visible across the valley at a distance

Tranquillity

Noise sources roads

Views of development some Presence of people occasional

Summary high/medium

Comments the area is tranquil due to limited access outside the Angiddy valley and strong tree cover

Functional relationship of area...

...with settlement limited ...with wider landscape some

...with adjacent assessed area? some Corridor?

Comments area appears to be managed as part of wider land holdings and has public footpaths ultimately linking into the settlement

Visual relationship of area...

...with settlement some ...with wider landscape some

...with adjacent assessed area? some Setting?

Comments the area forms part of the steep wooded rural backcloth to the Angiddy valley settlement

Are adjacent assessed areas mutually reliant...

... visually? ...functionally?

Comments -

Settlement edge

Pre C20 edge C20-21 edge

Nature of edge neutral Form of edge moderately indented

Comments the Angiddy settlement is highly linear constrained by the river, slopes and the roads

Receptors

Receptors	Sensitivity
rural residents	high
long distance/public footpaths	high
roads/rail/cycleways	medium

Comments the main receptors are rural residents within the area and users of the valley road and public footpaths

Other

Other factors -

Potential Improvements improve Abbey Wireworks interpretation if appropriate

Summary

Key characteristics Valley floor and floodplain adjacent to river. Medium sized pasture fields with mix of low cut and outgrown hedges and some riparian vegetation. The area forms part of the open rural approaches to the settlement from the south and acts as part of the setting of listed Tintern Abbey which is also a SAM. The area lies in the Wye Valley AONB and Lower Wye Valley Landscape of Outstanding Historic Interest and lies partly within the Conservation Area.

Landscape sensitivity high

The area is high sensitivity as it forms the relatively open setting of Tintern Abbey within the AONB and is partly within the Conservation Area.

Housing capacity low

The area is low capacity for housing as it forms the relatively open setting of Tintern Abbey within the AONB.

Combined Character Area

CCA Number CCA23

LANDMAP Context

	Aspect area value
Geological landscapes	20% outstanding, 80% high
Landscape habitats	85% outstanding, 15% moderate
Historical landscapes	100% outstanding
Cultural landscapes	100% outstanding
Visual and sensory	100% outstanding

Visual and sensory sensitivity

Designations

Landscape designations comments in Wye Valley AONB

National Park AONB YES SLA

Historic/archaeology designations comments adjacent to Tintern Abbey which is a SAM and listed; part within Conservation Area; in Lower Wye Valley Landscape of Outstanding Historic Interest

Landscape of Hist. Interest YES Historic Parks and Gardens WHS YES

Hist.Parks and Gardens essential setting

SAM YES Conservation Area YES Listed Building

Biodiversity designations comments the south east field is in Lower Wye SSSI and River Wye pSAC and SSSI runs adjacent

SAC YES NNR SINC SSSI YES RAMSAR

Other

Country Park National Trail National Cycle Route

Floodplain (100yr) YES

Characteristics

Landform valley floor and floodplain adjacent to river with small steep slope to road

Landcover pasture and deciduous woodland

Function of Area

Pastoral Arable Horticulture Recreation Other

Comments pasture

Pattern

Settlement pattern none

Woodland cover deciduous woodland on steep slopes with limited riparian vegetation

Boundaries medium sized fields with mix of low cut and outgrown hedges

Presence of water Comments River Wye adjacent

Scale medium

Sense of enclosure enclosed by valley sides and woodland but moderately open in valley floor

Diversity simple

Skyline

Prominence/ importance not applicable Complexity

Comments -

Key views

To settlement A466 approaches to settlement- glimpses of Tintern Abbey

From settlement views out from Tintern Abbey along unspoilt valley floor

Landmarks Tintern Abbey adjacent

Detractors -

Intervisibility

Site observation medium ...to key features ...from key place

Comments open valley floor intervisible with valley sides and road to an extent

Tranquillity

Noise sources roads

Views of development one side 180 Presence of people infrequent

Summary high/medium

Comments the area is separated to an extent from the A466 and the view is dominated to the north by the abbey and elsewhere with trees and the river which makes for a tranquil, non-publicly accessible environment albeit visitors may intervene occasionally in the abbey grounds

Functional relationship of area...

...with settlement none ...with wider landscape some

...with adjacent assessed area? some Corridor?

Comments area appears to be managed as part of wider land holdings and as a corridor for the Wye with its floodplain but no public access

Visual relationship of area...

...with settlement significant ...with wider landscape some

...with adjacent assessed area? some Setting?

Comments the area forms part of the open rural approaches to the settlement from the south and acts as part of the setting of the abbey

Are adjacent assessed areas mutually reliant...

... visually? ...functionally?

Comments -

Settlement edge

Pre C20 edge C20-21 edge

Nature of edge positive Form of edge highly indented

Comments the abbey forms a visually arresting edge to the settlement

Receptors

Receptors	Sensitivity
-----------	-------------

viewpoints	high
------------	------

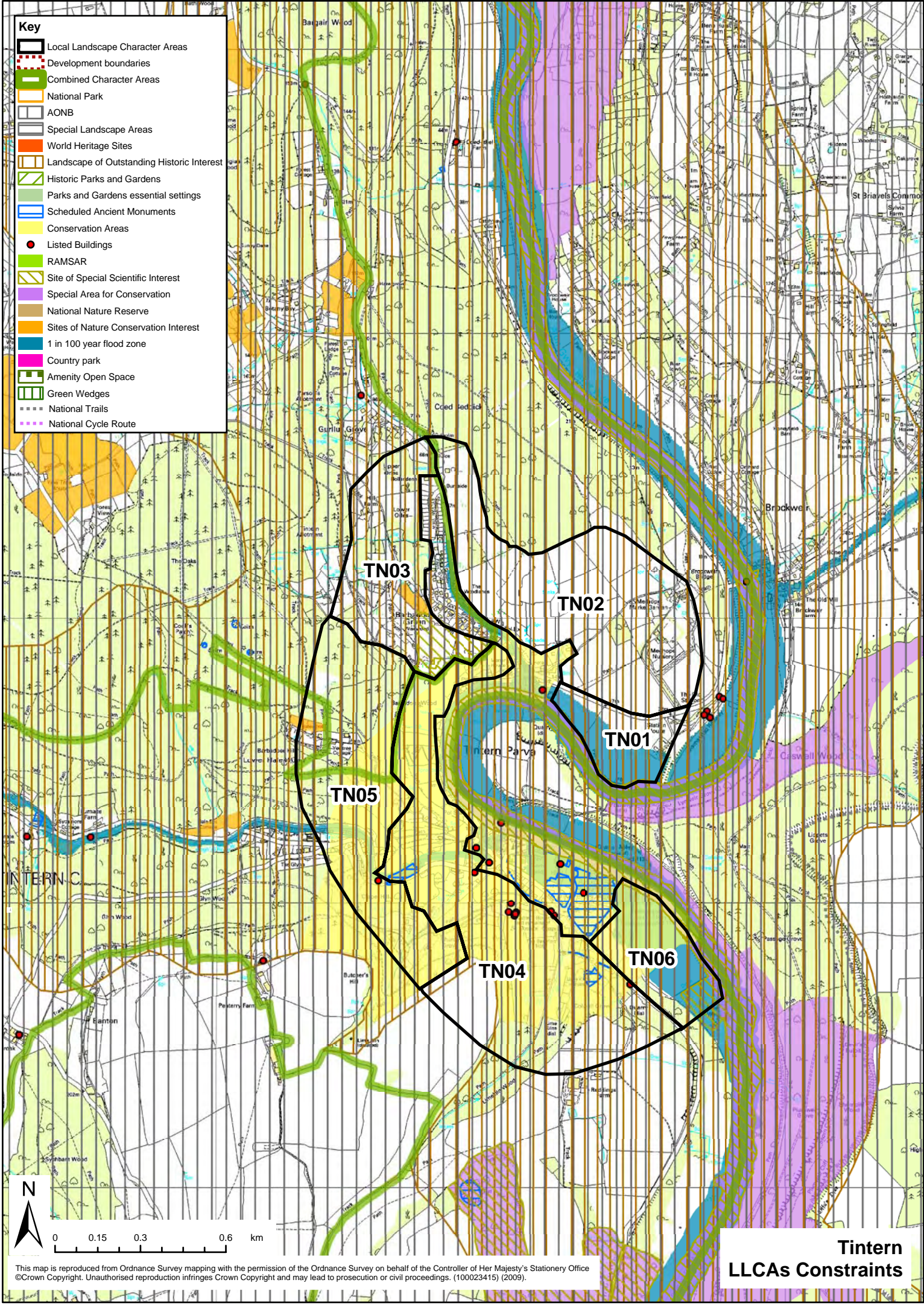
roads/rail/cycleways	high
----------------------	------

Comments the main receptors are visitors to the abbey and the A466

Other

Other factors -

Potential Improvements -



- Key**
- Local Landscape Character Areas
 - Development boundaries
 - Combined Character Areas
 - National Park
 - AONB
 - Special Landscape Areas
 - World Heritage Sites
 - Landscape of Outstanding Historic Interest
 - Historic Parks and Gardens
 - Parks and Gardens essential settings
 - Scheduled Ancient Monuments
 - Conservation Areas
 - Listed Buildings
 - RAMSAR
 - Site of Special Scientific Interest
 - Special Area for Conservation
 - National Nature Reserve
 - Sites of Nature Conservation Interest
 - 1 in 100 year flood zone
 - Country park
 - Amenity Open Space
 - Green Wedges
 - National Trails
 - National Cycle Route

TN03

TN02

TN01

TN05

TN04

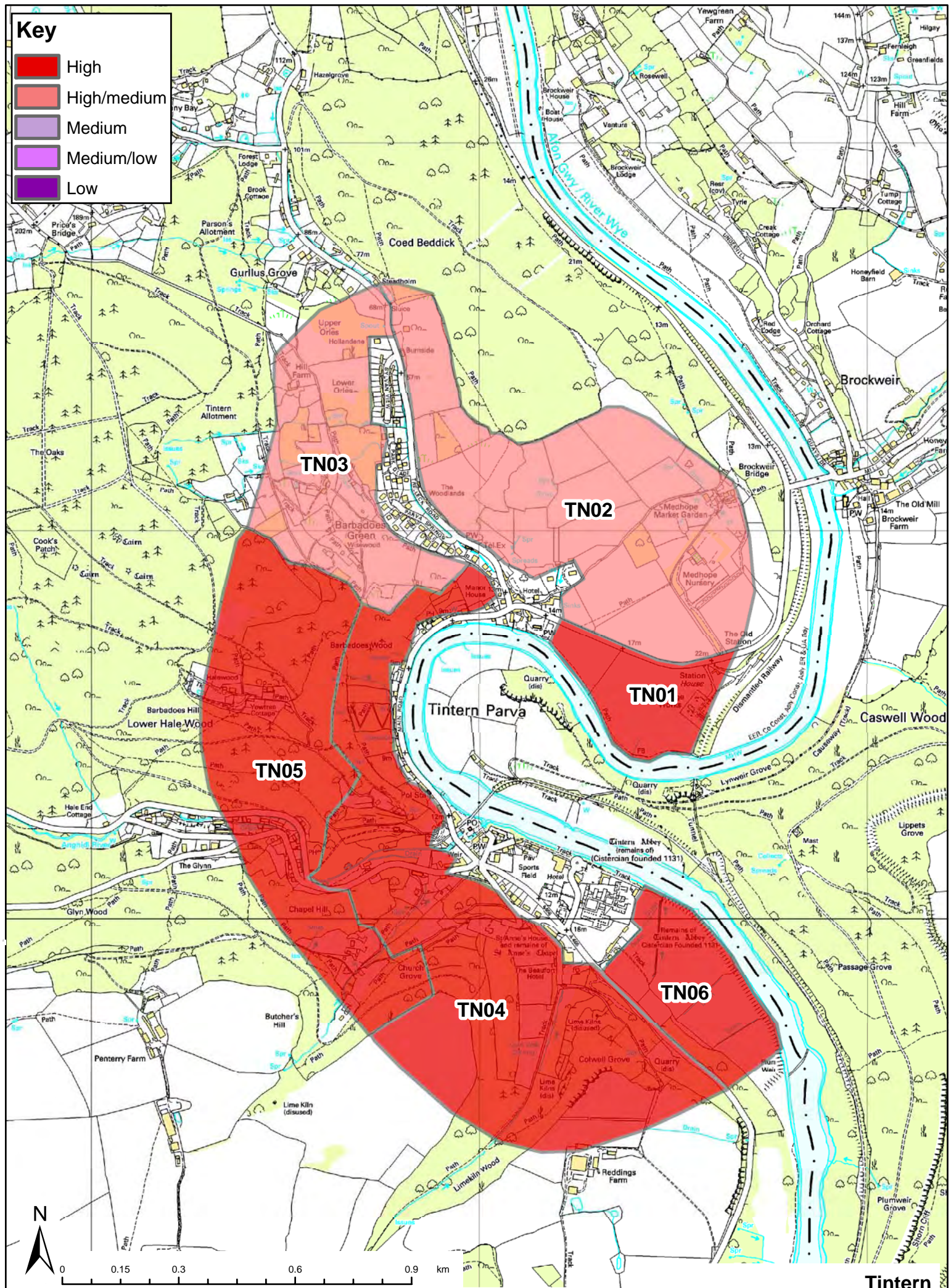
TN06



0 0.15 0.3 0.6 km

**Tintern
LLCAs Constraints**

This map is reproduced from Ordnance Survey mapping with the permission of the Ordnance Survey on behalf of the Controller of Her Majesty's Stationery Office ©Crown Copyright. Unauthorised reproduction infringes Crown Copyright and may lead to prosecution or civil proceedings. (100023415) (2009).



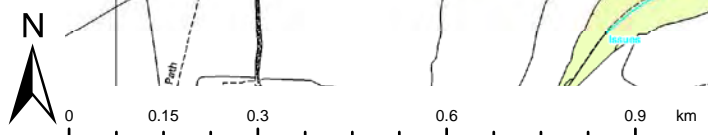
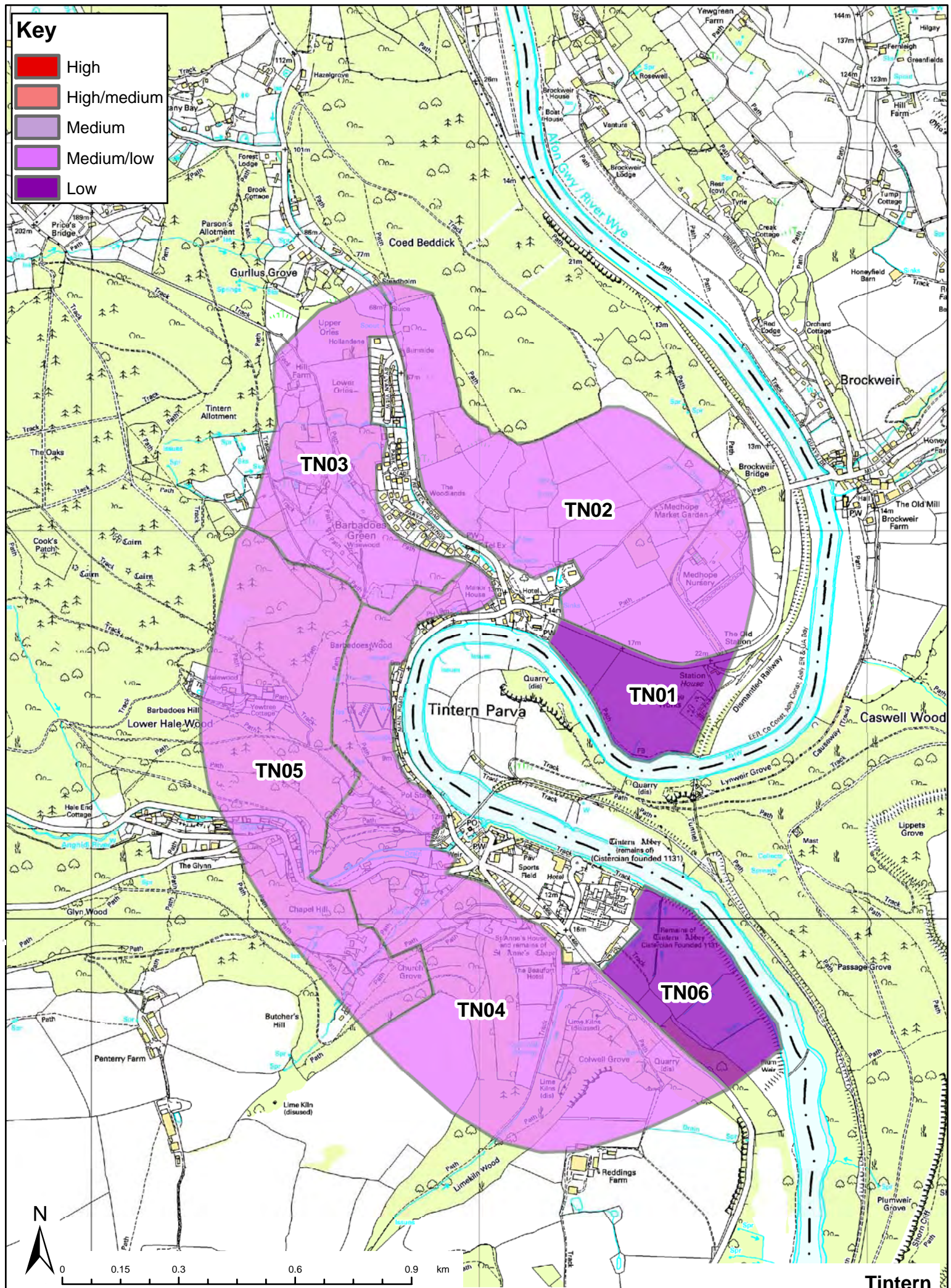
Tintern

Landscape sensitivity of LLCAs

This map is reproduced from Ordnance Survey mapping with the permission of the Ordnance Survey on behalf of the Controller of Her Majesty's Stationery Office ©Crown Copyright. Unauthorised reproduction infringes Crown Copyright and may lead to prosecution or civil proceedings. (100023415) (2009).

Key

- High
- High/medium
- Medium
- Medium/low
- Low



**Tintern
Housing capacity of LLCAs**

This map is reproduced from Ordnance Survey mapping with the permission of the Ordnance Survey on behalf of the Controller of Her Majesty's Stationery Office ©Crown Copyright. Unauthorised reproduction infringes Crown Copyright and may lead to prosecution or civil proceedings. (100023415) (2009).

Summary

Key characteristics Valley sides of Penarth Brook and tributaries sloping towards the settlement of Trellech.
 Mix of irregular and rectilinear medium-sized pastoral fields with hedges and occasional trees with distinctive linear patterns south of the village and along the brook.
 Riparian vegetation and occasional trees on boundaries.
 Valley corridors important to character of settlement south and east of Court Farm.
 The area provides the setting for the historic linear settlement, church and castle mound with open views to and from them.
 Views to church and open edge of historic settlement from west- B4293 and minor road.
 Historic features such as castle mound and church in attractive open, linear historic settlement form with some less positive modern expansion to north and south.
 Area in Wye Valley AONB.

Landscape sensitivity high

The area has high sensitivity as it forms part of the Conservation Area and its setting with sensitive historic features such as the church and castle adjacent and SAMs within the area including Harold's Stones. The Penarth Brook corridor also contributes to the character of the village which is essentially linear in character.

Housing capacity low

The area has low capacity for housing as it acts as the setting for the linear historic village and features and Conservation Area with the brook corridor and distinctive historic small scale field patterns contributing to the character of the village. Any housing would adversely affect this setting and character.

Combined Character Area

CCA Number CCA41 with some CCA30 plus a bit of CCA26

LANDMAP Context

	Aspect area value
Geological landscapes	100% moderate
Landscape habitats	100% moderate
Historical landscapes	20% outstanding, 80% high
Cultural landscapes	85% outstanding, 15% high
Visual and sensory	100% high

Visual and sensory sensitivity

Designations

Landscape designations comments in Wye Valley AONB

National Park AONB YES SLA

Historic/archaeology designations comments Conservation Area, Medieval House Sites SAM west of church, Tump Terret castle mound adjacent, listed buildings including St Nicholas Church in settlement adjacent, Harold's standing stones SAM.

Landscape of Hist. Interest **Historic Parks and Gardens** **WHS** YES

Hist.Parks and Gardens essential setting

SAM YES Conservation Area YES Listed Building

Biodiversity designations Wet Meadow, Trellech to north- part
comments

SAC NNR SINC YES SSSI RAMSAR

Other

Country Park National Trail National Cycle Route

Floodplain (100yr) YES

Characteristics

Landform valley sides of Penarth Brook and tributaries sloping towards the settlement of Trellech

Landcover predominantly pastoral with some arable

Function of Area

Pastoral Arable Horticulture Recreation Other

Comments predominantly pastoral with some arable

Pattern

Settlement pattern scattered farms and rural dwellings

Woodland cover riparian vegetation and occasional trees on boundaries

Boundaries mix of irregular and rectilinear medium-sized fields with hedges and occasional trees. Distinctive small scale linear field pattern along brook and south of the village [possibly associated with shrunken medieval village].

Presence of water Comments Penarth Brook and tributaries

Scale medium

Sense of enclosure moderately open due to limited tree cover and open valley sides

Diversity simple

Skyline

Prominence/ importance prominent Complexity simple

Comments gentle sloping skylines with trees and hedgerows

Key views

To settlement views to church and open edge of historic settlement from west- B4293 and minor road

From settlement view from church and footpath from edge of settlement west and from around southern edge of main village down Penarth Brook valley

Landmarks Church

Detractors -

Intervisibility

Site observation high ...to key features ...from key place

Comments valley sides intervisible with church and historic settlement edge

Tranquillity

Noise sources roads

Views of development one side 180 Presence of people infrequent

Summary high/medium

Comments the area is rural and only disturbed by a few minor roads and the B4293 which is relatively quiet with a highly rural village to one side

Functional relationship of area...

...with settlement some **...with wider landscape** some

...with adjacent assessed area? some **Corridor?**

Comments area managed as part of wider land holdings and as a corridor for the Penarth Brook and tributaries. Public footpaths link into the settlement.

Visual relationship of area...

...with settlement significant **...with wider landscape** some

...with adjacent assessed area? some **Setting?**

Comments the area provides the setting for the historic settlement, church and castle mound with open views to and from them

Are adjacent assessed areas mutually reliant...

... visually? **...functionally?**

Comments visually the valley corridor through the village is important

Settlement edge

Pre C20 edge **C20-21 edge**

Nature of edge positive **Form of edge** moderately indented

Comments historic features such as castle mound and church in attractive open, linear historic settlement form with some less positive modern expansion to north and south

Receptors

Receptors	Sensitivity
urban residents	high
rural residents	high
long distance/public footpaths	high
roads/rail/cycleways	medium

Comments the main receptors in this area are users of the church, visitors to the castle mound, walkers using footpaths and users of the B4293 and minor roads

Other

Other factors -

Potential Improvements -

Summary

Key characteristics Sloping minor valleys and hillside rising towards Beacon Hill to the east. Small and mainly medium-sized irregular pasture and arable fields with low cut hedges. Distinctive small scale linear field pattern along brook and south of the village [possibly associated with shrunken medieval village].
 Riparian vegetation with some trees on boundaries.
 Area forms part of the sloping backcloth to the village to the east providing the setting for the historic settlement and Chalybeate Well. Key views include from the Chalybeate Well towards the village and to and from Beacon Hill including footpaths to the village.
 Part in Conservation Area linking Chalybeate Well with village; Trellech shrunken medieval village adjacent [SAM] and possibly within area with excavations underway; listed buildings adjacent.
 Area in Wye Valley AONB.

Landscape sensitivity high/medium

The area has high/medium sensitivity as it is partly in the Conservation Area and provides an important visual connection between the Chalybeate Well and the settlement as well as the unspoilt eastern and southern backcloth to the settlement and Conservation Area. Small scale fields to the south appear to have historic interest.

Housing capacity low

The area has low capacity for housing as it forms the rising backcloth to the east of the settlement and Conservation area as well as the sensitive valley corridor running towards the Chalybeate Well which offer no opportunity for discreet housing. The small scale fields to the south appear to have historical interest and associations making them inappropriate for development.

Combined Character Area

CCA Number CCA41 plus a bit of CCA25 and CCA30

LANDMAP Context

	Aspect area value
Geological landscapes	100% moderate
Landscape habitats	100% moderate
Historical landscapes	7% outstanding, 93% high
Cultural landscapes	92% outstanding, 8% high
Visual and sensory	15% outstanding, 85% high

Visual and sensory sensitivity

Designations

Landscape designations comments in Wye Valley AONB

National Park AONB YES SLA

Historic/archaeology designations comments Part in Conservation Area linking Chalybeate Well with village; Trellech shrunken medieval village adjacent [SAM] and possibly within area with excavations underway; listed buildings adjacent

Landscape of Hist. Interest **Historic Parks and Gardens** **WHS** YES

Hist.Parks and Gardens essential setting

SAM YES Conservation Area YES Listed Building YES

Biodiversity designations -
comments

SAC NNR SINC YES SSSI RAMSAR

Other

Country Park National Trail National Cycle Route

Floodplain (100yr)

Characteristics

Landform sloping minor valleys and hillside rising towards Beacon Hill to the east

Landcover pasture with some arable

Function of Area

Pastoral Arable Horticulture Recreation Other

Comments pasture with some arable

Pattern

Settlement pattern none

Woodland cover riparian vegetation with some trees on boundaries

Boundaries small and mainly medium-sized irregular fields with low cut hedges Distinctive small scale linear field pattern along brook and south of the village [possibly associated with shrunken medieval village].

Presence of water Comments springs and minor watercourses including a Chalybeate Well- the Virtuous Well

Scale medium

Sense of enclosure moderately open

Diversity simple

Skyline

Prominence/ importance apparent Complexity simple

Comments forms part of the sloping backcloth to the village to the east

Key views

To settlement Chalybeate Well towards the village; from Beacon Hill including footpaths to the village

From settlement from listed buildings in village out and from B4293 eastwards

Landmarks key landmark is the church spire to the west; Chalybeate Well is discreet but an important feature

Detractors 20c dwellings near Chalybeate Well are minor detractors and poor introduction to the village

Intervisibility

Site observation high ...to key features ...from key place

Comments valley and hillsides intervisible with historic settlement edge

Tranquillity

Noise sources roads

Views of development one side 180 Presence of people infrequent

Summary high/medium

Comments the area is rural and only disturbed by a few minor roads and the B4293 which is relatively quiet with a rural village to one side

Functional relationship of area...

...with settlement some ...with wider landscape some

...with adjacent assessed area? some Corridor?

Comments area managed as part of wider land holdings and as a corridor for Penarth Brook tributaries especially from the Well. Public footpaths link into the settlement.

Visual relationship of area...

...with settlement some ...with wider landscape some

...with adjacent assessed area? some Setting?

Comments the area provides the setting for the historic settlement, Chalybeate Well with open views to and from Beacon Hill

Are adjacent assessed areas mutually reliant...

... visually? ...functionally?

Comments visually the valley corridor through the village is important

Settlement edge

Pre C20 edge C20-21 edge

Nature of edge neutral Form of edge moderately indented

Comments the historic edge of the village is positive but 20c development has either been negative [eg adjacent to Chalybeate Well] or neutral- recent development east of Church Street. The latter is poorly connected to the settlement with modern access road which does not reflect settlement pattern although discreet.

Receptors

Receptors	Sensitivity
urban residents	high/medium
long distance/public footpaths	high/medium
roads/rail/cycleways	medium
rural residents	high

Comments the main receptors in this area are settlement residents, visitors to the Chalybeate Well, walkers using footpaths and users of the B4293 and minor roads

Other

Other factors -

Potential Improvements -

Summary

Key characteristics Valley slopes sloping south towards settlement. Irregular medium-sized pastures with cut hedges. Woodland is limited to a block to the north west, stream riparian vegetation, trees along minor road and occasionally along hedgerows. Minor ridges form local skylines in places such as from B4293 and minor road. The area acts as setting to northern approaches allowing glimpse views to church spire. The settlement edge consists of a 20c small scale housing estate to the west and school with telephone exchange discreetly located to the east. Overall the settlement sits down in the landscape allowing the listed church and spire to the south to dominate. Area in Wye Valley AONB with wet meadow SINC lying in the area.

Landscape sensitivity high/medium

The area has high/medium sensitivity as it rises from the settlement and provides the rural setting to the approaches to the settlement and its Conservation Area with views to the church spire. It lies within the AONB and there is a SINC just north of the settlement.

Housing capacity medium/low

The area has medium/low capacity for housing as it is on rising land north of the settlement and any extension would be noticeable in views from the east and west and could affect ridge lines and views to the church within the AONB as well as potentially impinging on the SINC.

Combined Character Area

CCA Number CCA41 plus a bit of CCA25 and CCA26

LANDMAP Context

	Aspect area value
Geological landscapes	100% moderate
Landscape habitats	100% moderate
Historical landscapes	100% high
Cultural landscapes	90% outstanding, 10% high
Visual and sensory	15% outstanding, 85% high

Visual and sensory sensitivity

Designations

Landscape designations comments in Wye Valley AONB

National Park AONB YES SLA

Historic/archaeology designations comments Conservation Area to south

Landscape of Hist. Interest **Historic Parks and Gardens** WHS YES

Hist.Parks and Gardens essential setting

SAM **Conservation Area** YES **Listed Building**

Biodiversity designations comments Wet Meadow SINC

SAC **NNR** **SINC** YES **SSSI** **RAMSAR**

Other

Country Park

National Trail

National Cycle Route

Floodplain (100yr)

Characteristics

Landform valley slopes sloping south towards settlement

Landcover pasture with some arable

Function of Area

Pastoral **Arable** **Horticulture** **Recreation** **Other**

Comments pasture with some arable

Pattern

Settlement pattern farm complexes

Woodland cover woodland block, stream riparian vegetation, trees along minor road and occasionally along hedgerows

Boundaries irregular medium-sized pastures with cut hedges

Presence of water **Comments** tributaries of Penarth Brook

Scale medium

Sense of enclosure moderate

Diversity simple

Skyline

Prominence/ importance apparent

Complexity simple

Comments minor ridges form local skylines in places such as from B4293 and minor road

Key views

To settlement from approach roads towards church spire

From settlement -

Landmarks church spire to the south

Detractors -

Intervisibility

Site observation medium

...to key features **...from key place**

Comments intervisible with surrounding valley sides

Tranquillity

Noise sources roads

Views of development one side 180

Presence of people infrequent

Summary high/medium

Comments the area is rural and only disturbed by a minor road and the B4293 which is relatively quiet with a rural village to one side

Functional relationship of area...

...with settlement some

...with wider landscape some

...with adjacent assessed area? some

Corridor?

Comments area managed as part of wider land holdings with public footpaths linking into the settlement.

Visual relationship of area...

...with settlement some

...with wider landscape some

...with adjacent assessed area? some **Setting?**

Comments area acts as setting to northern approaches allowing glimpse views to church spire

Are adjacent assessed areas mutually reliant...

... visually? ...functionally?

Comments -

Settlement edge

Pre C20 edge **C20-21 edge**

Nature of edge neutral **Form of edge** moderately indented

Comments edge of 20c small scale housing estate to the west and school with telephone exchange discreetly located to the east

Receptors

Receptors

Sensitivity

urban residents high/medium

roads/rail/cycleways high/medium

long distance/public footpaths high

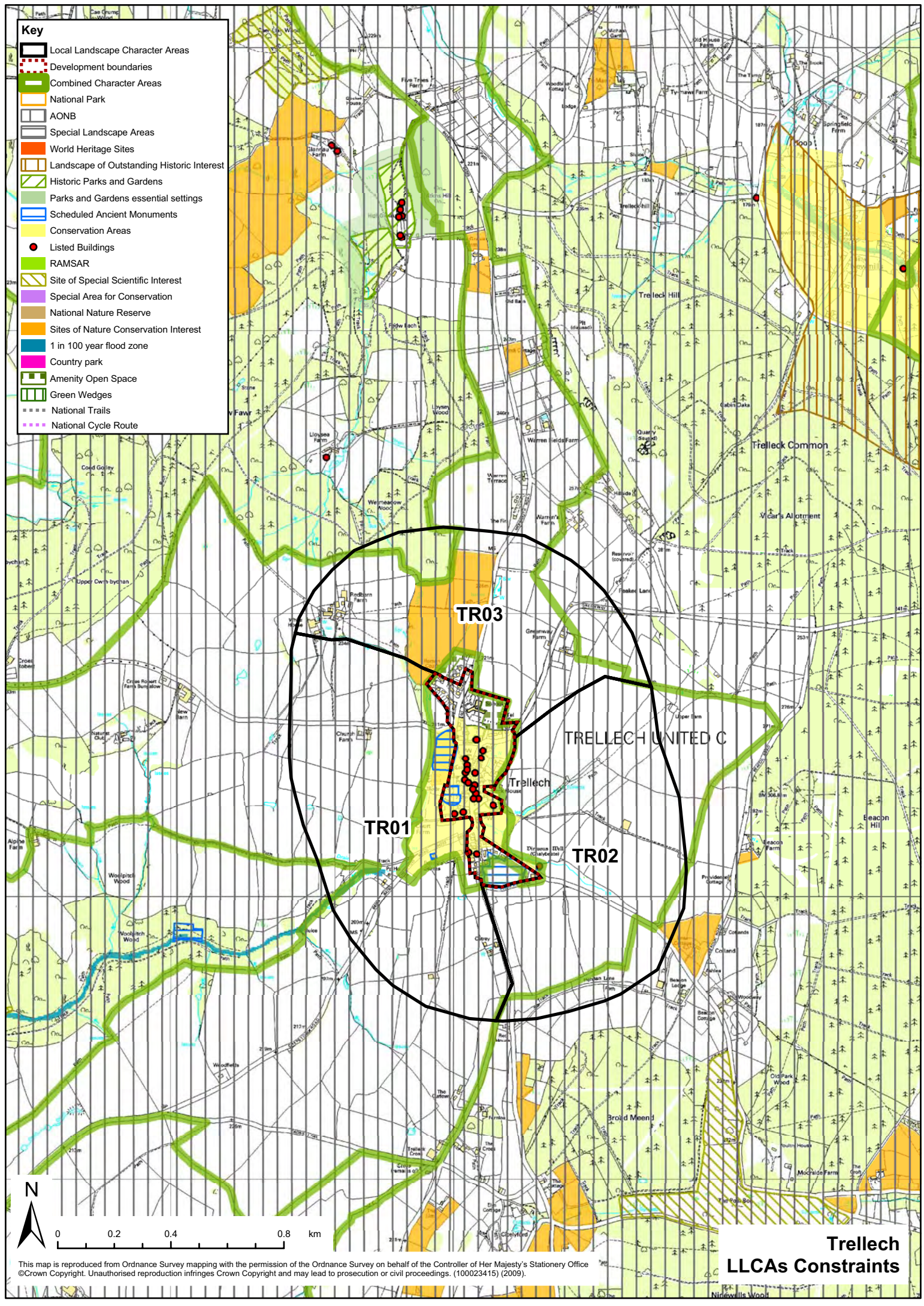
rural residents high

Comments the main receptors in this area are settlement residents, walkers using footpaths and users of the B4293 and minor roads as well as farmstead residents

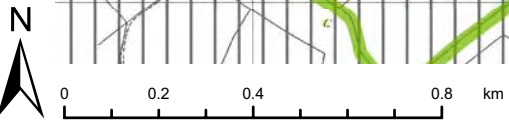
Other

Other factors -

Potential Improvements -



- Key**
- Local Landscape Character Areas
 - Development boundaries
 - Combined Character Areas
 - National Park
 - AONB
 - Special Landscape Areas
 - World Heritage Sites
 - Landscape of Outstanding Historic Interest
 - Historic Parks and Gardens
 - Parks and Gardens essential settings
 - Scheduled Ancient Monuments
 - Conservation Areas
 - Listed Buildings
 - RAMSAR
 - Site of Special Scientific Interest
 - Special Area for Conservation
 - National Nature Reserve
 - Sites of Nature Conservation Interest
 - 1 in 100 year flood zone
 - Country park
 - Amenity Open Space
 - Green Wedges
 - National Trails
 - National Cycle Route

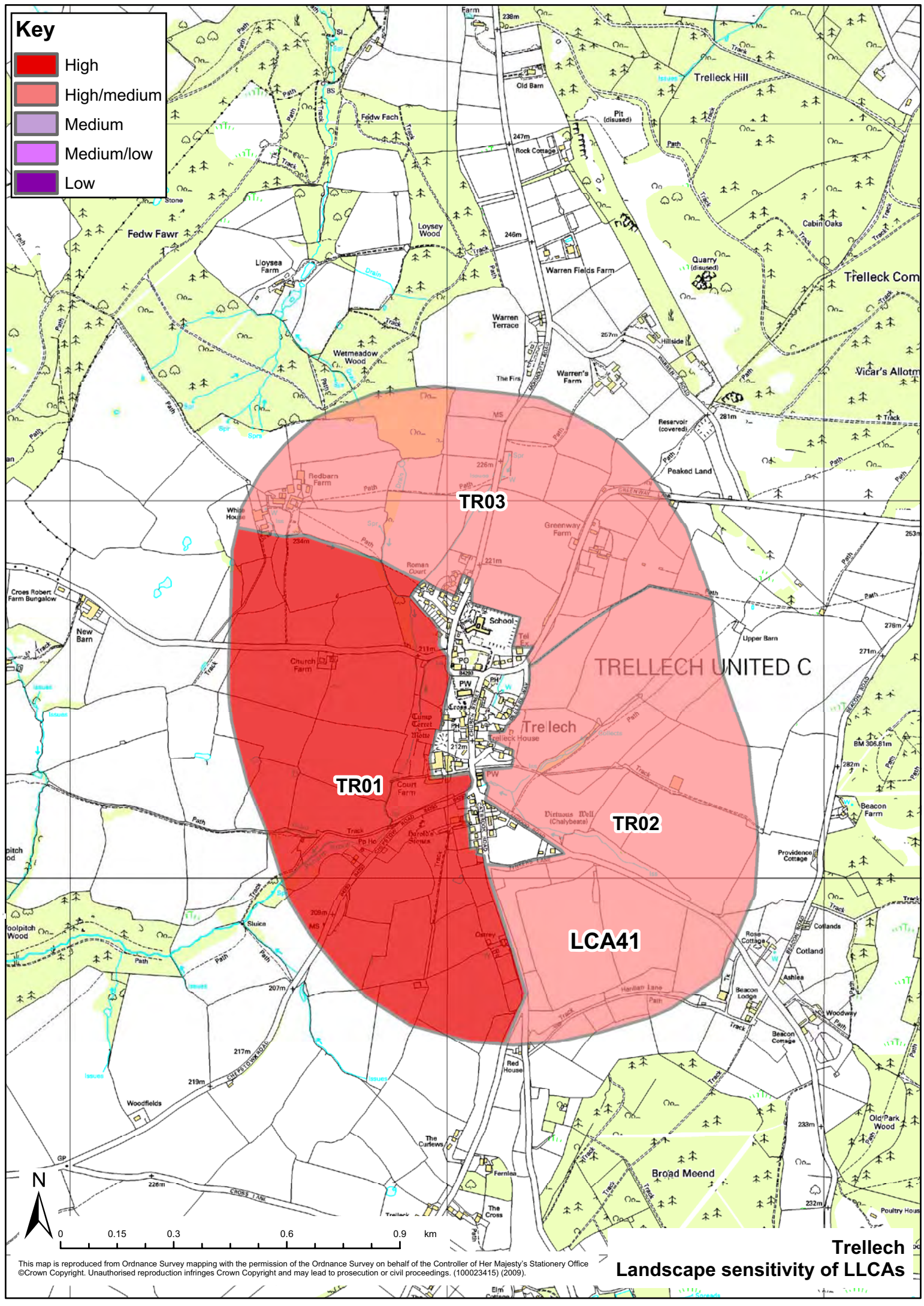


This map is reproduced from Ordnance Survey mapping with the permission of the Ordnance Survey on behalf of the Controller of Her Majesty's Stationery Office ©Crown Copyright. Unauthorised reproduction infringes Crown Copyright and may lead to prosecution or civil proceedings. (100023415) (2009).

**Trellech
LLCAs Constraints**

Key

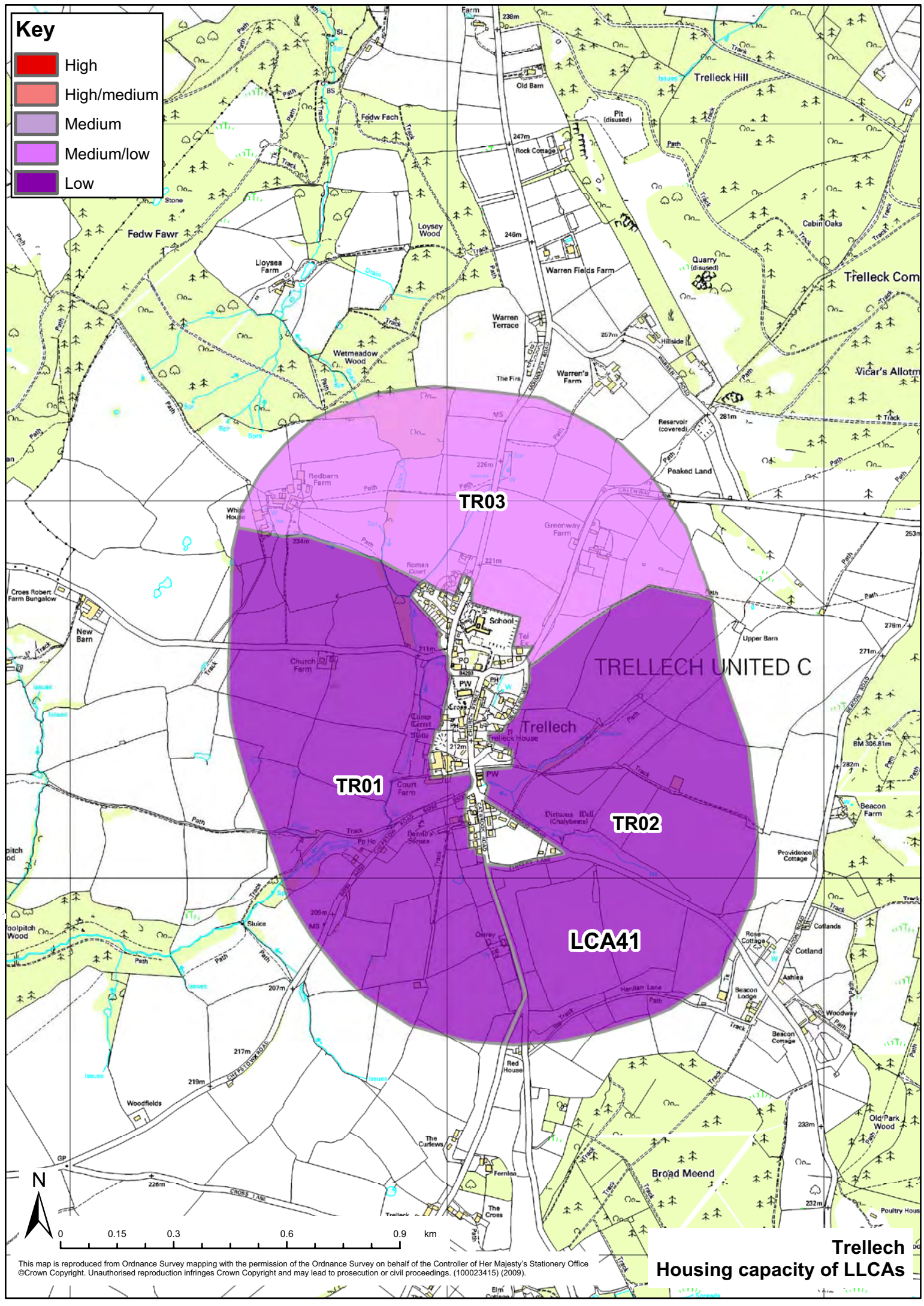
- High
- High/medium
- Medium
- Medium/low
- Low



This map is reproduced from Ordnance Survey mapping with the permission of the Ordnance Survey on behalf of the Controller of Her Majesty's Stationery Office ©Crown Copyright. Unauthorised reproduction infringes Crown Copyright and may lead to prosecution or civil proceedings. (100023415) (2009).

Key

- High
- High/medium
- Medium
- Medium/low
- Low



Trellech
Housing capacity of LLCA's

This map is reproduced from Ordnance Survey mapping with the permission of the Ordnance Survey on behalf of the Controller of Her Majesty's Stationery Office ©Crown Copyright. Unauthorised reproduction infringes Crown Copyright and may lead to prosecution or civil proceedings. (100023415) (2009).

Summary

Key characteristics Afon Monddu valley floor, floodplain and lower valley sides [to the west].
 Pasture on floodplain and mix of pasture and arable on lower valley sides to west.
 Mix of irregular and regular field boundaries of low cut and overgrown hedges.
 Tree cover is focussed on Afon Monddu and the railway embankment with copse to the west.
 Scattered rural dwellings and caravan park in countryside.
 The area defines the edge of the settlement and acts as the foreground for views across to the Black Mountains.
 The settlement on its western edge is primarily highly dispersed linear settlement along the line of the old road with pubs, chapel and various dwellings of sandstone or render. These have a subtle charm which is tempered by the adjacency of the realigned A465.
 Located in Brecon Beacons National Park with historic features including Tre Fedw motte and bailey, a SAM, Methodist Chapel, Crucorney and Trewyn registered historic parkland and essential setting.

Landscape sensitivity high/medium

The area has high/medium sensitivity as it is an essentially open valley floor and sides with river and floodplain that defines the western edge of the settlement and acts as the foreground to views to and from the Black Mountains. Views are possible from Offa's Dyke Path and the area lies within the Brecon Beacons National Park.

Housing capacity low

The area has low capacity for housing as it is the floodplain adjacent to the settlement and rising land west of the railway which is separated from the settlement and both of which act as setting to the Black Mountains and are located within the National Park. All settlement to the west of the A465 is traditional linear settlement which is of positive character.

Combined Character Area

CCA Number CCA55 plus a bit of CCA56

LANDMAP Context

	Aspect area value
Geological landscapes	100% moderate
Landscape habitats	100% moderate
Historical landscapes	100% high
Cultural landscapes	92% outstanding, 8% high
Visual and sensory	100% high

Visual and sensory sensitivity

Designations

Landscape designations in Brecon Beacons National Park
comments

National Park YES **AONB** **SLA**

Historic/archaeology designations comments Tre Fedw motte and bailey- SAM; Methodist Chapel, Crucorney adjacent; Trewyn registered historic parkland and essential setting.

Landscape of Hist. Interest **Historic Parks and Gardens** YES **WHS** YES

Hist.Parks and Gardens essential setting YES

SAM YES Conservation Area Listed Building

Biodiversity designations -
comments

SAC NNR SINC SSSI RAMSAR

Other

Country Park National Trail YES National Cycle Route

Floodplain (100yr) YES

Characteristics

Landform Afon Monddu valley floor, floodplain and lower valley sides [to the west]

Landcover pasture on floodplain and mix of pasture and arable on lower valley sides to west;
railway

Function of Area

Pastoral Arable Horticulture Recreation Other

Comments pasture and arable

Pattern

Settlement pattern scattered rural dwellings and caravan park

Woodland cover focussed on Afon Monddu and railway embankment with copse to the west

Boundaries mix of irregular and regular field boundaries of low cut and overgrown hedges

Presence of water Comments Afon Monddu

Scale medium

Sense of enclosure moderately enclosed by trees but open views along low cut hedges

Diversity diverse

Skyline

Prominence/ importance not applicable Complexity

Comments -

Key views

To settlement from Offa's Dyke Path and from A465

From settlement from settlement to imposing hills of Black Mountains

Landmarks -

Detractors A465 and caravan park is a minor detractor though quite well managed

Intervisibility

Site observation medium ...to key features ...from key place

Comments the area is intervisible with the Black Mountains, with the A465 and railway
line

Tranquillity

Noise sources roads other

Views of development one side 180 Presence of people frequent

Summary medium

Comments the area is open countryside but it is disturbed to the east by the A465 and
to an extent by the railway and the caravan park

Functional relationship of area...

...with settlement some ...with wider landscape some

...with adjacent assessed area? some Corridor?

Comments area managed as part of wider land holdings and with Offa's Dyke Path linking into the settlement. The area is a corridor for the Afon Monddu with its floodplain, and for transport- road and rail.

Visual relationship of area...

...with settlement significant ...with wider landscape some

...with adjacent assessed area? some Setting?

Comments the area defines the edge of the settlement and acts as the foreground for views across to the Black Mountains

Are adjacent assessed areas mutually reliant...

... visually? ...functionally?

Comments -

Settlement edge

Pre C20 edge C20-21 edge

Nature of edge neutral Form of edge highly indented

Comments the settlement on its western edge is primarily highly dispersed linear settlement along the line of the old road with pubs, chapel and various dwellings of sandstone or render. These have a subtle charm which is tempered by the adjacency of the realigned A465.

Receptors

Receptors	Sensitivity
urban residents	high/medium
rural residents	high/medium
long distance/public footpaths	high
roads/rail/cycleways	medium

Comments the area is overlooked by users of Offa's Dyke Path, the A465, railway and minor roads, village residents and residents in the open countryside

Other

Other factors -

Potential Improvements -

Summary

Key characteristics Low lying valley floor, floodplain and valley sides.
 Pasture and generally dispersed settlement with gardens.
 Very dispersed, linear settlement along old road, mainly of red sandstone with two chapels and with 20c block estate expanding Werngifford.
 Mix of irregular and regular field boundaries of low cut and overgrown hedges.
 Trees associated with watercourses, tramway embankment, roads, sharp changes in level and occasionally on boundaries
 The area provides the immediate setting for the settlement giving it a rural character and acts as the foreground for views across to the Black Mountains and hills to the east.
 In SLA and area historic features include Grosmont tramway embankment- SAM, Methodist Chapel, Crucorney and Llanfihangel Court registered park to the south with key view towards the area.

Landscape sensitivity high/medium

The area has a high/medium sensitivity as it is low lying pasture and paddocks with trees which form important green space between elements of the dispersed settlement of Pandy, essential to its character, and around Werngifford. The area is vulnerable to development pressure on the edge of the National Park and adjacent to the A465 and railway but is essentially open countryside. Llanfihangel Court to the south is a sensitive receptor.

Housing capacity medium/low

The area has medium/low capacity for housing it is important to maintain green gaps between existing development to retain its rural character and to avoid ribbon development along the A465. Werngifford is an estate which does not respond positively to the landscape and further development outside its boundaries would be highly undesirable.

Combined Character Area

CCA Number CCA55 plus a bit of CCA53

LANDMAP Context

	Aspect area value
Geological landscapes	15% outstanding, 10% high, 75% moderate
Landscape habitats	100% moderate
Historical landscapes	100% high
Cultural landscapes	92% outstanding, 8% high
Visual and sensory	100% high

Visual and sensory sensitivity

Designations

Landscape designations in SLA
 comments

National Park YES AONB SLA YES

Historic/archaeology designations comments Grosmont tramway embankment- SAM; Methodist Chapel, Crucorney; Llanfihangel Court registered park to the south with key view towards the area

Landscape of Hist. Interest Historic Parks and Gardens WHS YES

Hist.Parks and Gardens essential setting YES

SAM YES Conservation Area Listed Building YES

Biodiversity designations -
comments

SAC NNR SINC SSSI RAMSAR

Other

Country Park National Trail YES National Cycle Route

Floodplain (100yr) YES

Characteristics

Landform low lying valley floor, floodplain and valley sides

Landcover pasture and generally dispersed settlement with gardens

Function of Area

Pastoral Arable Horticulture Recreation Other

Comments pasture and scattered settlement with gardens

Pattern

Settlement pattern very dispersed, linear settlement, mainly of red sandstone with two chapels and with 20c block estate at Werngifford

Woodland cover trees associated with watercourses, tramway embankment, roads, sharp changes in level and occasionally on boundaries

Boundaries mix of irregular and regular field boundaries of low cut and overgrown hedges

Presence of water Comments minor watercourses running towards Afon Monddu

Scale medium to small in places associated with dwellings

Sense of enclosure moderately enclosed by trees and settlement as well as more widely by hills to east and west

Diversity diverse

Skyline

Prominence/ importance not applicable Complexity

Comments -

Key views

To settlement from Offa's Dyke Path and from A465

From settlement from settlement to imposing hills of Black Mountains

Landmarks minor landmarks are the two chapels

Detractors A465

Intervisibility

Site observation medium ...to key features ...from key place

Comments the area is intervisible with the Black Mountains, with the A465 and railway line

Tranquillity

Noise sources roads

Views of development many 270 Presence of people frequent

Summary medium

Comments the area is open countryside interspersed by settlement and disturbed by the A465 and to an extent by the railway

Functional relationship of area...

...with settlement significant ...with wider landscape some

...with adjacent assessed area? some Corridor?

Comments area managed as part of wider land holdings and with Offa's Dyke Path linking into the settlement. The area includes a corridor for transport- road

Visual relationship of area...

...with settlement significant ...with wider landscape some

...with adjacent assessed area? some Setting?

Comments the area provides the immediate setting for the settlement giving it a rural character and acts as the foreground for views across to the Black Mountains and hills to the east

Are adjacent assessed areas mutually reliant...

... visually? ...functionally?

Comments -

Settlement edge

Pre C20 edge C20-21 edge

Nature of edge Form of edge

Comments the settlement is primarily highly dispersed linear settlement along the line of the old road with pubs, chapel and various dwellings of red sandstone, some of fine character, or render. These have a subtle charm which is tempered by the adjacency of the realigned A465 cutting across the line of the old road. Wern Gifford is a contrast expanded as a 20c block estate with modern materials with some properties fronting the A465.

Receptors

Receptors	Sensitivity
urban residents	high/medium
rural residents	high/medium
roads/rail/cycleways	medium
long distance/public footpaths	high

Comments the area is overlooked by users of Offa's Dyke Path, the A465 and minor roads, village residents and residents in the open countryside

Other

Other factors -

Potential Improvements -

Summary

Key characteristics Sloping pastoral valley sides, steep in places.
 Medium-sized irregular fields with low cut hedges.
 Trees associated with watercourses, roads and occasionally on boundaries.
 Scattered rural dwellings with small linear settlement west of Penbiddle Farm.
 The area acts as the eastern backcloth to the settlement with upper slopes forming part of local skyline.
 Views from Offa's Dyke Path down towards settlement.
 The settlement is primarily highly dispersed linear settlement along the line of the old road and Grosmont tramway. These have a subtle charm which is tempered by Wern Gifford which is expanded as a 20c block estate with modern materials with some properties.
 In SLA with Brecon Beacons National Park to the south.

Landscape sensitivity high/medium

The area has high/medium sensitivity as it forms the highly visible sloping valley sides of open countryside which form the backcloth to the settlement and are intervisible with the National Park and to Offa's Dyke which passes through the area.

Housing capacity low

The area has low capacity for housing due to its exposed sloping valley sides intervisible with the National park and Offa's Dyke.

Combined Character Area

CCA Number CCA50 plus a bit of CCA55

LANDMAP Context

	Aspect area value
Geological landscapes	20% high, 80% moderate
Landscape habitats	100% moderate
Historical landscapes	100% high
Cultural landscapes	100% outstanding
Visual and sensory	100% high

Visual and sensory sensitivity

Designations

Landscape designations in SLA with Brecon Beacons National Park to the south
 comments

National Park YES AONB SLA YES

Historic/archaeology designations comments -

Landscape of Hist. Interest Historic Parks and Gardens WHS YES

Hist.Parks and Gardens essential setting

SAM YES Conservation Area Listed Building

Biodiversity designations comments -

SAC NNR SINC SSSI RAMSAR

Other

Country Park National Trail YES National Cycle Route

Floodplain (100yr)

Characteristics

Landform sloping valley sides, steep in places

Landcover pasture

Function of Area

Pastoral Arable Horticulture Recreation Other

Comments pasture

Pattern

Settlement pattern scattered rural dwellings with small linear settlement west of Penbiddle Farm

Woodland cover trees associated with watercourses, roads and occasionally on boundaries

Boundaries medium-sized irregular fields with low cut hedges and trees

Presence of water Comments small watercourse

Scale medium

Sense of enclosure generally open on valley sides

Diversity simple

Skyline

Prominence/ importance prominent Complexity simple

Comments upper slopes form part of local skyline to settlement to the east

Key views

To settlement views from Offa's Dyke Path down towards settlement

From settlement area forms eastern backcloth to settlement

Landmarks -

Detractors -

Intervisibility

Site observation high ...to key features ...from key place

Comments area intervisible with settlement, A465 and with National Park

Tranquillity

Noise sources roads

Views of development one side 180 Presence of people infrequent

Summary high/medium

Comments the area is generally tranquil although some traffic noise is audible from A465

Functional relationship of area...

...with settlement some ...with wider landscape some

...with adjacent assessed area? some Corridor?

Comments area managed as part of wider land holdings and with Offa's Dyke Path linking into the settlement

Visual relationship of area...

...with settlement some ...with wider landscape some

...with adjacent assessed area? some Setting?

Comments area forms eastern backcloth to settlement

Are adjacent assessed areas mutually reliant...

... visually? ...functionally?

Comments -

Settlement edge

Pre C20 edge C20-21 edge

Nature of edge neutral Form of edge moderately indented

Comments the settlement is primarily highly dispersed linear settlement along the line of the old road and Grosmont tramway. These have a subtle charm which is tempered by Wern Gifford which is expanded as a 20c block estate with modern materials with some properties.

Receptors

Receptors	Sensitivity
urban residents	high/medium
rural residents	high/medium
long distance/public footpaths	high
roads/rail/cycleways	medium

Comments the area is overlooked by users of Offa's Dyke Path, the A465 and minor roads, village residents and residents in the open countryside

Other

Other factors -

Potential Improvements -

Summary

Key characteristics The majority of the area is very gently sloping valley floor and floodplain of Afon Monddu.
Primarily pastoral with some arable with railway and road.
Riparian trees along watercourses and also trees along railway and road bound generally rectilinear medium-sized fields with low-cut hedges.
The area is intervisible with rising land of Black Mountains to the west but screened from the settlement by trees on the railway embankment
The majority of the area, to the west of the railway, is high/medium tranquillity.
The area lies in Brecon Beacons National Park to the west of the Afon Monddu and SLA to the east.
Trewyn registered parkland lies directly to the west.

Landscape sensitivity high/medium

The area has highly/medium sensitivity as it forms part of the open valley floor of the Afon Monddu separated from the settlement by the railway embankment and having strong intervisibility with the Black Mountains fringes and historic parkland. Part of the area is within the National Park.

Housing capacity low

The area has low capacity for housing as it forms open countryside in a river valley, partly the National Park, separated from the settlement by the railway.

Combined Character Area

CCA Number CCA49

LANDMAP Context

	Aspect area value
Geological landscapes	100% moderate
Landscape habitats	100% moderate
Historical landscapes	100% high
Cultural landscapes	92% outstanding, 8% high
Visual and sensory	100% high

Visual and sensory sensitivity

Designations

Landscape designations comments in Brecon Beacons National Park to the west of the Afon Monddu and SLA to the east

National Park YES AONB SLA YES

Historic/archaeology designations comments Trewyn registered parkland directly to the west

Landscape of Hist. Interest Historic Parks and Gardens YES WHS YES

Hist.Parks and Gardens essential setting

SAM Conservation Area Listed Building

Biodiversity designations comments -

SAC NNR SINC SSSI RAMSAR

Other

Country Park National Trail National Cycle Route

Floodplain (100yr) YES

Characteristics

Landform the majority of the area is very gently sloping valley floor and floodplain of Afon Monddu

Landcover primarily pastoral with some arable with railway and road

Function of Area

Pastoral Arable Horticulture Recreation Other

Comments primarily pastoral with some arable

Pattern

Settlement pattern rural dwellings and edge of settlement Pandy pub

Woodland cover riparian trees along watercourses including willows and also trees along railway and road

Boundaries generally rectilinear medium-sized fields with low-cut hedges

Presence of water Comments Afon Monddu and drain

Scale medium

Sense of enclosure medium small

Diversity simple

Skyline

Prominence/ importance not applicable Complexity

Comments -

Key views

To settlement views to the settlement are screened by trees along the railway embankment and alongside the river

From settlement the area is not generally visible from the settlement

Landmarks -

Detractors sewage works are a minor detractor

Intervisibility

Site observation medium ...to key features ...from key place

Comments the area is intervisible with rising land of Black Mountains to the west

Tranquillity

Noise sources roads other

Views of development some Presence of people infrequent

Summary high/medium

Comments the majority of the area, to the west of the railway, is high/medium tranquillity with the main road and settlement screened

Functional relationship of area...

...with settlement limited ...with wider landscape some

...with adjacent assessed area? some Corridor?

Comments area managed as part of wider land holdings and as a corridor for the Afon Monddu with its floodplain, and for transport- road and rail.

Visual relationship of area...

...with settlement limited ...with wider landscape some

...with adjacent assessed area? some Setting?

Comments the majority of the area forms part of the Afon Monddu visual corridor screened from the settlement by the railway

Are adjacent assessed areas mutually reliant...

... visually? ...functionally?

Comments -

Settlement edge

Pre C20 edge C20-21 edge

Nature of edge neutral Form of edge moderately indented

Comments northern edge of settlement with highly dispersed character of dwelling and pub is separated from the majority of this area by railway embankment

Receptors

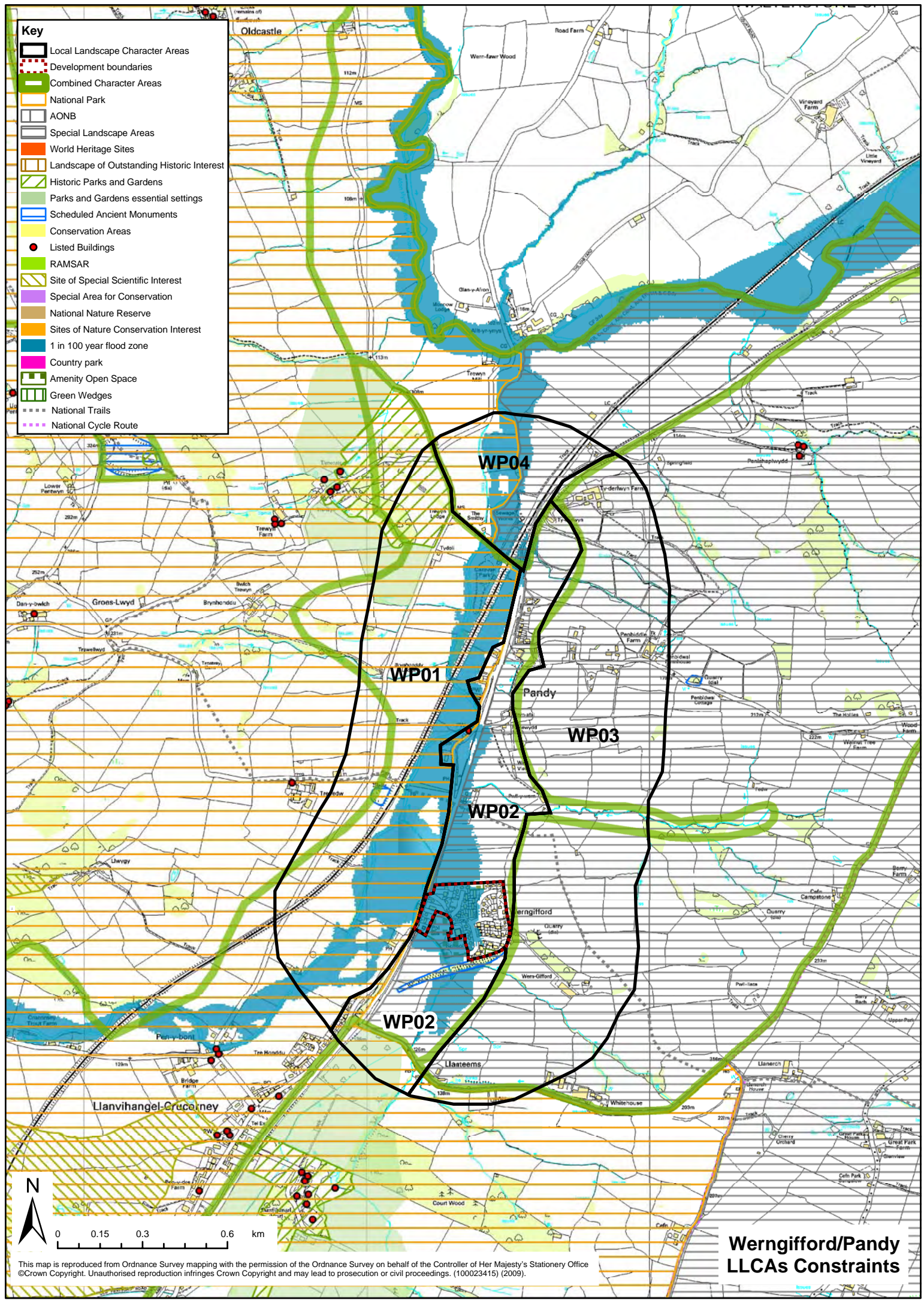
Receptors	Sensitivity
rural residents	high
long distance/public footpaths	high
roads/rail/cycleways	medium

Comments the main receptors in this area are walkers using footpaths and users of the minor road

Other

Other factors -

Potential Improvements -



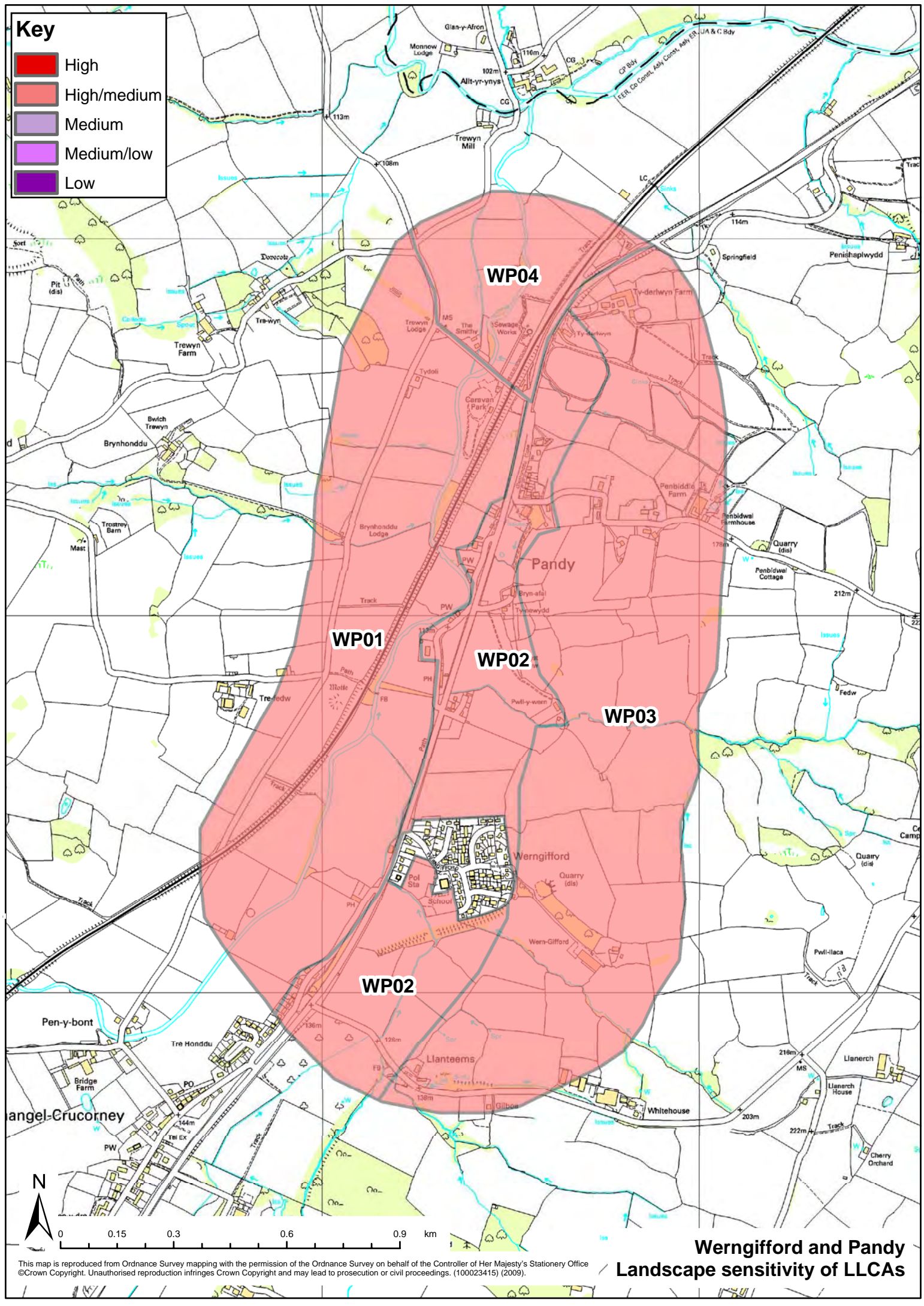
- Key**
- Local Landscape Character Areas
 - Development boundaries
 - Combined Character Areas
 - National Park
 - AONB
 - Special Landscape Areas
 - World Heritage Sites
 - Landscape of Outstanding Historic Interest
 - Historic Parks and Gardens
 - Parks and Gardens essential settings
 - Scheduled Ancient Monuments
 - Conservation Areas
 - Listed Buildings
 - RAMSAR
 - Site of Special Scientific Interest
 - Special Area for Conservation
 - National Nature Reserve
 - Sites of Nature Conservation Interest
 - 1 in 100 year flood zone
 - Country park
 - Amenity Open Space
 - Green Wedges
 - National Trails
 - National Cycle Route

**Werngifford/Pandy
LLCAs Constraints**

This map is reproduced from Ordnance Survey mapping with the permission of the Ordnance Survey on behalf of the Controller of Her Majesty's Stationery Office ©Crown Copyright. Unauthorised reproduction infringes Crown Copyright and may lead to prosecution or civil proceedings. (100023415) (2009).

Key

- High
- High/medium
- Medium
- Medium/low
- Low

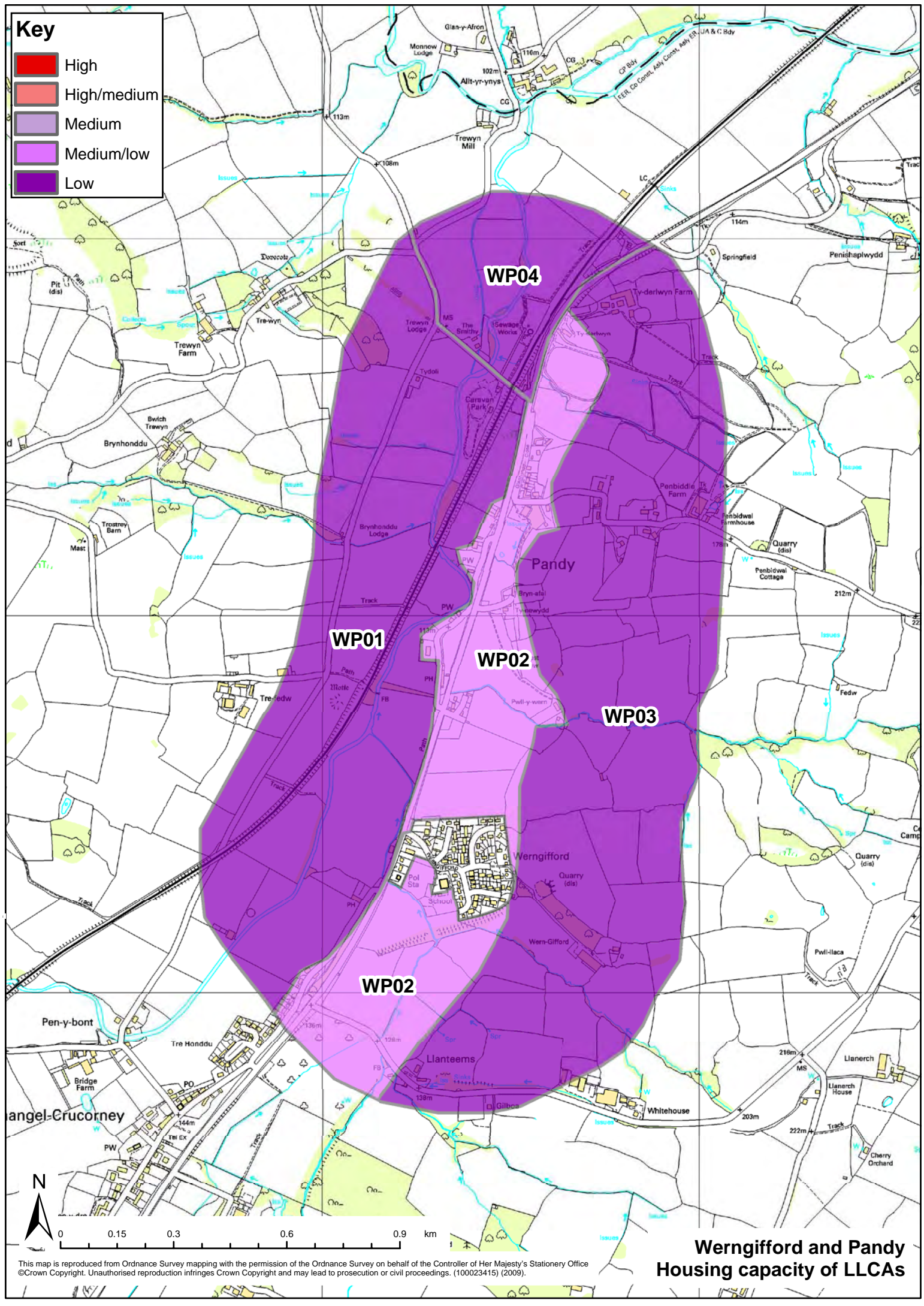


**Werngifford and Pandy
Landscape sensitivity of LLCAs**

This map is reproduced from Ordnance Survey mapping with the permission of the Ordnance Survey on behalf of the Controller of Her Majesty's Stationery Office ©Crown Copyright. Unauthorised reproduction infringes Crown Copyright and may lead to prosecution or civil proceedings. (100023415) (2009).

Key

- High
- High/medium
- Medium
- Medium/low
- Low



**Werngifford and Pandy
Housing capacity of LLCAs**

This map is reproduced from Ordnance Survey mapping with the permission of the Ordnance Survey on behalf of the Controller of Her Majesty's Stationery Office ©Crown Copyright. Unauthorised reproduction infringes Crown Copyright and may lead to prosecution or civil proceedings. (100023415) (2009).