

Summary

Key characteristics Head of valley with convex sides between the settlements with hillside facing north to east of Mynydd Bach.
 Irregular medium-sized fields with outgrown hedges/trees except along roads where there are cut hedges in places.
 Strong tree cover along field boundaries.
 Views across area between the settlements on their respective 'hilltops'.
 The area plays an important role in separating the two settlements and provides the green approach from the west.
 Poor incremental settlement edge on both sides, slightly mitigated by trees and hedges.
 SLA covers all the area and Green wedge covers the majority ie land between the two settlements; amenity open space south of Blethyn Close; Wye Valley AONB to the north
 Includes Shirenewton and Mynydd Bach Meadows SINC.

Landscape sensitivity high/medium

The area is high/medium sensitivity as it forms an important green wedge between the two settlements with some tree cover and intrinsic value in the meadow SINC and watercourse as well as including an exposed slope facing north.

Housing capacity medium/low

The area has medium/low capacity for housing as housing development would decrease the separation between the two settlements or would be exposed to view from the north.

Combined Character Area

CCA Number CCA19

LANDMAP Context

	Aspect area value
Geological landscapes	100% moderate
Landscape habitats	100% moderate
Historical landscapes	100% high
Cultural landscapes	100% outstanding
Visual and sensory	100% high

Visual and sensory sensitivity

Designations

Landscape designations comments SLA covers all the area and Green wedge covers the majority ie land between the two settlements; amenity open space south of Blethyn Close; Wye Valley AONB to the north

National Park AONB YES SLA YES

Historic/archaeology designations comments -

Landscape of Hist. Interest Historic Parks and Gardens WHS YES

Hist.Parks and Gardens essential setting

SAM Conservation Area YES Listed Building

Biodiversity designations comments Shirenewton and Mynydd Bach Meadows SINC

SAC NNR SINC YES SSSI RAMSAR

Other

Country Park National Trail National Cycle Route

Floodplain (100yr)

Characteristics

Landform head of valley with convex sides between the settlements with hillside facing north to east of Mynydd Bach

Landcover pasture

Function of Area

Pastoral **Arable** **Horticulture** **Recreation** **Other**

Comments pasture

Pattern

Settlement pattern none between settlements

Woodland cover strong tree cover along field boundaries

Boundaries irregular medium-sized fields with outgrown hedges/trees except along roads where there are cut hedges in places

Presence of water **Comments** springs and small tributary of Mounton Brook

Scale medium

Sense of enclosure exposed on top of valley sides but enclosed in valley bottom

Diversity simple

Skyline

Prominence/ importance prominent **Complexity** simple

Comments the ridgetop on the Mynydd Bach side is particularly prominent when viewed from the south and from the north

Key views

To settlement views across area between the settlements on their respective 'hilltops'

From settlement views across area between the settlements on their respective 'hilltops'

Landmarks -

Detractors -

Intervisibility

Site observation high ...to key features ...from key place

Comments the steep valley sides, ridge top and north facing slopes are visible from settlements and wider countryside to north and east

Tranquillity

Noise sources roads

Views of development many 270 **Presence of people** infrequent

Summary medium

Comments the area is rural but has views of the settlements on hilltops on two sides which reduce the feeling of tranquillity

Functional relationship of area...

...with settlement some

...with wider landscape some

...with adjacent assessed area? some

Corridor?

Comments area appears to be managed as part of wider land holdings with public footpaths linking into both settlements and acts as nature conservation and green corridor between settlements

Visual relationship of area...

...with settlement significant

...with wider landscape some

...with adjacent assessed area? some

Setting?

Comments the area plays an important role in separating the two settlements and provides the green approach from the west

Are adjacent assessed areas mutually reliant...

... visually? ...functionally?

Comments -

Settlement edge

Pre C20 edge C20-21 edge

Nature of edge negative

Form of edge moderately indented

Comments Mynydd Bach seems to have grown incrementally on an open hillside with little apparent hierarchy or clear design intention and Shirenewton's northern edge is similar though slightly better screened. Tree growth mitigates the effect slightly.

Receptors

Receptors

Sensitivity

urban residents

high/medium

long distance/public footpaths

high/medium

roads/rail/cycleways

medium

Comments the main receptors are overlooking residents, users of the footpaths into the settlement and adjacent road users

Other

Other factors -

Potential Improvements -

Summary

Key characteristics Broad rounded east-west ridge with slopes to the north and south. Rectilinear large fields to the south and irregular small-medium sized fields to the north on lower land with mix of low cut and outgrown hedges.
Mixed woodlands on lower slopes to the north and limited trees on boundaries.
Limited rural settlement- pub and farm.
The ridge line along Earlswood Road is prominent in views from the north and south.
The area forms the rising rural setting west of the settlement.
Edge of Conservation Area in area.
All the area is in SLA and there is amenity open space- playing fields.

Landscape sensitivity high/medium

The area has high/medium sensitivity as it forms an open and prominent ridge and ridge slopes to the south with high intervisibility and a rural semi-wooded area to the north, substantially separated from the settlement. The area to the south east is within the Conservation Area and the area is SLA.

Housing capacity low

The area has low capacity as it is an exposed ridge to the south, reinforcing and joining into the green corridor between the settlements and to the north is a highly rural area separated from the settlement.

Combined Character Area

CCA Number CCA20

LANDMAP Context

	Aspect area value
Geological landscapes	100% moderate
Landscape habitats	100% moderate
Historical landscapes	100% high
Cultural landscapes	100% outstanding
Visual and sensory	100% high

Visual and sensory sensitivity

Designations

Landscape designations comments all in SLA; amenity open space- playing fields; Wye Valley AONB adjacent to the north east

National Park AONB SLA YES

Historic/archaeology designations comments edge of Conservation Area in area

Landscape of Hist. Interest Historic Parks and Gardens WHS YES

Hist.Parks and Gardens essential setting

SAM Conservation Area YES Listed Building

Biodiversity designations comments -

SAC NNR SINC SSSI RAMSAR

Other

Country Park National Trail National Cycle Route YES

Floodplain (100yr)

Characteristics

Landform broad rounded east-west ridge with slopes to the north and south

Landcover pasture with arable

Function of Area

Pastoral **Arable** **Horticulture** **Recreation** **Other**

Comments pasture with arable

Pattern

Settlement pattern limited rural settlement- pub and farm

Woodland cover mixed woodlands on lower slopes to the north and limited trees on boundaries

Boundaries rectilinear large fields to the south and irregular small-medium sized fields to the north on lower land with mix of low cut and outgrown hedges

Presence of water **Comments** -

Scale medium

Sense of enclosure open to the south becoming more enclosed to the north

Diversity diverse

Skyline

Prominence/ importance prominent **Complexity** simple

Comments the ridge line along Earlswood Road is prominent in views from the north and south

Key views

To settlement views to edges of settlement from west

From settlement -

Landmarks -

Detractors settlement edge is prominent

Intervisibility

Site observation high ...to key features ...from key place

Comments the ridge slopes are widely visible to the north and south and long views are possible from the ridge top

Tranquillity

Noise sources roads

Views of development one side 180 **Presence of people** infrequent

Summary high/medium

Comments the area is rural and generally quiet but has views of the settlement to the east and the B4235 which reduce the feeling of tranquillity

Functional relationship of area...

...with settlement some **...with wider landscape** some

...with adjacent assessed area? some **Corridor?**

Comments area appears to be managed as part of wider land holdings with a public footpath linking into Mynydd Bach and includes playing fields by Shirenewton

Visual relationship of area...

...with settlement some ...with wider landscape some

...with adjacent assessed area? some Setting?

Comments the area forms the rising rural setting west of the settlement and adjoins and reinforces the green corridor between the settlements to the east

Are adjacent assessed areas mutually reliant...

... visually? ...functionally?

Comments -

Settlement edge

Pre C20 edge C20-21 edge

Nature of edge neutral Form of edge moderately indented

Comments a relatively new estate of large houses of limited character and gardens form a low density edge mitigated to an extent by a hedgerow but provides a non-traditional edge

Receptors

Receptors	Sensitivity
urban residents	high/medium
roads/rail/cycleways	high/medium
long distance/public footpaths	high
rural residents	high

Comments the main receptors are overlooking residents, users of the footpath into the settlement, road users and a few rural residents

Other

Other factors -

Potential Improvements -

Summary

Key characteristics Steep-sided valley of the Moulton Brook.
 Small- medium sized irregular fields with a mixed of low cut and outgrown hedges.
 Woodland cover on steep slopes and trees along riparian corridor with new small scale plantations.
 Dispersed rural settlement including farm and pub.
 The valley forms an important green girdle around the north of Mynydd Bach as well as an attractive setting and approach.
 The upper parts of the slopes adjacent to Mynydd Bach form the local skyline to the users of the B4235.
 Area in Wye Valley AONB and includes Llwyn y Celyn lowland SSSI and Mwyngloddfa Mynydd Bach SSSI and pSAC.

Landscape sensitivity high/medium

The area has high/medium sensitivity as it forms an attractive setting and steep slopes north and east of the settlement with intrinsically high value of watercourse, woodland, small scale pastures and valley floor.

Housing capacity low

The area has low capacity for housing development due to its steep slopes, exposed location in parts, attractive character which is presently containing the settlement and intrinsic value in nature conservation and landscape character terms.

Combined Character Area

CCA Number CCA20 with a bit of CCA19

LANDMAP Context

	Aspect area value
Geological landscapes	100% moderate
Landscape habitats	100% moderate
Historical landscapes	100% high
Cultural landscapes	100% outstanding
Visual and sensory	100% high

Visual and sensory sensitivity

Designations

Landscape designations comments in Wye Valley AONB

National Park AONB YES SLA YES

Historic/archaeology designations comments -

Landscape of Hist. Interest Historic Parks and Gardens WHS YES

Hist.Parks and Gardens essential setting

SAM Conservation Area Listed Building

Biodiversity designations comments Llwyn y Celyn lowland SSSI; Mwyngloddfa Mynydd Bach SSSI and pSAC

SAC YES **NNR** **SINC** **SSSI** YES **RAMSAR**

Other

Country Park **National Trail** **National Cycle Route**

Floodplain (100yr) YES

Characteristics

Landform steep-sided valley of the Moulton Brook

Landcover pasture and woodland

Function of Area

Pastoral **Arable** **Horticulture** **Recreation** **Other**

Comments pasture

Pattern

Settlement pattern dispersed rural settlement including farm and pub

Woodland cover woodland cover on steep slopes and trees along riparian corridor with new small scale plantations

Boundaries small- medium sized irregular fields with a mixed of low cut and outgrown hedges

Presence of water **Comments** Moulton Brook

Scale small- medium

Sense of enclosure enclosed valley generally with more exposure with elevation

Diversity diverse

Skyline

Prominence/ importance apparent **Complexity** simple

Comments the upper parts of the slopes adjacent to Mynydd Bach form the local skyline to the users of the B4235

Key views

To settlement the area provides the attractive setting for views to Mynydd Bach from the B4235 from the east

From settlement the valley acts as the scenic rural setting in views from the northern and eastern edge of Mynydd Bach

Landmarks -

Detractors -

Intervisibility

Site observation medium **...to key features** **...from key place**

Comments though the valley is intrinsically enclosed with low intervisibility the upper slopes and broader slopes to the west have greater intervisibility and the area is overlooked by Mynydd Bach

Tranquillity

Noise sources roads

Views of development one side 180 **Presence of people** infrequent

Summary high/medium

Comments the valley is essentially rural with very tranquil parts out of sight of the road and settlement

Functional relationship of area...

...with settlement some **...with wider landscape** some

...with adjacent assessed area? some **Corridor?**

Comments area appears to be managed as part of wider land holdings with public

footpaths linking into Mynydd Bach and the river and environs acting as a nature conservation corridor

Visual relationship of area...

...with settlement significant ...with wider landscape some

...with adjacent assessed area? some Setting?

Comments the valley forms an important green girdle around the north of Mynydd Bach as well as an attractive setting and approach

Are adjacent assessed areas mutually reliant...

... visually? ...functionally?

Comments -

Settlement edge

Pre C20 edge C20-21 edge

Nature of edge neutral Form of edge moderately indented

Comments intrinsically the estate on the hill appears out of place and inappropriate but the edges are mitigated to an extent by mature trees and hedges which mitigate it to an extent and defining a clear boundary

Receptors

Receptors	Sensitivity
urban residents	high/medium
rural residents	high/medium
long distance/public footpaths	high
roads/rail/cycleways	medium

Comments the main receptors are rural and overlooking residents, users of the footpaths into the settlement and road users

Other

Other factors -

Potential Improvements -

Summary

Key characteristics North facing ridge/valley side.
 Medium-large scale fields with mix of irregular and regular boundaries and mostly low cut hedge or fence boundaries with isolated trees.
 The ridge line is prominent in views from the north as well as being visible from the south.
 The area forms the open rural setting east of the settlement and adjoins and reinforces the green corridor between the settlements to the west.
 Recent expansion of Shirenewton is unattractive and inappropriate. Within SLA.

Landscape sensitivity high/medium

The area has high/medium sensitivity as it forms an open and prominent ridge and ridge slopes which form the rural approaches to the settlement with high intervisibility. The area is in an SLA.

Housing capacity low

The area has low capacity as it is an exposed ridge and ridge slopes, reinforcing and joining into the green corridor between the settlements to the west.

Combined Character Area

CCA Number CCA19

LANDMAP Context

	Aspect area value
Geological landscapes	100% moderate
Landscape habitats	100% moderate
Historical landscapes	100% high
Cultural landscapes	75% outstanding, 25% high
Visual and sensory	100% high

Visual and sensory sensitivity

Designations

Landscape designations comments in SLA

National Park AONB YES SLA YES

Historic/archaeology designations comments -

Landscape of Hist. Interest Historic Parks and Gardens WHS YES

Hist.Parks and Gardens essential setting

SAM Conservation Area Listed Building

Biodiversity designations comments -

SAC NNR SINC SSSI RAMSAR

Other

Country Park National Trail National Cycle Route YES

Floodplain (100yr)

Characteristics

Landform north facing ridge/valley side

Landcover pasture and arable

Function of Area

Pastoral **Arable** **Horticulture** **Recreation** **Other**

Comments pasture and arable

Pattern

Settlement pattern isolated rural dwelling

Woodland cover isolated trees on some boundaries

Boundaries medium-large scale fields with mix of irregular and regular boundaries and most;y low cut hedge or fence boundaries

Presence of water **Comments** -

Scale medium-large

Sense of enclosure open

Diversity simple

Skyline

Prominence/ importance prominent **Complexity** simple

Comments the ridge line is prominent in views from the north as well as being visible from the south

Key views

To settlement forms steep valley sides containing views from the east towards Mynydd Bach and forms rural approach for other eastern road approach

From settlement view from settlement edges towards simple hillside backcloth

Landmarks -

Detractors recent expansion of Shirenewton- unattractive timber decking/retaining walls visible from lower down slopes due to difficulty of establishing housing on slopes

Intervisibility

Site observation high **...to key features** **...from key place**

Comments the ridge slopes are widely visible to the north [and more locally to the south] and long views are possible from the upper slopes

Tranquillity

Noise sources roads

Views of development one side 180 **Presence of people** infrequent

Summary high/medium

Comments the area is rural and generally quiet but has views of the settlement to the west and the B4235 which reduce the feeling of tranquillity

Functional relationship of area...

...with settlement limited **...with wider landscape** some

...with adjacent assessed area? some **Corridor?**

Comments area appears to be managed as part of wider land holdings with a public footpath linking into Mynydd Bach

Visual relationship of area...

...with settlement some **...with wider landscape** some

...with adjacent assessed area? some

Setting?

Comments the area forms the open rural setting east of the settlement and adjoins and reinforces the green corridor between the settlements to the west

Are adjacent assessed areas mutually reliant...

... visually? ...functionally?

Comments -

Settlement edge

Pre C20 edge C20-21 edge

Nature of edge negative **Form of edge** moderately indented

Comments at Shirenewton a relatively new small cluster of small houses with large decks [The Gables] is a minor detractor with poor materials and ungainly decks and retaining walls on steep slopes beginning to intrude on the area while Thistledown Barn to the south forms a more natural edge. Mynydd Bach is appropriately contained by roads.

Receptors

Receptors

Sensitivity

urban residents

high/medium

roads/rail/cycleways

high/medium

long distance/public footpaths

high

rural residents

high

Comments the main receptors are overlooking residents, users of the footpath into the settlement, road users and limited rural residents

Other

Other factors -

Potential Improvements -

Summary

Key characteristics Ridge valley slopes generally falling south of pasture and a golf course. Rectilinear large fields to the west with more irregular and smaller size to the east with low cut hedges, fences and trees. Woodland on minor ridge tops to the south, with isolated trees on boundaries or in golf course- many immature trees in the latter. The area partly acts as a setting to the Shirenewton Hall historic park and garden with views to and from the hilltop settlement. The area's north eastern boundary forms a local ridge and the settlement including Shirenewton Hall forms the skyline to the north. Historic park and garden and essential setting-Shirenewton House; partly covered by Conservation Area with listed buildings adjacent. The area lies within an SLA.

Landscape sensitivity high

The area has high sensitivity as it includes the Shirenewton Hall historic parkland and garden and its setting, is overlooked by the historic edge of the settlement including the village Conservation Area and is generally open.

Housing capacity low

The area has low capacity for housing as it includes an historic parkland and garden, its setting and any housing development would have an adverse effect on the area's character and openness.

Combined Character Area

CCA Number CCA19

LANDMAP Context

Aspect area value

Geological landscapes	100% moderate
Landscape habitats	5% high, 95% moderate
Historical landscapes	100% high
Cultural landscapes	10% outstanding, 90% high
Visual and sensory	100% high

Visual and sensory sensitivity

Designations

Landscape designations in SLA
comments

National Park AONB SLA YES

Historic/archaeology designations comments Historic park and garden and essential setting-Shirenewton House; partly covered by Conservation Area with listed buildings adjacent

Landscape of Hist. Interest **Historic Parks and Gardens** YES **WHS** YES

Hist.Parks and Gardens essential setting YES

SAM **Conservation Area** YES **Listed Building** YES

Biodiversity designations -
comments

SAC **NNR** **SINC** **SSSI** **RAMSAR**

Other

Country Park

National Trail

National Cycle Route

Floodplain (100yr)

Characteristics

Landform ridge valley slopes generally falling south

Landcover pasture, arable and golf course

Function of Area

Pastoral **Arable** **Horticulture** **Recreation** **Other**

Comments pasture, arable and golf course

Pattern

Settlement pattern golf buildings and isolated rural dwellings

Woodland cover woodland on minor ridge tops to the south, with isolated trees on boundaries or in golf course- many immature trees in the latter

Boundaries rectilinear large fields to the west with more irregular and smaller size to the east with low cut hedges, fences and trees

Presence of water **Comments** watercourse in Golden Valley

Scale medium-large

Sense of enclosure moderately open

Diversity simple

Skyline

Prominence/ importance apparent

Complexity simple

Comments the area's north eastern boundary forms a local ridge and the settlement including Shirenewton Hall forms the skyline to the north

Key views

To settlement views to Shirenewton Hall and historic settlement on the hill from the south

From settlement views from Shirenewton Hall and historic settlement on the hill to the south including the Severn Estuary

Landmarks Shirenewton Hall to the north

Detractors -

Intervisibility

Site observation medium

...to key features **...from key place**

Comments the key views within the area are local between the hill top and the lower ground to the south with intervening woodland and landform reducing further views

Tranquillity

Noise sources roads

people

Views of development one side 180

Presence of people frequent

Summary medium

Comments the area's tranquillity is modified by the golf course, road to the east and views of the settlement

Functional relationship of area...

...with settlement some

...with wider landscape some

...with adjacent assessed area? some

Corridor?

Comments area appears to be managed as part of wider land holdings including golf course with public footpaths linking into Shirenewton

Visual relationship of area...

...with settlement significant **...with wider landscape** some

...with adjacent assessed area? some **Setting?**

Comments the area partly acts as a setting to the Shirenewton Hall historic park and garden with views to and from the hilltop settlement

Are adjacent assessed areas mutually reliant...

... visually? **...functionally?**

Comments -

Settlement edge

Pre C20 edge **C20-21 edge**

Nature of edge positive **Form of edge** highly indented

Comments the settlement is unspoilt on the south side with Shirenewton Hall and other listed buildings and mature trees and large gardens and grounds which give a varied and attractive edge. Houses to the west are less positive but are set back on the hill to an extent

Receptors

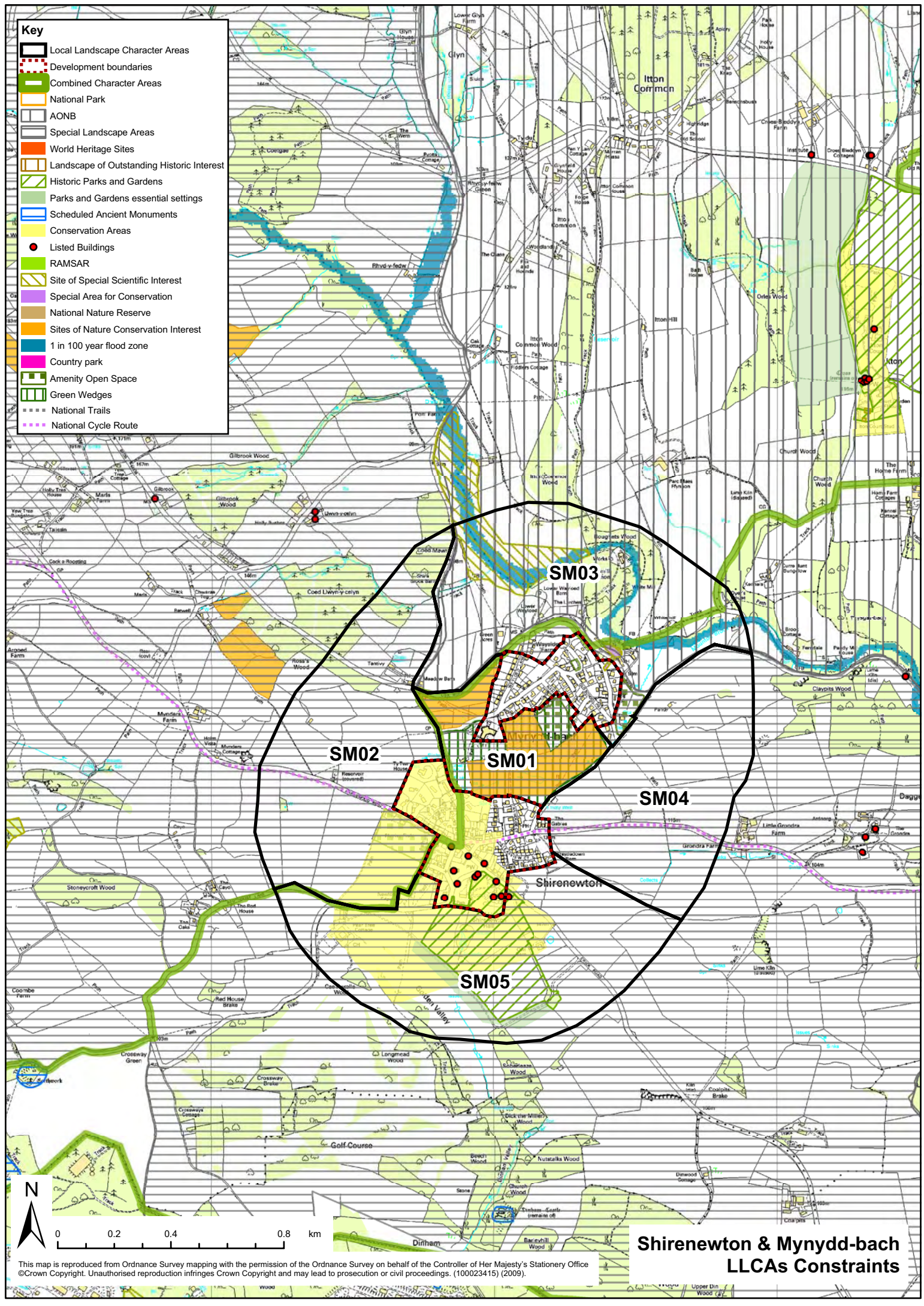
Receptors	Sensitivity
urban residents	high/medium
long distance/public footpaths	high/medium
roads/rail/cycleways	medium
rural residents	high

Comments the main receptors are overlooking residents especially from listed buildings, users of the footpaths into the settlement, road users and limited rural residents

Other

Other factors -

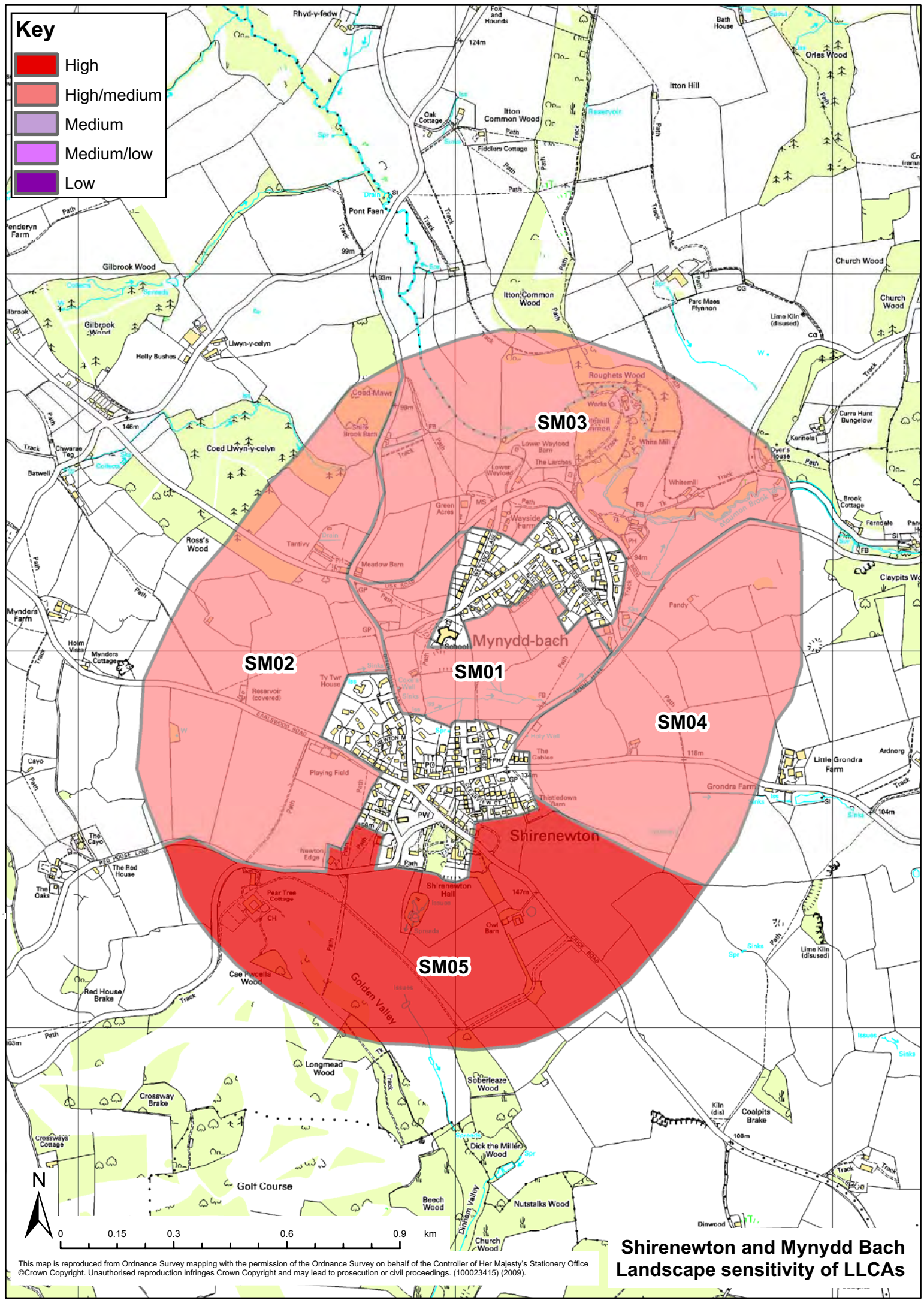
Potential Improvements -



- Key**
- Local Landscape Character Areas
 - Development boundaries
 - Combined Character Areas
 - National Park
 - AONB
 - Special Landscape Areas
 - World Heritage Sites
 - Landscape of Outstanding Historic Interest
 - Historic Parks and Gardens
 - Parks and Gardens essential settings
 - Scheduled Ancient Monuments
 - Conservation Areas
 - Listed Buildings
 - RAMSAR
 - Site of Special Scientific Interest
 - Special Area for Conservation
 - National Nature Reserve
 - Sites of Nature Conservation Interest
 - 1 in 100 year flood zone
 - Country park
 - Amenity Open Space
 - Green Wedges
 - National Trails
 - National Cycle Route

**Shirenewton & Mynydd-bach
LLCAs Constraints**

This map is reproduced from Ordnance Survey mapping with the permission of the Ordnance Survey on behalf of the Controller of Her Majesty's Stationery Office ©Crown Copyright. Unauthorised reproduction infringes Crown Copyright and may lead to prosecution or civil proceedings. (100023415) (2009).

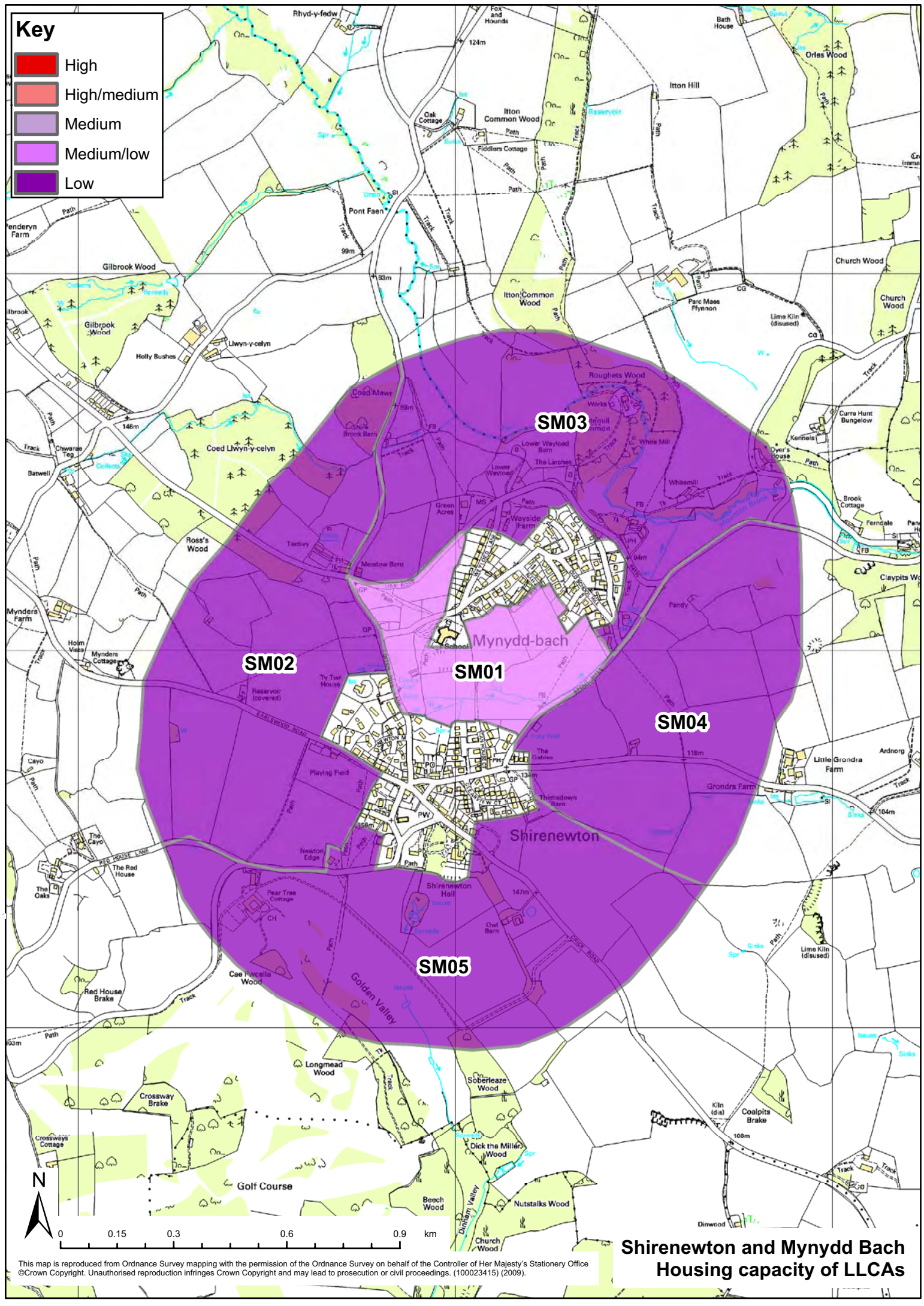


**Shirenewton and Mynydd Bach
Landscape sensitivity of LLCAs**

This map is reproduced from Ordnance Survey mapping with the permission of the Ordnance Survey on behalf of the Controller of Her Majesty's Stationery Office ©Crown Copyright. Unauthorised reproduction infringes Crown Copyright and may lead to prosecution or civil proceedings. (100023415) (2009).

Key

- High
- High/medium
- Medium
- Medium/low
- Low



**Shirenewton and Mynydd Bach
Housing capacity of LLCAs**

This map is reproduced from Ordnance Survey mapping with the permission of the Ordnance Survey on behalf of the Controller of Her Majesty's Stationery Office ©Crown Copyright. Unauthorised reproduction infringes Crown Copyright and may lead to prosecution or civil proceedings. (100023415) (2009).

Summary

Key characteristics Landform gently sloping to the west and south.
 Mainly pastoral land use with some arable land and stables at Oakgrove.
 Mix of irregular and regular field boundaries of small to medium size with a mix of outgrown and low cut hedgerows.
 Moderately enclosed by landform to the north and by vegetation to the south east.
 The area is overlooked by the settlement and acts as an informal setting to part of the Conservation Area.
 Area is in the Wye Valley AONB and is adjacent to Conservation Area with listed buildings.

Landscape sensitivity high/medium

The area has high/medium sensitivity as it is open countryside within the AONB, provides the setting for the Conservation Area and allows attractive views to and from the countryside to the north and west.

Housing capacity medium/low

The area has medium/low capacity for housing as it is open countryside adjacent to the Conservation Area with a well defined edge to the settlement especially to the west. Any development would break through this edge and potentially act as precedent for further development which would be undesirable. Any extension south adjacent to the A466 would not be desirable if access is off the A466 as this would disrupt the positive/neutral approach to the village Conservation Area.

Combined Character Area

CCA Number CCA19

LANDMAP Context

Aspect area value

Geological landscapes	100% high
Landscape habitats	100% moderate
Historical landscapes	100% outstanding
Cultural landscapes	90% outstanding, 10% high
Visual and sensory	100% high

Visual and sensory sensitivity

Designations

Landscape designations comments in Wye Valley AONB; amenity open space- play ground

National Park AONB YES SLA

Historic/archaeology designations comments adjacent to Conservation Area with listed buildings

Landscape of Hist. Interest Historic Parks and Gardens WHS YES

Hist.Parks and Gardens essential setting

SAM Conservation Area YES Listed Building

Biodiversity designations comments -

SAC NNR SINC SSSI RAMSAR

Other

Country Park National Trail National Cycle Route

Floodplain (100yr)

Characteristics

Landform landform gently sloping to the west and south

Landcover pastoral with some arable

Function of Area

Pastoral **Arable** **Horticulture** **Recreation** **Other**

Comments pastoral with some arable and stables

Pattern

Settlement pattern Oakgrove stables

Woodland cover trees associated with field boundaries and around Oakgrove

Boundaries mix of irregular and regular field boundaries of small to medium size with a mix of outgrown and low cut hedgerows

Presence of water **Comments** -

Scale medium

Sense of enclosure moderately enclosed by landform to the north and by vegetation to the south east

Diversity diverse

Skyline

Prominence/ importance not applicable

Complexity

Comments -

Key views

To settlement -

From settlement views out from Conservation Area in parts

Landmarks -

Detractors settlement edge is a minor detractor [Grange Park area]

Intervisibility

Site observation medium

...to key features **...from key place**

Comments from house in Conservation Area

Tranquillity

Noise sources roads

Views of development one side 180

Presence of people

Summary medium

Comments the area is essentially tranquil and rural but is next to the A466 which can be busy and is bounded by the settlement

Functional relationship of area...

...with settlement some

...with wider landscape some

...with adjacent assessed area? some

Corridor?

Comments area managed as part of wider land holdings possibly related to Wyndcliffe Estate with a public footpath linking the settlement with the wider landscape

Visual relationship of area...

...with settlement some

...with wider landscape some

...with adjacent assessed area? some

Setting?

Comments the area is overlooked by the settlement and acts as an informal setting to part of the Conservation Area

Are adjacent assessed areas mutually reliant...

... visually? ...functionally?

Comments -

Settlement edge

Pre C20 edge C20-21 edge

Nature of edge neutral **Form of edge** smooth/linear

Comments the settlement edge is slightly unsightly and not sufficiently mitigated where estates bound the area but at least is contained by two hedges to the north. The edge is more positive where the Conservation Area is located.

Receptors

Receptors

Sensitivity

urban residents high/medium

long distance/public footpaths high/medium

roads/rail/cycleways medium

rural residents high

Comments the main receptors in this area are local residents, walkers using footpaths and users of the A466

Other

Other factors -

Potential Improvements -

Summary

Key characteristics Landform sloping to the west and south across Piercefield Park and sloping very steeply to the Wye to the east. Chepstow race course, playing field, arable and pasture with predominantly rectilinear fenced boundaries. Strong deciduous woodland to east [pSAC and SSSI] and scattered trees to the north and parkland trees. The area provides a generally simple, open rising backcloth to the settlement. Mature trees of woodland on skyline defines edge of view north east out of settlement. In Wye Valley AONB and in registered historic park- Piercefield Park. Listed structure- The Temple Doors; on the edge of Lower Wye Valley Landscape of Outstanding Historic Interest.

Landscape sensitivity high

The area has high sensitivity as it lies within an historic park and garden- Piercefield Park, is open on rising ground abutting the Conservation Area and also is in the AONB close to the steep Wye Valley wooded slopes.

Housing capacity low

The area has a low capacity for housing and it is within an historic park, is open and rising in character and relates to the Conservation Area within the AONB.

Combined Character Area

CCA Number CCA23 with some CCA19

LANDMAP Context

Aspect area value

Geological landscapes	10% outstanding, 90% high
Landscape habitats	15% outstanding, 85% moderate
Historical landscapes	100% outstanding
Cultural landscapes	93% outstanding, 7% high
Visual and sensory	70% outstanding, 30% high

Visual and sensory sensitivity

Designations

Landscape designations comments in Wye Valley AONB

National Park AONB YES SLA

Historic/archaeology designations comments in registered historic park- Piercefield Park; listed structure- The Temple Doors; on the edge of Lower Wye Valley Landscape of Outstanding Historic Interest; abuts Conservation Area

Landscape of Hist. Interest YES **Historic Parks and Gardens** YES **WHS** YES

Hist.Parks and Gardens essential setting

SAM **Conservation Area** YES **Listed Building** YES

Biodiversity designations comments Wyncliffe Wood Meadow SINC; on edge of Wye Valley woodlands pSAC and SSSI

SAC YES NNR SINC YES SSSI YES RAMSAR

Other

Country Park National Trail National Cycle Route

Floodplain (100yr)

Characteristics

Landform landform sloping to the west and south across Piercefield Park and sloping very steeply to the Wye to the east

Landcover mix of race course turf, arable and pasture with woodland to the east

Function of Area

Pastoral Arable Horticulture Recreation Other

Comments Chepstow race course, playing field, arable and pasture

Pattern

Settlement pattern none- agricultural buildings or commercial building on edge of settlement

Woodland cover strong deciduous woodland to east and scattered trees to the north and parkland trees

Boundaries predominantly rectilinear fenced boundaries

Presence of water **Comments** -

Scale medium-large

Sense of enclosure open to south

Diversity diverse

Skyline

Prominence/ importance apparent **Complexity** simple

Comments mature trees of woodland on skyline defines edge of view north east out of settlement

Key views

To settlement view from footpath on edge of woodland

From settlement view out to racecourse and trees on skyline

Landmarks -

Detractors small container storage area close to A466

Intervisibility

Site observation medium ...to key features ...from key place

Comments slopes are intervisible with rest of racecourse and with settlement

Tranquillity

Noise sources roads

Views of development one side 180 **Presence of people** frequent

Summary medium

Comments the area is essentially tranquil but is next to the A466 which can be busy and is bounded by the settlement and the racecourse

Functional relationship of area...

...with settlement some ...with wider landscape some

...with adjacent assessed area? limited Corridor?

Comments the area is partly associated with settlement as a playing field but the majority is related to the racecourse and Piercefield Park.

Visual relationship of area...

...with settlement some **...with wider landscape** some

...with adjacent assessed area? some **Setting?**

Comments the area provides a generally simple, open rising backcloth to the settlement

Are adjacent assessed areas mutually reliant...

... visually? **...functionally?**

Comments -

Settlement edge

Pre C20 edge **C20-21 edge**

Nature of edge neutral **Form of edge** moderately indented

Comments mixed incremental edge which minimises intrusion into Piercefield Park

Receptors

Receptors	Sensitivity
urban residents	high/medium
long distance/public footpaths	high/medium
roads/rail/cycleways	medium

Comments the main receptors in this area are local residents, walkers using footpaths and users of the A466

Other

Other factors -

Potential Improvements -

Summary

Key characteristics Land rising to the north of the settlement towards Gaer Hill, steeply in parts.
Mainly irregular medium-sized fields with low cut hedges.
Mixed woodland around Wyndcliffe Court and in stream valleys with occasional trees on field boundaries.
The area acts as a strong unspoilt landscape backcloth to the settlement and acts as an informal setting to listed Wyndcliffe Court with views to the south.
The area is essentially tranquil and rural but is next to the A466 which can be busy and overlooks the settlement.
The settlement adjacent is partly Conservation Area and the area lies within the Wye Valley AONB.

Landscape sensitivity high/medium

The area has high/medium sensitivity as it comprises rising land north of the settlement within the AONB, some steep, which acts as an unspoilt backcloth to the settlement and also as a setting to listed Wyndcliffe Court. The area to the east is visible from the A466 which is a main access into the AONB.

Housing capacity medium/low

The area has medium/low capacity for housing as it provides the unspoilt sloping backcloth to the village and the setting for Wyndcliffe Court within the AONB.

Combined Character Area

CCA Number CCA20

LANDMAP Context

Aspect area value

Geological landscapes	20% high, 80% moderate
Landscape habitats	100% moderate
Historical landscapes	100% outstanding
Cultural landscapes	93% outstanding, 7% high
Visual and sensory	100% high

Visual and sensory sensitivity

Designations

Landscape designations comments in Wye Valley AONB

National Park AONB YES SLA

Historic/archaeology designations comments Wyndcliffe Court listed buildings; Conservation Area adjacent

Landscape of Hist. Interest Historic Parks and Gardens YES WHS YES

Hist.Parks and Gardens essential setting

SAM Conservation Area YES Listed Building YES

Biodiversity designations comments -

SAC NNR SINC YES SSSI RAMSAR

Other

Country Park National Trail National Cycle Route

Floodplain (100yr)

Characteristics

Landform land rising to the north of the settlement towards Gaer Hill, steeply in parts

Landcover mainly pastoral with arable to west

Function of Area

Pastoral **Arable** **Horticulture** **Recreation** **Other**

Comments mainly pastoral with arable to west

Pattern

Settlement pattern Wyndcliffe Court and rural dwellings including linear rural settlement on Devauden Road

Woodland cover mixed woodland around Wyndcliffe Court and in stream valleys

Boundaries mainly irregular medium-sized fields with low cut hedges

Presence of water **Comments** small water courses

Scale medium

Sense of enclosure moderately open due to sloping landform

Diversity simple

Skyline

Prominence/ importance prominent **Complexity** simple

Comments provides local backcloth and skyline to village to the north

Key views

To settlement from Wyndcliffe Court views across settlement and from A466 towards settlement

From settlement -

Landmarks Wyndcliffe Court

Detractors -

Intervisibility

Site observation high **...to key features** **...from key place**

Comments the rising slopes have strong intervisibility with the landscape to the south

Tranquillity

Noise sources roads

Views of development one side 180 **Presence of people** frequent

Summary medium

Comments the area is essentially tranquil and rural but is next to the A466 which can be busy and overlooks the settlement

Functional relationship of area...

...with settlement some **...with wider landscape** some

...with adjacent assessed area? some **Corridor?**

Comments area managed as part of wider land holdings possibly related to Wyndcliffe Estate

Visual relationship of area...

...with settlement some **...with wider landscape** some

...with adjacent assessed area? some

Setting?

Comments the area acts as a strong unspoilt landscape backcloth to the settlement and acts as an informal setting to Wyndcliffe Court

Are adjacent assessed areas mutually reliant...

... visually? ...functionally?

Comments -

Settlement edge

Pre C20 edge C20-21 edge

Nature of edge neutral **Form of edge** moderately indented

Comments the settlement is a combination of linear development up the hill and to the east with estate development to the west sitting into the hill

Receptors

Receptors

Sensitivity

urban residents high/medium

rural residents high/medium

roads/rail/cycleways medium

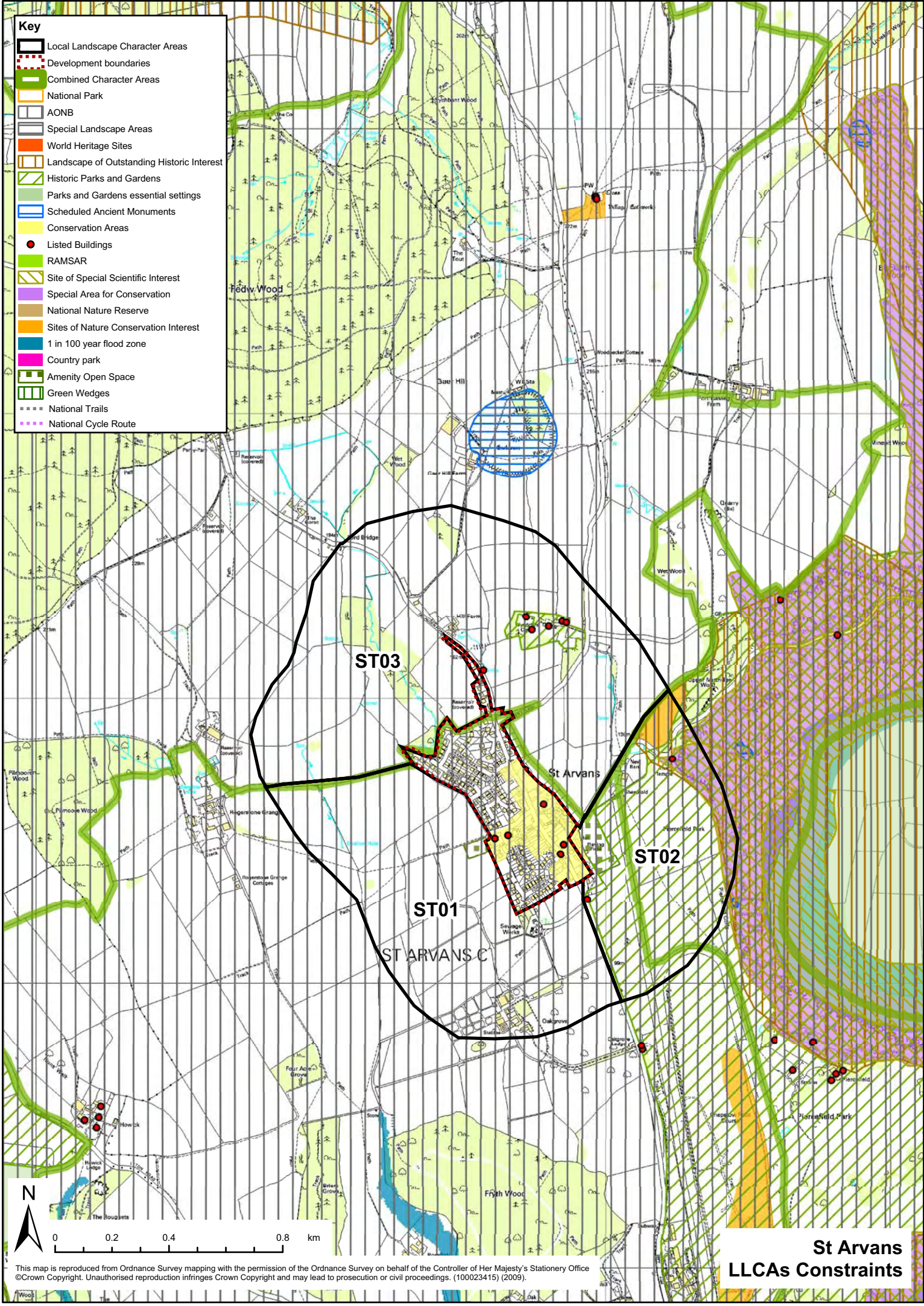
long distance/public footpaths high

Comments the main receptors in this area are local residents, walkers using footpaths and users of the A466 and the minor road

Other

Other factors the A466 passes through the village and has a positive view of it as it passes through the Conservation Area with limited views of the housing estates

Potential Improvements -



- Key**
- Local Landscape Character Areas
 - Development boundaries
 - Combined Character Areas
 - National Park
 - AONB
 - Special Landscape Areas
 - World Heritage Sites
 - Landscape of Outstanding Historic Interest
 - Historic Parks and Gardens
 - Parks and Gardens essential settings
 - Scheduled Ancient Monuments
 - Conservation Areas
 - Listed Buildings
 - RAMSAR
 - Site of Special Scientific Interest
 - Special Area for Conservation
 - National Nature Reserve
 - Sites of Nature Conservation Interest
 - 1 in 100 year flood zone
 - Country park
 - Amenity Open Space
 - Green Wedges
 - National Trails
 - National Cycle Route

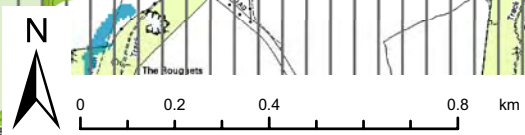
ST03

St Arvans

ST02

ST01

ST ARVANS C

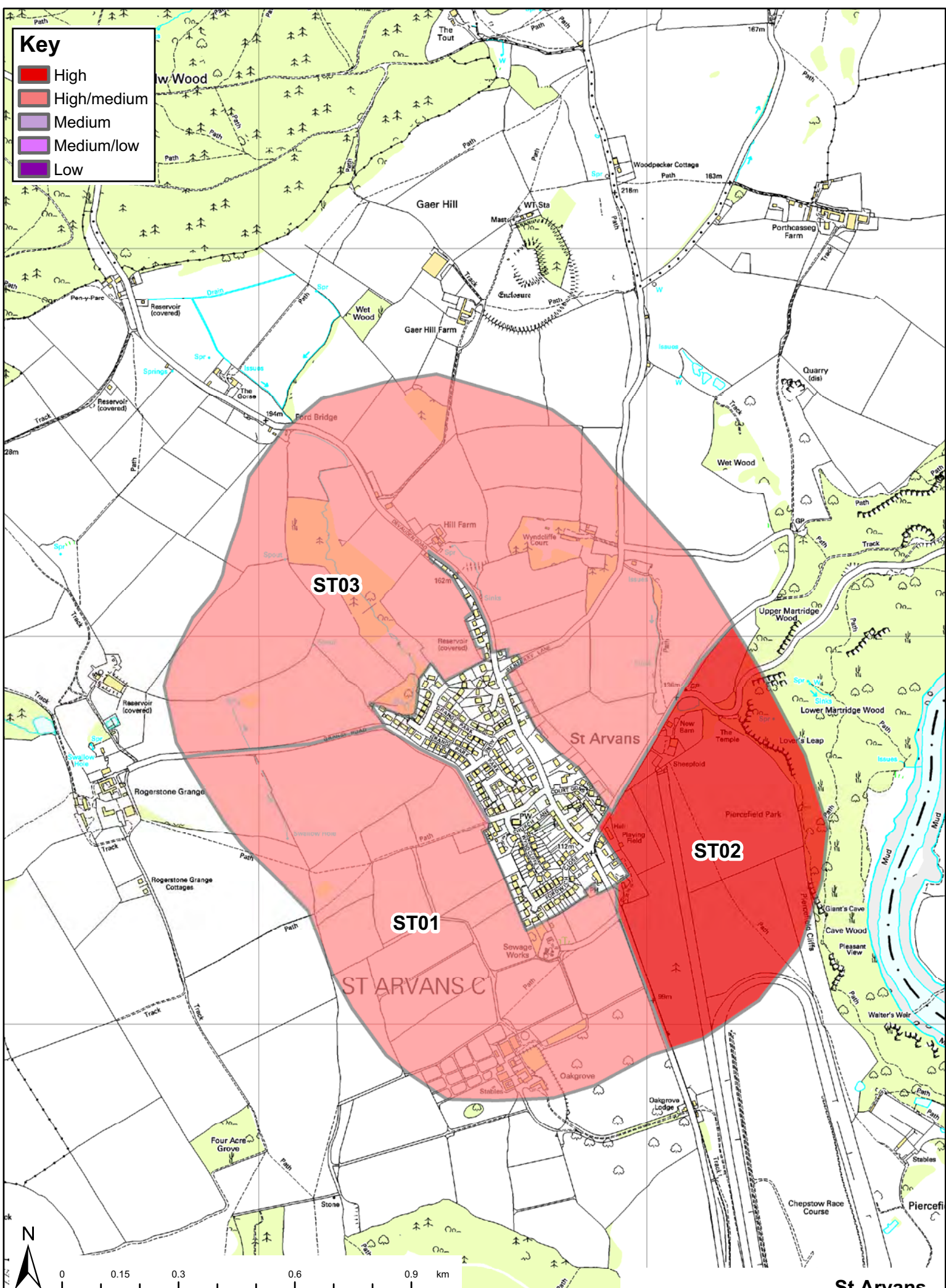


**St Arvans
LLCAs Constraints**

This map is reproduced from Ordnance Survey mapping with the permission of the Ordnance Survey on behalf of the Controller of Her Majesty's Stationery Office ©Crown Copyright. Unauthorised reproduction infringes Crown Copyright and may lead to prosecution or civil proceedings. (100023415) (2009).

Key

- High
- High/medium
- Medium
- Medium/low
- Low



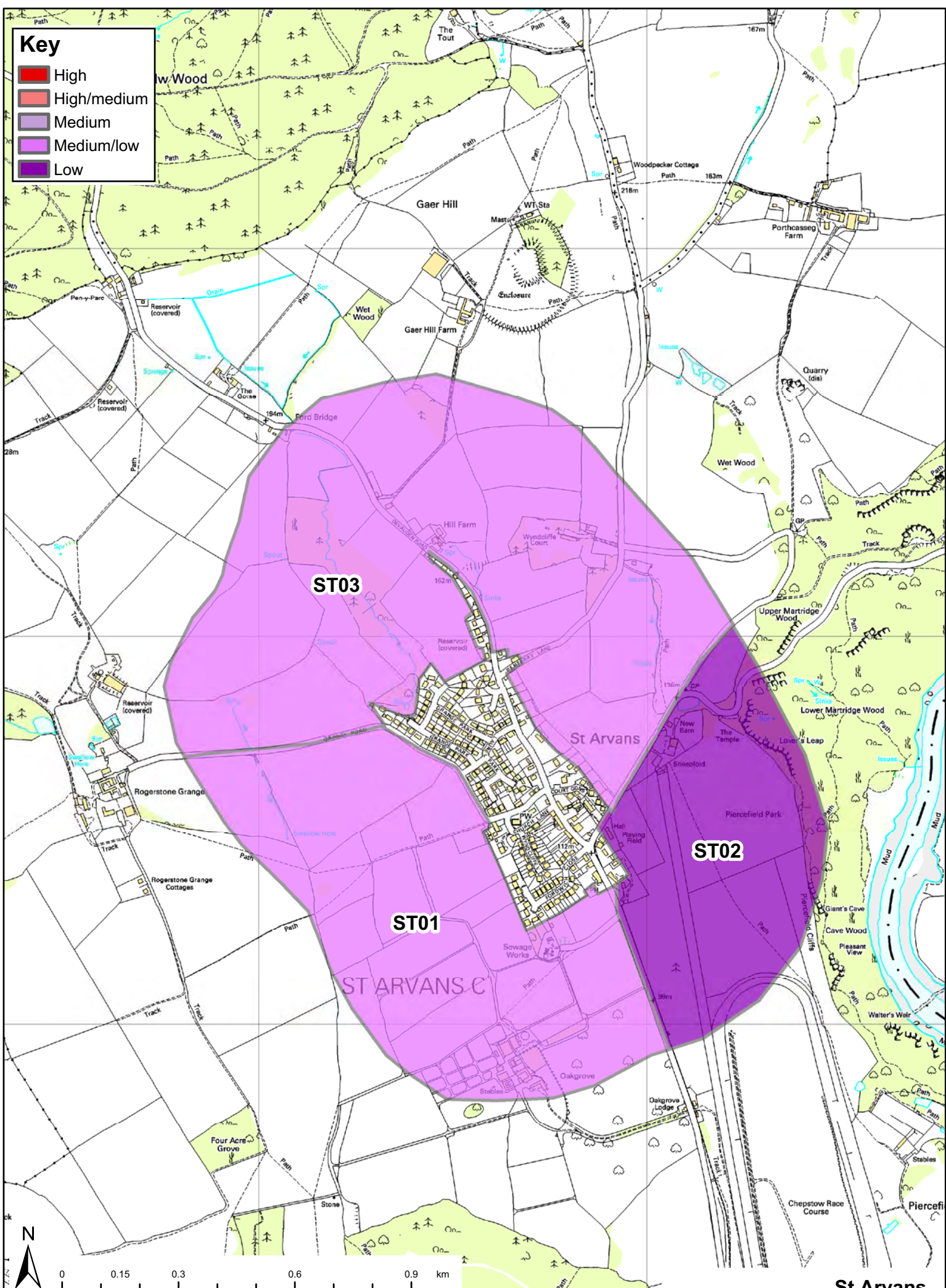
St Arvens

Landscape sensitivity of LLCAs

This map is reproduced from Ordnance Survey mapping with the permission of the Ordnance Survey on behalf of the Controller of Her Majesty's Stationery Office © Crown Copyright. Unauthorised reproduction infringes Crown Copyright and may lead to prosecution or civil proceedings. (100023415) (2009).

Key

- High
- High/medium
- Medium
- Medium/low
- Low



0 0.15 0.3 0.6 0.9 km

This map is reproduced from Ordnance Survey mapping with the permission of the Ordnance Survey on behalf of the Controller of Her Majesty's Stationary Office ©Crown Copyright. Unauthorised reproduction infringes Crown Copyright and may lead to prosecution or civil proceedings. (100023415) (2009).

**St Arvens
Housing capacity of LLCAs**

Summary

Key characteristics Valley floor and floodplain of the River Usk with drains. Irregular small-medium sized fields with trees or fences. Trees on some field boundaries and associated with wet areas and also along the A40[T]. The area forms part of the Usk valley floor with a strong connection with the river. The area's rural character and the tranquillity of the Usk is countered by traffic on the A40[T] and the powerlines. The River Usk adjacent is pSAC and SSSI.

Landscape sensitivity high/medium

The area has high/medium sensitivity as it forms part of the Usk corridor with floodplain and Usk Valley Walk and has a strong relationship with the river and a riparian character.

Housing capacity medium/low

The area has medium/low capacity for housing as though the majority of the area is associated with the Usk and its sensitive floodplain there is a small strip of land between the settlement and A40[T] which may offer opportunity for housing.

Combined Character Area

CCA Number CCA36

LANDMAP Context

	Aspect area value
Geological landscapes	100% moderate
Landscape habitats	20% outstanding, 80% moderate
Historical landscapes	100% high
Cultural landscapes	100% high
Visual and sensory	20% outstanding, 80% high

Visual and sensory sensitivity

Designations

Landscape designations -
comments

National Park AONB SLA YES

Historic/archaeology designations -
comments

Landscape of Hist. Interest **Historic Parks and Gardens** **WHS** YES

Hist.Parks and Gardens essential setting

SAM **Conservation Area** **Listed Building**

Biodiversity designations River Usk adjacent is pSAC and SSSI
comments

SAC YES **NNR** **SINC** **SSSI** YES **RAMSAR**

Other

Country Park **National Trail** **National Cycle Route**

Floodplain (100yr) YES

Characteristics

Landform valley floor and floodplain of the River Usk

Landcover pasture and arable

Function of Area

Pastoral **Arable** **Horticulture** **Recreation** **Other**

Comments pasture and arable

Pattern

Settlement pattern none

Woodland cover trees on some field boundaries and associated with wet areas and also along the A40[T]

Boundaries irregular small-medium sized fields with trees or fences

Presence of water **Comments** River Usk plus drains

Scale small to medium

Sense of enclosure enclosed generally although opens up to the east

Diversity simple

Skyline

Prominence/ importance not applicable

Complexity

Comments -

Key views

To settlement -

From settlement view across are from settlement edge

Landmarks -

Detractors A40[T] adjacent and powerline

Intervisibility

Site observation medium

...to key features **...from key place**

Comments the area's intrinsic enclosed character to the west is countered by its openness to the east and adjacency to the A40[T] which is only tree lined for part of its length

Tranquillity

Noise sources roads

Views of development one side 180

Presence of people infrequent

Summary medium

Comments the area's rural character and the tranquillity of the Usk is countered by traffic on the A40[T] and the powerlines

Functional relationship of area...

...with settlement some

...with wider landscape some

...with adjacent assessed area? some

Corridor?

Comments area managed as part of wider land holdings and as a corridor for the Usk with its floodplain, and with well used public footpaths including the Usk Valley walk

Visual relationship of area...

...with settlement some

...with wider landscape some

...with adjacent assessed area? some

Setting?

Comments the area forms part of the Usk valley floor with a strong connection with the

river

Are adjacent assessed areas mutually reliant...

... visually? ...functionally?

Comments -

Settlement edge

Pre C20 edge C20-21 edge

Nature of edge neutral Form of edge moderately indented

Comments the settlement edge is an incremental edge with small scale development which is generally well screened from wider view by nearby hedgerows and trees

Receptors

Receptors	Sensitivity
urban residents	high/medium
long distance/public footpaths	high/medium
roads/rail/cycleways	medium

Comments the main receptors are adjacent residents, users of footpaths through the area and users of the A40[T] adjacent

Other

Other factors -

Potential Improvements -

Key characteristics Valley floor and floodplain of the River Usk.
Irregular medium-large fields with low cut hedge or fence boundaries.
Scrubby tree cover on south west boundary of the settlement, along railway embankment and associated with church.
Cluster of church and rectory with nearby farmhouse.
The area forms the setting to the church and other buildings and also is part of the Usk valley floor with a strong connection with the river.
The church of St Cadoc is listed; Llangatock Nigh Usk churchyard cross is a SAM.
The River Usk adjacent is pSAC and SSSI.

Landscape sensitivity high/medium

The area has high/medium sensitivity as it forms the setting to the church and is part of the Usk corridor with floodplain and Usk Valley Walk and has a strong relationship with the river and a riparian character.

Housing capacity low

The area has a low capacity for housing as it forms part of the Usk corridor and floodplain, and housing would have an adverse effect on this and the setting of the church.

Combined Character Area

CCA Number CCA36

LANDMAP Context

	Aspect area value
Geological landscapes	100% moderate
Landscape habitats	15% outstanding, 85% moderate
Historical landscapes	100% high
Cultural landscapes	100% high
Visual and sensory	10% outstanding, 90% high

Visual and sensory sensitivity

Designations

Landscape designations -
comments

National Park AONB SLA YES

Historic/archaeology designations comments Church listed; Llangatock Nigh Usk churchyard cross- SAM

Landscape of Hist. Interest **Historic Parks and Gardens** WHS YES

Hist.Parks and Gardens essential setting

SAM YES **Conservation Area** **Listed Building** YES

Biodiversity designations comments River Usk adjacent is pSAC and SSSI

SAC YES **NNR** **SINC** **SSSI** YES **RAMSAR**

Other

Country Park **National Trail** **National Cycle Route**

Floodplain (100yr) YES

Characteristics

Landform valley floor and floodplain of the River Usk

Landcover pasture

Function of Area

Pastoral **Arable** **Horticulture** **Recreation** **Other**

Comments pasture

Pattern

Settlement pattern cluster of church and rectory with nearby farmhouse- all clearly separate from the main settlement

Woodland cover scrubby tree cover on south west boundary of the settlement, along railway embankment and associated with church

Boundaries irregular medium-large fields with low cut hedge or fence boundaries

Presence of water **Comments** River Usk plus drains

Scale medium

Sense of enclosure moderate

Diversity simple

Skyline

Prominence/ importance apparent **Complexity** simple

Comments railway embankment forms local skyline to south west

Key views

To settlement -

From settlement view to historic cluster of buildings including church from settlement edge

Landmarks church and associated buildings

Detractors A40[T] adjacent

Intervisibility

Site observation medium **...to key features** **...from key place**

Comments the area's intrinsic enclosed character to the west is countered by its adjacency to the A40[T] and railway which are only tree lined for part of their lengths

Tranquillity

Noise sources roads

Views of development one side 180 **Presence of people** infrequent

Summary medium

Comments the area's rural character and the tranquillity of the Usk is countered by traffic on the A40[T] and the railway

Functional relationship of area...

...with settlement some **...with wider landscape** some

...with adjacent assessed area? some **Corridor?**

Comments area managed as part of wider land holdings and as a corridor for the Usk with its floodplain, and with well used public footpaths including the Usk Valley walk

Visual relationship of area...

...with settlement some **...with wider landscape** some

...with adjacent assessed area? some

Setting?

Comments the area forms the setting to the church and other buildings and also is part of the Usk valley floor with a strong connection with the river

Are adjacent assessed areas mutually reliant...

... visually? ...functionally?

Comments -

Settlement edge

Pre C20 edge C20-21 edge

Nature of edge neutral Form of edge moderately indented

Comments the settlement consists of bungalows to the west which maintain a low profile on the low rise above the valley floor while the houses to the south and east are integrated with vegetation although the village hall is a minor detractor

Receptors

Receptors	Sensitivity
rural residents	high
urban residents	high
long distance/public footpaths	high
roads/rail/cycleways	medium

Comments the main receptors are users of the church, adjacent residents, users of footpaths through the area and users of the A40[T] adjacent

Other

Other factors -

Potential Improvements village hall improvements

Summary

Key characteristics Very gently sloping valley floor of the Usk. Irregular and straight field boundaries of low cut hedges and fences around medium- large pasture and arable fields set between two roads. Trees are mixed and are found along field boundaries and associated with settlement and with A40[T]. The area is associated most closely with Penpergwm and Llangattock House and is separated from The Bryn by the A40[T] and associated trees although it is on its approach road. The area feels separated from the Usk valley floor by the A40[T]. It is in the SLA and adjacent to the listed Llangattock Court to north.

Landscape sensitivity medium

The area has medium sensitivity as though of rural character and associated with a loose linear rural settlement and adjacent to a listed building it lies between two roads which reduce its tranquillity.

Housing capacity medium/low

The area has medium/low capacity for housing it is rural in character, lies adjacent to a listed building, contributes to the loose rural character of Penpergwm and provides a green gap between this settlement and The Bryn. Development would adversely affect these qualities.

Combined Character Area

CCA Number CCA36

LANDMAP Context

	Aspect area value
Geological landscapes	100% moderate
Landscape habitats	100% moderate
Historical landscapes	100% high
Cultural landscapes	100% outstanding
Visual and sensory	100% high

Visual and sensory sensitivity

Designations

Landscape designations in SLA
comments

National Park AONB SLA YES

Historic/archaeology designations adjacent Llangattock Court listed to north
comments

Landscape of Hist. Interest **Historic Parks and Gardens** WHS YES

Hist.Parks and Gardens essential setting

SAM **Conservation Area** **Listed Building**

Biodiversity designations -
comments

SAC **NNR** **SINC** **SSSI** **RAMSAR**

Other

Country Park **National Trail** **National Cycle Route**

Floodplain (100yr)

Characteristics

Landform very gently sloping valley floor of the Usk

Landcover pasture and arable

Function of Area

Pastoral **Arable** **Horticulture** **Recreation** **Other**

Comments pasture and arable

Pattern

Settlement pattern Penpergwm House

Woodland cover mixed trees along field boundaries, associated with settlement and with A40[T]

Boundaries irregular and straight field boundaries of low cut hedges and fences around medium- large fields

Presence of water **Comments** small watercourse to east

Scale medium

Sense of enclosure moderately enclosed

Diversity simple

Skyline

Prominence/ importance not applicable

Complexity

Comments -

Key views

To settlement -

From settlement view from listed Llangattock Court across area

Landmarks Llangattock Court to the north

Detractors A40[T] and powerlines

Intervisibility

Site observation medium

...to key features **...from key place**

Comments the area is generally open in character and open to view from the A40[T] in parts or the B4598

Tranquillity

Noise sources roads

Views of development some

Presence of people frequent

Summary medium

Comments the area's rural character is countered by traffic on the A40[T] on one side and traffic on the B4598 on the other with the powerlines

Functional relationship of area...

...with settlement some

...with wider landscape some

...with adjacent assessed area? some

Corridor?

Comments area apparently managed as part of wider land holdings and with public footpaths but these cross the A40[T] at one point which acts as a barrier

Visual relationship of area...

...with settlement limited

...with wider landscape some

...with adjacent assessed area? some

Setting?

Comments the area is associated most closely with Penpergwm and Llangattock House and is separated from The Bryn by the A40[T] and associated trees although it is on its approach road. The area also feels separated from the Usk valley floor by the road.

Are adjacent assessed areas mutually reliant...

... visually? ...functionally?

Comments -

Settlement edge

Pre C20 edge C20-21 edge

Nature of edge positive Form of edge moderately indented

Comments the area is associated with Penpergwm, not The Bryn, with its traditional linear dispersed form

Receptors

Receptors	Sensitivity
rural residents	high
long distance/public footpaths	high
roads/rail/cycleways	medium

Comments the main receptors are adjacent residents in Penpergwm, users of footpaths through the area and users of the A40[T] and B4598 adjacent

Other

Other factors -

Potential Improvements plant hedge and trees along B4598

Summary

Key characteristics Usk valley slopes rising north in SLA.
 Irregular medium-sized fields with low cut hedges.
 Strong mixed woodland cover of Brickyard Wood and occasional mature trees on boundaries.
 The area forms the local horizon when viewed from the B4598 and associated settlement.
 The area is significantly separated and screened from The Bryn and is part of the rising backcloth to the adjacent listed Llangattock House.

Landscape sensitivity high/medium

The area has high/medium sensitivity as it consists of rising slopes with pasture and mixed woodland which form a positive backcloth to the Usk valley and the settlement of Penpergwm with the listed Llangattock House.

Housing capacity low

The area has low capacity for housing as forms the rural rising backcloth to the dispersed linear settlement of Penpergwm, listed Llangattock House and is significantly separated from The Bryn.

Combined Character Area

CCA Number CCA53 with some CCA39

LANDMAP Context

	Aspect area value
Geological landscapes	40% high, 60% moderate
Landscape habitats	100% moderate
Historical landscapes	5% high, 95% moderate
Cultural landscapes	100% outstanding
Visual and sensory	100% high

Visual and sensory sensitivity

Designations

Landscape designations comments in SLA

National Park AONB SLA YES

Historic/archaeology designations comments adjacent Llangattock Court listed to east

Landscape of Hist. Interest Historic Parks and Gardens WHS YES

Hist.Parks and Gardens essential setting

SAM Conservation Area Listed Building

Biodiversity designations comments -

SAC NNR SINC SSSI RAMSAR

Other

Country Park National Trail National Cycle Route

Floodplain (100yr)

Characteristics

Landform Usk valley slopes rising north

Landcover pasture, arable and woodland

Function of Area

Pastoral **Arable** **Horticulture** **Recreation** **Other**

Comments pasture and arable

Pattern

Settlement pattern isolated rural dwelling- Fernlea

Woodland cover strong mixed woodland cover of Brickyard Wood and occasional mature trees on boundaries

Boundaries irregular medium-sized fields with low cut hedges

Presence of water **Comments** -

Scale medium

Sense of enclosure moderately open

Diversity simple

Skyline

Prominence/ importance prominent **Complexity** simple

Comments the area forms the local horizon when viewed from the B4598 and associated settlement

Key views

To settlement views to Llangattock House across area but not The Bryn

From settlement views from Penpergwm [but not the Bryn] to the area which forms a positive unspoilt backcloth

Landmarks -

Detractors -

Intervisibility

Site observation high **...to key features** **...from key place**

Comments the rising slopes are intervisible with the Usk valley floor and from the nearby roads

Tranquillity

Noise sources roads

Views of development some

Presence of people infrequent

Summary medium

Comments the area's rural character is countered by traffic on the A40[T] and the B4598

Functional relationship of area...

...with settlement limited **...with wider landscape** some

...with adjacent assessed area? some **Corridor?**

Comments area apparently managed as part of wider land holdings and with a public footpath but significantly separated from The Bryn

Visual relationship of area...

...with settlement limited **...with wider landscape** some

...with adjacent assessed area? some **Setting?**

Comments the area is significantly separated and screened from The Bryn and is part of the rising backcloth to the adjacent Llangattock House

Are adjacent assessed areas mutually reliant...

... visually? ...functionally?

Comments -

Settlement edge

Pre C20 edge C20-21 edge

Nature of edge positive Form of edge highly indented

Comments the area is associated with Penpergwm, not The Bryn, with its traditional linear dispersed form

Receptors

Receptors	Sensitivity
rural residents	high
roads/rail/cycleways	high
long distance/public footpaths	high

Comments the main receptors are adjacent residents in Penpergwm, users of footpaths through the area and users of the B4598 adjacent

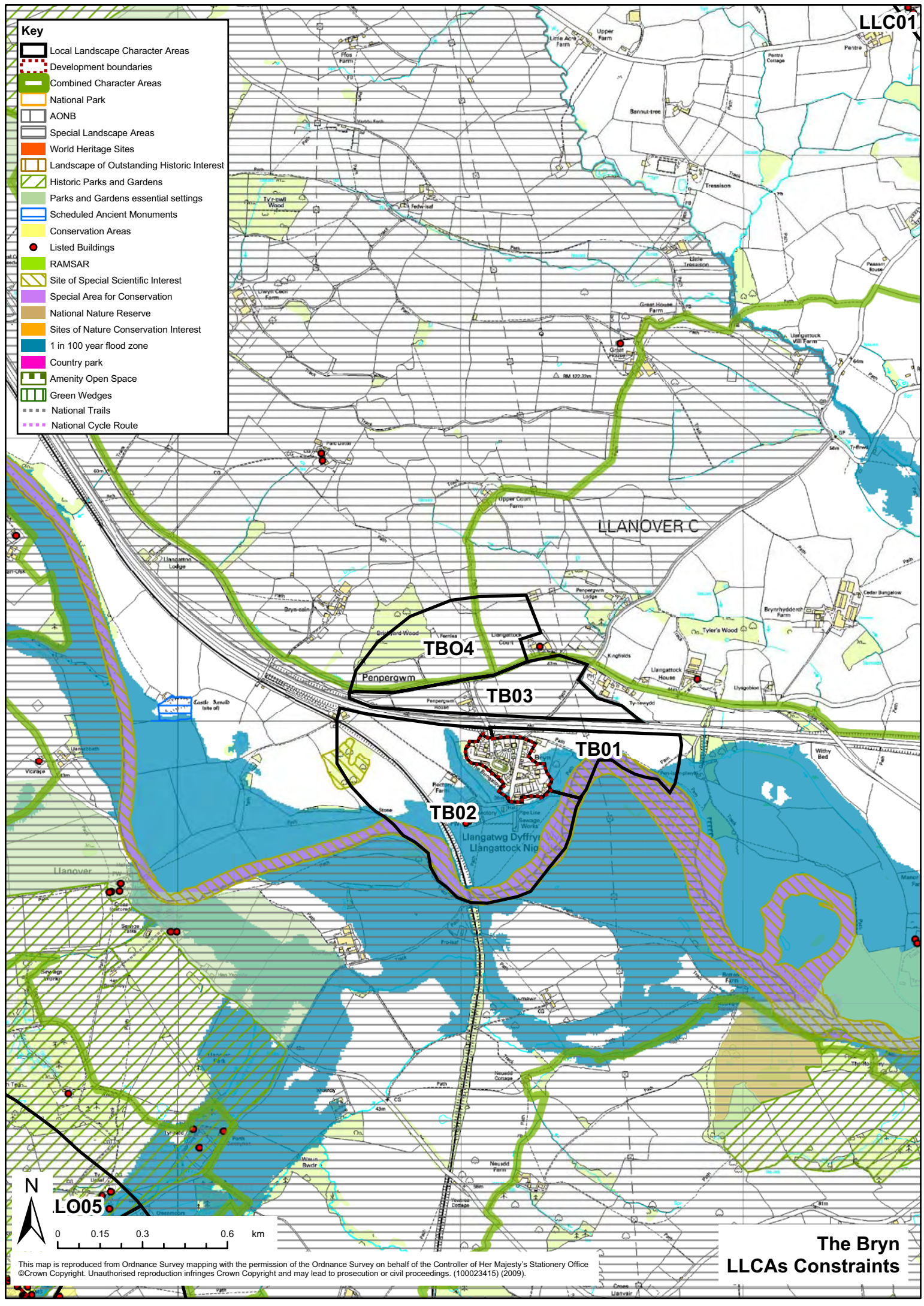
Other

Other factors -

Potential Improvements -

Key

- Local Landscape Character Areas
- Development boundaries
- Combined Character Areas
- National Park
- AONB
- Special Landscape Areas
- World Heritage Sites
- Landscape of Outstanding Historic Interest
- Historic Parks and Gardens
- Parks and Gardens essential settings
- Scheduled Ancient Monuments
- Conservation Areas
- Listed Buildings
- RAMSAR
- Site of Special Scientific Interest
- Special Area for Conservation
- National Nature Reserve
- Sites of Nature Conservation Interest
- 1 in 100 year flood zone
- Country park
- Amenity Open Space
- Green Wedges
- National Trails
- National Cycle Route



LLANOVER C

TBO4

TBO3

TBO1

TBO2

Llangatwg Dyffry
Llangatlock Nig



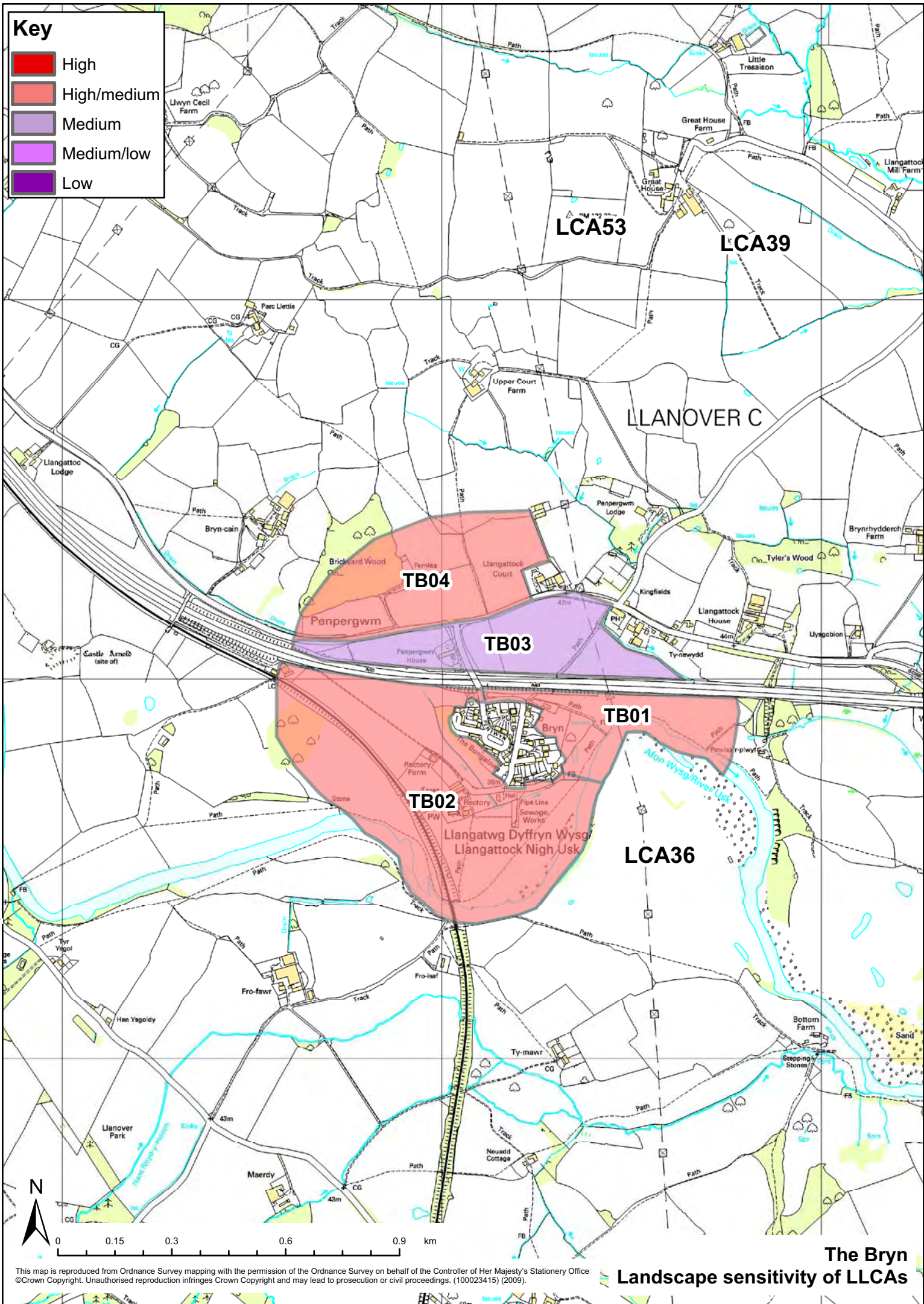
LO05

0 0.15 0.3 0.6 km

This map is reproduced from Ordnance Survey mapping with the permission of the Ordnance Survey on behalf of the Controller of Her Majesty's Stationery Office ©Crown Copyright. Unauthorised reproduction infringes Crown Copyright and may lead to prosecution or civil proceedings. (100023415) (2009).

Key

- High
- High/medium
- Medium
- Medium/low
- Low

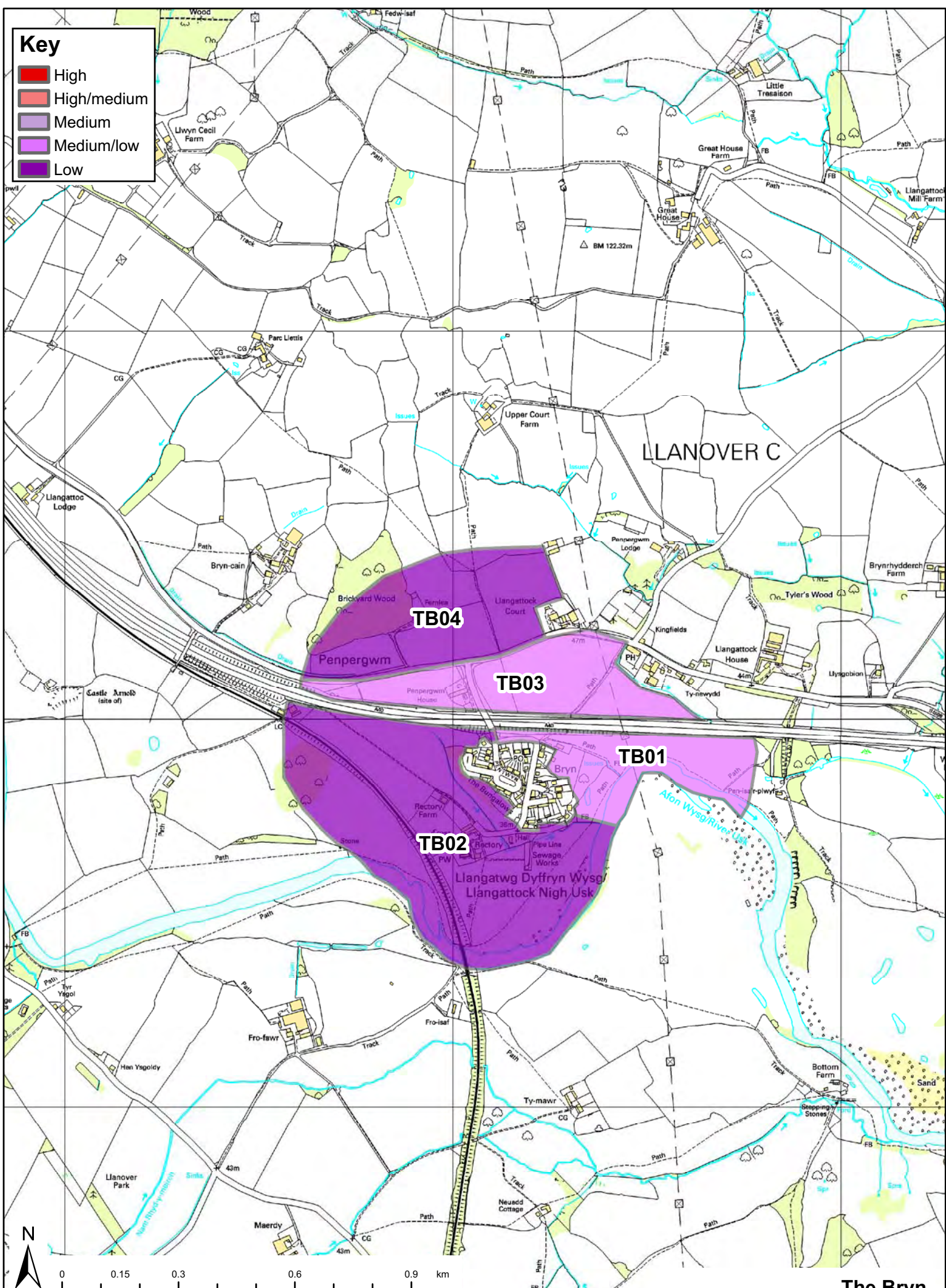


The Bryn
Landscape sensitivity of LLCA's

This map is reproduced from Ordnance Survey mapping with the permission of the Ordnance Survey on behalf of the Controller of Her Majesty's Stationery Office ©Crown Copyright. Unauthorised reproduction infringes Crown Copyright and may lead to prosecution or civil proceedings. (100023415) (2009).

Key

- High
- High/medium
- Medium
- Medium/low
- Low



This map is reproduced from Ordnance Survey mapping with the permission of the Ordnance Survey on behalf of the Controller of Her Majesty's Stationary Office © Crown Copyright. Unauthorised reproduction infringes Crown Copyright and may lead to prosecution or civil proceedings. (100023415) (2009).