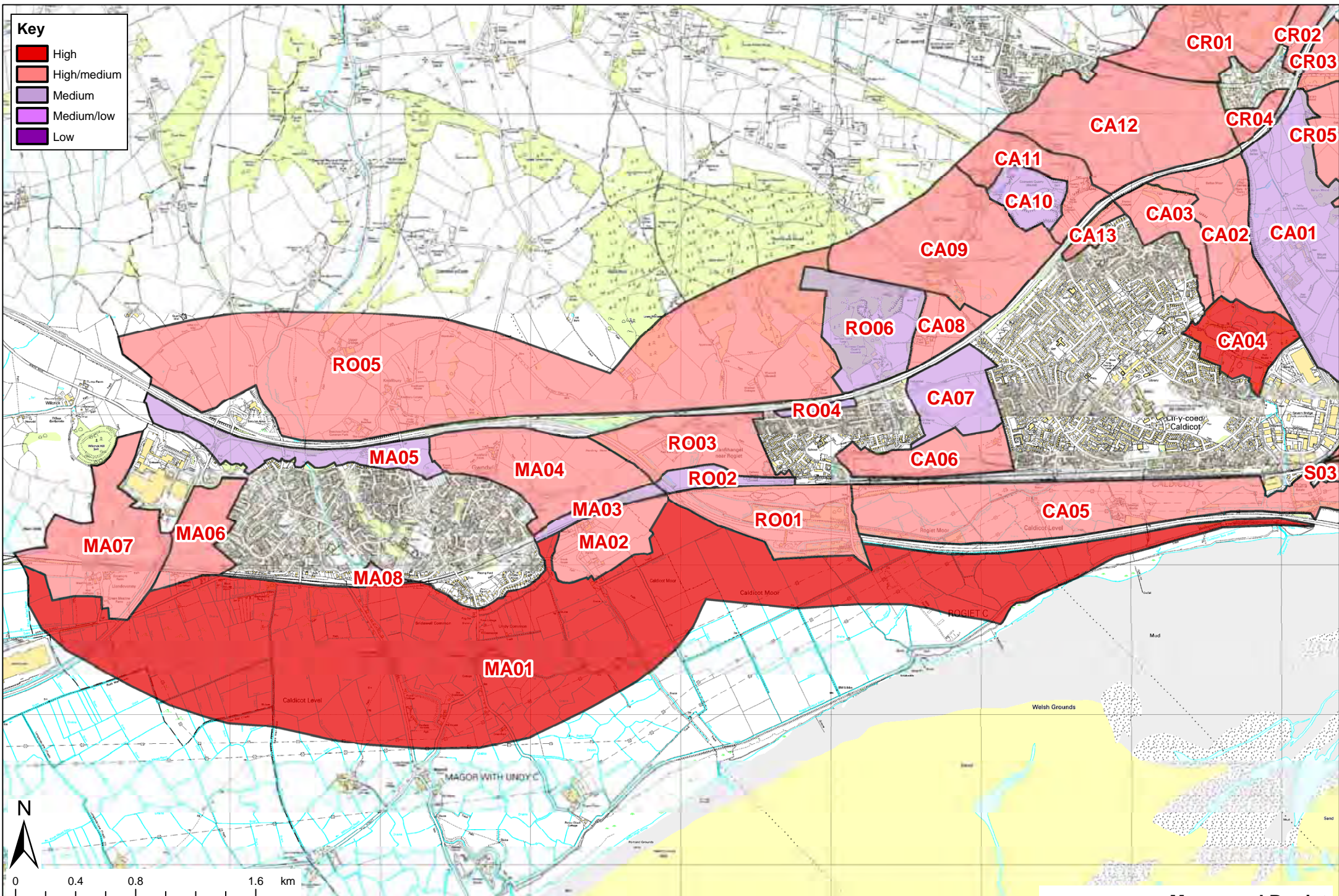


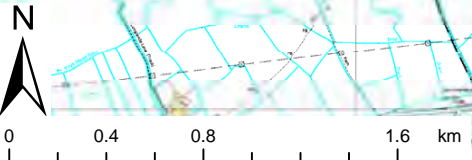
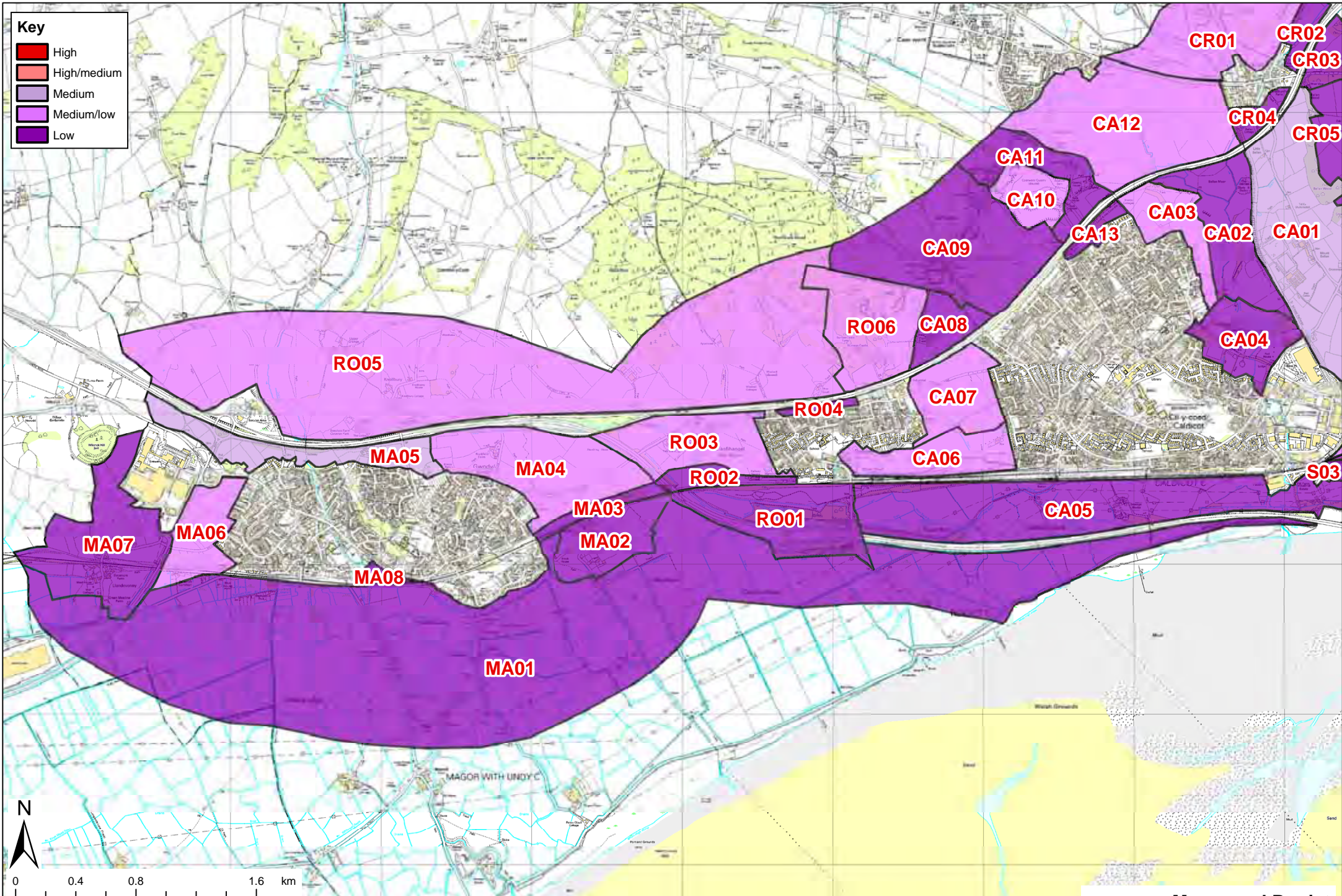
Key

- High
- High/medium
- Medium
- Medium/low
- Low



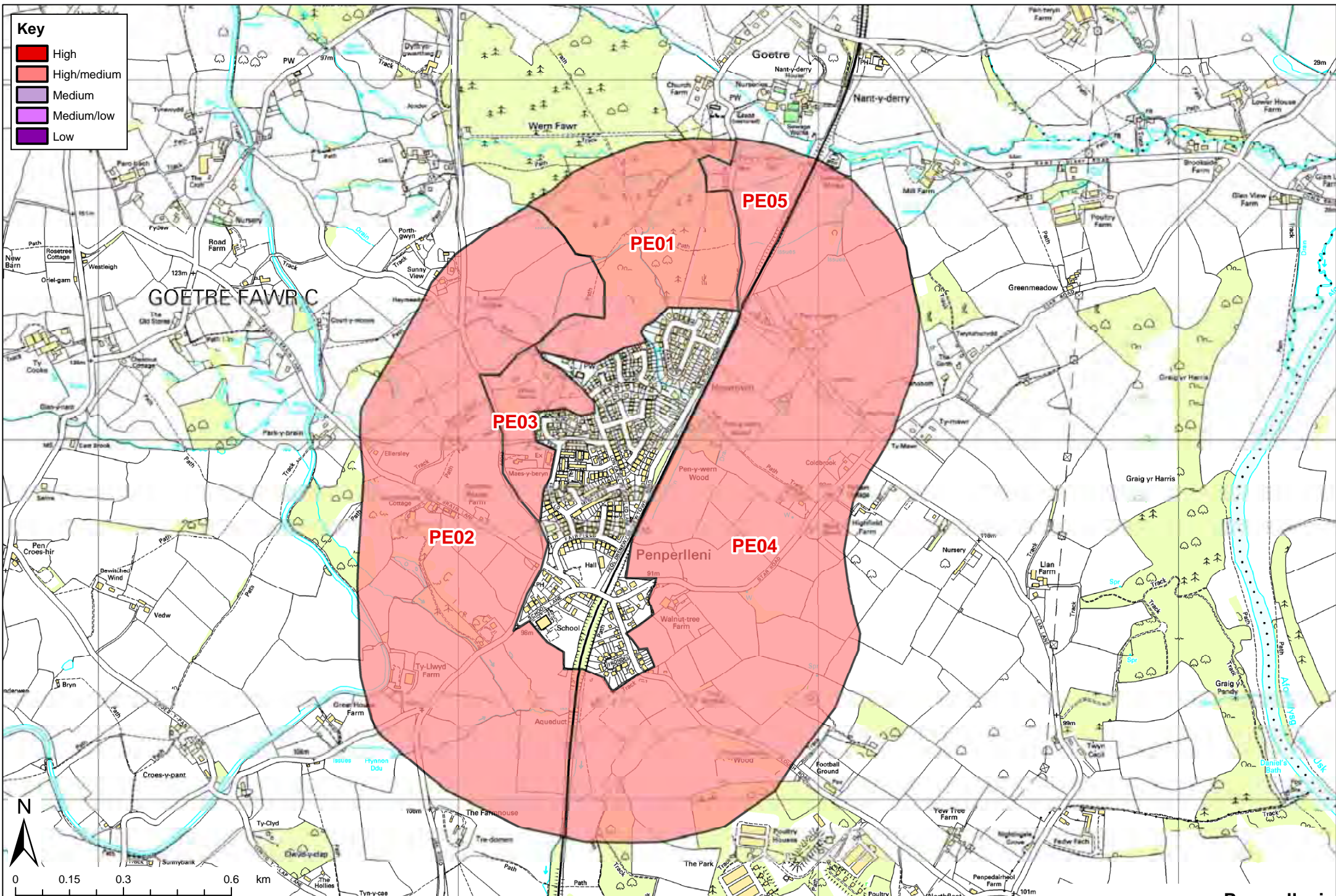
This map is reproduced from Ordnance Survey mapping with the permission of the Ordnance Survey on behalf of the Controller of Her Majesty's Stationery Office ©Crown Copyright. Unauthorised reproduction infringes Crown Copyright and may lead to prosecution or civil proceedings. (100023415) (2009).

**Magor and Rogiet
Landscape sensitivity of LLCA's**



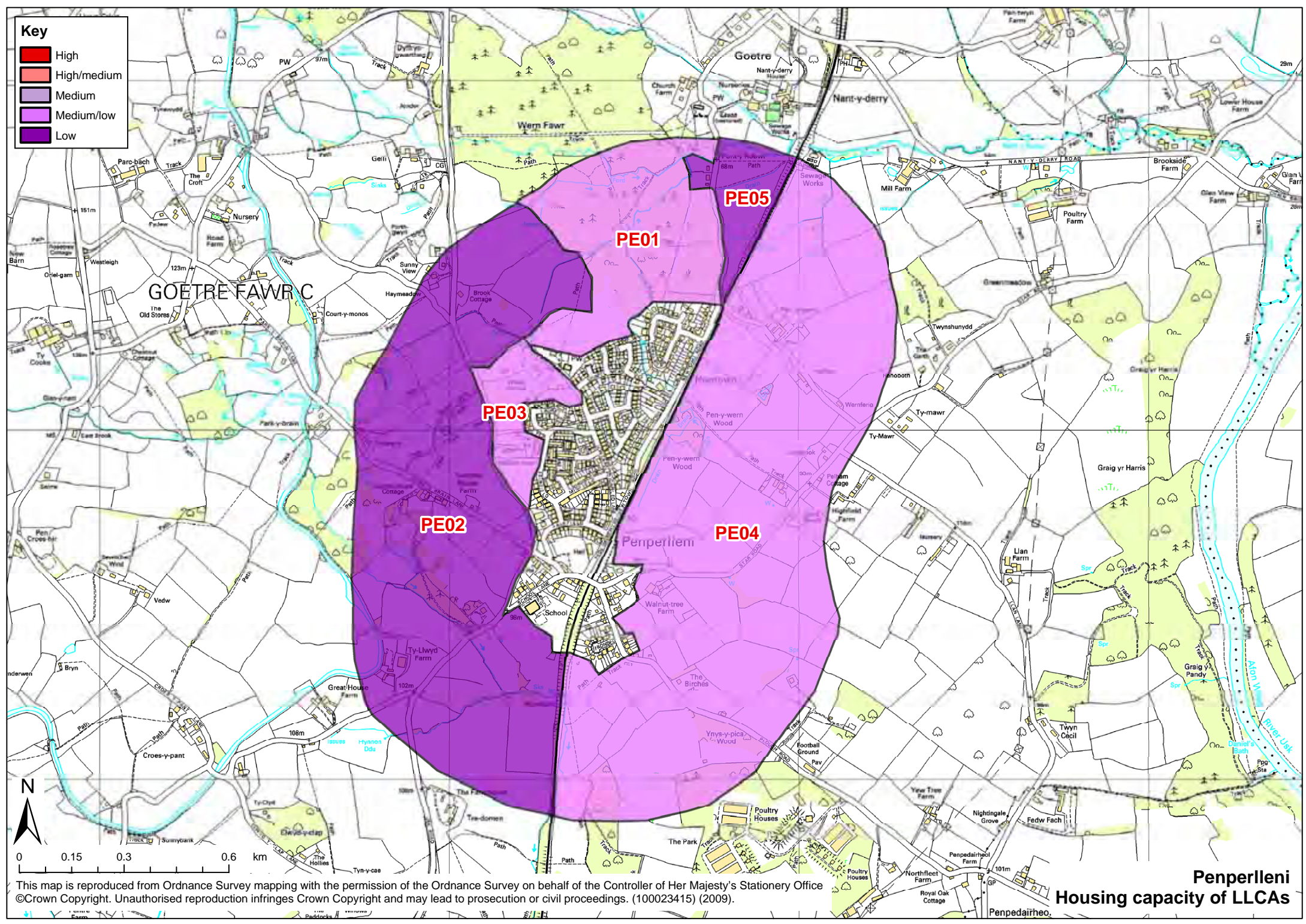
This map is reproduced from Ordnance Survey mapping with the permission of the Ordnance Survey on behalf of the Controller of Her Majesty's Stationery Office ©Crown Copyright. Unauthorised reproduction infringes Crown Copyright and may lead to prosecution or civil proceedings. (100023415) (2009).

**Magor and Rogiet
Housing capacity of LLCAs**



This map is reproduced from Ordnance Survey mapping with the permission of the Ordnance Survey on behalf of the Controller of Her Majesty's Stationery Office ©Crown Copyright. Unauthorised reproduction infringes Crown Copyright and may lead to prosecution or civil proceedings. (100023415) (2009).

**Penperlleni
Landscape sensitivity of LLCAs**

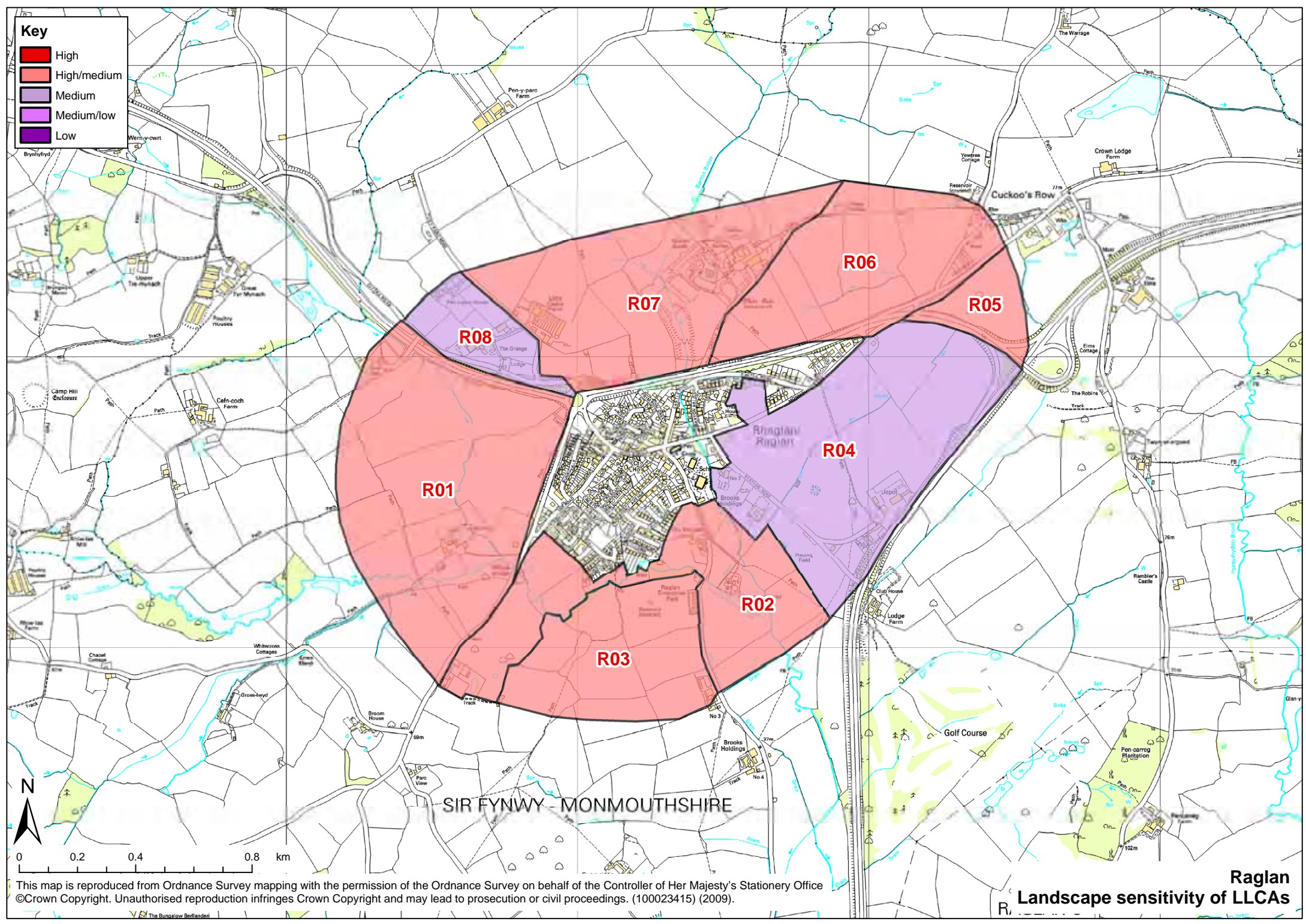


This map is reproduced from Ordnance Survey mapping with the permission of the Ordnance Survey on behalf of the Controller of Her Majesty's Stationery Office ©Crown Copyright. Unauthorised reproduction infringes Crown Copyright and may lead to prosecution or civil proceedings. (100023415) (2009).

**Penperlleni
Housing capacity of LLCAs**

Key

- High
- High/medium
- Medium
- Medium/low
- Low

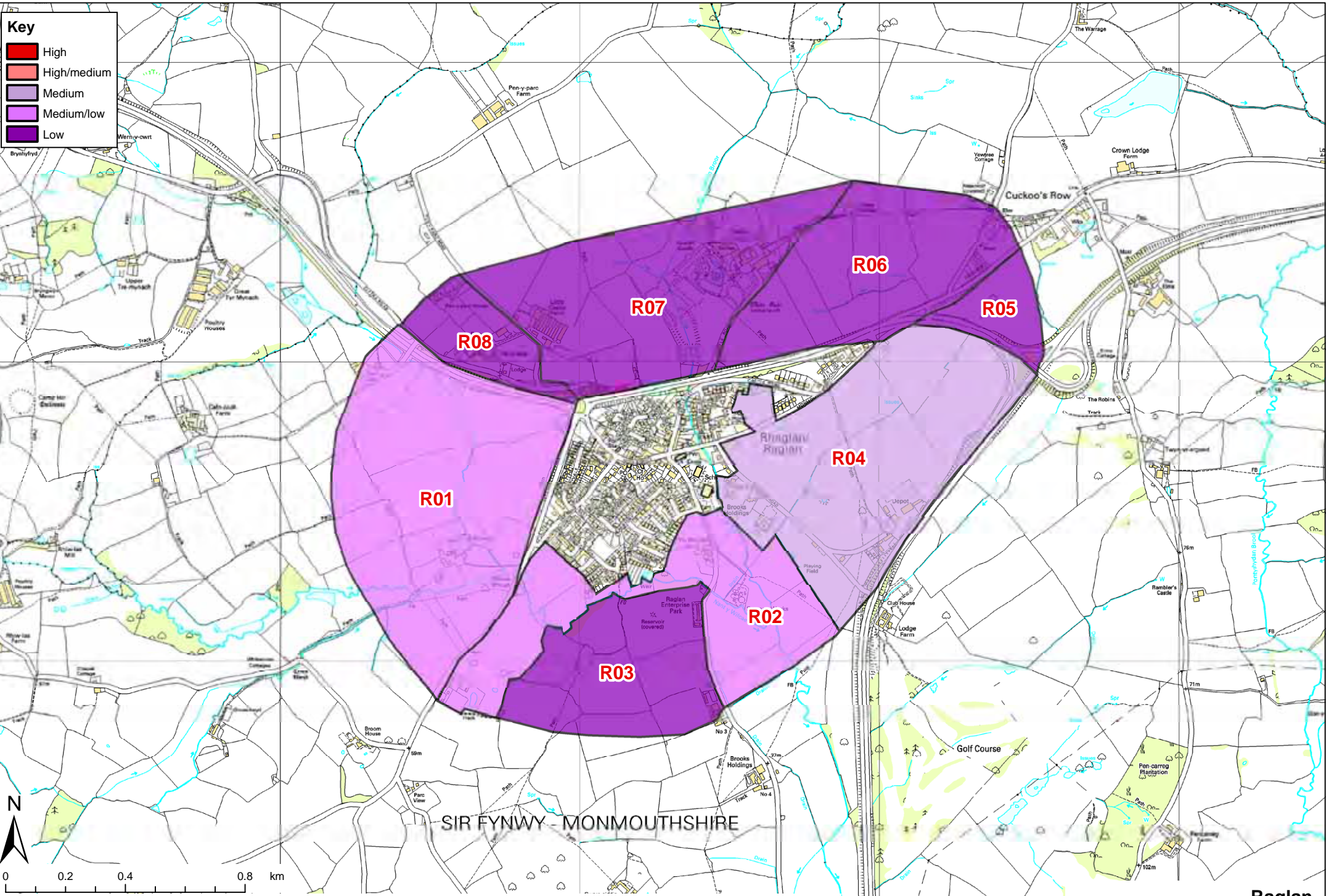


This map is reproduced from Ordnance Survey mapping with the permission of the Ordnance Survey on behalf of the Controller of Her Majesty's Stationery Office ©Crown Copyright. Unauthorised reproduction infringes Crown Copyright and may lead to prosecution or civil proceedings. (100023415) (2009).

Raglan
Landscape sensitivity of LLCAs

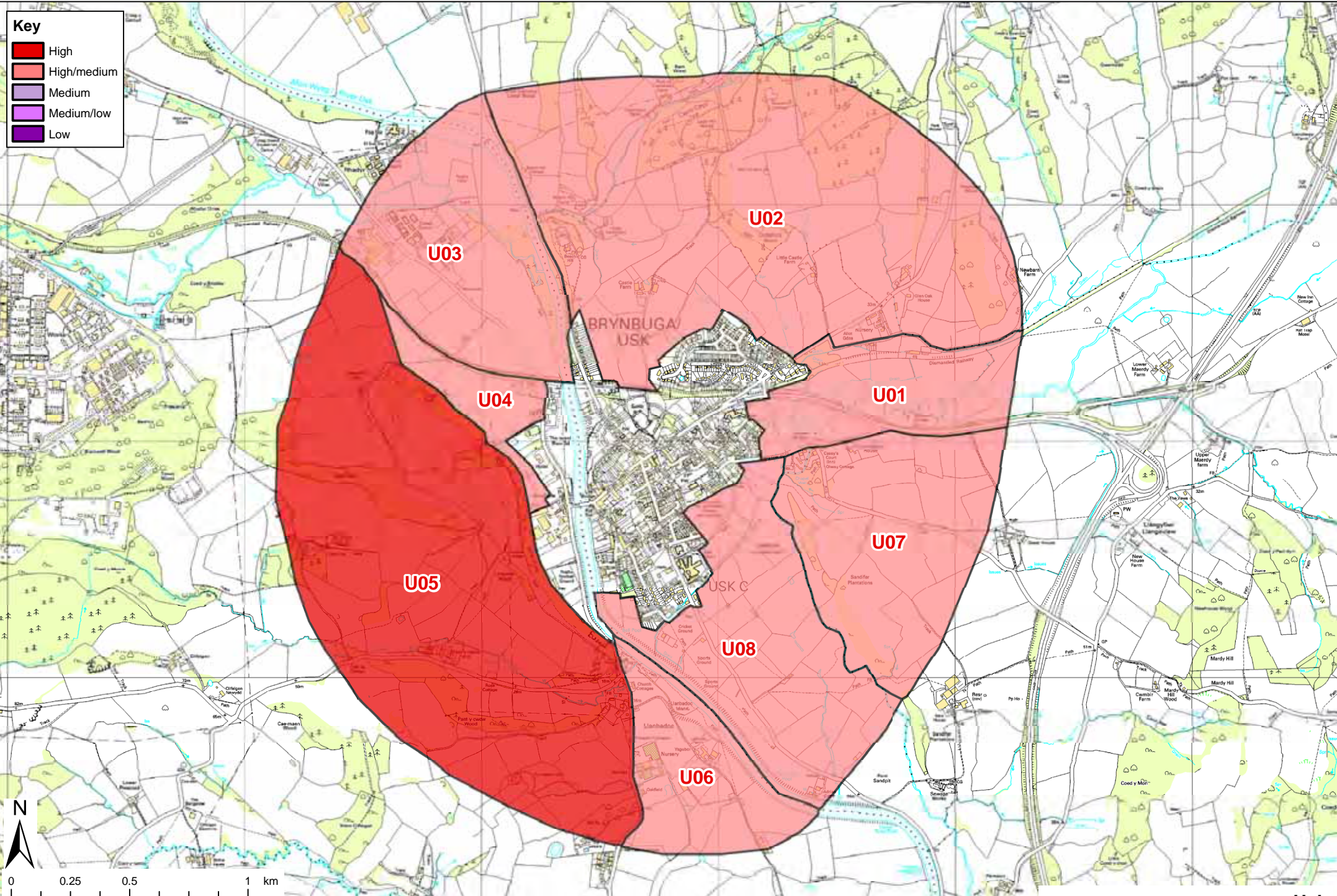
Key

- High
- High/medium
- Medium
- Medium/low
- Low



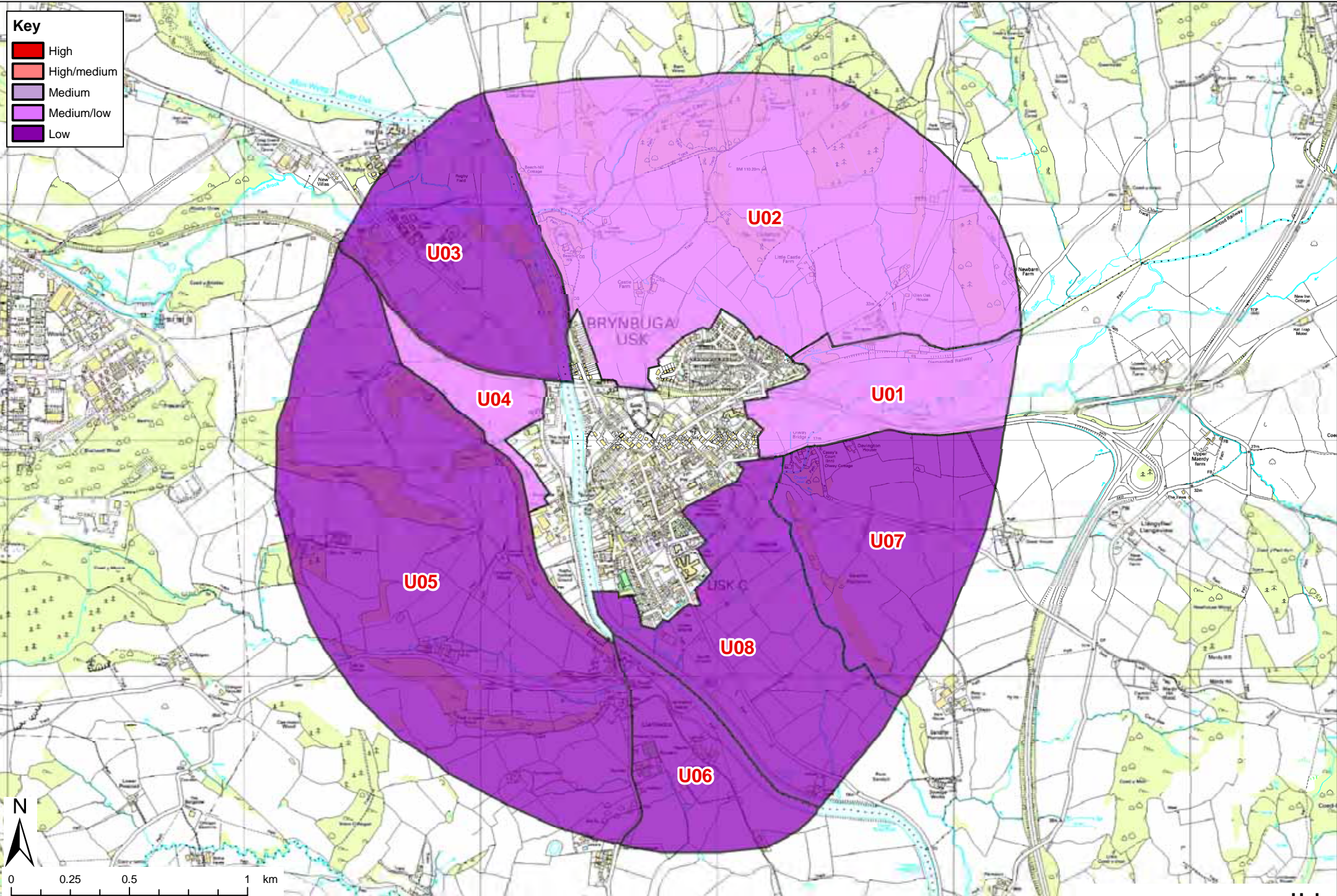
SIR FYNWY - MONMOUTHSHIRE

This map is reproduced from Ordnance Survey mapping with the permission of the Ordnance Survey on behalf of the Controller of Her Majesty's Stationery Office ©Crown Copyright. Unauthorised reproduction infringes Crown Copyright and may lead to prosecution or civil proceedings. (100023415) (2009).



This map is reproduced from Ordnance Survey mapping with the permission of the Ordnance Survey on behalf of the Controller of Her Majesty's Stationery Office ©Crown Copyright. Unauthorised reproduction infringes Crown Copyright and may lead to prosecution or civil proceedings. (100023415) (2009).

Usk
Landscape sensitivity of LLCAs



This map is reproduced from Ordnance Survey mapping with the permission of the Ordnance Survey on behalf of the Controller of Her Majesty's Stationery Office ©Crown Copyright. Unauthorised reproduction infringes Crown Copyright and may lead to prosecution or civil proceedings. (100023415) (2009).

Usk
Housing capacity of LLCAs