



---

**Review Area 1  
Goytre Village & the Surrounding  
Areas**

---

Consultation period:

18<sup>th</sup> January 2019 to 1<sup>st</sup> March 2019

## Contents

---

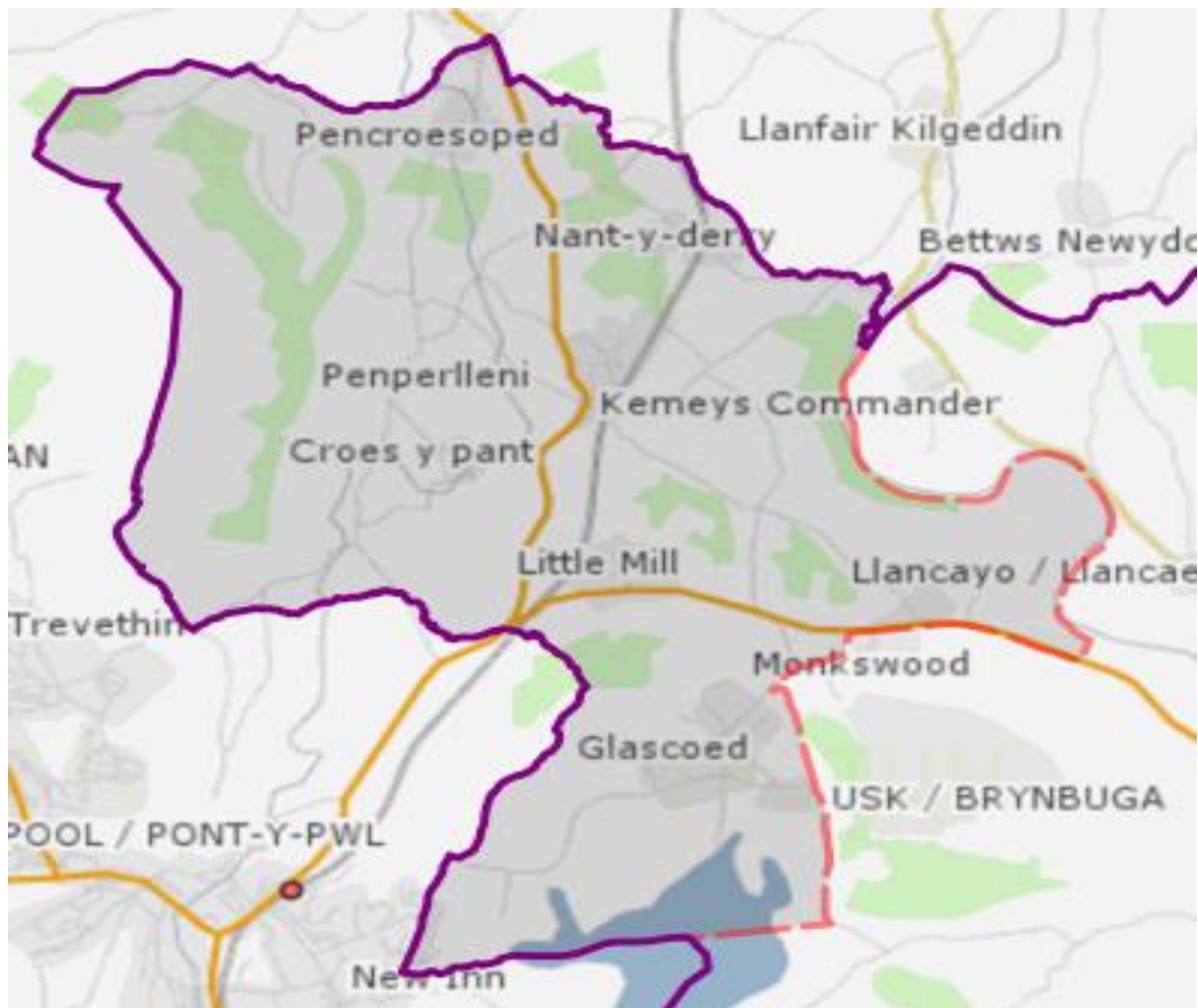
1. The Proposal.....	3
2. The current position .....	4
3. Why are we considering the proposed change? .....	6
4. Background information .....	7
5. Advantages and Disadvantages of the proposal .....	8
6. Financial Implications.....	9
7. What Next? .....	9

## 1. The Proposal

---

The Council are considering amending the secondary school catchment area for children and young people currently residing within the village of Goytre and the immediate surrounding areas. The main areas affected by this proposal are Goytre, Penperlleni, Nantyderry, Little Mill, Monkswood, Llancayo, Kemeys Commander and Glascoed.

The areas identified currently form part of the catchment area for Goytre Fawr Primary School, and Caerleon Comprehensive School. The map below illustrates the areas that are being considered under this proposal, and will help you to understand whether you could be affected by the proposed changes



The Council would like to know your views on whether the secondary school catchment boundary should be amended for the specified areas (shaded area above), to form part of the catchment area for King Henry VIII Comprehensive School, thus enabling children and young people to continue their education through a Monmouthshire education system.

Alternatively, the Council would like to know your views on whether the status quo should continue, i.e. Caerleon Comprehensive School remaining as the designated catchment school for the affected area.

The proposals would see the provision of free home to school transport offered to King Henry VIII Comprehensive School as the newly designated catchment school. Only those currently residing in the affected areas and currently on roll at Caerleon Comprehensive would continue to receive home to school transport to Caerleon Comprehensive

## 2. The current position

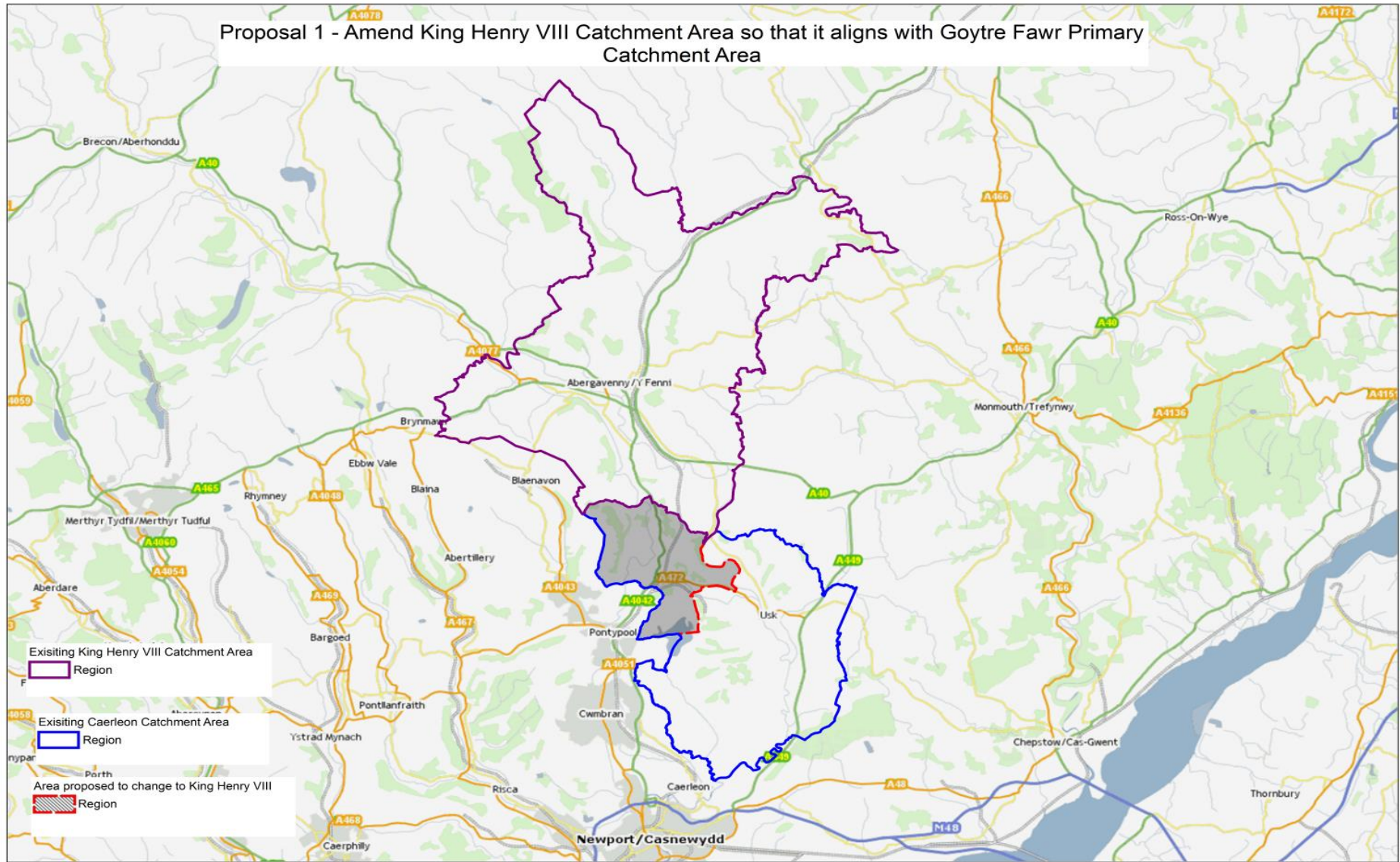
---

The area under review forms part of the catchment area for Goytre Fawr Primary School. Goytre Fawr Primary School is located in the county of Monmouthshire and is considered as a designated feeder school for King Henry VIII Comprehensive School, however, its catchment area serves more than 1 secondary school:

- 1) **Caerleon Comprehensive School**. Situated in the City of Newport and forms the secondary catchment school for the majority of children and young people that reside within the Goytre Fawr Primary catchment area.
- 2) **King Henry VIII Comprehensive School**. Situated in Abergavenny, Monmouthshire and forms the secondary catchment school for a small number of children and young people that reside within the Goytre Fawr Primary catchment area. King Henry also forms the nearest Monmouthshire Secondary school for the majority of the affected area.
- 3) **West Monmouth School**. Situated in Pontypool, Torfaen, and forms the nearest school for the majority of children and young people that reside within the catchment area for Goytre Fawr Primary School.

The map overleaf illustrates the current position, identifying how the area under review relates to existing secondary school catchment areas. For clarity, the shaded area of this map currently forms part of the catchment area for Caerleon Comprehensive School, but is proposed to form part of King Henry VIII Comprehensive School.

Proposal 1 - Amend King Henry VIII Catchment Area so that it aligns with Goytre Fawr Primary Catchment Area



### **3. Why are we considering the proposed change?**

#### **No designated secondary catchment school within Monmouthshire.**

One of the identified aims of our catchment review was to consider the areas of Monmouthshire that do not currently have a designated Secondary catchment School that falls within Monmouthshire. The secondary catchment school is presently one that falls within the city of Newport, and is not one that is considered to be the nearest school. The proposed changes to the affected areas would allow children resident in Monmouthshire to access a secondary school that is within the county in which they live.

#### **Transitional arrangements between Primary and Secondary School.**

Goytre Fawr Primary School is the designated primary school for the affected area and is a feeder school for King Henry VIII Secondary School. The proposed changes would see complete alignment between the catchment area for Goytre Fawr Primary School and King Henry VIII Secondary school, lending support to the existing transitional arrangements, and enabling the cohorts of children to remain together when entering into that daunting transition between Primary to Secondary School.

#### **Access to School places**

The parents of children and young people currently residing within the affected area have the opportunity to express a preference for a school at which they wish for their child to attend. This preference does not need to be for the designated catchment school, however, children residing within the catchment area for a preferred school receive a priority in the event of oversubscription.

Those residing within the affected area are not afforded with the above priority for a Monmouthshire School as they do not have a designated secondary catchment school within the county in which they live. The proposals would address this matter.

#### **Provision of Home to School Transport**

A further consideration of the proposed change is the current provision for home to school transport that currently serves the affected area. The council's current policy provides free home to school transport to the nearest or catchment school if residing 2 miles or more from the home address.

The affected area sees home to school transport provision offered to multiple secondary schools for some of those children and young people residing in affected area, dependent on parental preference:

- **Caerleon Comprehensive School** as the designated catchment school for most of the affected areas, although not considered to be the nearest school.
- **West Monmouth School** as the nearest school for the majority of the affected area
- **King Henry VIII School** – discretionary transport on the basis of being the nearest Monmouthshire Secondary School serving parts of the affected area.

The offer of transport to multiple secondary schools is financially unsustainable and would be addressed through these proposals.

#### 4. Background information

An analysis of parental requests made over the last 5 years show that the vast majority of children and young people attending Goytre Fawr Primary School opt to transition to either King Henry VIII or Caerleon Comprehensive Schools. The table below provides the numbers transitioning to each of the secondary schools from Goytre Fawr Primary over the last 5 years.

	Transition to King Henry VIII	Transition to Caerleon Comprehensive
September 2014	19	8
September 2015	9	9
September 2016	17	9
September 2017	18	4
September 2018	16	4
<b>Total</b>	<b>79</b>	<b>34</b>

The numbers in the above table are children and young people that have previously attended Goytre Fawr Primary School, and demonstrates that most seek admission into King Henry VIII Comprehensive School, which in the majority of cases is not the designated catchment school.

#### Projected Numbers on roll

The table below identifies the number of children that are currently residing within the affected area and therefore those most likely to be affected by the proposed change. The numbers identify the children that will transition from Primary to Secondary school between September 2020 and September 2025.

<b>Current NCY</b>	<b>Primary to Secondary transition</b>	<b>Number of Pupils Affected</b>
Year 5	Sep-20	29
Year 4	Sep-21	35
Year 3	Sep-22	18
Year 2	Sep-23	17
Year 1	Sep-24	28
Reception	Sep-25	18
	<b>Total</b>	<b>145</b>

The Council's projected numbers on roll for King Henry VIII Comprehensive school support that the above children could be accommodated should the proposals be supported and agreed.

Pupils currently on roll at Caerleon Comprehensive School.

Children and Young People who are currently on roll at Caerleon Comprehensive School will not be affected by these proposals and existing home to school transport arrangements will remain in place until they are no longer attending the school.

## 5. Advantages and Disadvantages of the proposal

<b>Advantages</b>	<b>Disadvantages</b>
The proposals are supporting Monmouthshire children attending Monmouthshire Schools	Families residing within the affected area would be removed from the catchment area for Caerleon Comprehensive should proposals be agreed.
Families residing within the affected area would have a designated catchment school within the county in which they live	Children and Young People from within the affected area can apply for a school place at Caerleon Comprehensive should they wish. However, there is an increased risk that their application will be unsuccessful as they would then be considered to be an out of catchment applicant.
School catchment areas form part of the oversubscription criteria used to award school places. Children and young people from the affected area would gain an advantage in obtaining a school place at a Monmouthshire school	Only children residing within the affected area that are already on roll at Caerleon Comprehensive School will continue to receive free home to school transport. Any new requests will not be entitled from September 2020.

should they form part of the catchment area.	
Children and young people residing within the affected area would meet the criteria to receive free home to school transport to a Monmouthshire School.	Some parts of the affected area are slightly closer in distance to Caerleon Comprehensive than King Henry Comprehensive. Therefore, travel distances for some may increase.
The number of schools to which the council currently provides free home to school transport would reduce	
Enabling the above would support the robust transition links between Goytre Fawr Primary and King Henry VIII, enabling peer groups to remain together on transition to secondary school.	

## 6. Financial Implications

---

The aims of this proposal are not are not financially driven, but to enable Monmouthshire children and young people to continue their education at a Monmouthshire Secondary School. However, a full cost analysis looking at the financial impacts of the proposal will be undertaken alongside this consultation, paying particular attention to the impact on the Monmouthshire schools affected by the proposal, as well as the impact on home to school transport costs.

A full cost analysis will be presented to the Council's Cabinet alongside the views received as part of this consultation, to determine whether the proposal should be implemented.

## 7. What Next?

---

Your views on the proposed changes to secondary school catchment areas are important to us. We really do want you to engage in this consultation and tell us what you think of the proposals, particularly if they may affect you or your children.

**Important:** This consultation will not make any assumptions, so whether you are for or against the proposed changes, please take this opportunity to have your say

You can tell us what you think by:

- 1) Attending one of the drop in sessions:

Review Area	Date	Venue
Goytre and surrounding areas	5 <sup>th</sup> February 2019 at 6pm	Goytre Fawr Primary School

All areas day time drop in session	14 <sup>th</sup> February 2019 9.30am to 11.30am	County Hall, Usk
------------------------------------	---	------------------

- 2) To enable us to carry out detailed analysis of the feedback provided we would urge you to complete the consultation questionnaire, which is available on our website at [www.monmouthshire.gov.uk/catchmentconsultation](http://www.monmouthshire.gov.uk/catchmentconsultation)

If you have any questions on the proposals please contact the Access Unit on 01633 644508 or by emailing [acesstolearning@monmouthshire.gov.uk](mailto:acesstolearning@monmouthshire.gov.uk).

Please note that the deadline for responses to this consultation is 1<sup>st</sup> March 2019 at 5pm. Any responses received by the local authority after this closing date will not be considered as part of this consultation.